



Informatica Power Center 9.0.1

Building Financial Data Mode - Lab#1

Hands-on Guide Loading Data from Flat Files

Description:

BISP is committed to provide BEST learning material to the beginners and advance learners. In the same series, we have prepared a complete end-to-end Hands-on Guide for building financial data model in Informatica. This is one of our documents from Informatica learning series.

History:

Version	Description Change	Author	Publish Date
0.1	Initial Draft	Upendra Upadhyay	1st July 2011
0.1	Review#1	Amit Sharma	10th July 2011

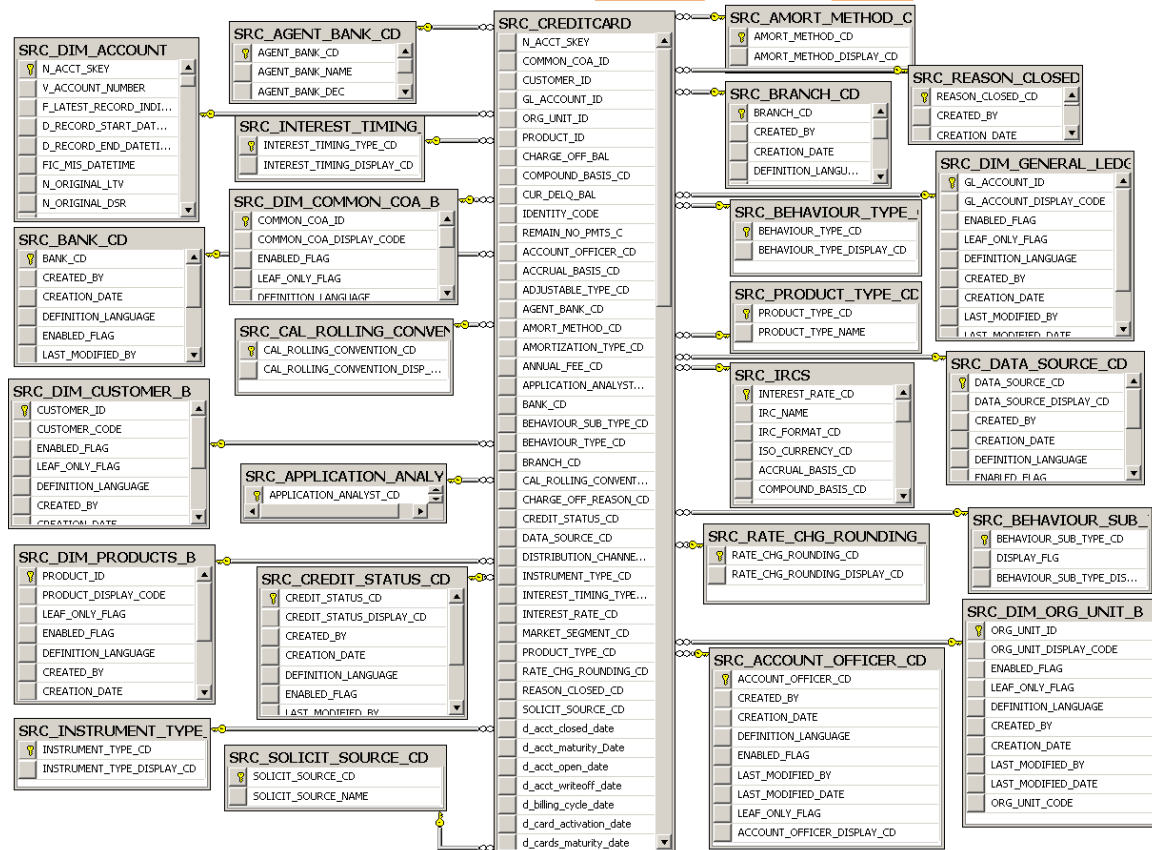
TABLE OF CONTENTS

S.NO	TITLE	PAGE. NO.
1	<u>Introduction.</u>	3
2	<u>Creating Repository & Folder.</u>	4-7
3	<u>Import database.</u>	8-18
4	<u>Create Mapping.</u>	19-22
5	<u>Create Workflow.</u>	23-28
6	<u>Workflow Monitor & Review data.</u>	29-30

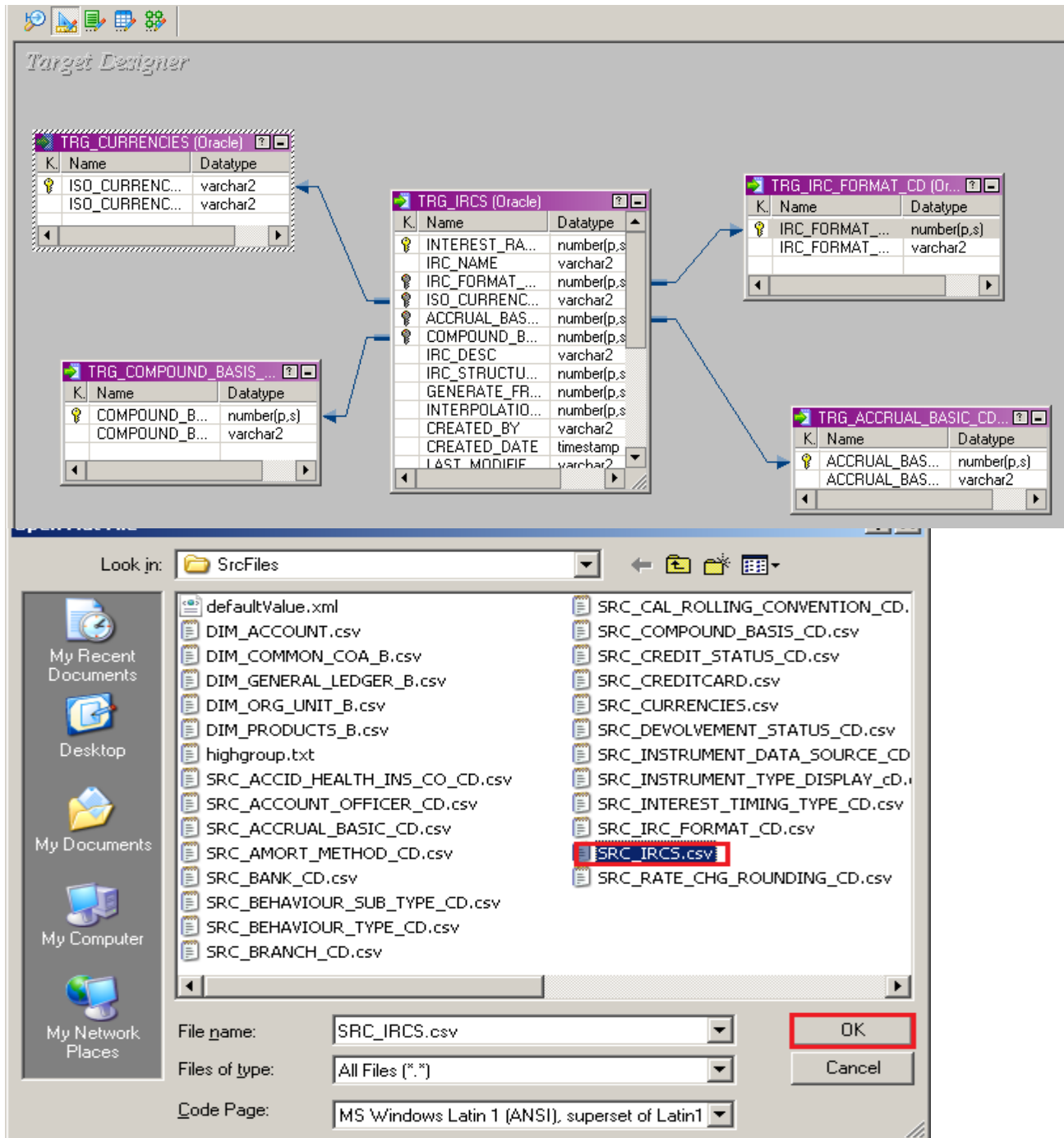
Introduction

Flat file Transformation in Informatica A flat file is a collection of information stored and accessed sequentially in a database, often created to store information in a non-structured way. Comma Separated Value (CSV) sheets, for example, present information with each field separated from the next by a comma. While a flat file system offers some advantages, it often makes large amounts of data quite cumbersome to store and access. The majority of databases used today are relational systems that use structured queries to retrieve information and present it to the user.

Complete Financial Model :



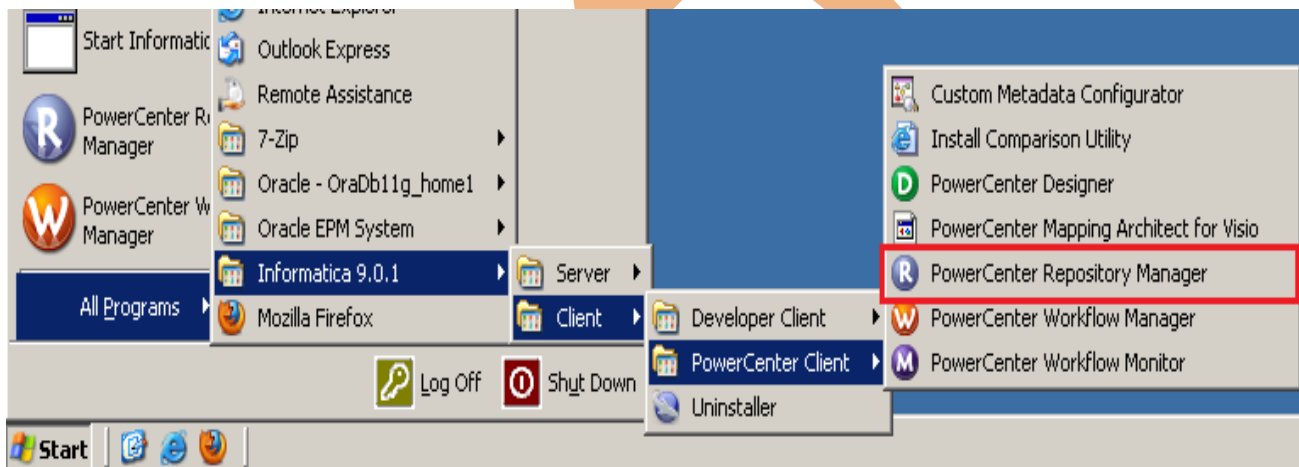
Target Table.



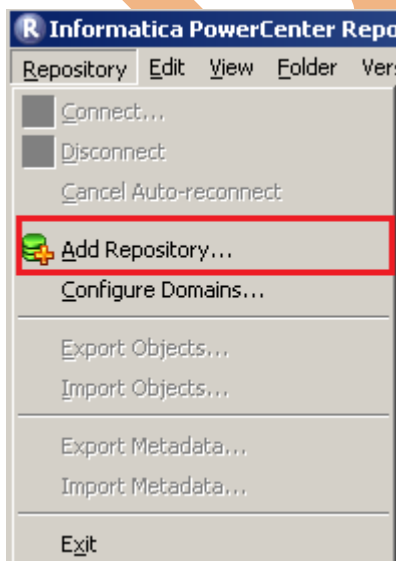
Creating Repository and Folder

Creating Repository & Connecting it.

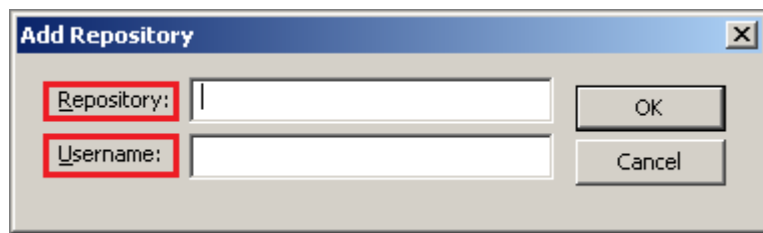
Step-1 First create repository, Click on Start -> All Programs -> Informatica 9.0.1 -> Client -> Power Center Client -> Power Center Repository Manager.



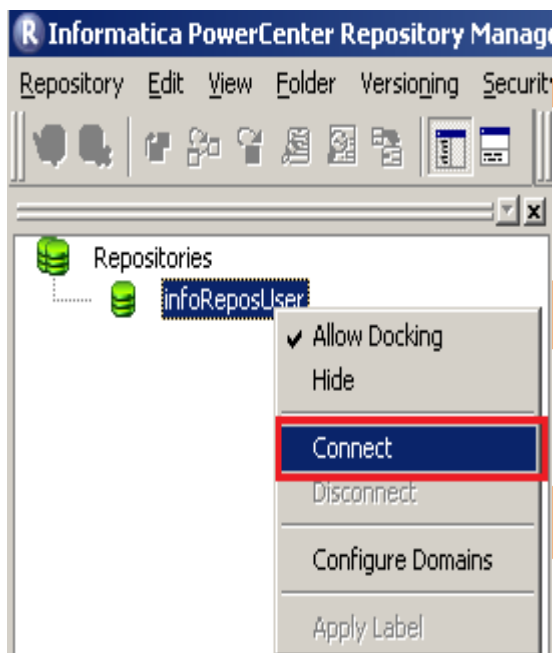
Step-2 Then click on Repository Menu and click on Add Repository.



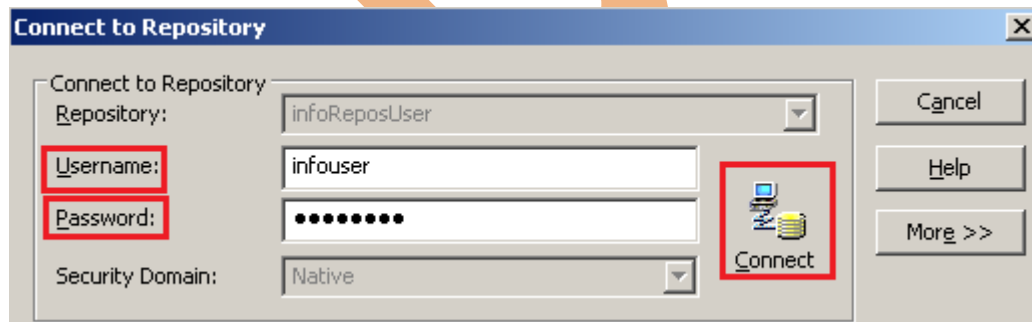
Step-3 Give information like Repository Name and Username. Then click on ok button and repository created successfully.



Step-4 Now connect repository. Right click on newly created repository and click on connect.



Step-5 Give Username & password and click on Connect.

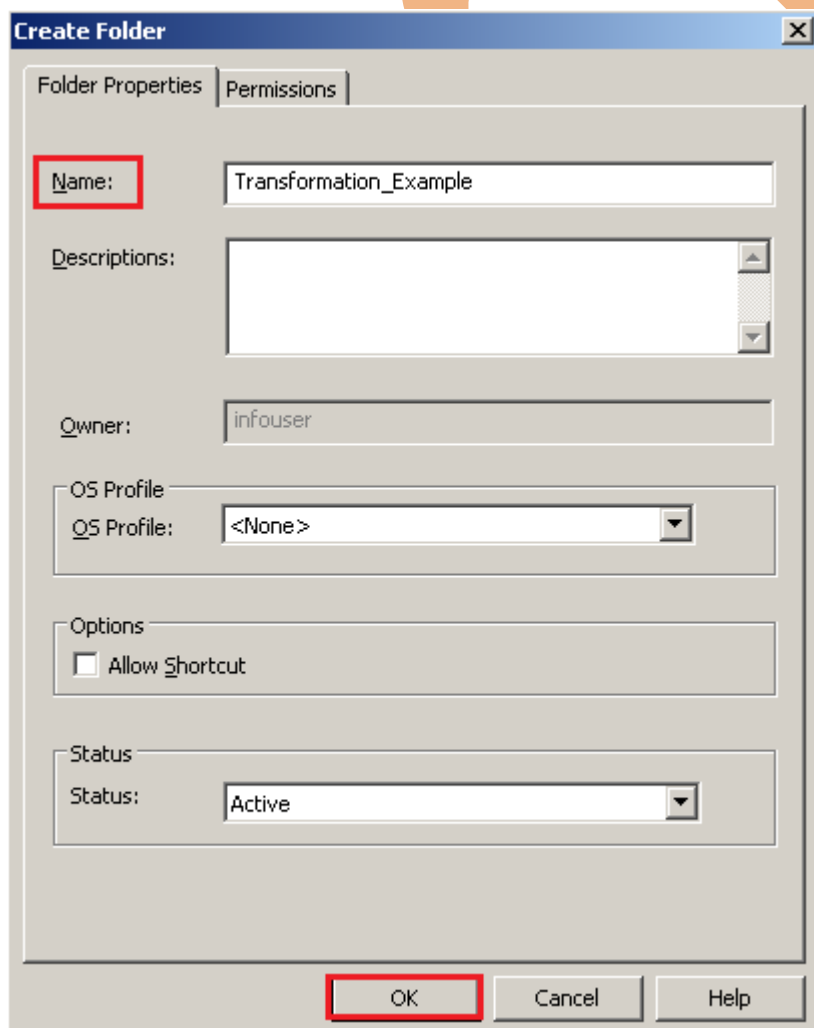


Creating Folder.

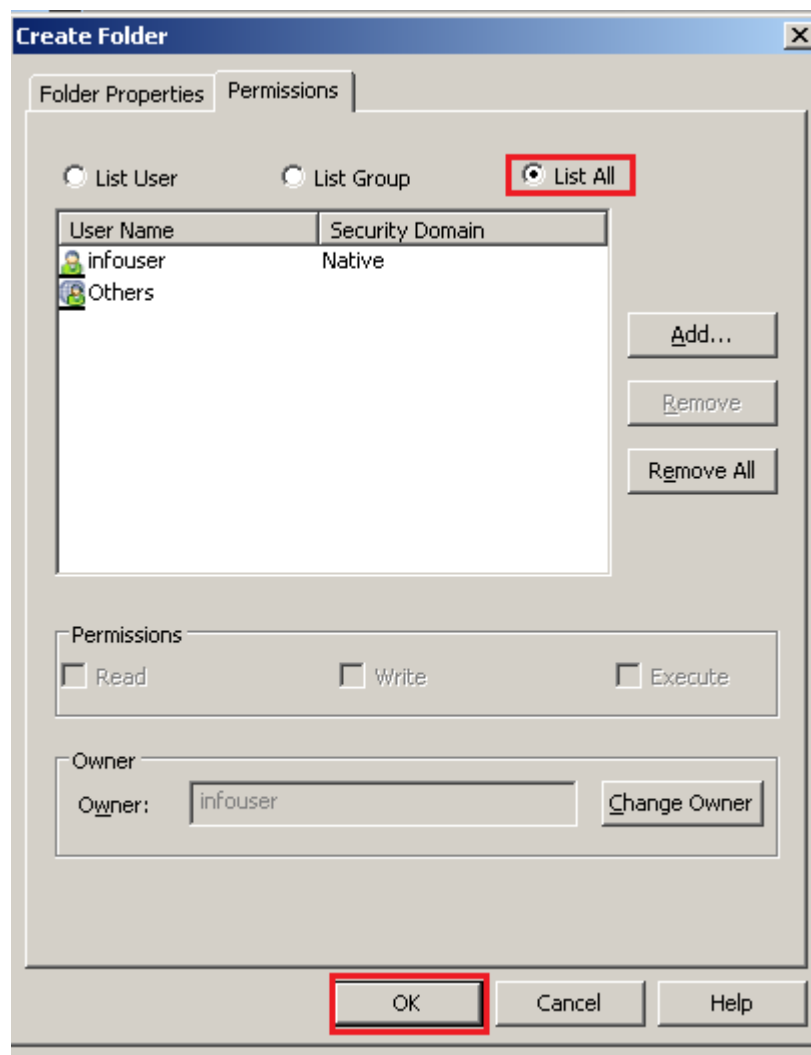
Step-1 Go to Informatica Power Center Repository Manager and click on Folder Menu and click on Create.



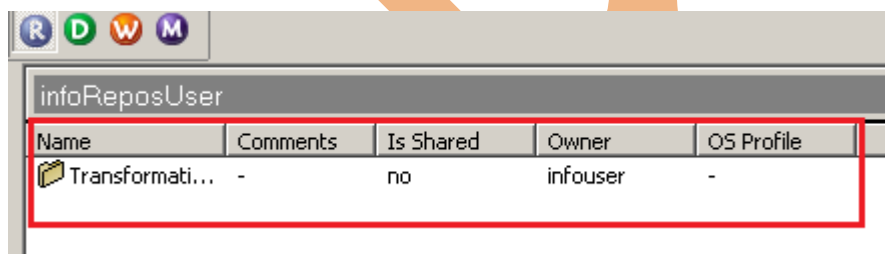
Step-2 Specify Name of Folder, Description, Owner, OS Profile, Options, Status and got to permissions tab.



Step-3 This is permission tab to give permission for this folder.

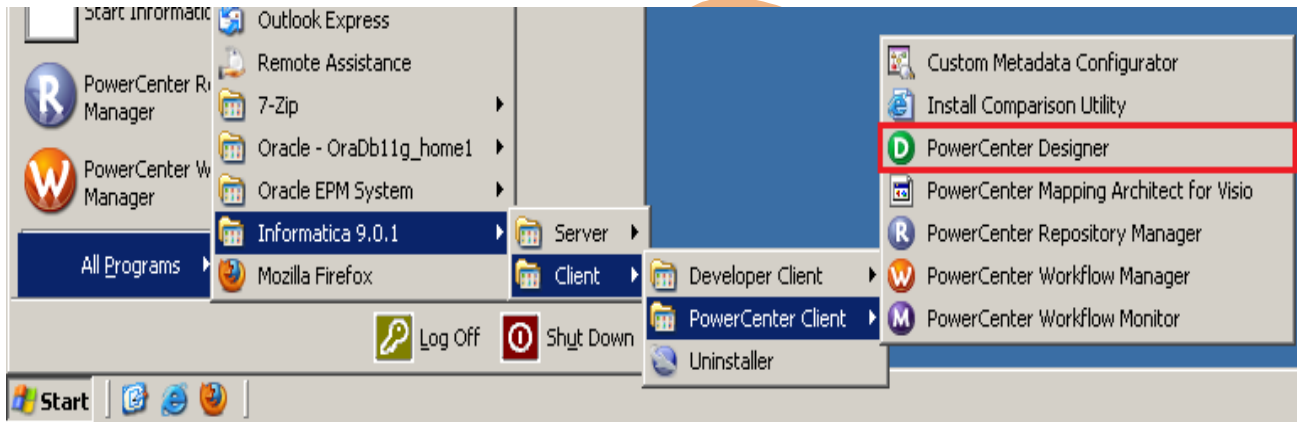


Step-4 This is newly created Folder

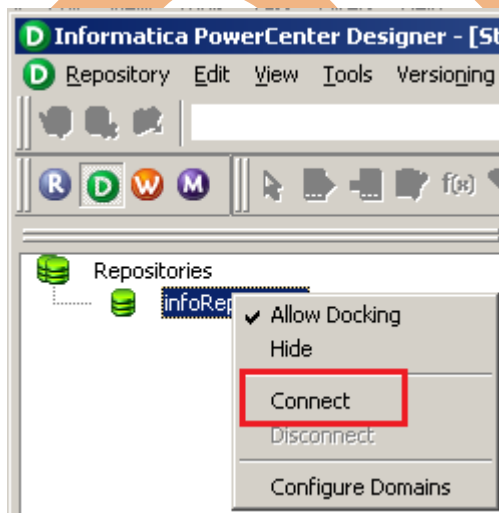


Importing Source files

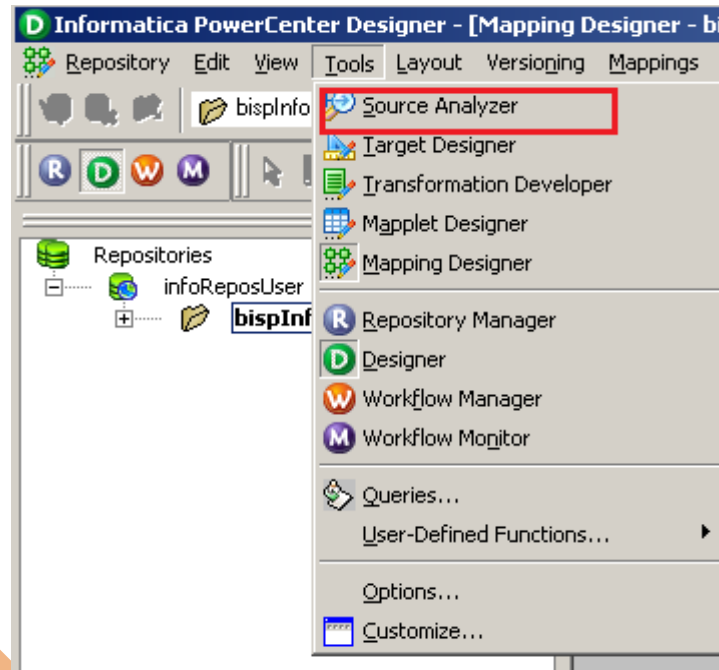
Step-1 Click on Start -> All Programs -> Informatica 9.0.1 -> Client -> Power Center Client -> Power Center Designer..



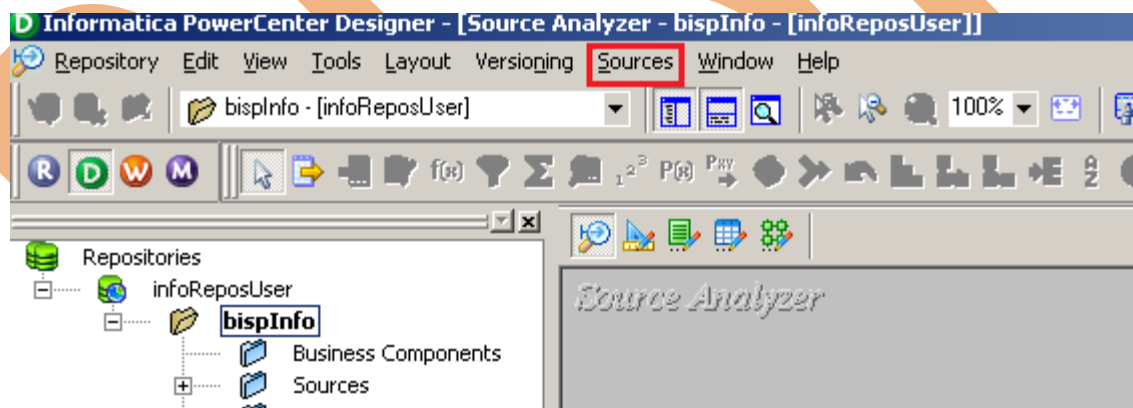
Step-2 Then Connect to Repository in Informatica Power Center Designer Right click on repository name and click on Connect.



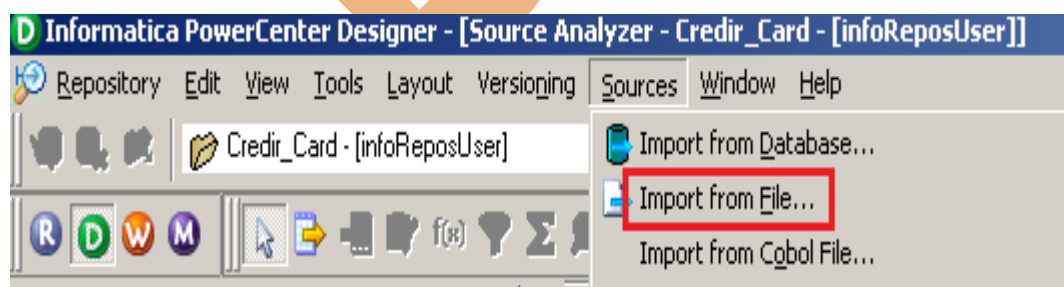
Step-3 Go to Tools Menu and click on Source Analyzer to import source table.



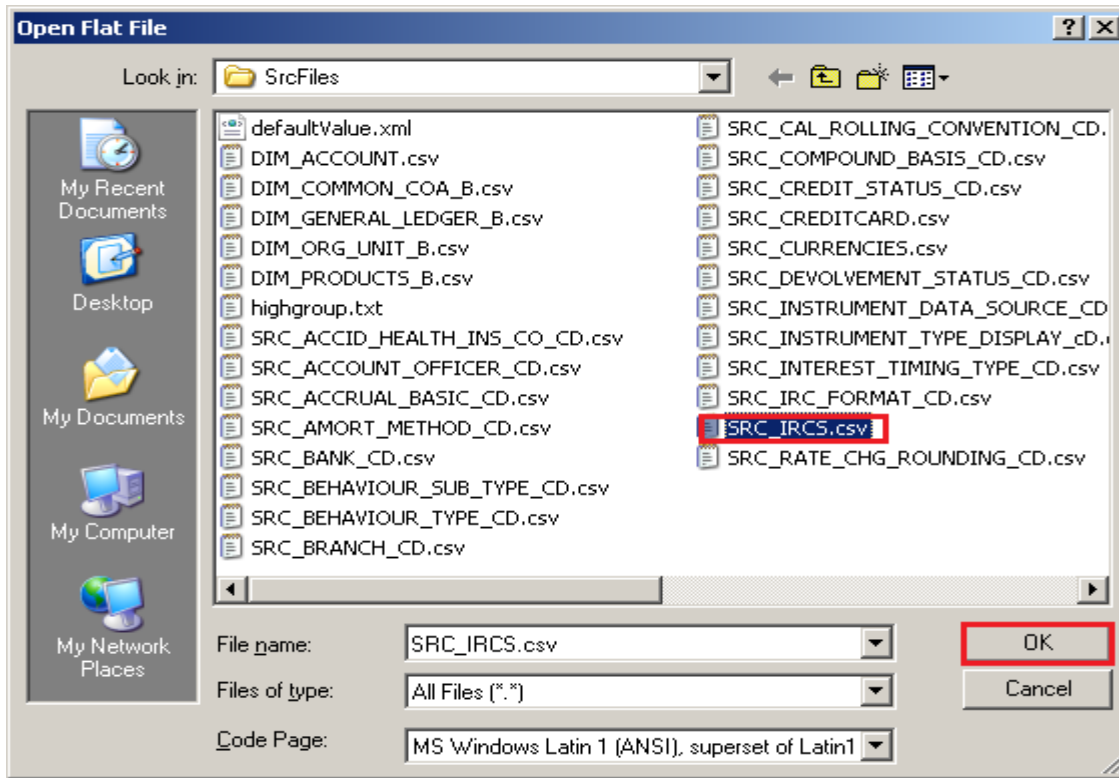
Step-4 And then go to Sources Menu in Informatica Power Center Designer.



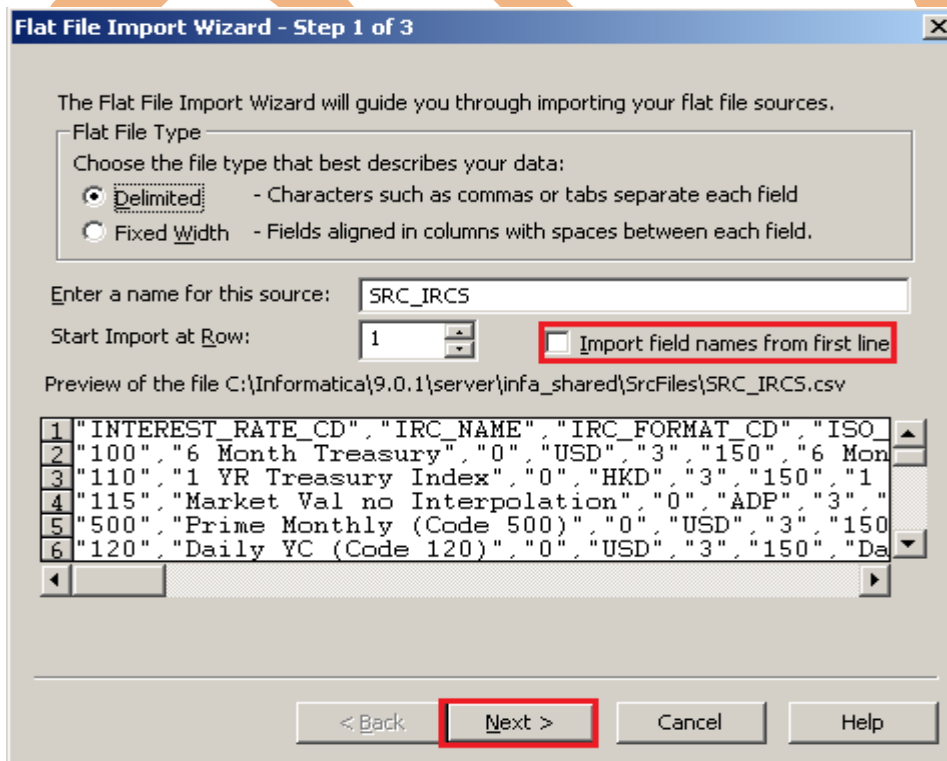
Step-5 And then click on Source menu and select Import from file.



Step-6 Select Flat file which you want to import, Select location in Look in and select file and click OK.



Step-7 Choose the file type - Delimited, click on Import field names from first line. and then click Next.



Step-8 Specify Delimiters and click Next Button.

Flat File Import Wizard - Step 2 of 3

Next, indicate the delimiters used in the flat file.

☐ Use default text length: 256

Delimiters

☐ Tab ☐ Semicolon ☒ Comma

☐ Space ☐ Other:

☐ Treat consecutive delimiters as one

☐ Treat multiple delimiters as AND

Escape character: ☐ ☒ Remove escape character from data

Text Qualifier

☐ No quotes

☐ Single quotes

☒ Double quotes

	FI	FIELD2		FI	FI	FIELD7
1	1006	Month Treasury	0USD31506	Month Treas		
2	1101	YR Treasury Index	0HKD31501	YR Treasury		
3	115	Market Val no Interpolation	0ADP3150	Market Val no		
4	500	Prime Monthly (Code 500)	0USD3150	Prime Monthly		
5	120	Daily YC (Code 120)	0USD3150	Daily YC (Cod		
6	510	Prime Daily (Code 510)	0HKD3150	Prime Daily (

< Back **Next >** Cancel Help

Step-9 Specify Name of Column and Click Finish.

Flat File Import Wizard - Step 3 of 3

Next, select the name and datatype for each column.

☐ Column Information

Name: INTEREST_RATE_CD

Datatype:

☐ Text Length/Prec. 3

☒ Numeric Scale 0

☐ Datetime Width 3

Source definition:

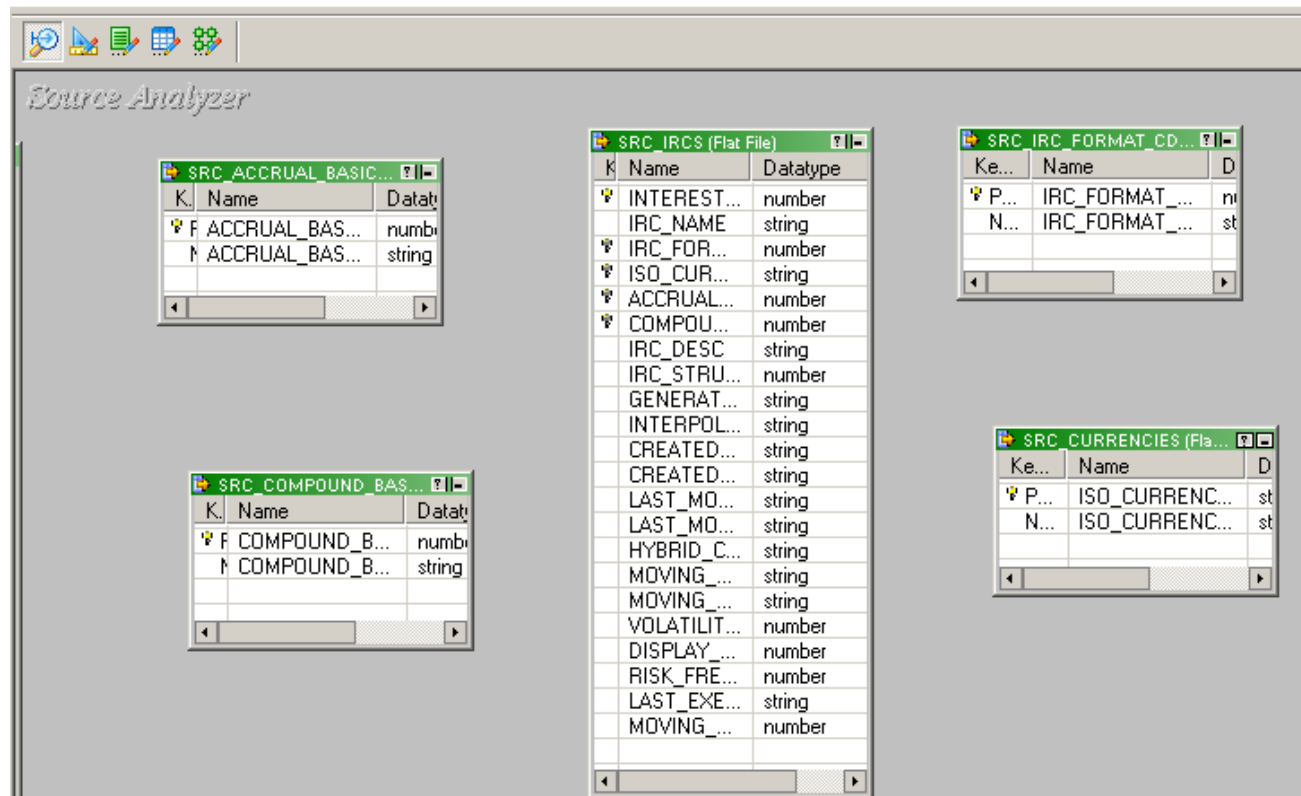
Name	Type	Le...	Scale
INTEREST...	Num...	3	0
IRC_NAME	Text	38	-
IRC_FOR...	Num...	1	0
ISO_CURR...	Text	3	-
ACCRUAL...	Num...	1	0
COMPOUN...	Num...	3	0
IRC_DESC	Text	38	-

	IN	IRC NAME		IS	CO	IRC DESC
1	1006	Month Treasury	0USD31506	Month Treas		
2	1101	YR Treasury Index	0HKD31501	YR Treasury		
3	115	Market Val no Interpolation	0ADP3150	Market Val no		
4	500	Prime Monthly (Code 500)	0USD3150	Prime Monthly		
5	120	Daily YC (Code 120)	0USD3150	Daily YC (Cod		
6	510	Prime Daily (Code 510)	0HKD3150	Prime Daily (

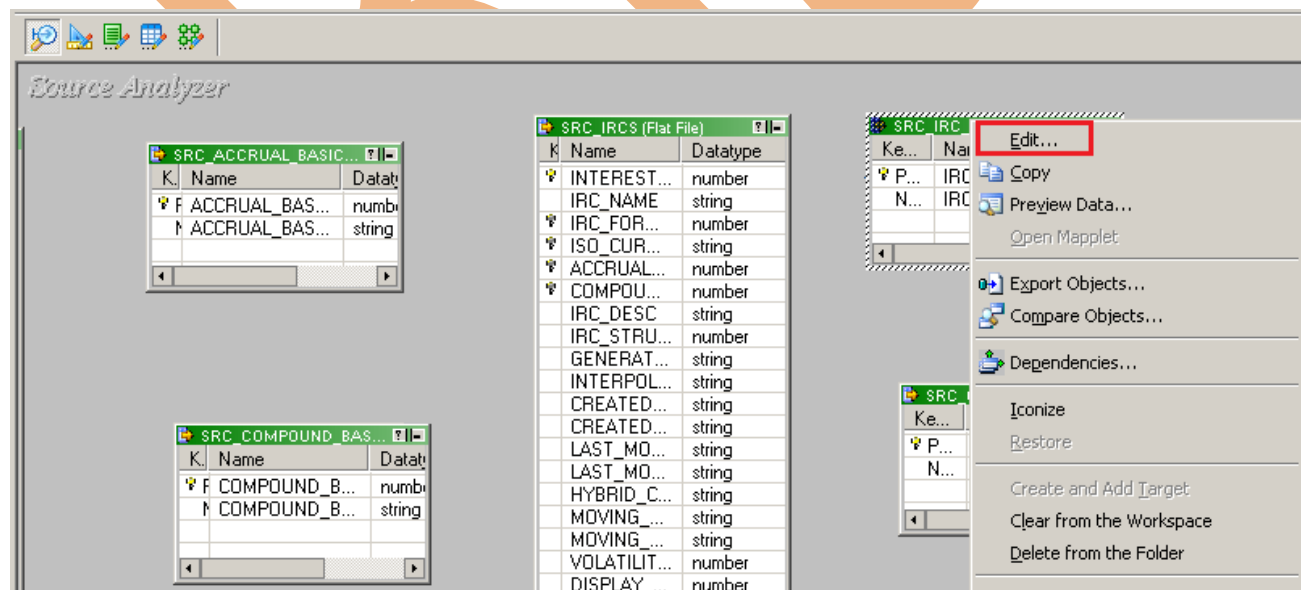
< Back **Finish** Cancel Help

Step-10 Then apply (Step-4 to Step -9) to import all Flatfile.

Step-11 This is Source table.



Step-12 Now Create Primary Key, Right click on Table and select Edit.



Step-13 Go to Columns tab to Create Primary Key.

Edit Tables

Table **Columns** Properties Metadata Extensions

Select table: FlatFile:SRC_IRC_FORMAT_CD Rename

Business name:

Owner name:

Description:

Database type: Flat File

Flat file information:
☒ Delimited Advanced...
☐ Fixed width

OK Cancel Apply Help

Step-14 Click on Key Type and select Primary Key and OK.

Edit Tables

Table Columns Properties Metadata Extensions

Select table: FlatFile:SRC_IRC_FORMAT_CD

	Column Name	Datatype	Prec	Scale	Not Null	Format	Key Type
1	IRC_FORMAT_CD	number	1	0	<input checked="" type="checkbox"/>		PRIMARY KEY
2	IRC_FORMAT_NAME	string	1	0	<input type="checkbox"/>		NOT A KEY

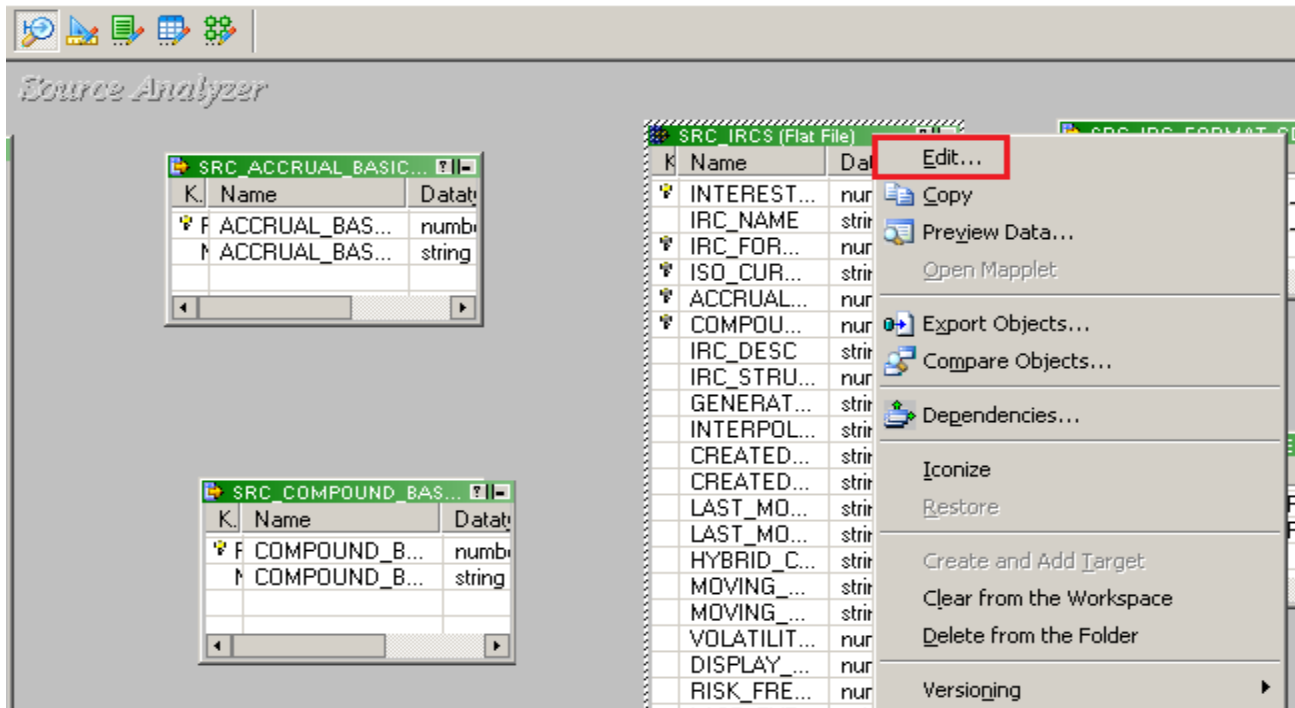
Primary table:

Primary column:

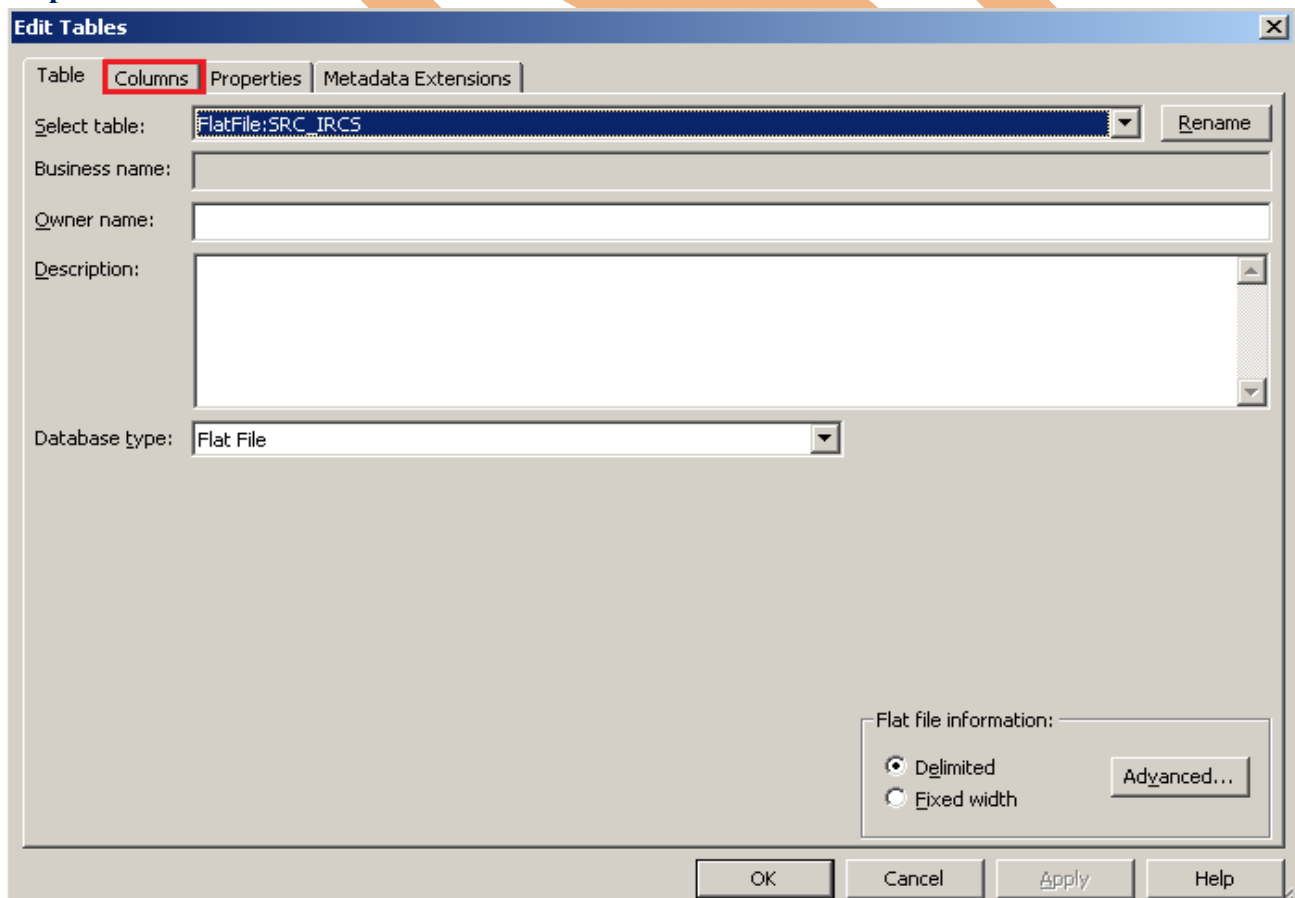
Description:

OK Cancel Apply Help

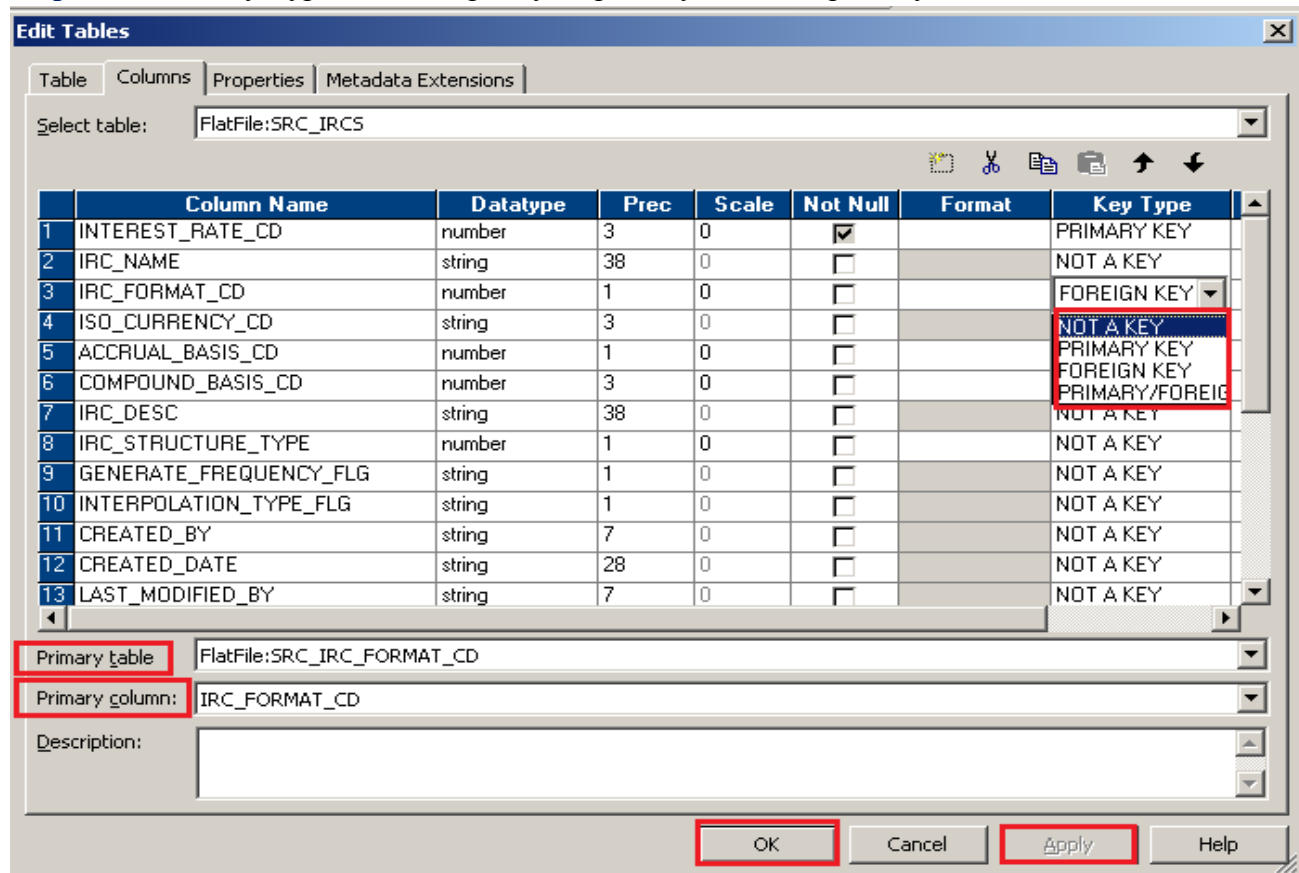
Step-15 Then create relationship of all table so make foreign key.



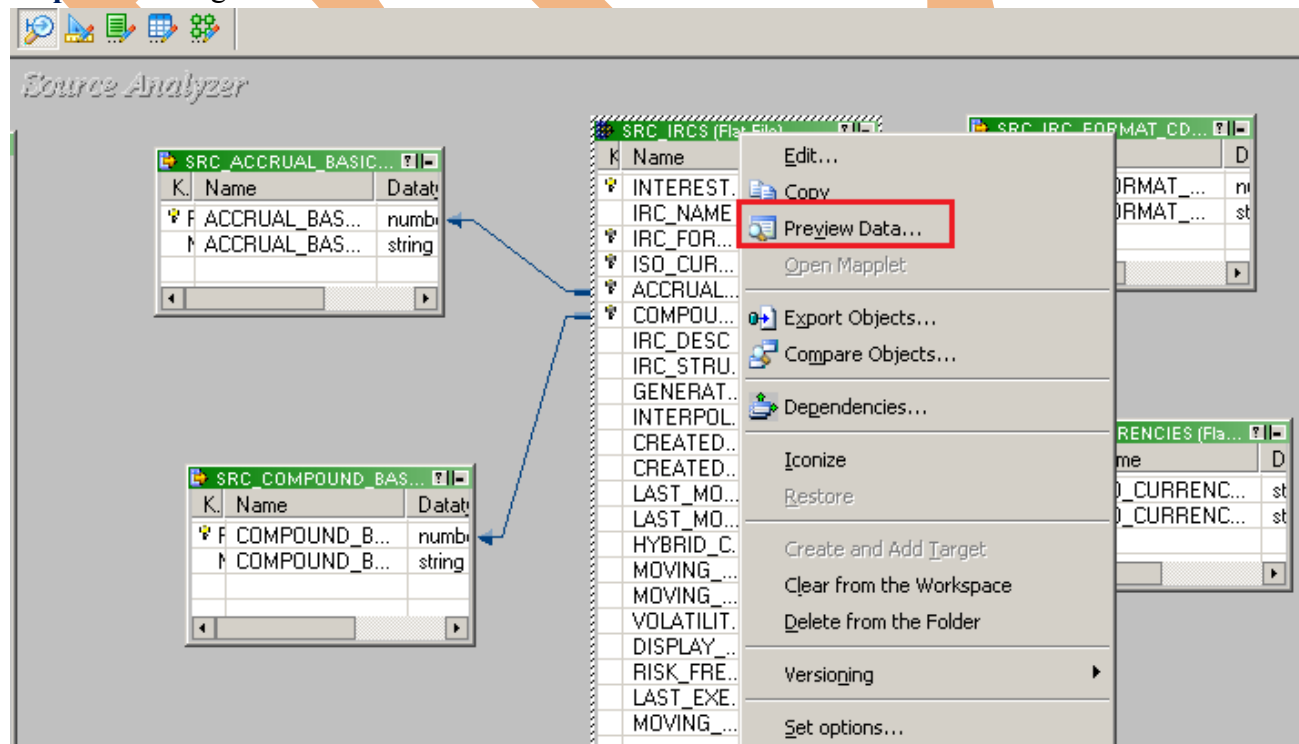
Step-16 Go to Columns tab.



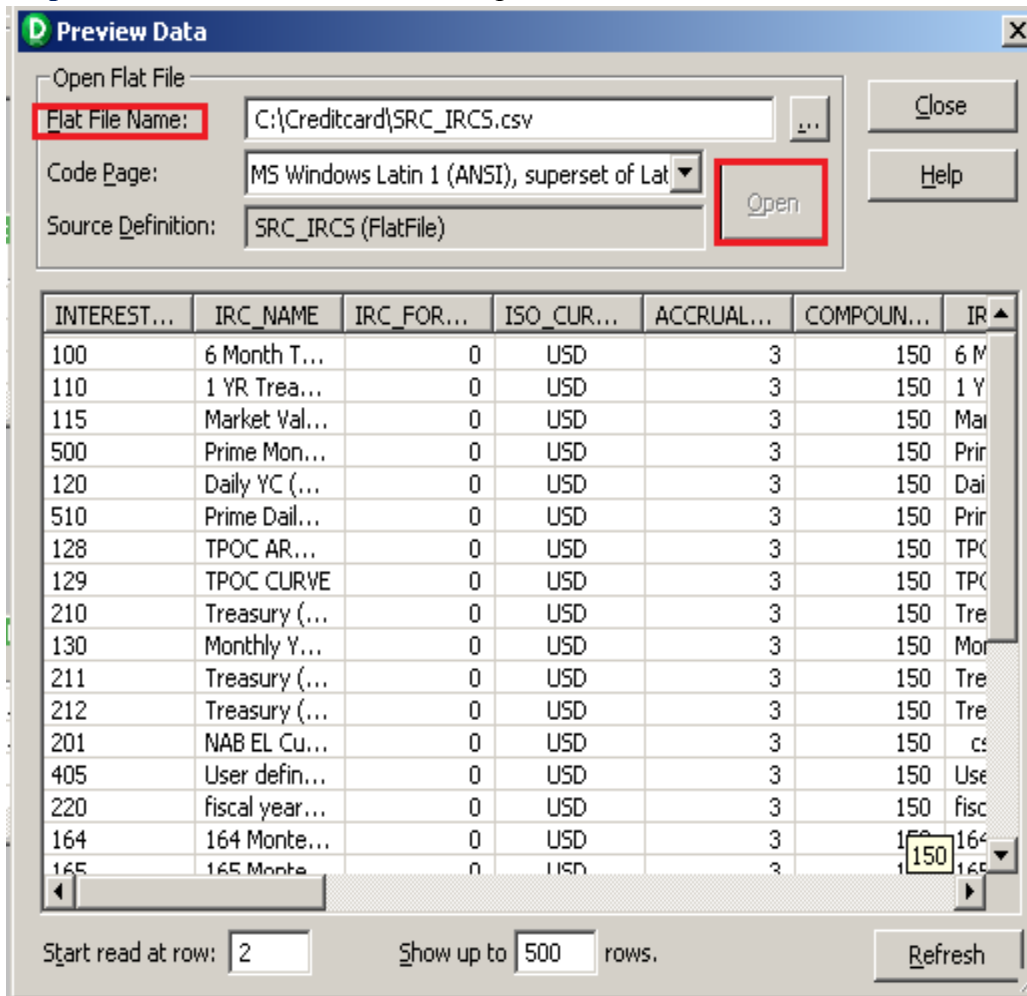
Step-17 Select Key Type and also specify its primary table and primary columns.



Step-18 Now right click on table to see Preview Data.

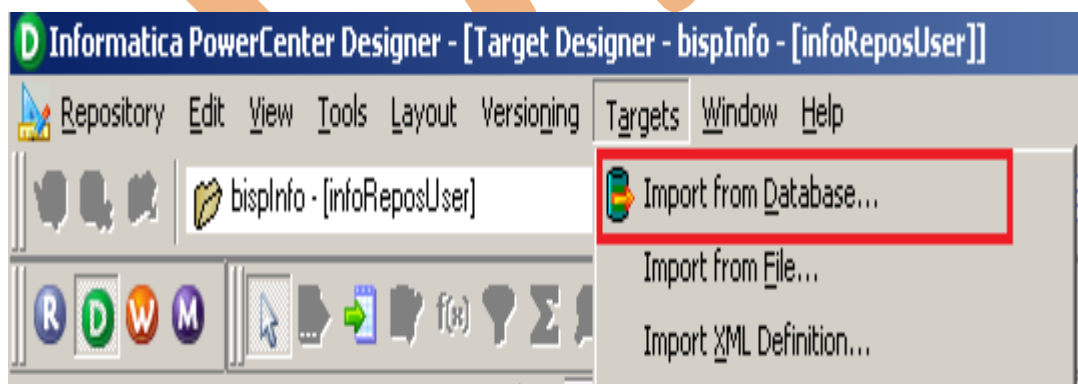


Step-19 Select Flatfile Location and open it.

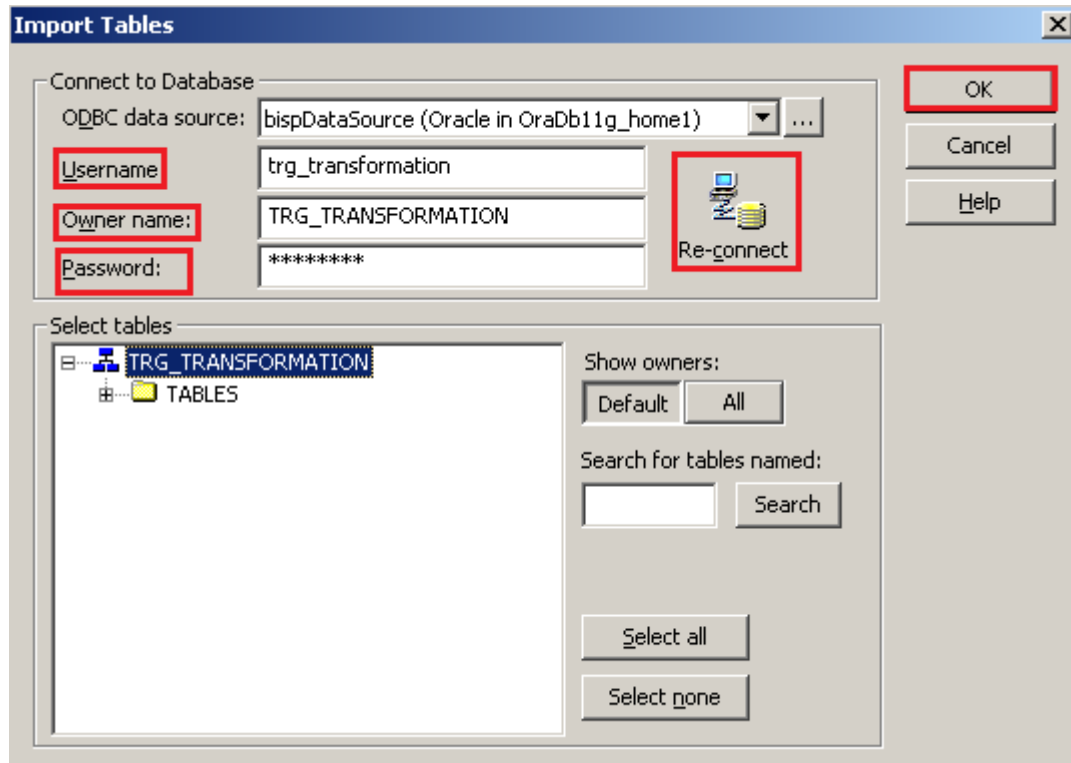


Step-20 Now click on Target Designer.

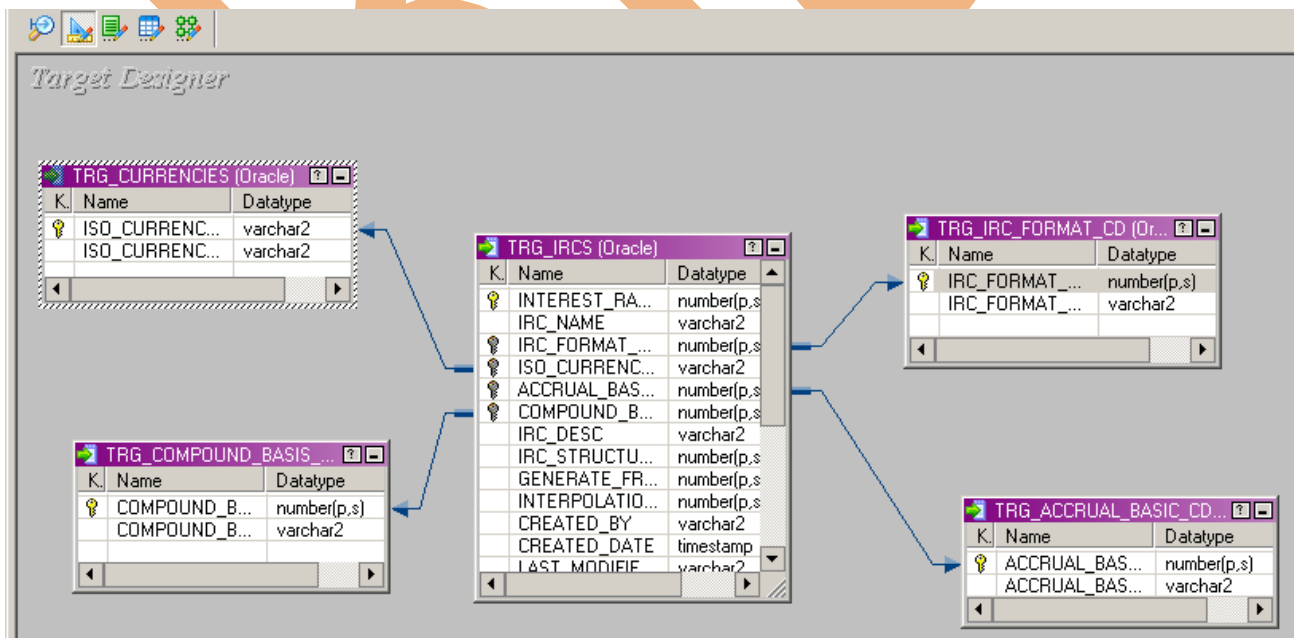
Step-21 And then select Target menu and click on Import from database to import target table.



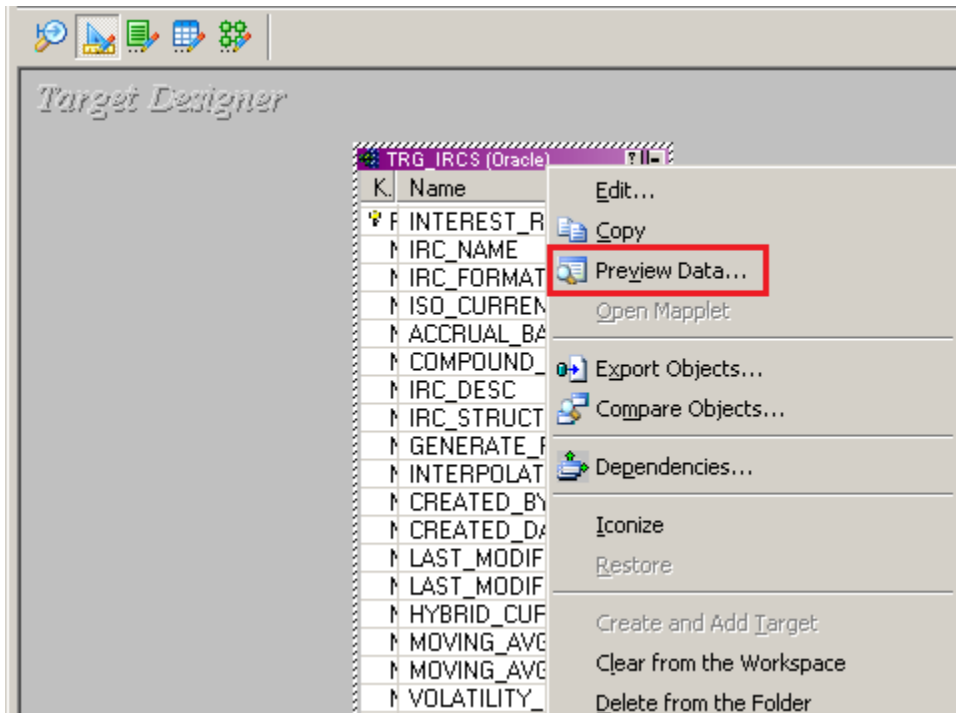
Step-22 Specify Username, Owner name, password and then click on connect and then select table and then OK.



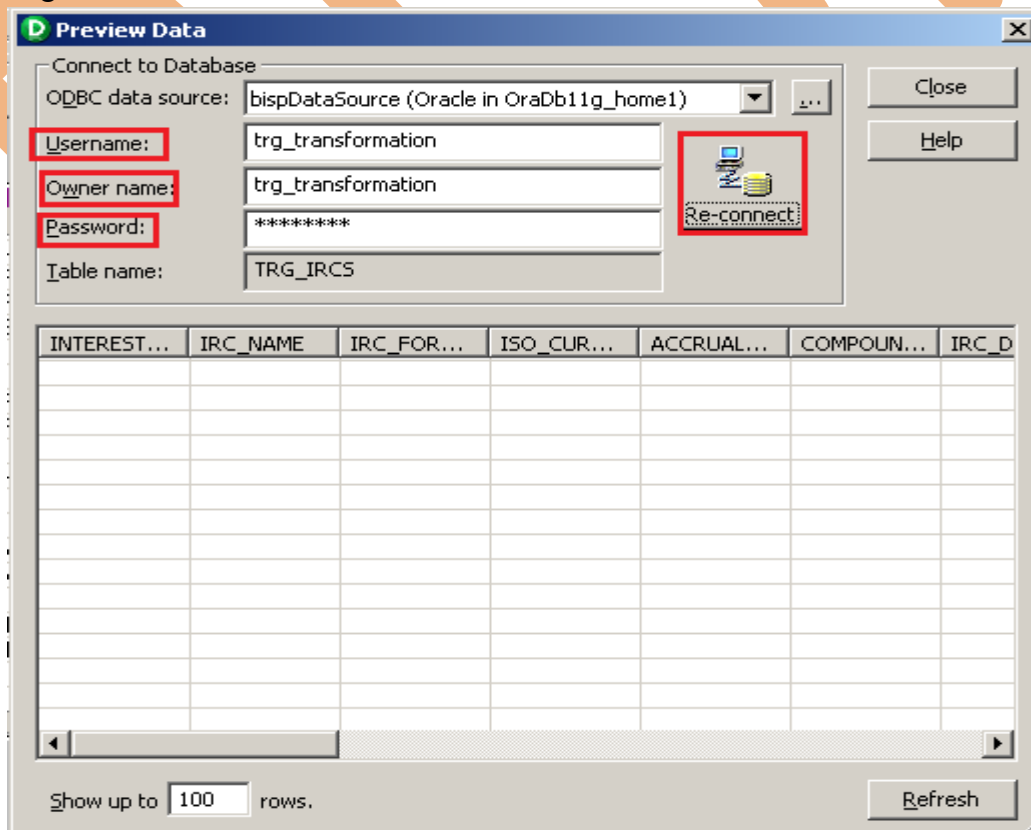
Step-23 Target table in Target Designer.




Step-24 To view data select table and Right click on that table after that specify Username and Password and then connect it. Then Close



Step-25 Target data.

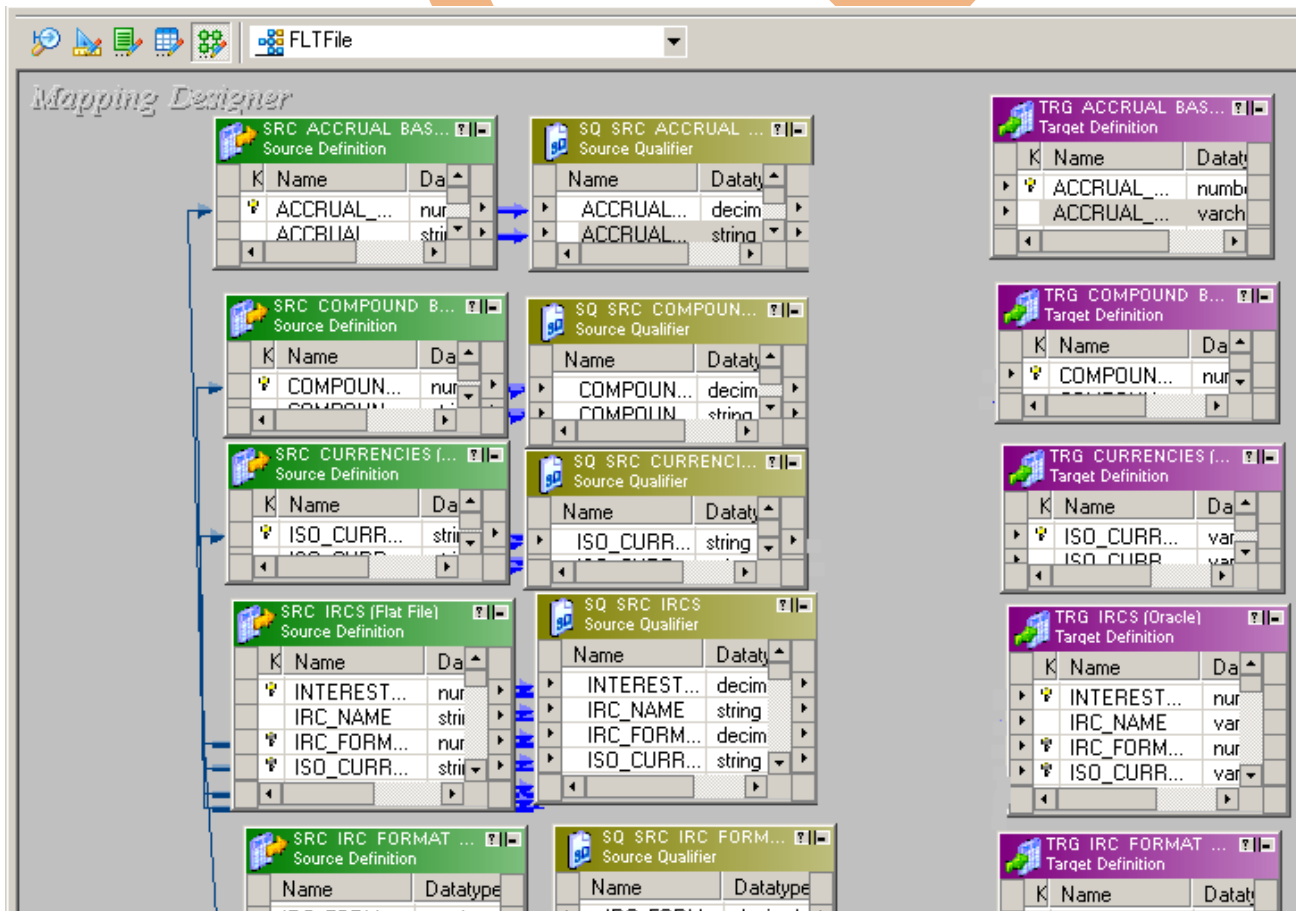


CREATE MAPPING

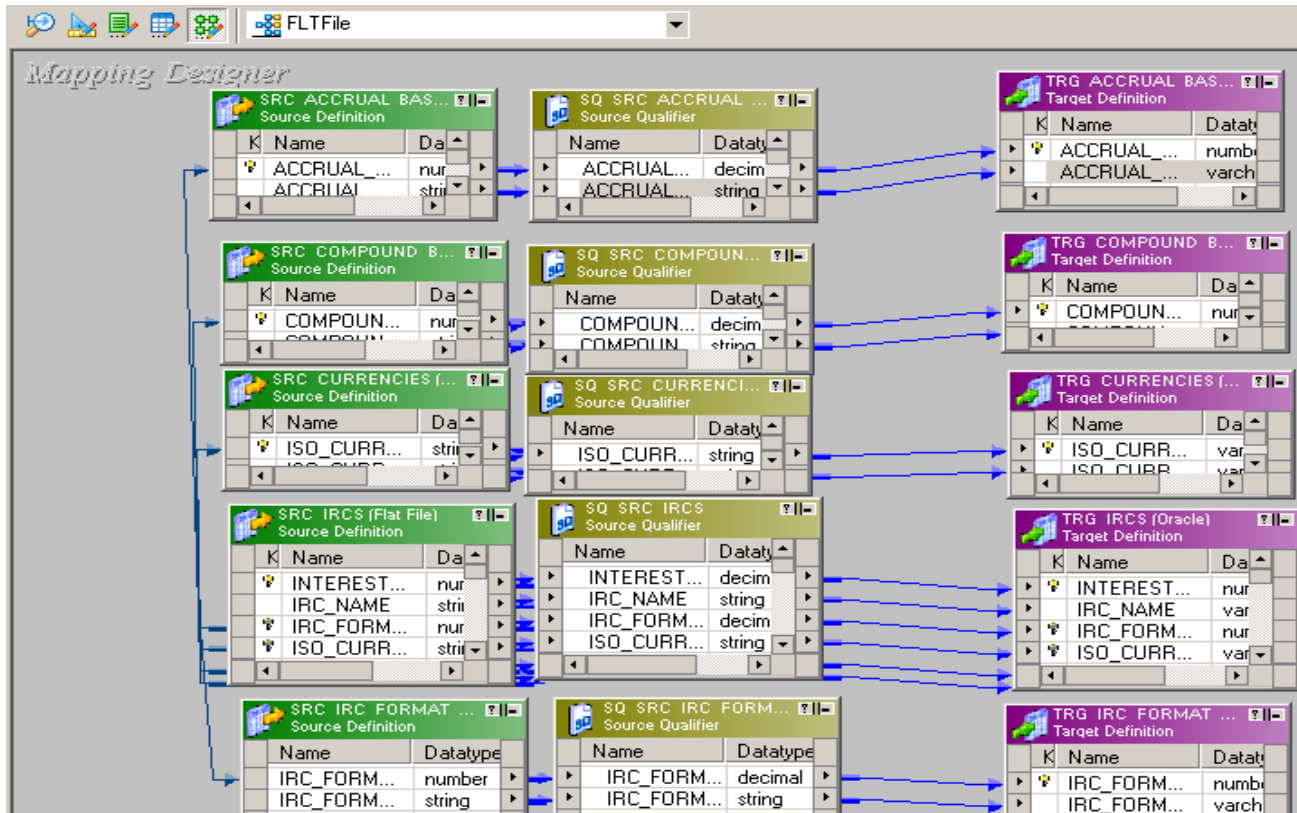
Step-1 Go to Mapping Designer  and Create New Mapping and then name of mapping and click OK.



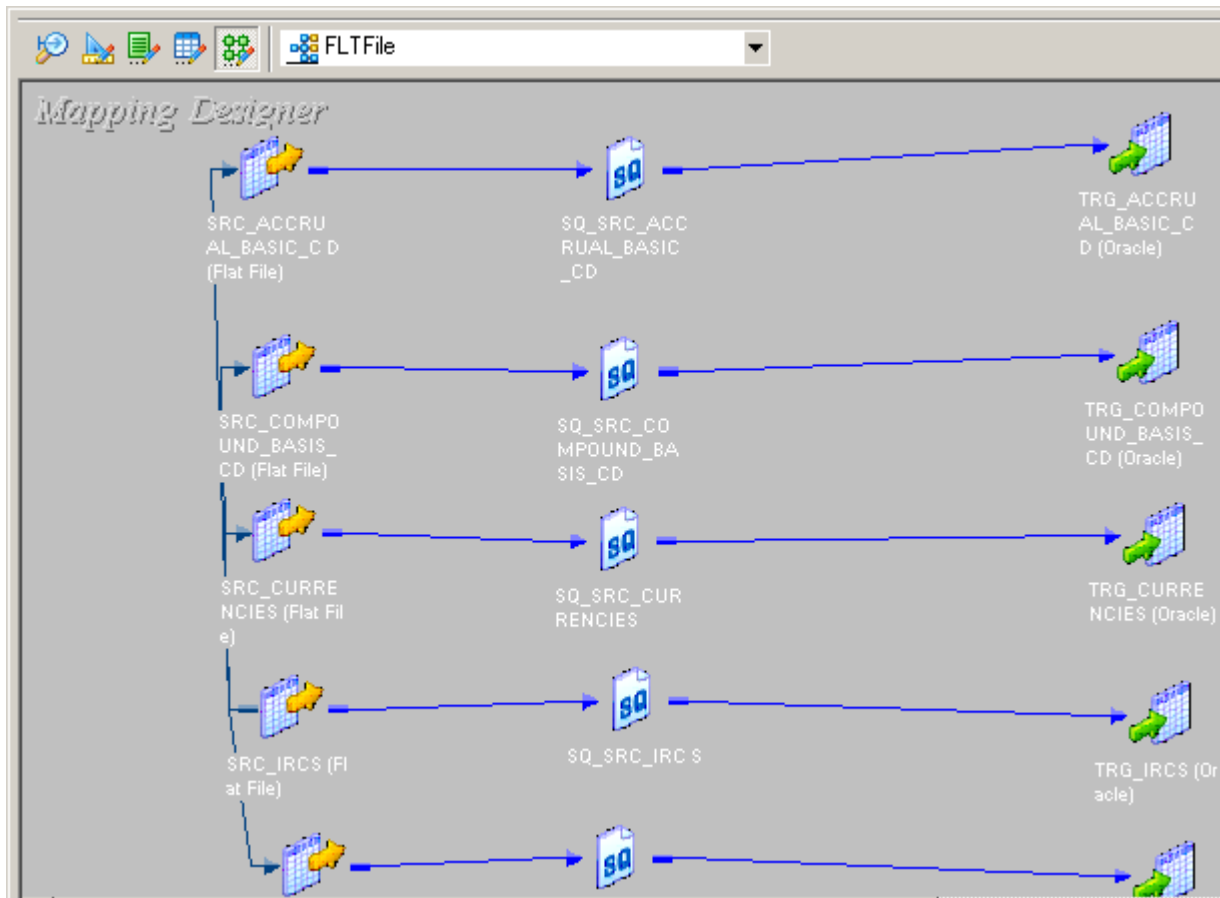
Step-2 Then drag and drop source and target data in Mapping Designer.



Step-5 Then Create Mapping.



Step-6 Mapping.



Step-7 . Save this mapping.

11/03/2012 15:29:44 ** Saving... Repository infoReposUser, Folder Credit_Card

Validating transformations of mapping Fltfile_RDBMS...

...transformation validation completed with no errors.

Validating data flow of mapping Fltfile_RDBMS...

...data flow validation completed with no errors.

Parsing mapping Fltfile_RDBMS...

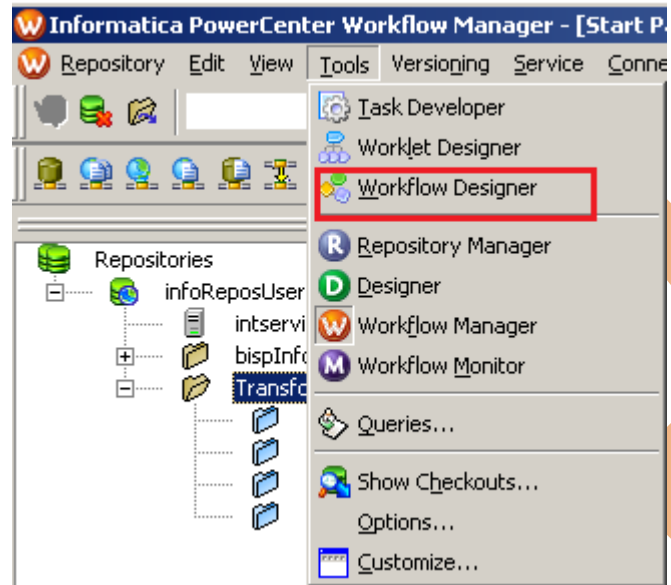
...parsing completed with no errors.

***** Mapping Fltfile_RDBMS is VALID *****

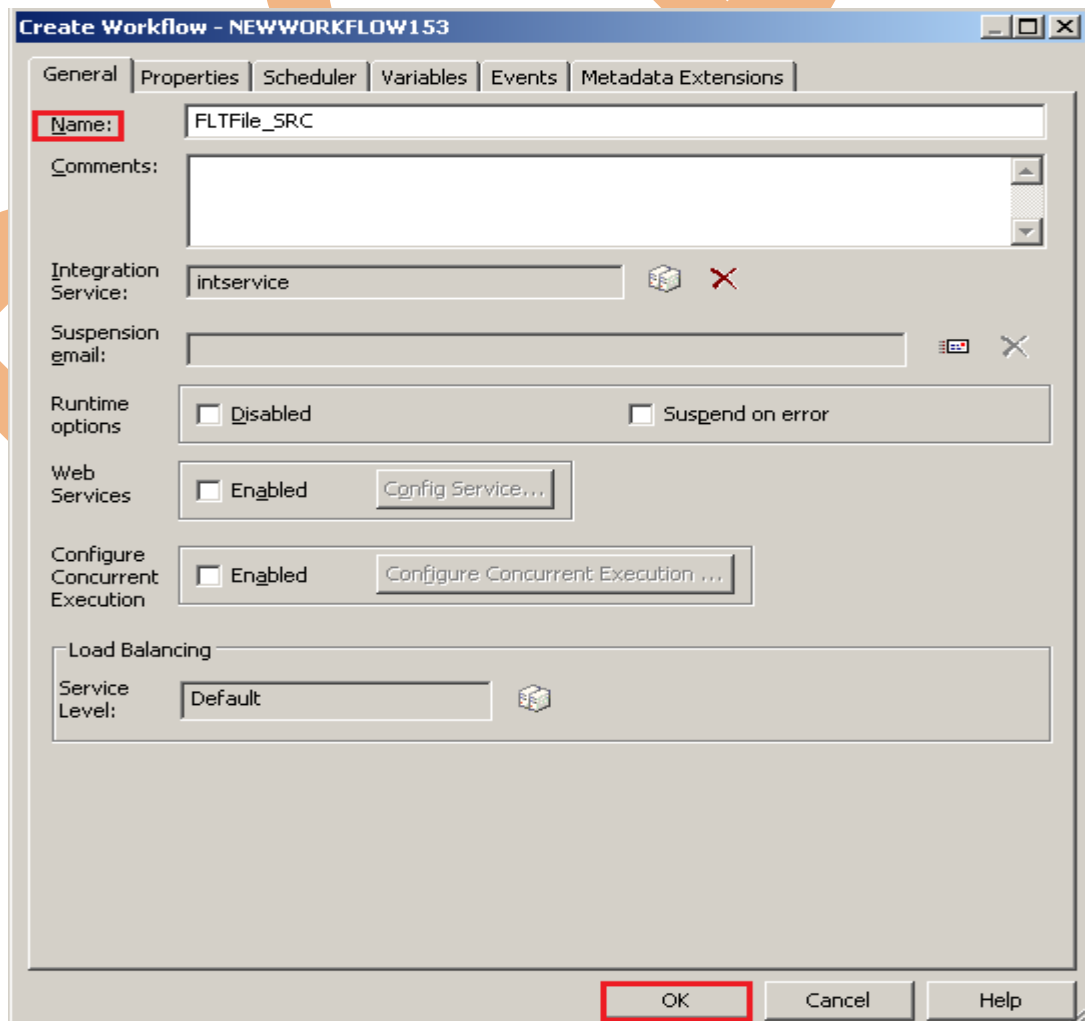
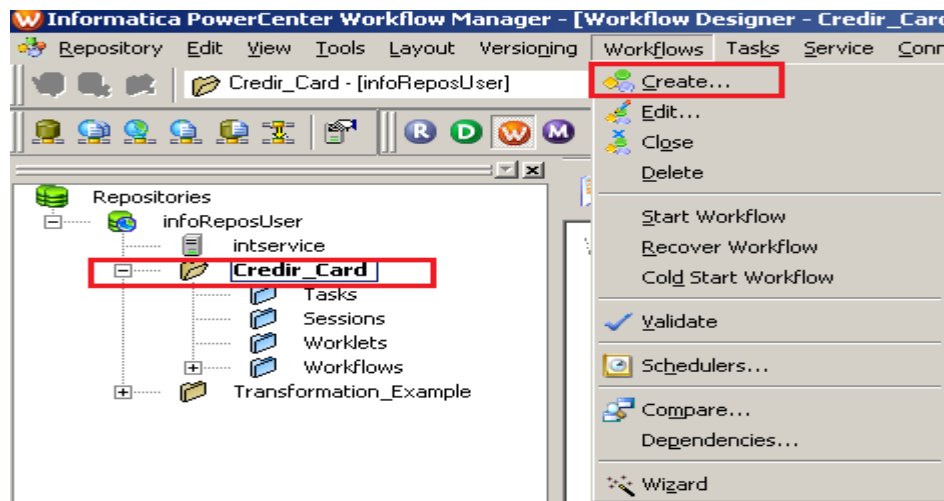
mapping Fltfile_RDBMS updated.

CREATE WORKFLOW

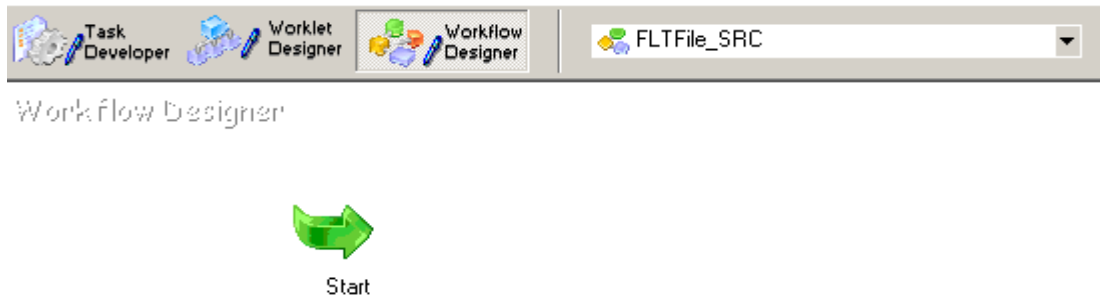
Step-1 Now go to Informatica Power Center Workflow Manager, and go to Tools menu and select Workflow Designer.



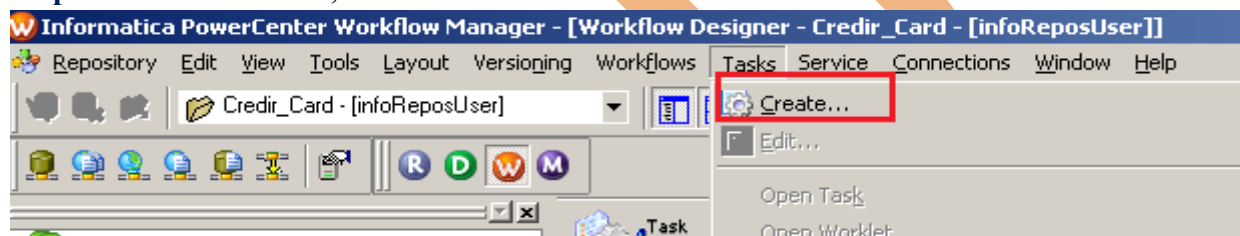
Step-2 Now to create workflows, Go to Workflows menu and select Create. After that Name of workflow and click OK buttons.



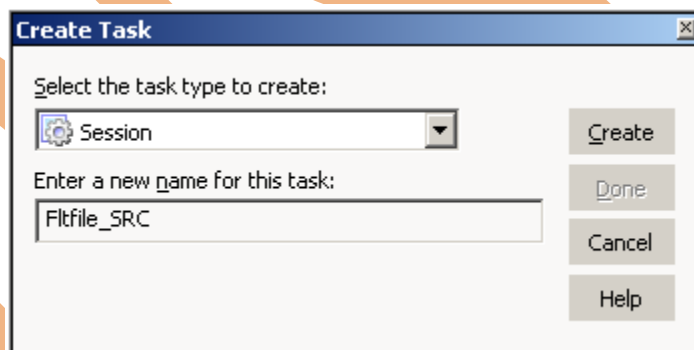
Step-3 Now workflow created.



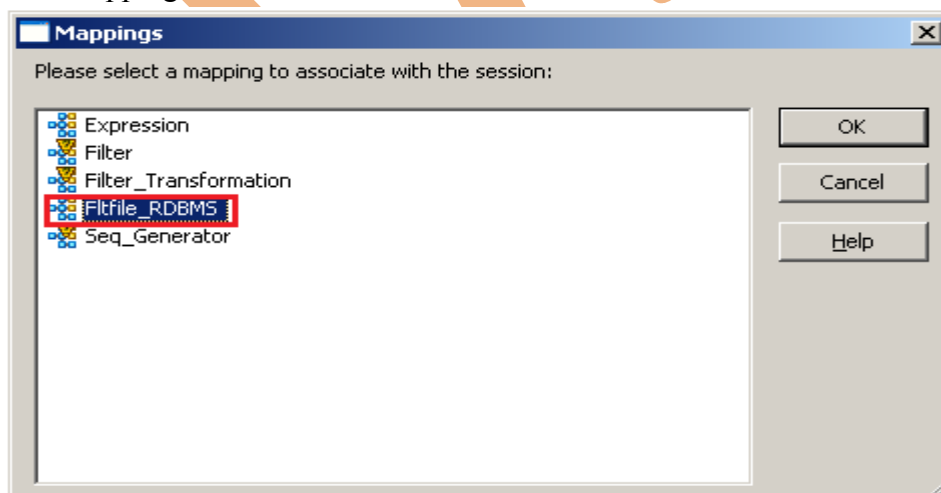
Step-4 Now create Task, Go to Tasks Menu and click Create.



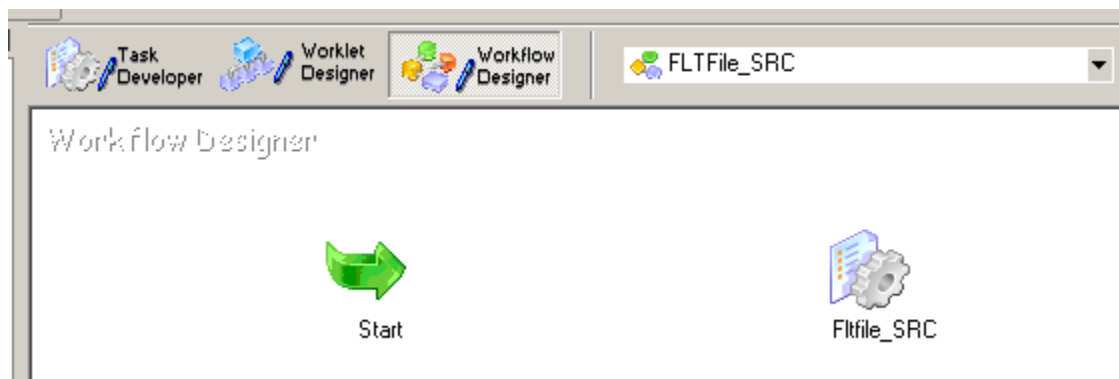
Step-5 Now select session and insert Name of task.



Step-6 Select Mapping to associate with the session.



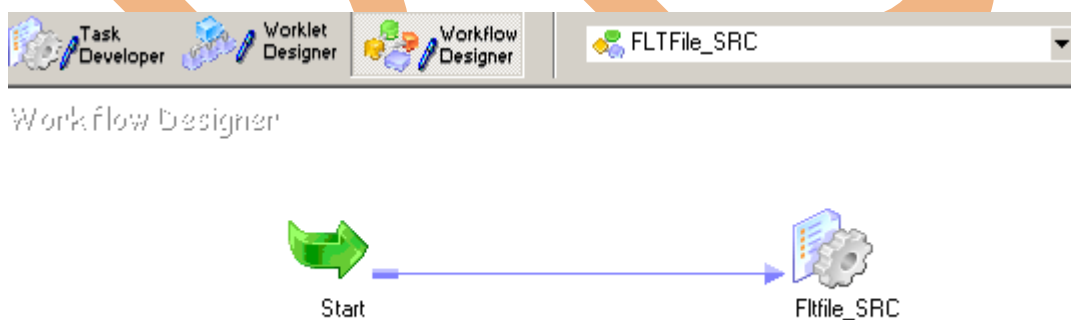
Step-7 Workflow Designer Window.



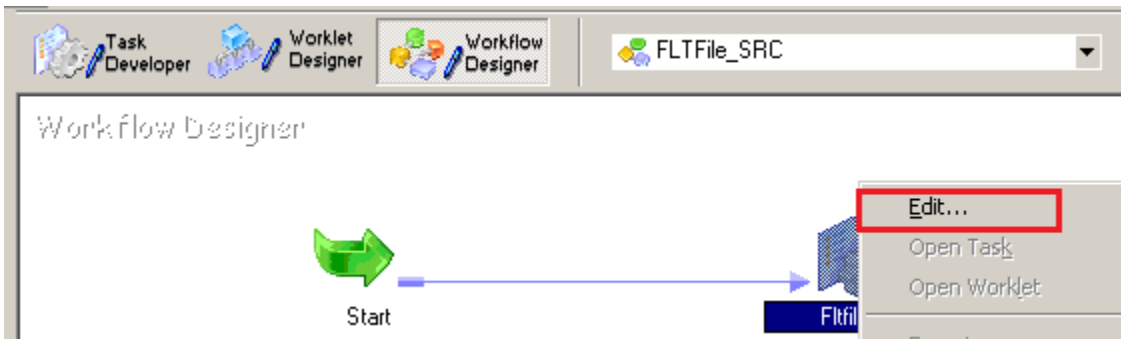
Step-8 Now create flow B/W Workflow to Task. Select Line Task and link to Start to Filter.



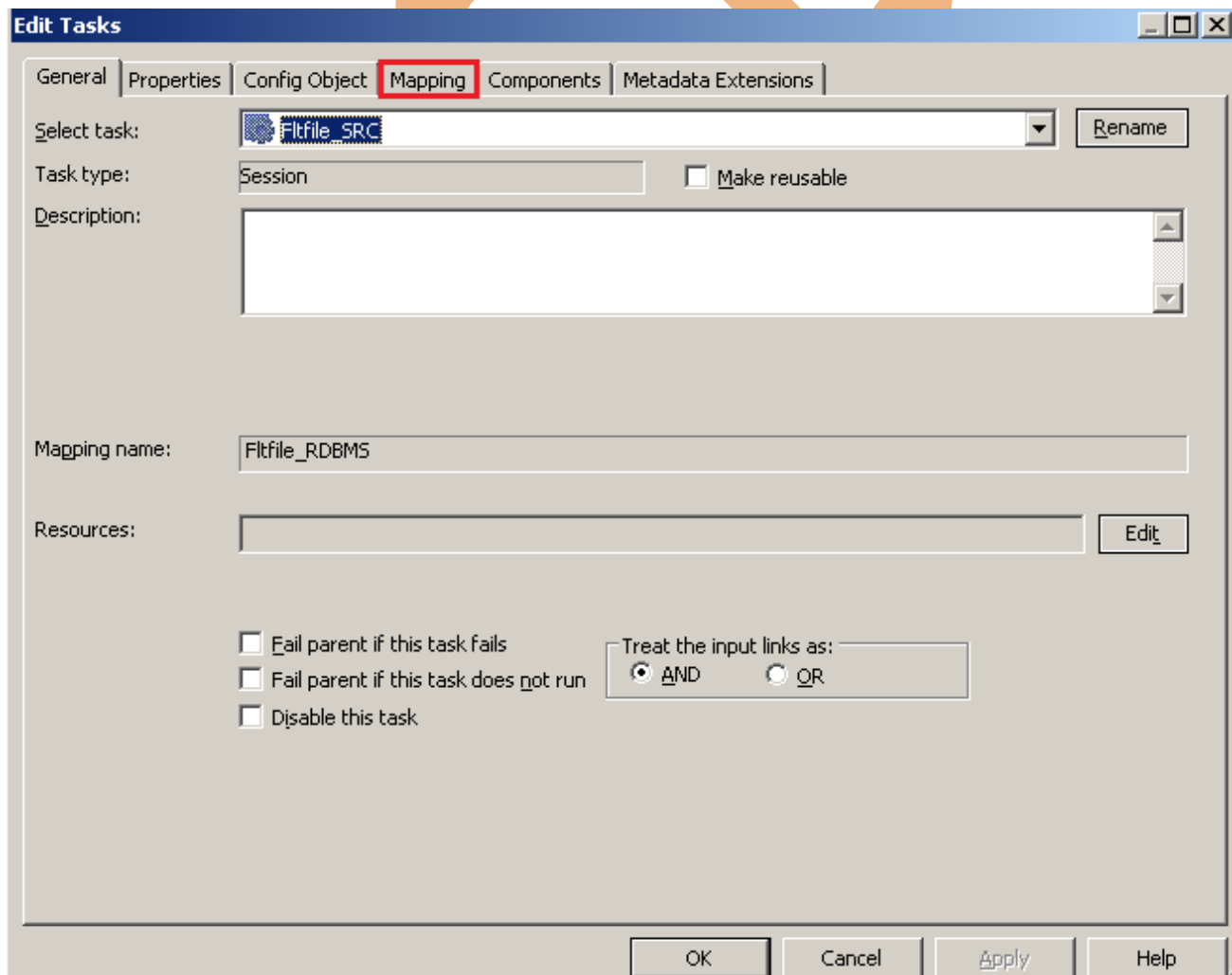
Step-9 Work Flow Designer Windows.

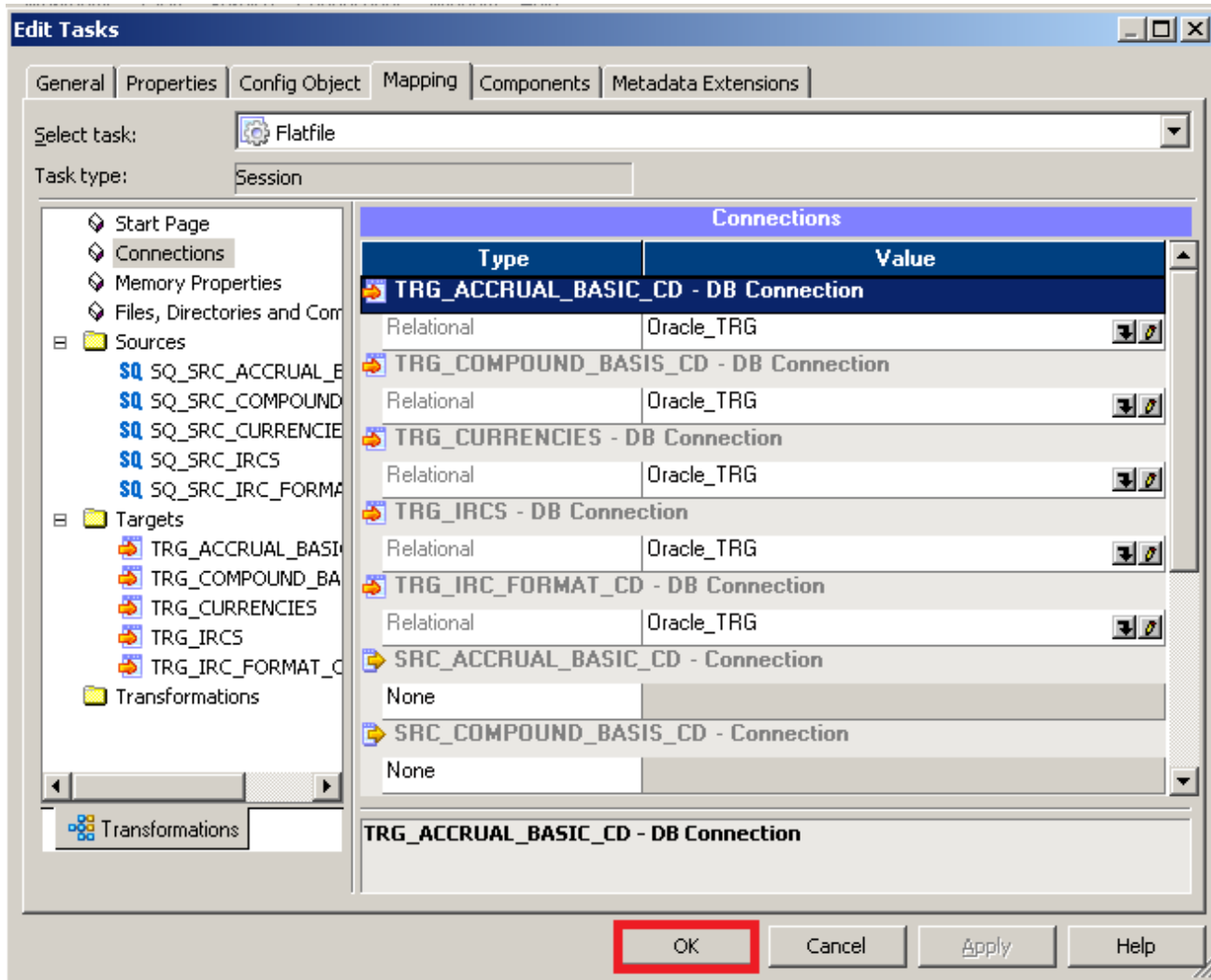


Step-10 Now Configure Connection to Target, Then Right Click on Expression and Edit, Then Click Mapping tab and configure connection for your Target table schema in oracle 11g RDBMS. And then click OK.



Step-11 Select DB Connection for Source and Target Relation Database.





Step-12 Now save (ctrl+s) this workflow and check it.

11/03/2012 15:38:57 ** Saving... Repository infoReposUser, Folder Credit_Card

Validating the flow semantics of Workflow FLTFile_SRC...
...flow semantics validation completed with no errors.

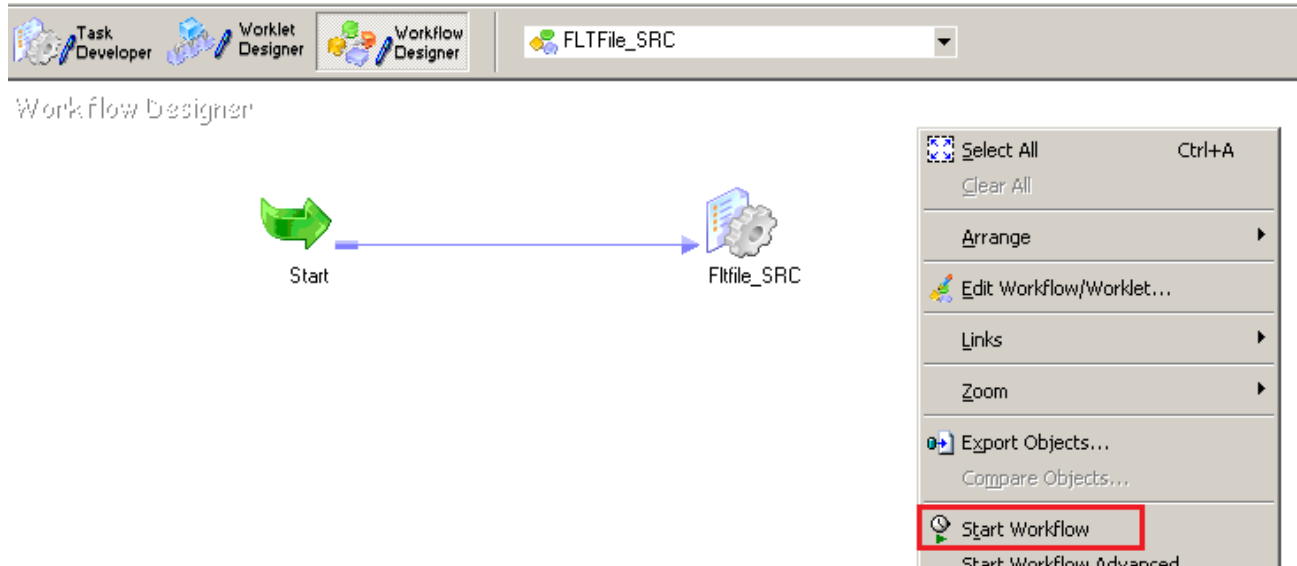
Validating tasks of Workflow FLTFile_SRC...
...Workflow FLTFile_SRC tasks validation completed with no errors.

***** Workflow FLTFile_SRC is VALID *****

Workflow FLTFile_SRC inserted.

WORKFLOW MONITOR AND VIEW TARGET DATA

Step-1 Now Start Workflow, Right click on Workflow Designer Window and Click on Start Workflow.



Step-2 Check session in Informatica PowerCenter Workflow Monitor.

FLTFile_SRC				
FLTFile_SRC	11/3/2012 3:39:47 PM	11/3/2012 3:39:58 PM	Succeeded	
Fltfile_SRC	11/3/2012 3:39:47 PM	11/3/2012 3:39:52 PM	Succeeded	

Step-3 Session log.

Log Events for Session: Fltfile_SRC

Severity	Timestamp	Node	Thread	Message Co...	Message
INFO	11/3/2012 4:18:31 PM	node01_mitest	DIRECTOR	TM_6014	Initializing session [Fltfile_SRC] at [Sat Nov 03 16:18:31 2012].
INFO	11/3/2012 4:18:31 PM	node01_mitest	DIRECTOR	TM_6683	Repository Name: [infoReposUser]
INFO	11/3/2012 4:18:31 PM	node01_mitest	DIRECTOR	TM_6684	Server Name: [intservice]
INFO	11/3/2012 4:18:31 PM	node01_mitest	DIRECTOR	TM_6686	Folder: [Credir_Card]
INFO	11/3/2012 4:18:31 PM	node01_mitest	DIRECTOR	TM_6685	Workflow: [FLTFile_SRC] Run Instance Name: [] Run Id: [133]
INFO	11/3/2012 4:18:31 PM	node01_mitest	DIRECTOR	TM_6101	Mapping name: Fltfile_RDBMS [version CheckedOut].
INFO	11/3/2012 4:18:31 PM	node01_mitest	DIRECTOR	TM_6964	Date format for the Session is [MM/DD/YYYY HH24:MI:SS.US]
INFO	11/3/2012 4:18:31 PM	node01_mitest	DIRECTOR	TM_6703	Session [Fltfile_SRC] is run by 32-bit Integration Service [node01_mitesha], version [9.0.1 HotFix2], build [1111].
INFO	11/3/2012 4:18:31 PM	node01_mitest	MANAGER	PETL 24058	Running Partition Group [1].

Severity: INFO
Timestamp: 11/3/2012 4:18:31 PM
Node: node01_mitesha
Thread: MAPPING
Process ID: 5772
Message Code: TM_6156
Message: Using low precision processing.

Step-4 Now view data in Target RDBMS (Oracle 11g) for table TRG_IRCS

admin TRG_IRCS									
Columns	Data	Constraints	Grants	Statistics	Column Statistics	Triggers	Dependencies	Details	Partitions
Sort... Filter: Enter Where Clause Actions..									
	INTEREST_RATE_CD	IRC_NAME	IRC_FORMAT_CD	ISO_CURRENCY_CD	ACCRUAL_BASIS_CD	COMPOUND_BASIS_CD	IRC_DESC	IRC_STRUCTURE_TYPE	GENERATE_FREQUENCY_FLG
1	100	6 Month ...	0	USD	3	150	6 Month ...	1	(null)
2	500	Prime Mo...	0	USD	3	150	Prime M...	1	(null)
3	120	Daily YC ...	0	USD	3	150	Daily YC ...	1	(null)
4	510	Prime Dai...	0	HKD	3	150	Prime Da...	1	(null)
5	128	TPOC AR...	0	ADP	3	150	TPOC A...	1	(null)
6	130	Monthly ...	0	USD	3	150	Monthly ...	1	(null)
7	212	Treasury...	0	USD	3	150	Treasur...	1	(null)
8	405	User defi...	0	USD	3	150	User def...	1	(null)
9	220	fiscal ye...	0	HKD	3	150	fiscal ye...	1	(null)
10	164	164 Mon...	0	USD	3	150	164 Mon...	1	(null)
11	165	165 Mon...	0	USD	3	150	165 Mon...	1	(null)
12	166	166 Mon...	0	USD	3	150	166 Mon...	1	(null)
13	168	168 Mon...	0	USD	3	150	168 Mon...	1	(null)
14	219	Hull and ...	0	USD	3	150	Hull and ...	1	(null)
15	200	TREASU...	1	USD	3	150	TREASU...	1	(null)

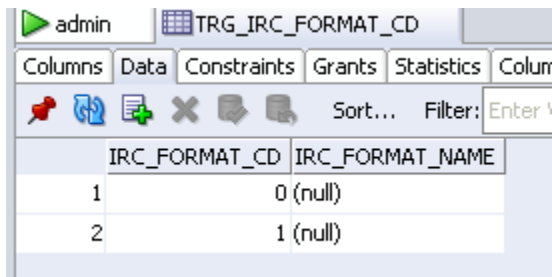
Step-4 Now view data in Target RDBMS (Oracle 11g) for table TRG_Accrual_Basic_CD.

admin TRG_ACCRUAL_BASIC_CD	
Columns	Data
Sort... Filter: Enter Where Clause	
	ACCRUAL_BASIC_CD
1	1 asdf01
2	2 jk;02
3	3 sdfsdfl
4	4 dfasf
5	5 vdfts
6	6 drtbs

Step-4 Now view data in Target RDBMS (Oracle 11g) for table TRG_Currencies

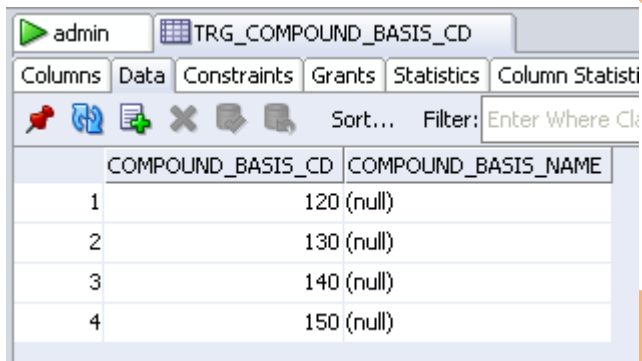
admin TRG_CURRENCIES	
Columns	Data
Sort... Filter: Enter W	
	ISO_CURRENCY_CD
1	USD
2	HKD
3	ADP

Step-4 Now view data in Target RDBMS (Oracle 11g) for table TRG_IRC_FORMAT_CD.



	IRC_FORMAT_CD	IRC_FORMAT_NAME
1	0 (null)	
2	1 (null)	

Step-4 Now view data in Target RDBMS (Oracle 11g) for table TRG_COMPOUND_BASIS_cD



	COMPOUND_BASIS_CD	COMPOUND_BASIS_NAME
1	120 (null)	
2	130 (null)	
3	140 (null)	
4	150 (null)	