



Informatica Power Center 9.0.1

Informatica Working with Parameter File

Informatica Lab #33

Description:

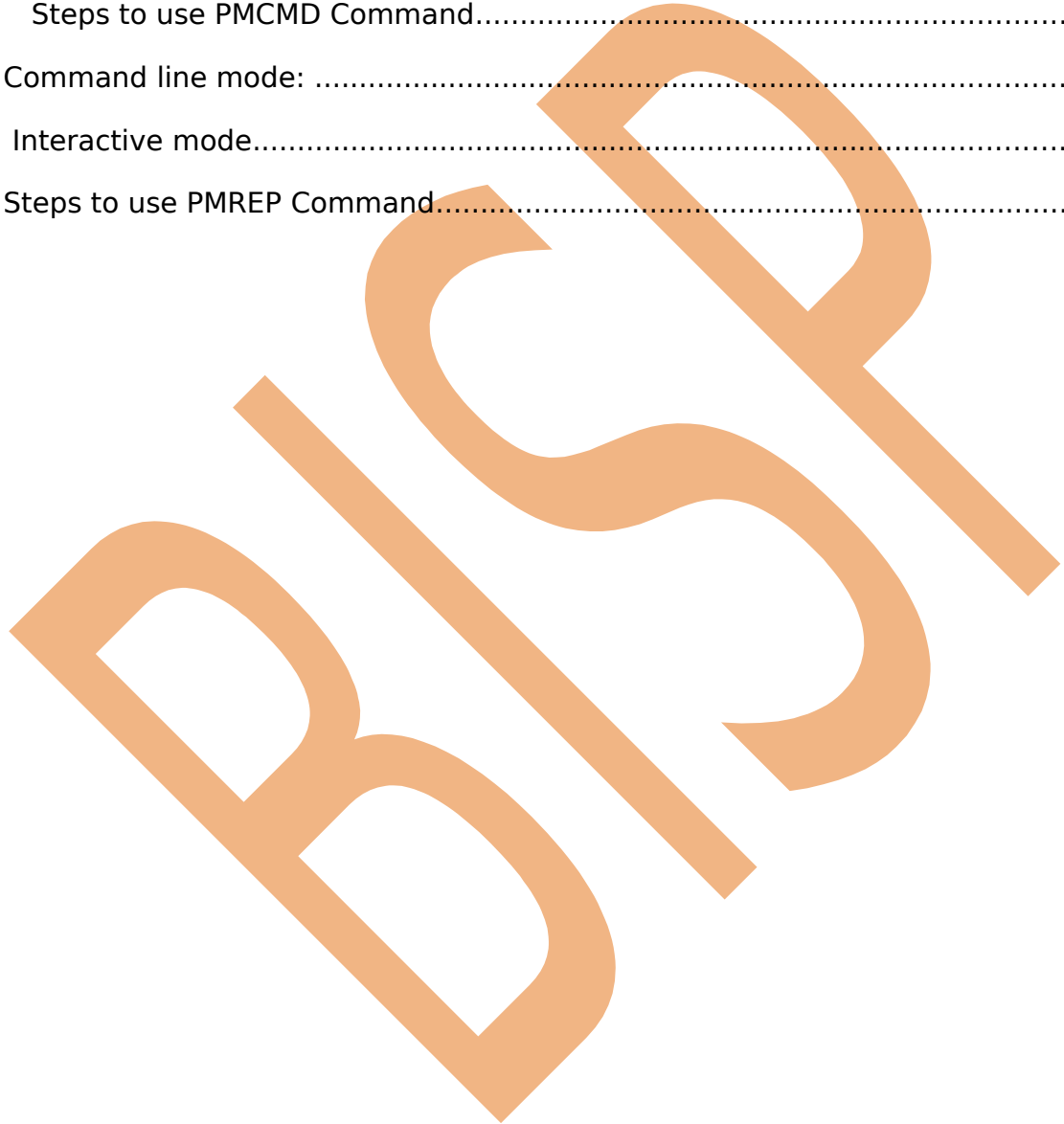
BISP is committed to provide BEST learning material to the beginners and advance learners. In the same series, we have prepared a complete end-to end Hands-on Guide for building financial data model in Informatica. The document focuses on how the real world requirement should be interpreted. The mapping document template with very simplified steps and screen shots makes the complete learning so easy. The document show how to use parameter file with variables. [Join our professional training program and learn from experts.](#)

History:

Version	Description Change	Author	Publish Date
0.1	Initial Draft	Upendra Upadhyay	12th Aug 2011
0.1	Review#1	Amit Sharma	18 th Aug 2011

Contents

Contents.....	2
PMCMD	3
Command line mode	3
Interactive mode	3
Steps to use PMCMD Command.....	3
Command line mode:	10
Interactive mode.....	10
Steps to use PMREP Command.....	10



PMCMD

PMCMD is a program you use to communicate with the Integration Service. With pmcmd, you can perform some of the tasks that you can also perform in the Workflow Manager, such as starting and stopping workflows and sessions.

Use pmcmd in the following modes.

Command line mode

You invoke and exit pmcmd each time you issue a command. You can write scripts to schedule workflows with the command line syntax. Each command you write in command line mode must include connection information to the Integration Service.

Interactive mode

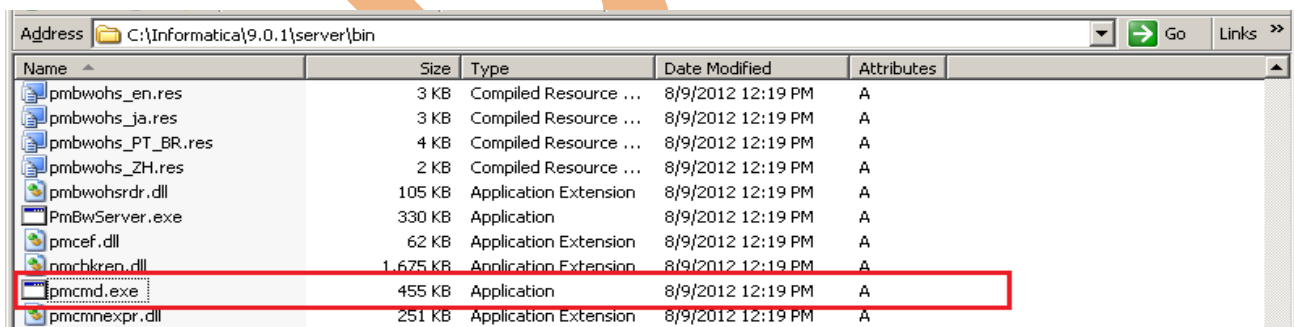
You establish and maintain an active connection to the Integration Service. This lets you issue a series of commands.

You can use environment variables for user names and passwords with pmcmd. You can also use environment variables to customize the way pmcmd displays the date and time on the machine running the Integration Service process. Before you use pmcmd, configure these variables on the machine running the Integration Service process. The environment variables apply to pmcmd commands that run on the node.

Note: If the domain is a mixed-version domain, run pmcmd from the installation directory of the Integration Service version.

Steps to use PMCMD Command

Step-1 Go to My Computer and click on **C:** Drive or Informatica installation directory and then go to this path Informatica ➡ 9.0.1 ➡ Server ➡ bin and then click on pmcmd.exe.



```
C:\Informatica\9.0.1\server\bin\pmcmd.exe
Informatica(r) PMCMD, version [9.0.1 HotFix2], build [242.1111], Windows 32-bit
Copyright (c) Informatica Corporation 1994 - 2010
All Rights Reserved.

Invoked at Tue May 07 12:24:00 2013

pmcmd> _
```

Step-2 Now connect to integration services with domain.

Syntax :-

Connect -sv integration service name -d Domain Name -u Username -p Password.

```
C:\Informatica\9.0.1\server\bin\pmcmd.exe
Informatica(r) PMCMD, version [9.0.1 HotFix2], build [242.1111], Windows 32-bit
Copyright (c) Informatica Corporation 1994 - 2010
All Rights Reserved.

Invoked at Tue May 07 12:31:47 2013

pmcmd> connect -sv intservice -d Domain_Mitesha -u infouser -p password
Connected to Integration Service: [intservice].
pmcmd>
```

Step-3 Execute Workflow through PMCMD. So firstly connect to integration service, domain with username and then execute workflow.

Syntax :-

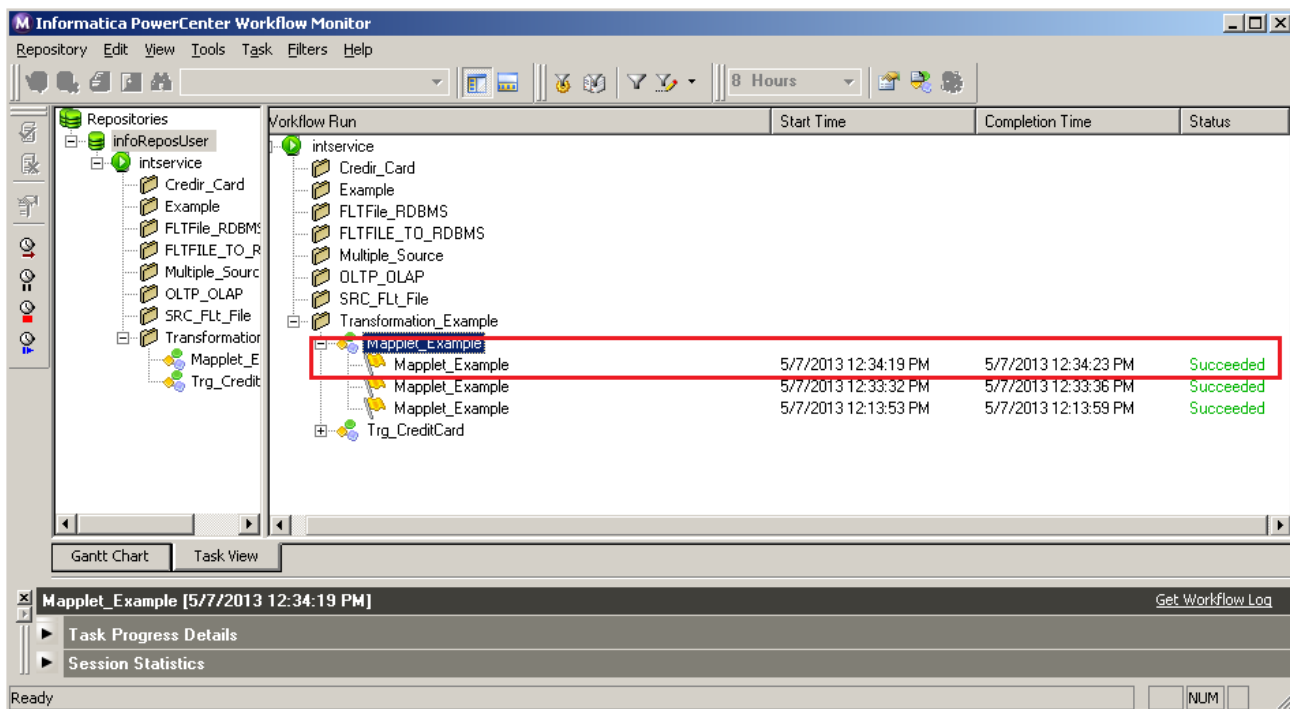
startworkflow -f Folder name workflow name

```
Informatica(r) PMCMD, version [9.0.1 HotFix2], build [242.1111], Windows 32-bit
Copyright (c) Informatica Corporation 1994 - 2010
All Rights Reserved.

Invoked at Tue May 07 12:31:47 2013

pmcmd> connect -sv intservice -d Domain_Mitesha -u infouser -p password
Connected to Integration Service: [intservice].
pmcmd> startworkflow -f transformation_example Mapplet_Example
pmcmd> _
```

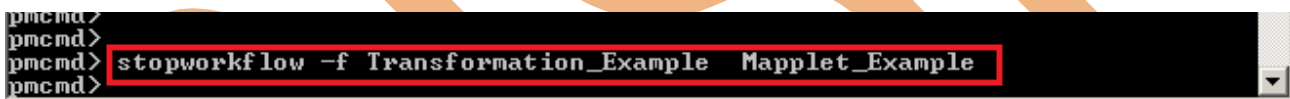
Step-4 Now see the result in Informatica PowerCenter Workflow Monitor.



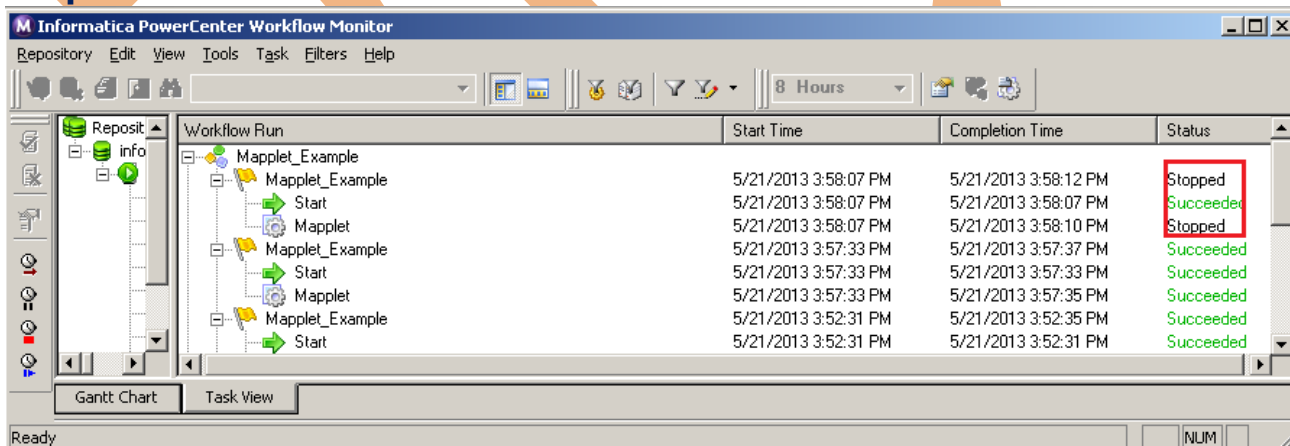
Step-5 Stop running Workflow using PMCMD.

Syntax :-

stopworkflow -f Folder name workflow name



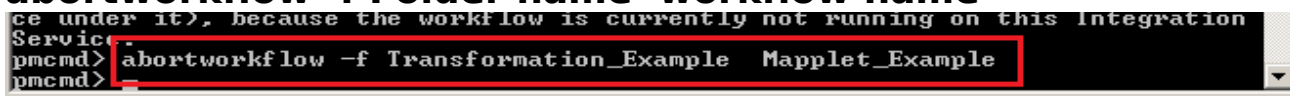
Step-6 Now see the result in Informatica PowerCenter Workflow Monitor.



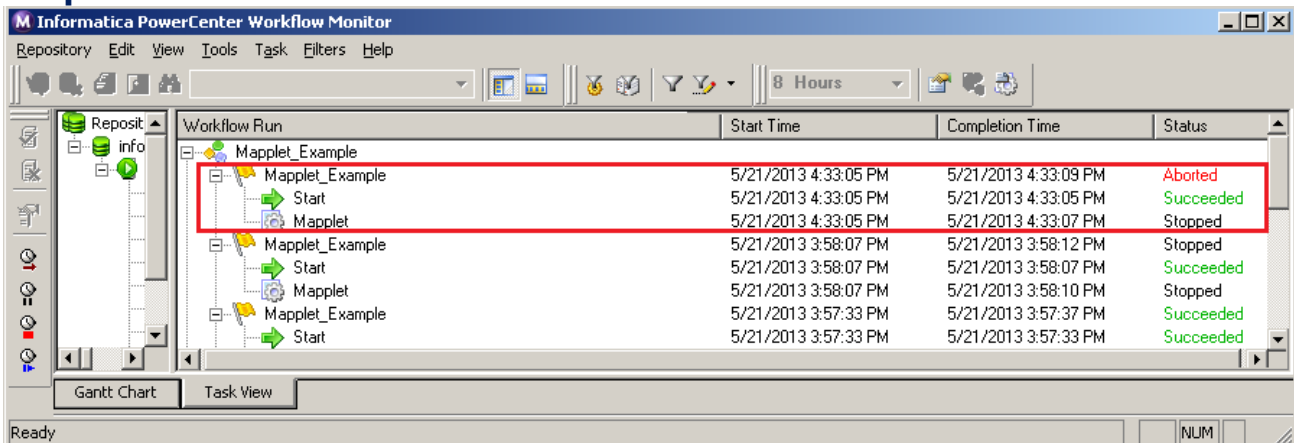
Step-7 Abort Workflow using PMCMD.

Syntax :-

abortworkflow -f Folder name workflow name



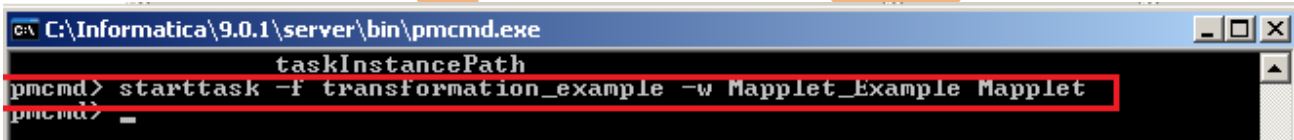
Step-8 Now see the result in Informatica PowerCenter Workflow Monitor.



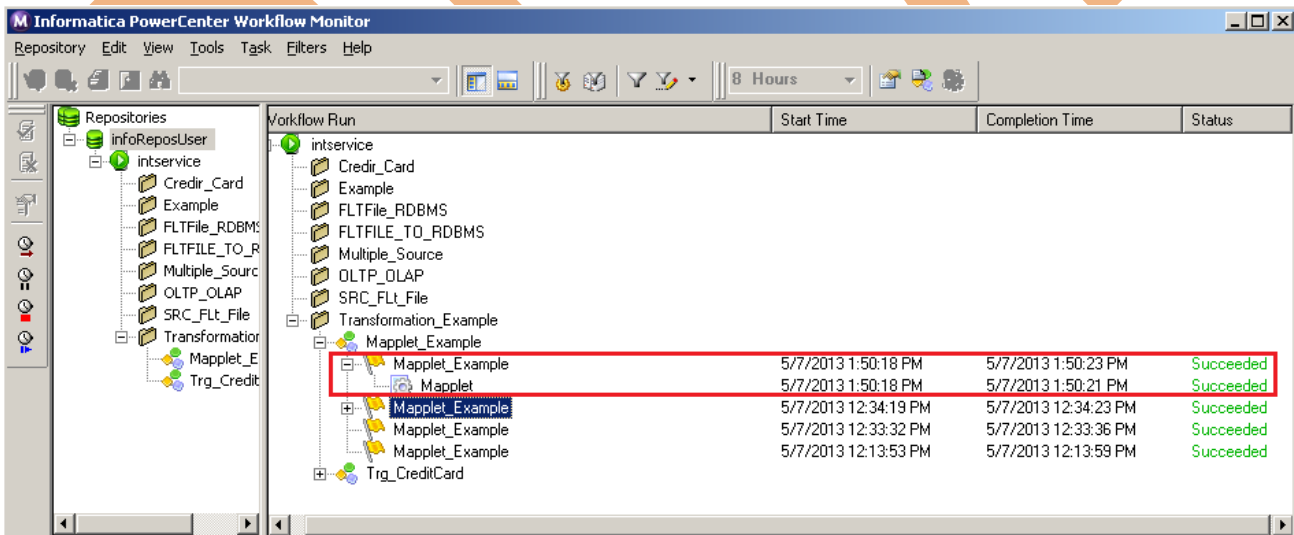
Step-9 Now execute Task.

Syntax :-

starttask -f Folder Name -w Workflow Name Task Name



Step-10 Now see result into Informatica PowerCenter Workflow Manager,



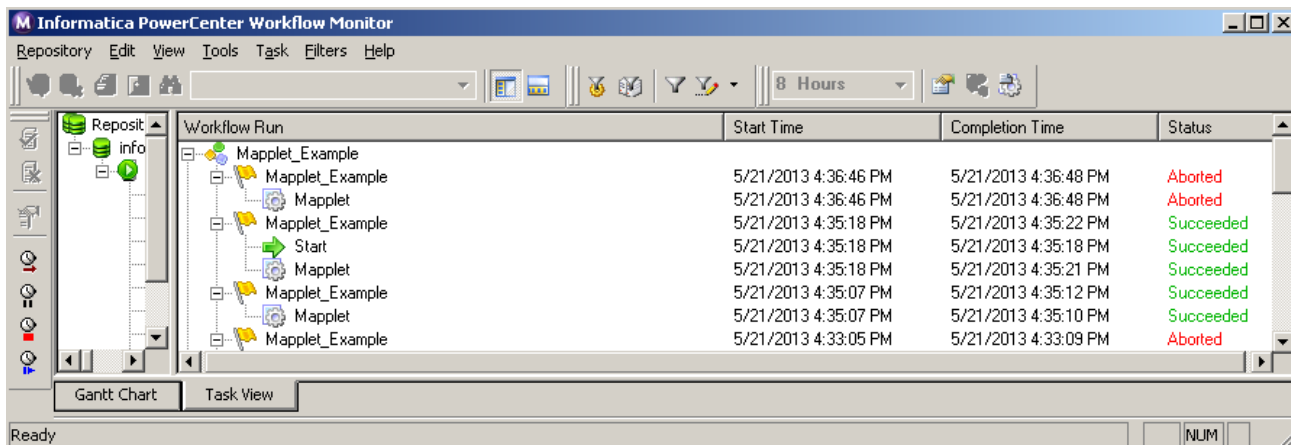
Step-11 Abort task using PMCMD.

Syntax :-

aborttask -f Folder Name -w Workflow Name task name

```
pmcmd>
pmcmd>
pmcmd> aborttask -f Transformation_Example -w Mapplet_Example Mapplet
pmcmd>
```

Step-12 Now see result into Informatica PowerCenter Workflow Manager,



Step-13 Now setfolder,
Syntax :-
setfolder Folder Name

```
C:\Informatica\9.0.1\server\bin\pmcmd.exe
pmcmd> setfolder folder -f transformation_example
ERROR: Unexpected argument [-f].
Usage: setfolder folder
pmcmd> setfolder transformation_example
pmcmd> _
```

Step-14 Now get services properties.
Syntax :-
getserviceproperties

```
C:\Informatica\9.0.1\server\bin\pmcmd.exe
[<-recovery!-norecovery>] [<-runinsname!-rin> runInsName]
taskInstancePath
pmcmd> starttask -f transformation_example -w Mapplet_Example Mapplet
pmcmd> getserviceproperties
Informatica Data Integration Domain: [Domain_mitesha]
Integration Service: [intservice]
Integration Service [version [9.0.1 HotFix2], build [11111].]
Integration Service allows running debug mappings.
Integration Service moves data in UNICODE mode.
Integration Service is connected to repository service [infoReposUser] in the do
main [Domain_mitesha].
Integration Service startup time: [Tue May 07 11:14:43 2013]
Integration Service current time: [Tue May 07 13:51:59 2013]
Integration Service Grid: []
-----
Integration Service Process on Node: [node01_mitesha]
Integration Service Process is running on Operating System: [Windows].
Integration Service Process code page: [MS Windows Latin 1 (ANSI), superset of L
atin1]
Integration Service Process is running in 32-bit
Integration Service Process is running on: primary node.
Integration Service Process is taking a role as: master process.
Integration Service Process is enabled.
Integration Service OperatingMode: [Normal]
pmcmd>
```

Step-15 Now know about service is alive or not.
Syntax :-
pingservice

```
C:\Informatica\9.0.1\server\bin\pmcmd.exe
Integration Service Process is running in 32-bit
Integration Service Process is running on: primary node.
Integration Service Process is taking a role as: master process.
Integration Service Process is enabled.
Integration Service OperatingMode: [Normal]
pmcmd> pingservice
Integration Service is alive.
pmcmd> _
```

Step-16 Now know about version..
Syntax :-

version

```
C:\Informatica\9.0.1\server\bin\pmcmd.exe
atin1]
Integration Service Process is running in 32-bit
Integration Service Process is running on: primary node.
Integration Service Process is taking a role as: master process.
Integration Service Process is enabled.
Integration Service OperatingMode: [Normal]
pmcmd> pingservice
Integration Service is alive.
pmcmd> version
Informatica(r) PMCMD, version [9.0.1 HotFix2], build [242.1111], Windows 32-bit
pmcmd>
```

Step-17 Now know about task.

Syntax :-

gettaskdetails -f Folder name -w Workflow name task name

```
C:\Informatica\9.0.1\server\bin\pmcmd.exe
[<-runinsname!:-rin> runInsName taskInstancePath
pmcmd> gettaskdetails -f Transformation Example -w Mapplet Example mapplet
Integration Service status: [Running]
Integration Service startup time: [Tue May 07 11:14:43 2013]
Integration Service current time: [Tue May 07 14:59:15 2013]
Folder: [Transformation_Example]
Workflow: [Mapplet_Example] version [1].
Session Instance: [Mapplet] version [1].
Task type: [Session]
Start time: [Tue May 07 13:50:18 2013]
End time: [Tue May 07 13:50:21 2013]
Task run status: [Succeeded]
Task run error code: [0]
Task run error message: [Completed successfully.]
Integration Service: [intservice]
Integration Service Process: [node01_mitesha]
Integration Service Grid: [intservice]
Task run mode: [Normal]
-----
Node Name(s) [node01_mitesha]
Preparation fragment
Mapping: [Mapplet_Example]
Session log file: [C:\Informatica\9.0.1\server\infa_shared\SessLogs\Mapplet.log]
First error code [0]
First error message: [No errors encountered.]
Source success rows: [20]
Source failed rows: [0]
Target success rows: [0]
Target failed rows: [0]
Number of transformation errors: [0]
pmcmd> _
```

PMREP.-

PMREP is a command line program that you use to update repository information and perform repository functions. pmrep is installed in the PowerCenter Client and PowerCenter Services bin directories.

Use pmrep to perform repository administration tasks such as listing repository objects, creating and editing groups, restoring and deleting repositories, and updating session-related parameters and security information in the PowerCenter repository.

When you use pmrep, you can enter commands in the following modes:

Command line mode:

You can issue pmrep commands directly from the system command line. Use command line mode to script pmrep commands.

Interactive mode

You can issue pmrep commands from an interactive prompt. pmrep does not exit after it completes a command. You can use environment variables to set user names and passwords for pmrep. Before you use pmrep, configure these variables. The environment variables apply to pmrep commands that run on the node.

All pmrep commands require a connection to the repository except for the following commands:

Help

ListAllPrivileges

Use the pmrep Connect command to connect to the repository before using other pmrep commands.

Note: If the domain is a mixed-version domain, run pmrep from the installation directory of the Repository Service version.

Steps to use PMREP Command

Step-1 Go to My Computer and click on **C:** Drive or Informatica installation directory and then go to this path Informatica ➡ 9.0.1 ➡ Server ➡ bin and then click on pmcmd.exe.

Address Go Links >>

Name	Size	Type	Date Modified	Attributes
pmpwxpc_PT_BR.res	43 KB	Compiled Resource ...	8/9/2012 12:19 PM	A
pmpwxpc_ZH.res	18 KB	Compiled Resource ...	8/9/2012 12:19 PM	A
pmpwxrelcon.dll	60 KB	Application Extension	8/9/2012 12:19 PM	A
pmpwxwrtr.dll	166 KB	Application Extension	8/9/2012 12:19 PM	A
pmrapp.dll	66 KB	Application Extension	8/9/2012 12:19 PM	A
pmrbrowse.dll	955 KB	Application Extension	8/9/2012 12:19 PM	A
pmrcnxmgr.dll	124 KB	Application Extension	8/9/2012 12:19 PM	A
pmregex_EN.res	3 KB	Compiled Resource ...	8/9/2012 12:19 PM	A
pmregex_IA.res	2 KB	Compiled Resource ...	8/9/2012 12:19 PM	A
pmregex_PT_BR.res	3 KB	Compiled Resource ...	8/9/2012 12:19 PM	A
pmregex_ZH.res	3 KB	Compiled Resource ...	8/9/2012 12:19 PM	A
pmregexpr.dll	22 KB	Application Extension	8/9/2012 12:19 PM	A
pmrelldr.dll	152 KB	Application Extension	8/9/2012 12:19 PM	A
pmrep.exe	656 KB	Application	8/9/2012 12:19 PM	A
pmrepageant.exe	163 KB	Application	8/9/2012 12:19 PM	A

```

C:\Informatica\9.0.1\server\bin>pmrep.exe

Informatica(r) PMREP, version [9.0.1 HotFix2], build [242.1111], Windows 32-bit
Copyright (c) Informatica Corporation 1994 - 2010
All Rights Reserved.
This Software is protected by U.S. Patent Numbers 5,794,246; 6,014,670; 6,016,501; 6,029,178; 6,032,158; 6,035,307; 6,044,374; 6,092,086; 6,208,990; 6,339,775; 6,640,226; 6,789,096; 6,820,077; 6,823,373; 6,850,947; 6,895,471; 7,117,215; 7,162,643; 7,254,590; 7,281,001; 7,421,458; and 7,584,422, international Patents and other Patents Pending.

Invoked at Tue May 07 14:32:55 2013

pmrep>

```

Step-2 Now connect to repository with domain.

Syntax :-

Connect -r Repository name -d Domain Name -n Username -x Password.

```

C:\Informatica\9.0.1>cd server
C:\Informatica\9.0.1\server>cd bin
C:\Informatica\9.0.1\server\bin>PMREP

Informatica(r) PMREP, version [9.0.1 HotFix2], build [242.1111], Windows 32-bit
Copyright (c) Informatica Corporation 1994 - 2010
All Rights Reserved.
This Software is protected by U.S. Patent Numbers 5,794,246; 6,014,670; 6,016,501; 6,029,178; 6,032,158; 6,035,307; 6,044,374; 6,092,086; 6,208,990; 6,339,775; 6,640,226; 6,789,096; 6,820,077; 6,823,373; 6,850,947; 6,895,471; 7,117,215; 7,162,643; 7,254,590; 7,281,001; 7,421,458; and 7,584,422, international Patents and other Patents Pending.

Invoked at Thu May 09 10:09:15 2013

pmrep>connect -r Inforeposuser -d Domain_Mitesha -n infouser -x password
Connected to repository Inforeposuser in Domain_mitesha as user infouser
connect completed successfully.
pmrep>

```

Step-3 Show connection information.

Syntax :-

Connect -showconnectioninfo

```
CA Command Prompt - PMREP
pmrep>showconnectioninfo
Connected to repository inforeposuser in Domain_mitesha as user infouser
showconnectioninfo completed successfully.
pmrep>
```

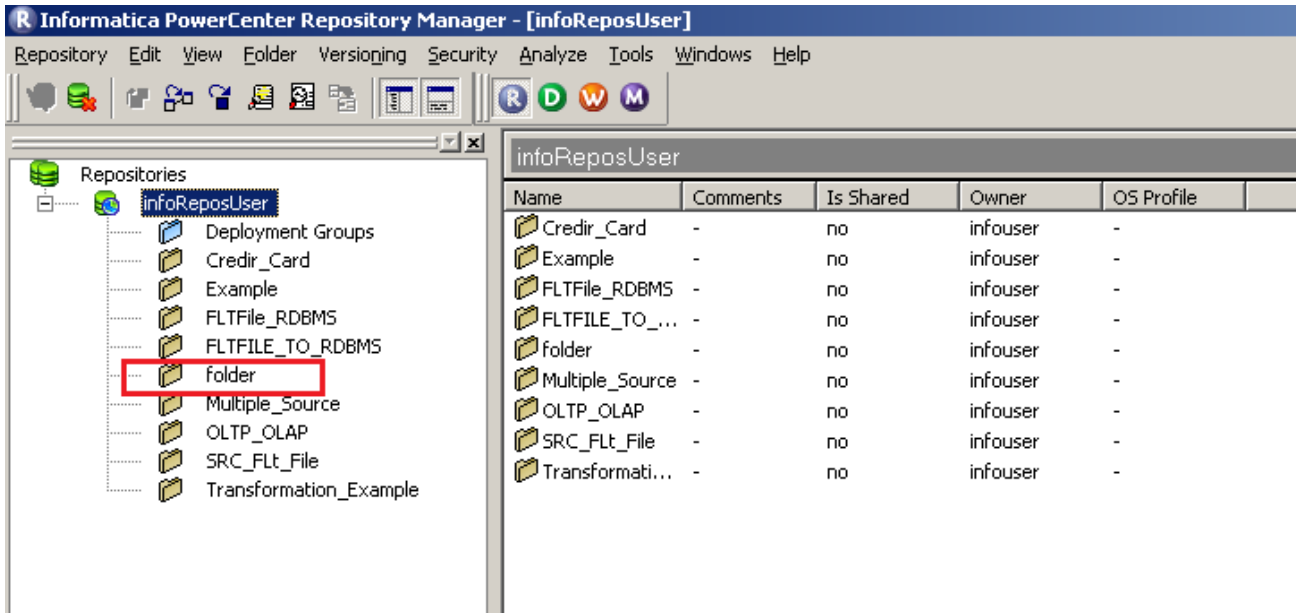
Step 4 Show Workflow list of objects in Transformation Example folder.

Syntax :-

listobjects -o workflow -f Folder Name.

```
CA Command Prompt - PMREP
workflow wf_Filter_Transformation
workflow wf1_Expression
workflow wf_Aggregation
.listobjects completed successfully.
pmrep>listobjects -o workflow -f Transformation_Example
workflow Filter_Transformation
workflow Filter
workflow Expression
workflow RankTransformation
workflow Trg_CreditCard
workflow Filter_Transform
workflow SRC_SIG_Filter_Transform
workflow wf_SRC_SIG_Filter_Transform
workflow wf_Rank_Transformatio
workflow wf_Rank_Transformation_Example
workflow Aggregation
workflow agg_Aggregation
workflow Map
workflow Store_Procedure
workflow SP
workflow Store_Procedure_Transformation
workflow Unique_Duplicate_Record
workflow Unique_Duplicate
workflow wf_Load_Unique_Duplicate_Records
workflow Unique_Duplicate_r
workflow wf_U_D_Unique_and_Duplicate_Records
workflow Unique_Records
workflow Load_Only_Unique_Records
workflow Convert_Row_inot_Column
workflow Mapplet_Example
workflow wf_Row_into_Column
workflow wf_Using_Mapplet_Unique_Duplicate_Data_Store
workflow wf_Convert_Row_Value_into_Column
workflow wf_Con_Row_into_Column
workflow wf_Convert_Row_into_Col
workflow wf_Row_to_Column_Conversion
workflow wf_Unconnected_Lookup_Transformation
workflow Lookup_Transformation
workflow wf1_Unconnected_Lookup_Transformation
workflow wf_Dynamic_Lookup_Transformation_with_resuable_task
workflow wf_Lookup_Transformation
.listobjects completed successfully.
pmrep>
```


Step-7 Now you can check your created folder into the Repository.

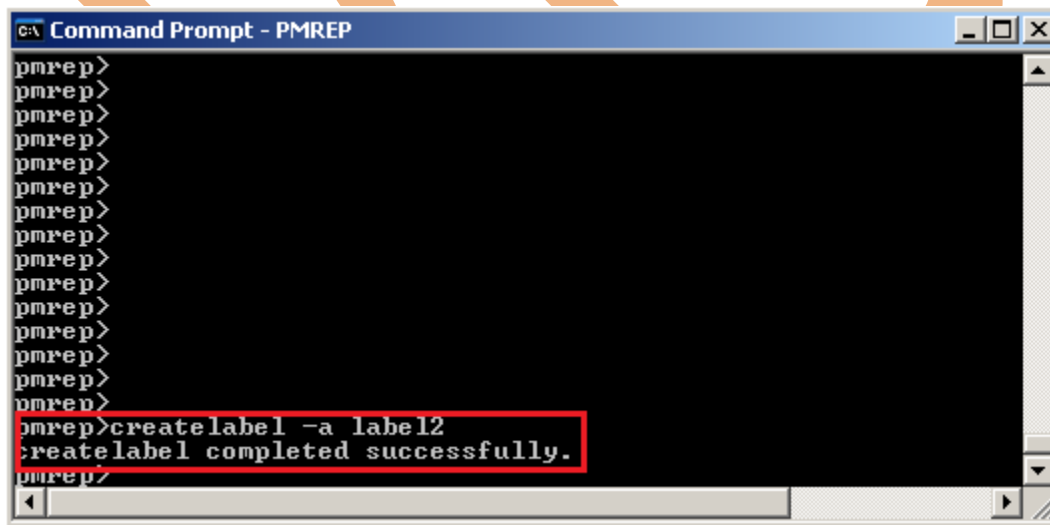


You can also delete folder or modify folder using **deleterfolder** or **modifyfolder** command in **PMREP**.

Step-8 Create Label using PMREP Command.

Syntax :-

Connect -createlabel -a



Step-11 Create Backup file using PMREP Command in Informatica.

Syntax :-

backup -o filename.rep

```
C:\Informatica\9.0.1\server\bin\pmrep.exe
Invoked at Tue May 21 16:59:27 2013
pmrep>backup -o map.rep
Back Up Contents operation on repository [infoReposUser] started at 05/21/2013 16:59:52.
Backing up repository contents to file [C:\Informatica\9.0.1\server\infa_shared\Backup\map.rep].
Backing up table OPB_SUBJECT
Backing up table OPB_DBD
Backing up table OPB_SCHEMA
Backing up table OPB_TARGINDEX
Backing up table OPB_TARGINDEXFLD
Backing up table OPB_PICDSC
Backing up table OPB_SRC_FLD
Backing up table OPB_SRC
Backing up table OPB_TARG_FLD
Backing up table OPB_TARG
Backing up table OPB_SELINFO
Backing up table OPB_RTSEQ
Backing up table OPB_KEYWORD
Backing up table OPB_MAPPING
Backing up table OPB_DBDS
Backing up table OPB_TDS
Backing up table OPB_WIDGET_DEP
Backing up table OPB_WIDGET
Backing up table OPB_WIDGET_EXPR
Backing up table OPB_EXPRESSION
Backing up table OPB_WIDGET_INST
Backing up table OPB_MAP_TARG_INFO
Backing up table OPB_WIDGET_FIELD
Backing up table OPB_MAP_OPTIONS
Backing up table OPB_WIDGET_ATTR
Backing up table OPB_SHORTCUT
Backing up table OPB_NORM_FLD
Backing up table OPB_SERVER_INFO
Backing up table OPB_ANALYZE_DEP
Backing up table OPB_USERS
Backing up table OPB_GROUPS
Backing up table OPB_USER_GROUPS
Backing up table OPB_TARG_FLD_EXPR
Backing up table OPB_TARG_TBL_EXPR
Backing up table OPB_MD_CUBE
Backing up table OPB_MD_DIMENSION
Backing up table OPB_MD_LEVEL
Backing up table OPB_MD_LEVEL_FIELD
Backing up table OPB_MD_HIERARCHY
Backing up table OPB_MD_LVL_HRCHY
Backing up table OPB_MD_FACT
Backing up table OPB_MD_CUBE_FIELD
Backing up table OPB_MD_FACT_LEVEL
Backing up table OPB_MD_CUBE_HRCHY
```



