



## **Informatica Power Center 9.0.1**

### **How to Series - Loading First 'N' Records**

#### **Description:**

BISP is committed to provide BEST learning material to the beginners and advance learners. We have prepared the list of “How To” series in Informatica. The document shows how to load first ‘N’ record from the source to target. **Join our professional training program and learn from experts.**

#### **History:**

<b>Version</b>	<b>Description Change</b>	<b>Author</b>	<b>Publish Date</b>
0.1	Initial Draft	Upendra Upadhyay	12th Aug 2011
0.1	Review#1	Amit Sharma	17 <sup>th</sup> Aug 2011

## TABLE OF CONTENTS

<b>S.NO</b>	<b>TITLE</b>	<b>PAGE. NO.</b>
<b>1</b>	<a href="#">Introduction.</a>	<b>3</b>
<b>2</b>	<a href="#">Creating Repository &amp; Folder.</a>	<b>4-7</b>
<b>3</b>	<a href="#">Import Source and Target System Tables.</a>	<b>8-15</b>
<b>4</b>	<a href="#">Create Mapping and Fetch First N Records.</a>	<b>16-18</b>
<b>5</b>	<a href="#">Create Workflow.</a>	<b>19-24</b>
<b>6</b>	<a href="#">Workflow Monitor &amp; Review data.</a>	<b>25-27</b>

# Introduction

## Load Top 3 Records in Target in Informatica.

In this example, Load only first 3 records in Target. There are following Step follow to load top 3 records in target.

- Create Repository and Folder in Informatica Repository Manager.
- Import Source Database and Target Table (Create Target Table Manually or Import from Database)
- Create Mapping and write SQL Query for load top 3 records in Target in Source Qualifier Transformation.
- Create Workflow and Specify connection for Source and Target.
- Execute Workflow and Check execution in Informatica Workflow Monitor and then Preview Data in Target.

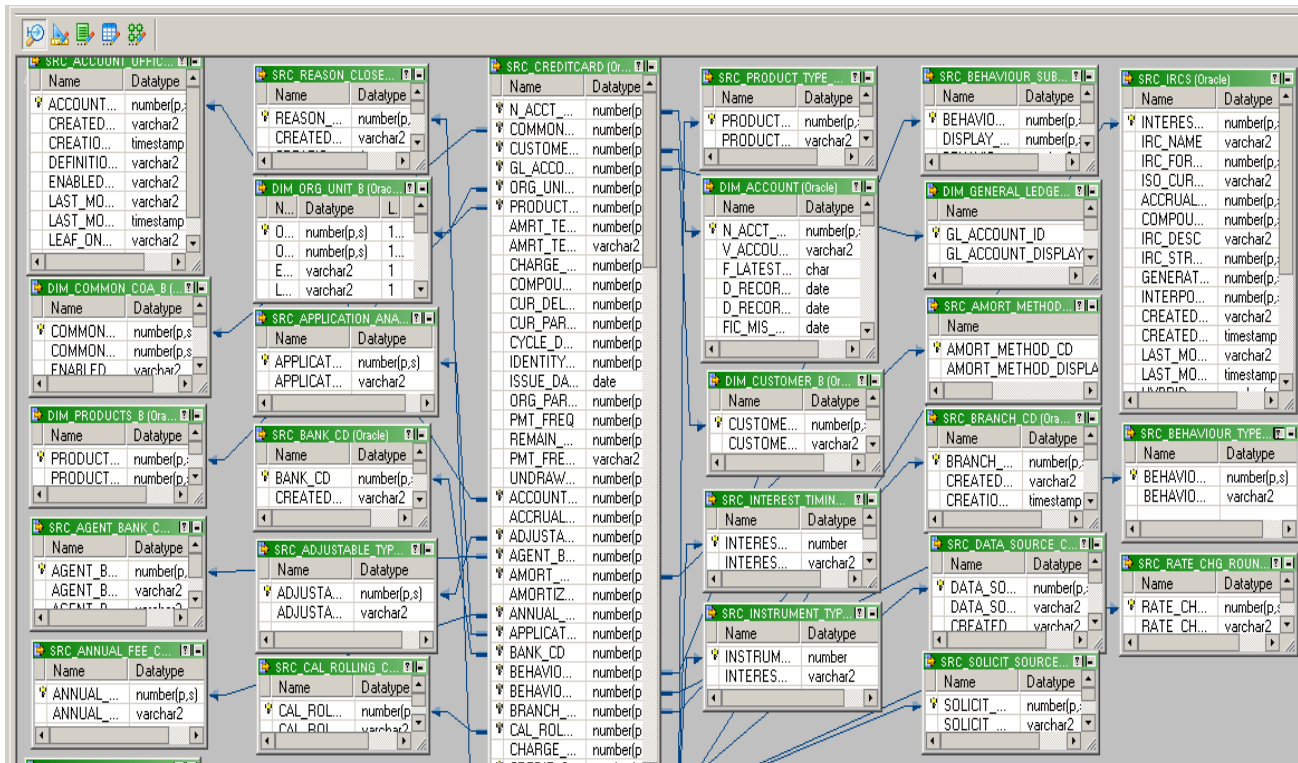
### Description :

Load first 3 Records from SRC\_Creditcard Table into TRG\_Credit Table. Both table in RDBMS(Oracle 11g). And use this query for load top 3 Records in Target.

**Select \* from table name where rownum <=3;**

Write this query in SQL Query tab in Source Qualifier Transformation and then save this mapping and then execute.

# Source Data Model



# Target Table

Target Designer

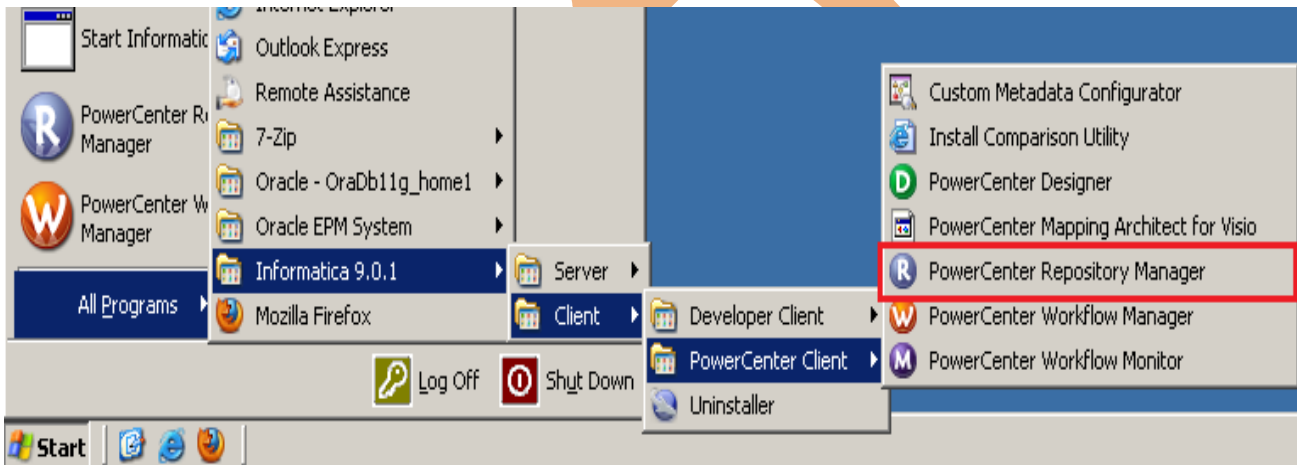
TRG\_CREDIT (Oracle)

K.	Name	Datatype
	N_ACCT_SKEY	number(p,s)
	COMMON_COA...	number(p,s)
	CUSTOMER_ID	number(p,s)
	GL_ACCOUNT...	number(p,s)
	ORG_UNIT_ID	number(p,s)
	PRODUCT_ID	number(p,s)
	AMRT_TERM	number(p,s)
	AMRT_TERM...	varchar2
	CHARGE_OFF...	number(p,s)
	COMPOUND_B...	number(p,s)
	CUR_DELQ_BAL	number(p,s)
	CUR_PAR_BAL	number(p,s)
	CYCLE_DAY_O...	number(p,s)
	IDENTITY_CODE	number(p,s)
	ISSUE_DATE	date
	ORG_PAR_BAL	number(p,s)
	PMT_FREQ	number(p,s)
	REMAIN_NO_P...	number(p,s)
	PMT_FREQ_M...	varchar2
	UNDRAWN_AMT	number(p,s)
	ACCOUNT_OFF...	number(p,s)
	ACCRUAL_BAS...	number(p,s)
	ADJUSTABLE...	number(p,s)

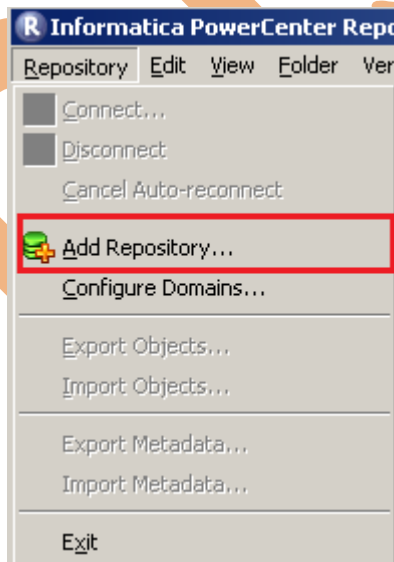
# Creating Repository and Folder

## Creating Repository & Connecting it.

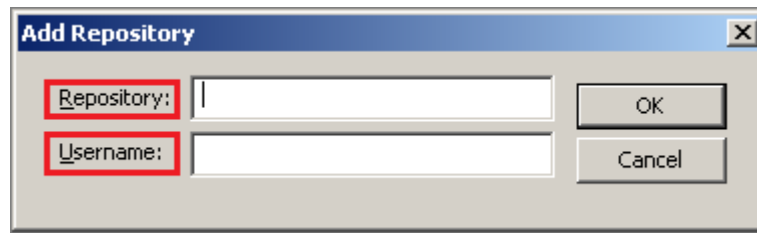
**Step-1** First create repository, Click on Start -> All Programs -> Informatica 9.0.1 -> Client -> Power Center Client -> Power Center Repository Manager.



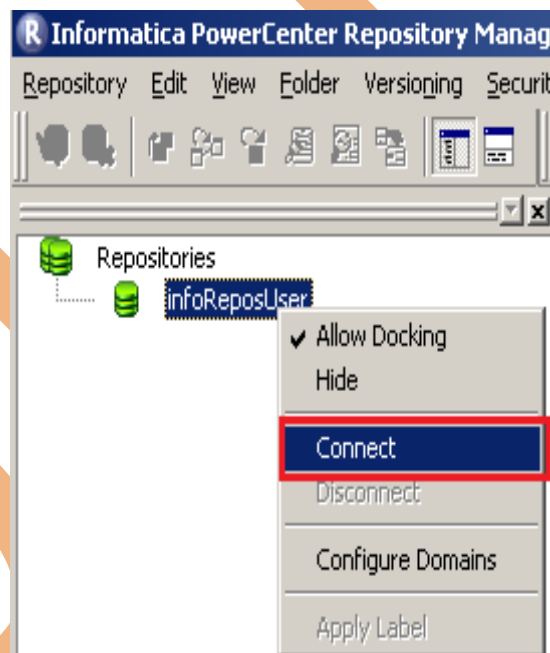
**Step-2** Then click on Repository Menu and click on Add Repository.



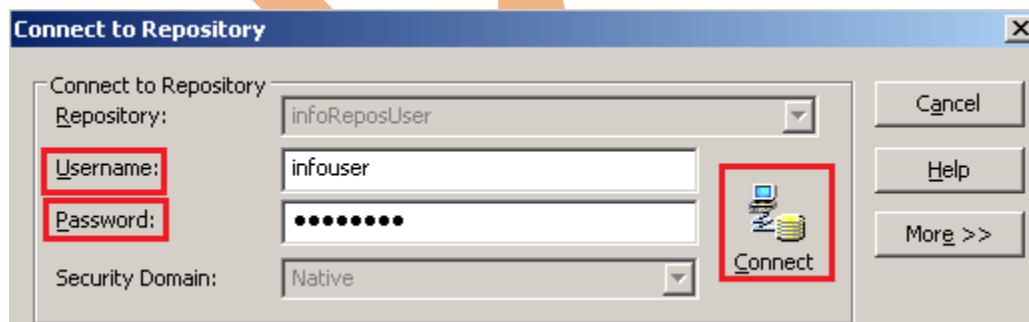
**Step-3** Give information like Repository Name and Username. Then click on ok button and repository created successfully.



**Step-4** Now connect repository. Right click on newly created repository and click on connect.



**Step-5** Give Username & password and click on Connect.

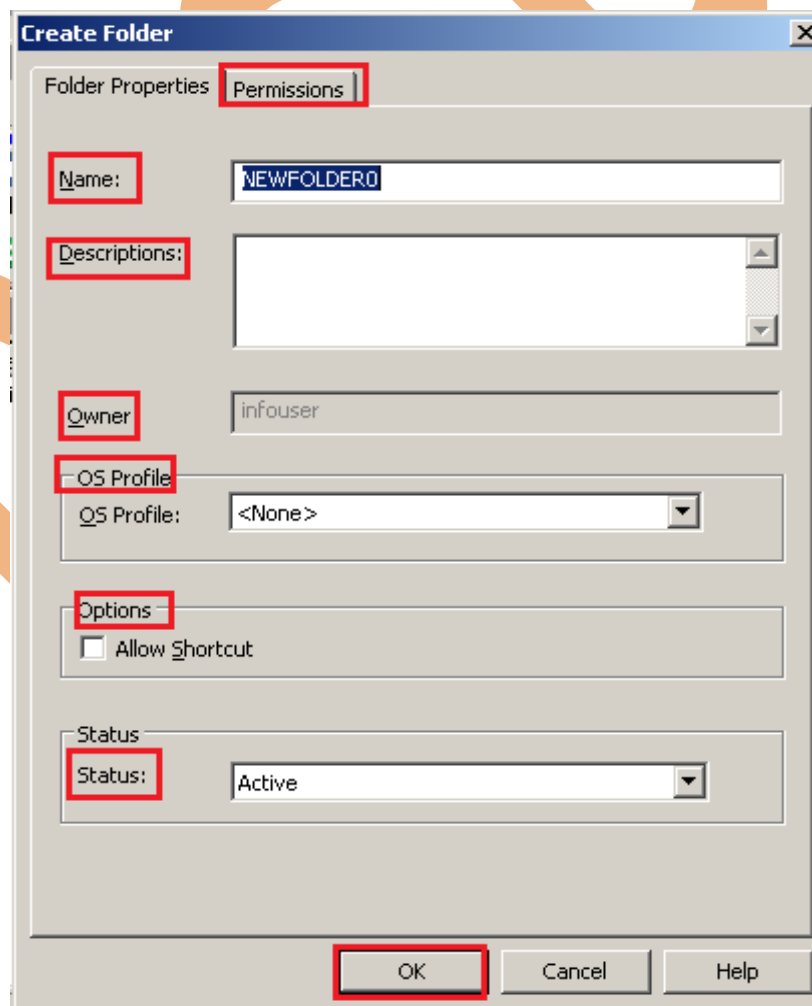


## Creating Folder.

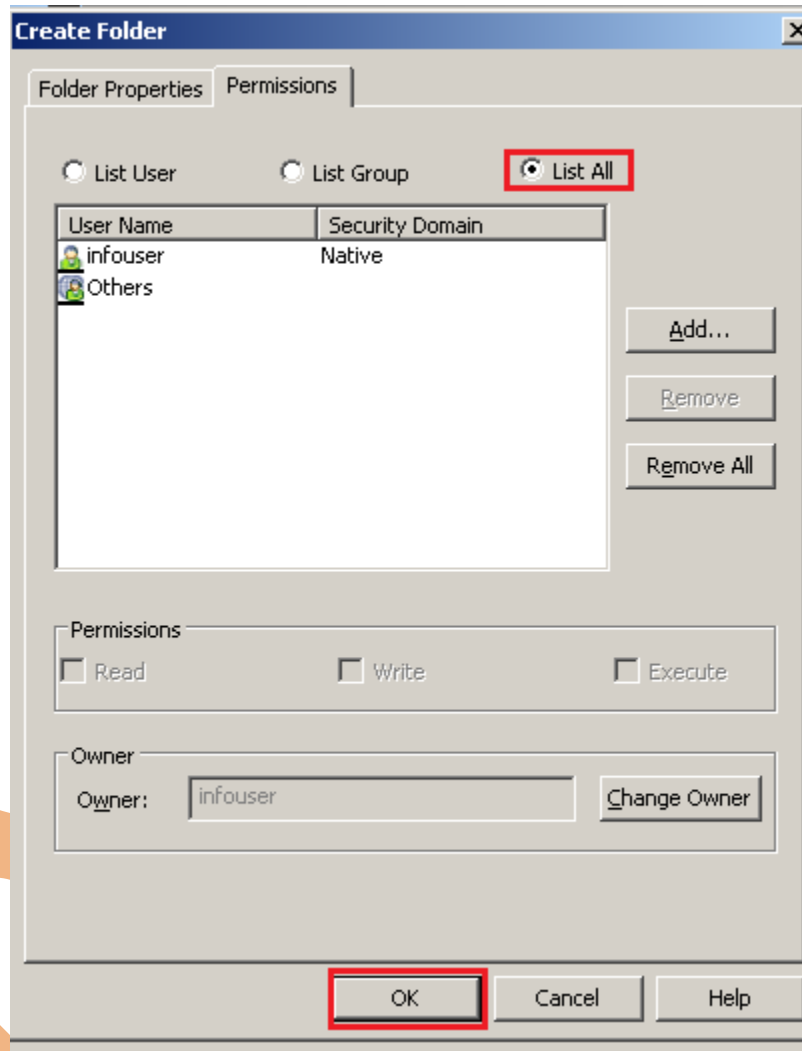
**Step-1** Go to Informatica Power Center Repository Manager and click on Folder Menu and click on Create.



**Step-2** Specify Name of Folder, Description, Owner, OS Profile, Options, Status and got to permissions tab.



**Step-3** This is permission tab to give permission for this folder.



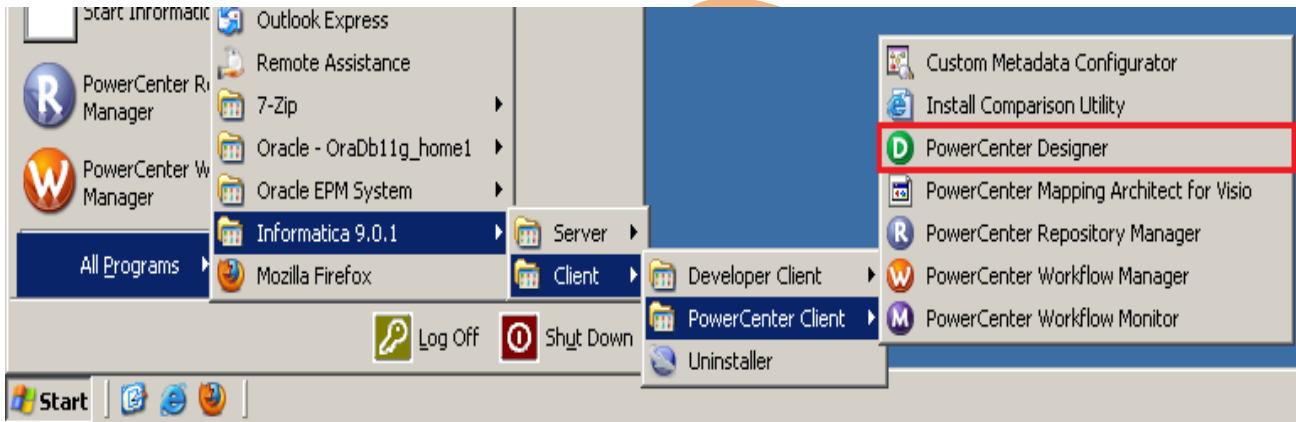
**Step-4** This is newly created Folder

Name	Comments	Is Shared	Owner	OS Profile
bispInfo	-	no	infouser	-
Transformation	-	no	infouser	-

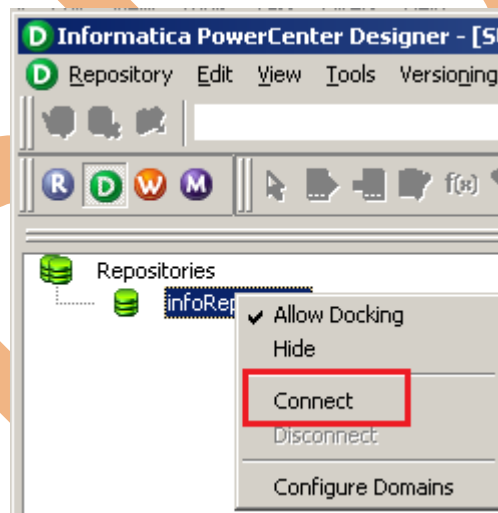


## Importing Source and Target Table

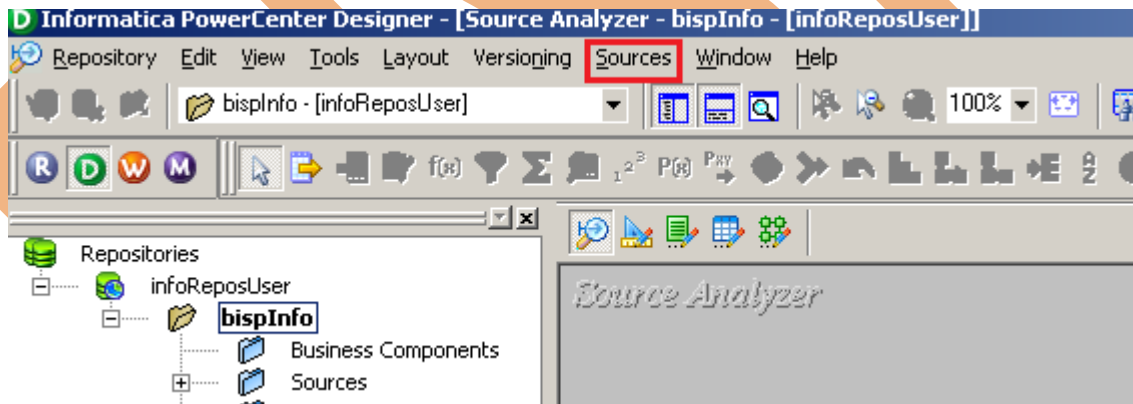
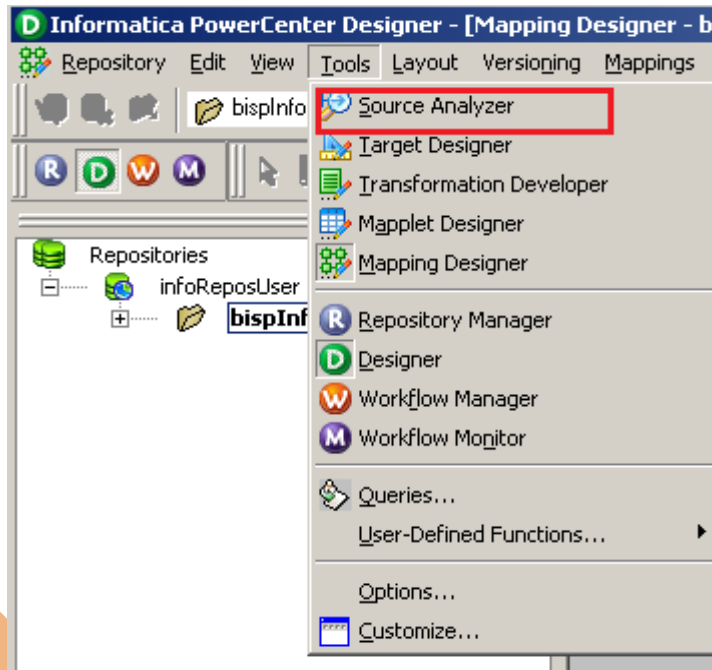
**Step-1** Click on Start -> All Programs -> Informatica 9.0.1 -> Client -> Power Center Client -> Power Center Designer..



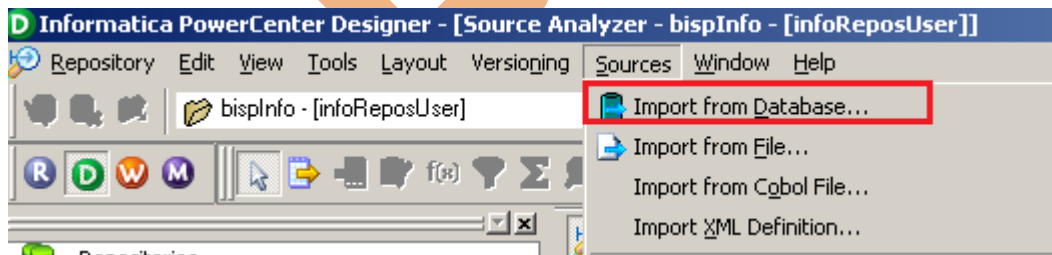
**Step-2** Then Connect to Repository in Informatica Power Center Designer Right click on repository name and click on Connect.



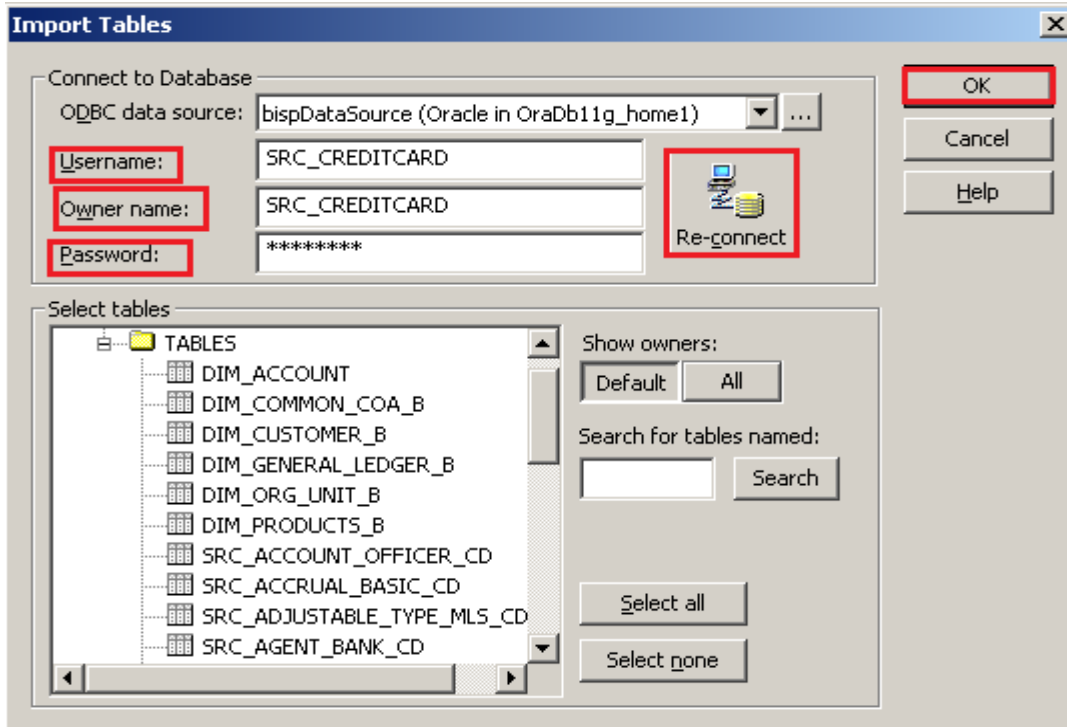
**Step-3** Go to Tools Menu and click on Source Analyzer to import source table. And then go to Sources Menu in Informatica Power Center Designer.

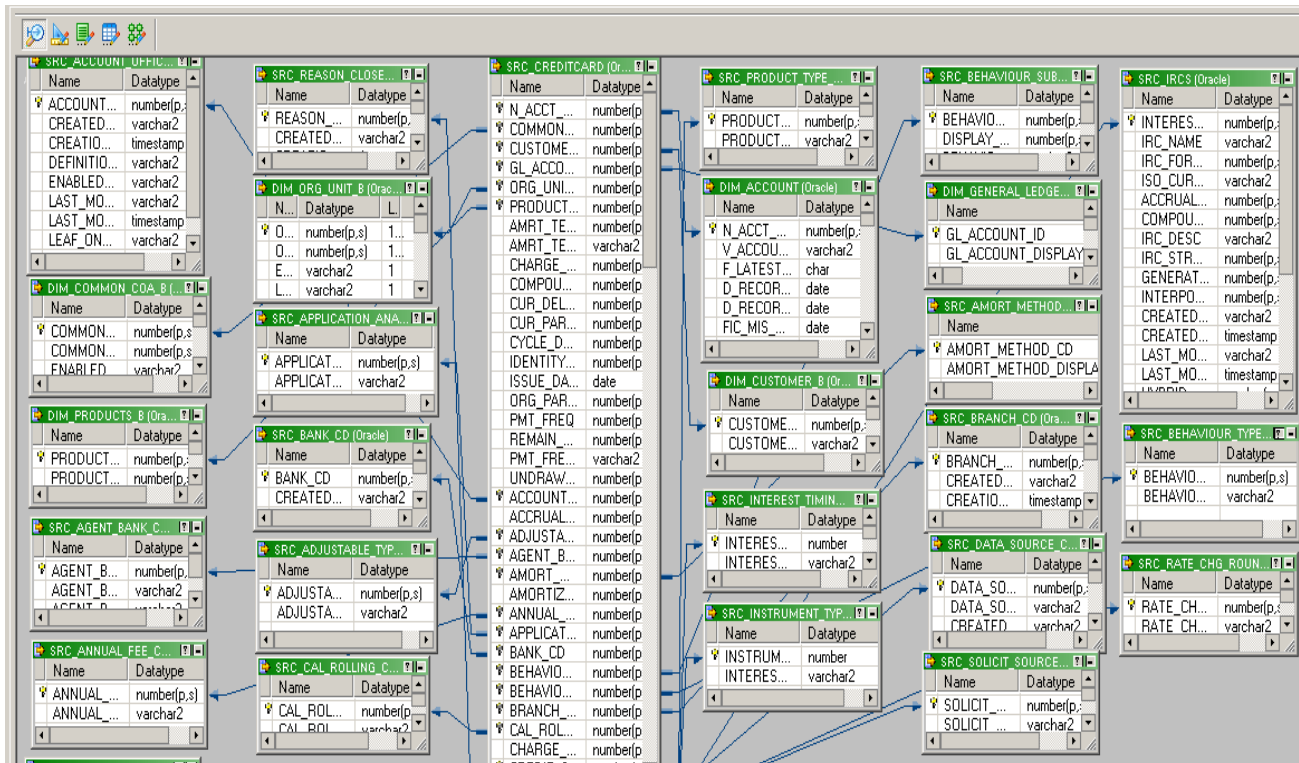


**Step-4** And then select Source menu and click on Import from database

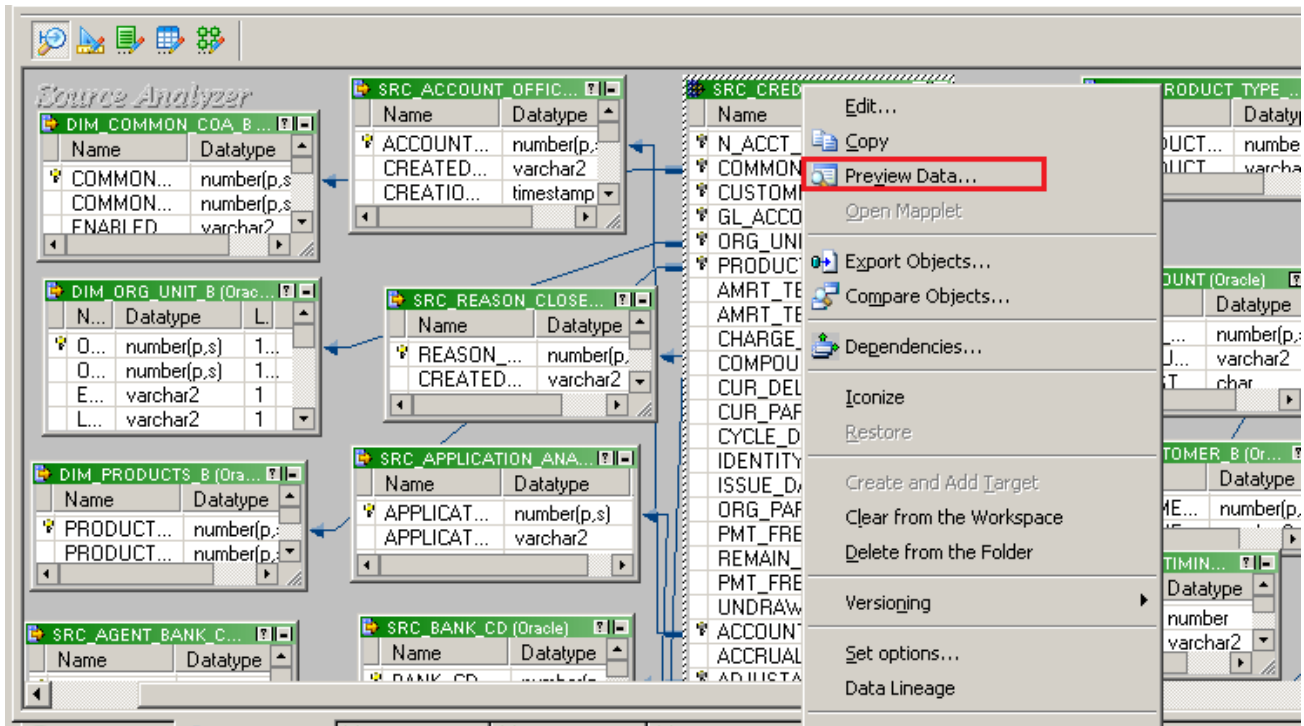


**Step-5** Specify Username, Owner name, password and then connect. Then select source table and click OK.

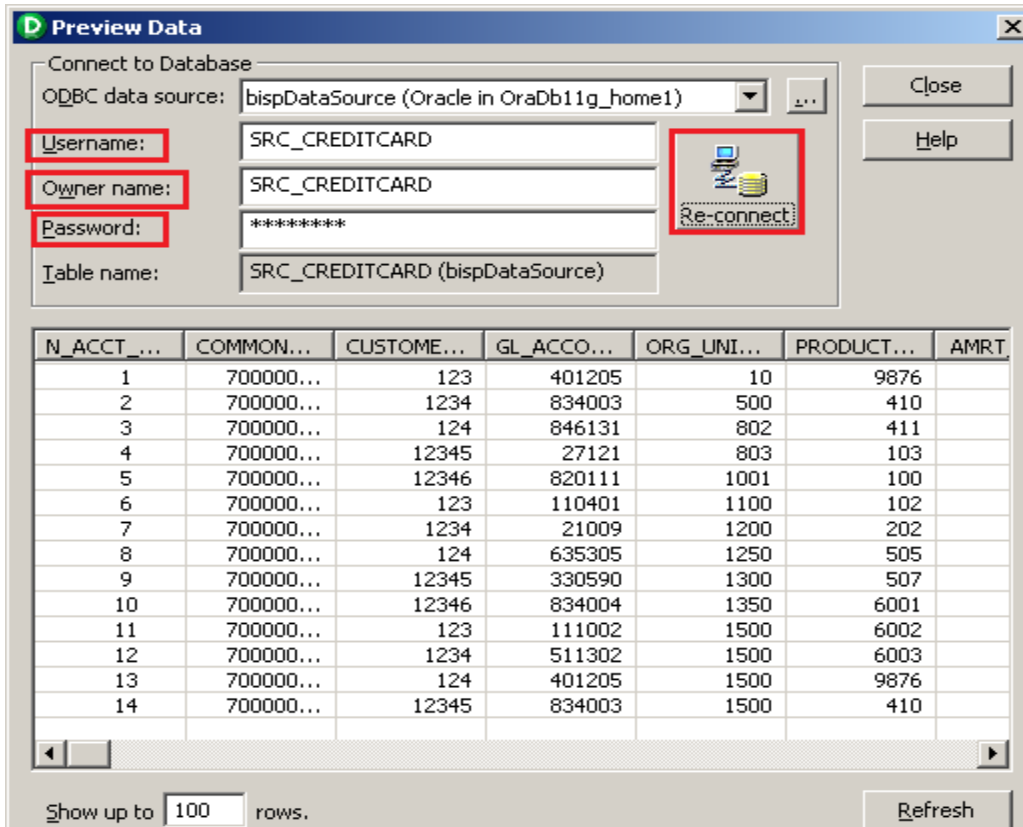




**Step-6** View data in source analyzer, Right click on SRC\_CREDITCARD and select Preview Data.

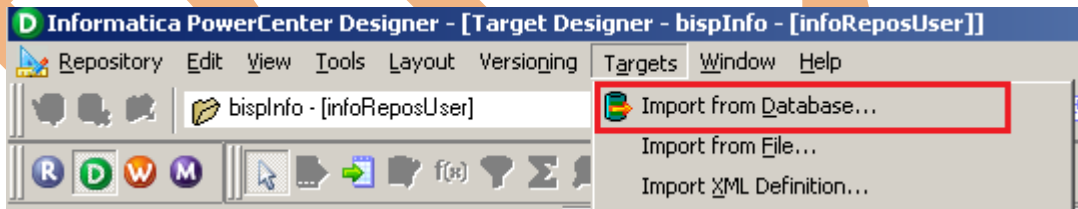


**Step-7** Specify Username and Password and connect it. Then Close it.

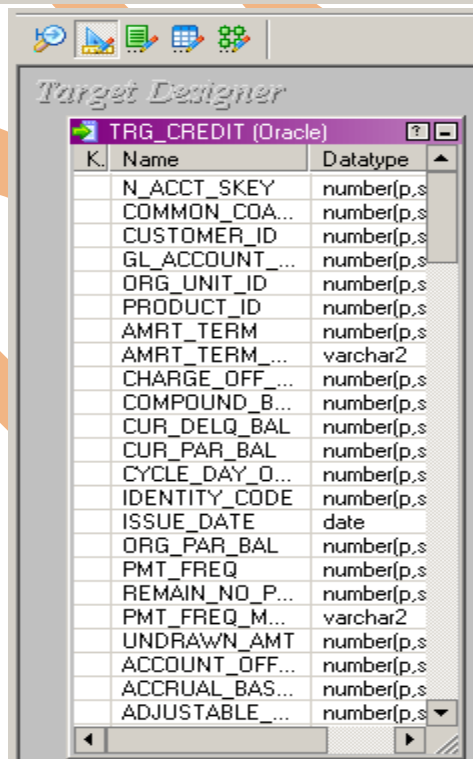
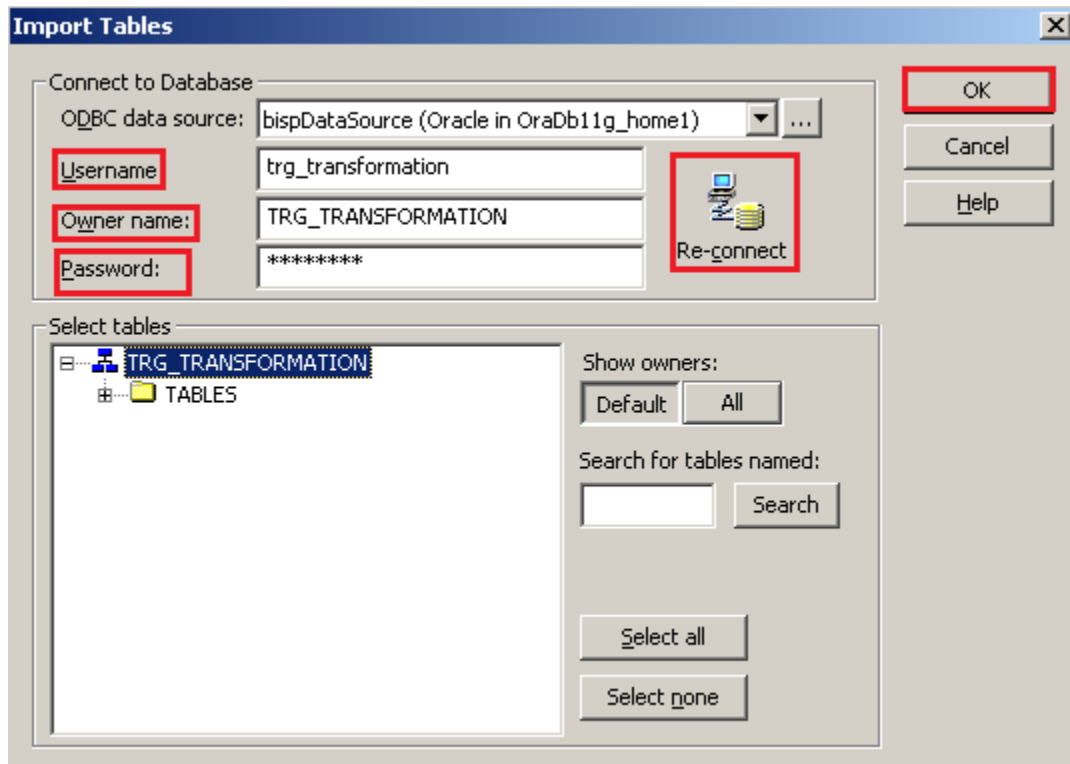


**Step-8** Now click on Target Designer.

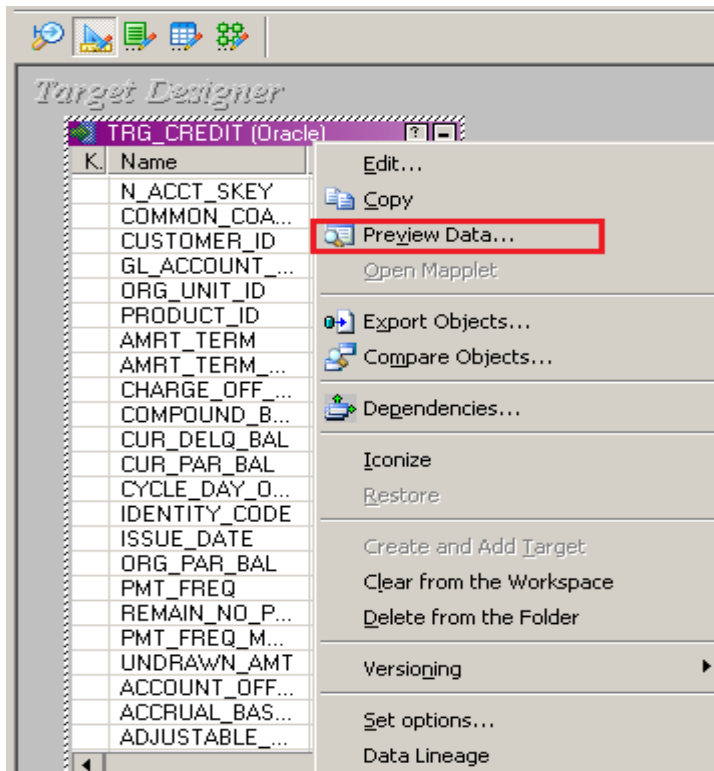
**Step-9** And then select Target menu and click on Import from database to import target table.



**Step-10** Specify Username, Owner name, password and then click on connect and then select table and then OK.




**Step-11** To view data select table and Right click on that table after that specify Username and Password and connect it. Then Close it.





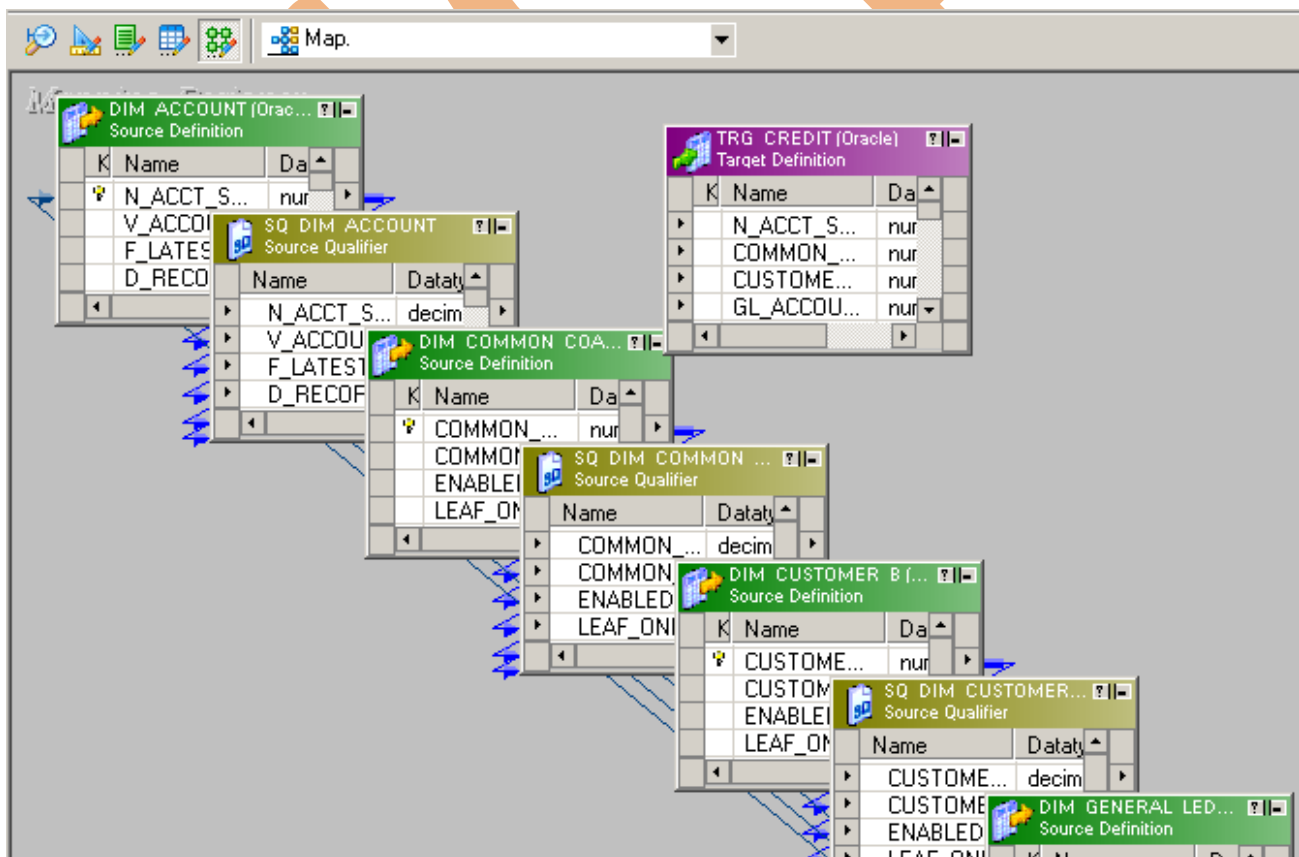


## CREATE MAPPING AND APPLY LOGIC TO FETCH FIRST N RECORD

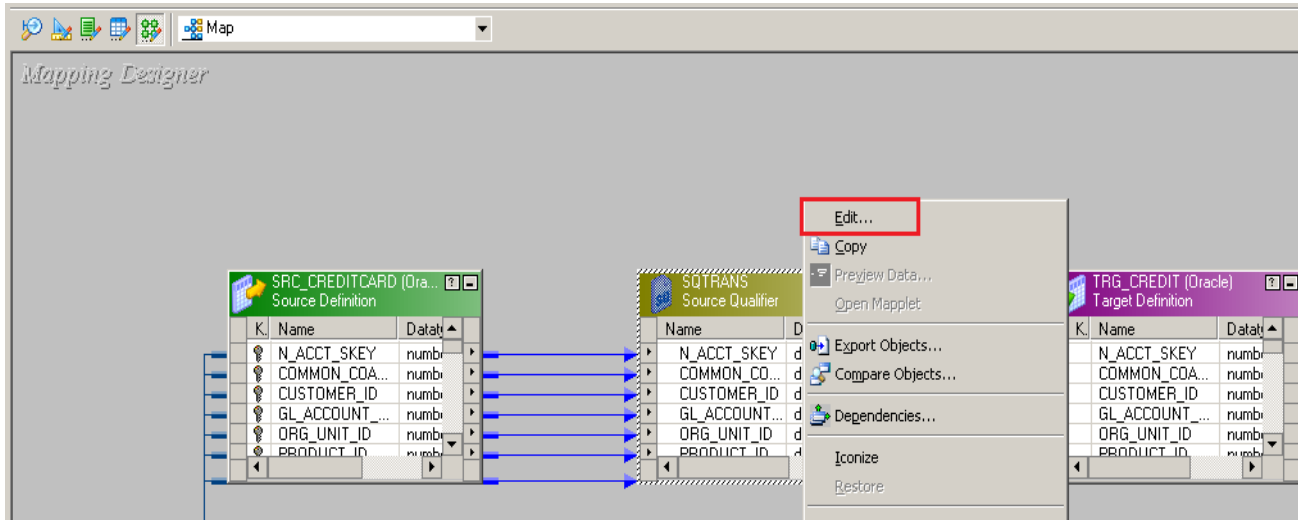
**Step-1** Go to Mapping Designer  and Create New Mapping and then name of mapping and click OK.



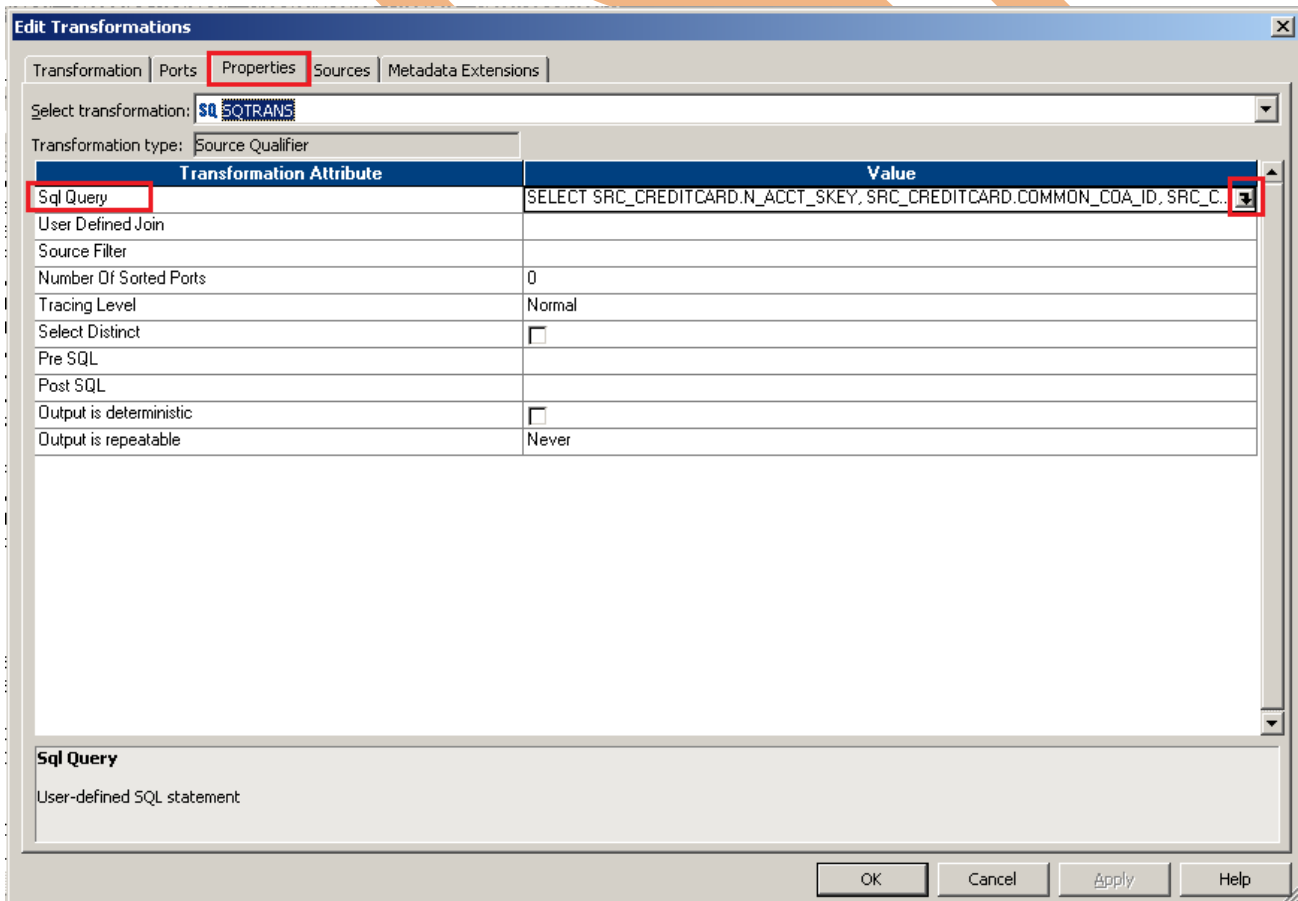
**Step-2** Then drag and drop source and target data in Mapping Designer.



**Step-3** Then right click on Source Qualifier and select Edit.

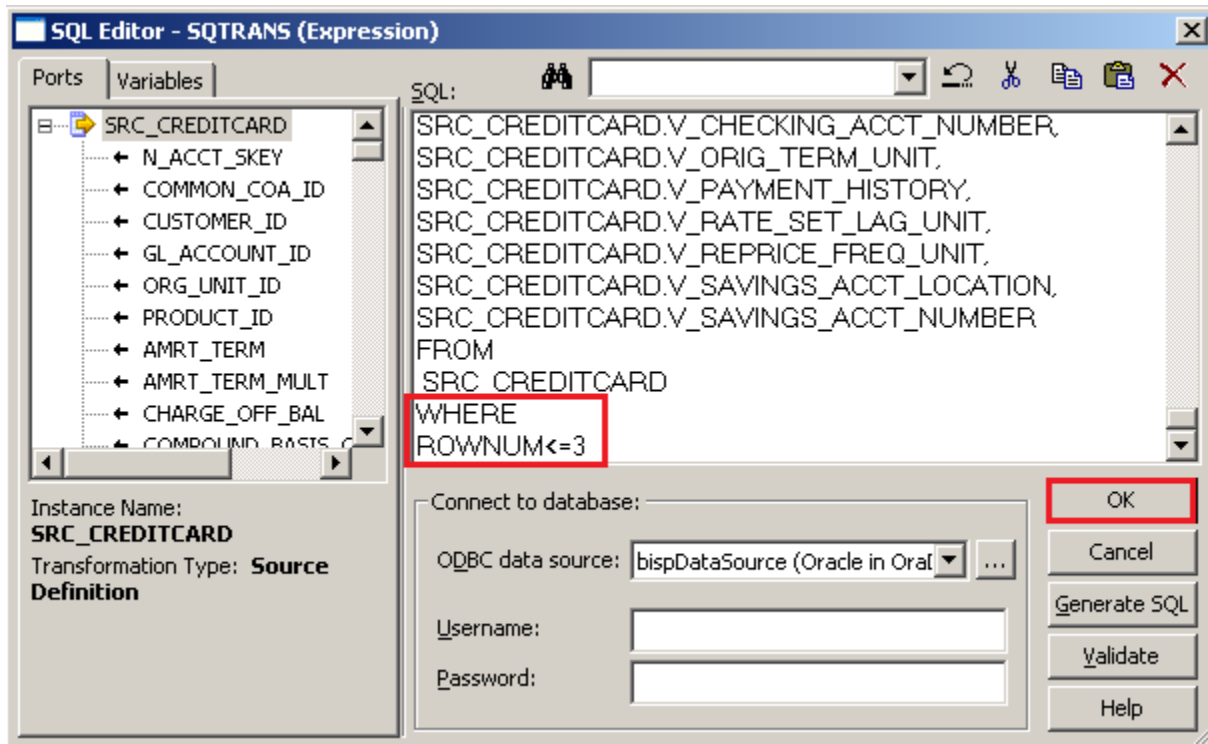


**Step-4** Go to Properties tab and write Query in SQL Query..

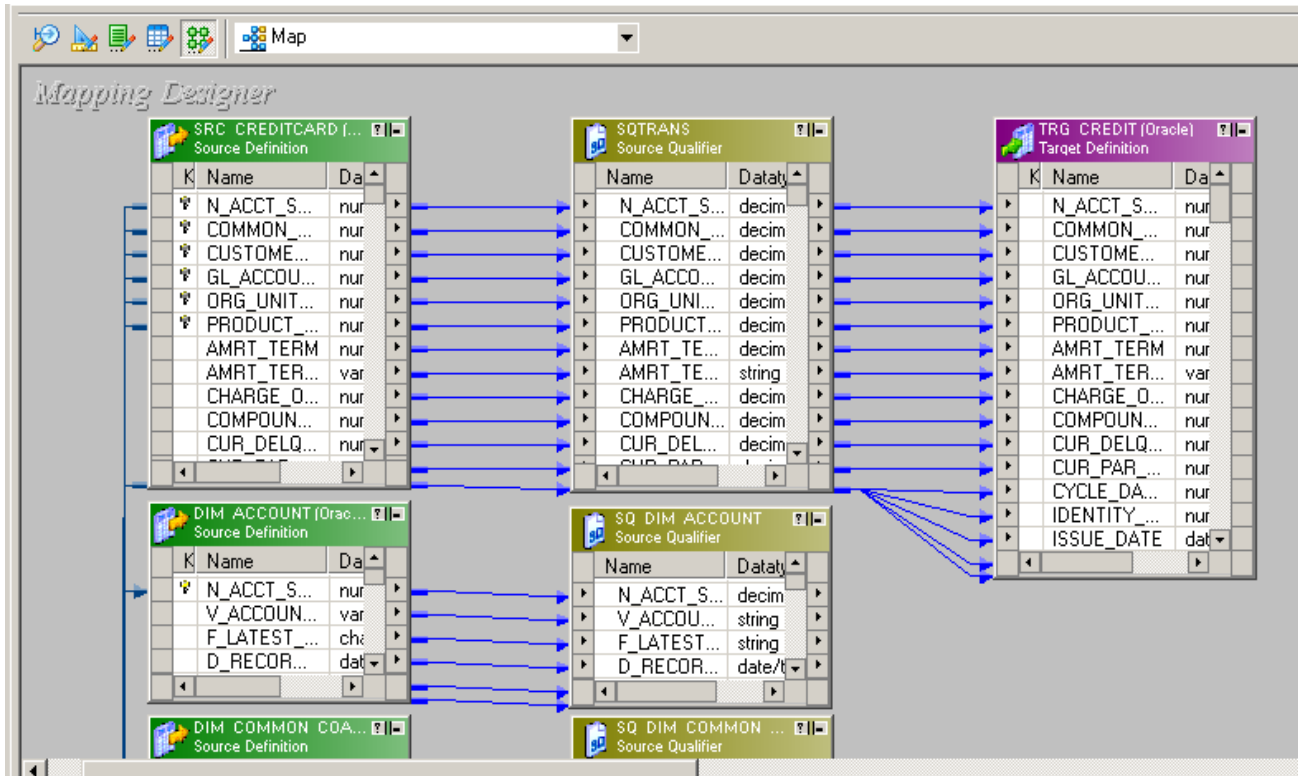


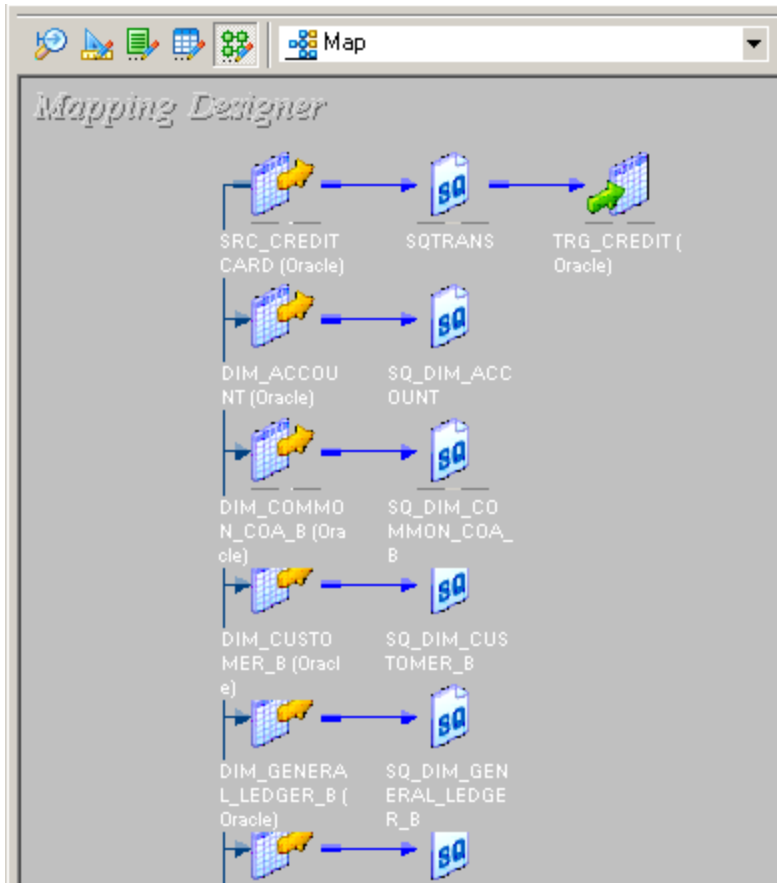
BSP

**Step-4** Write query in Expression Editor and click OK.



**Step-5** Create Mapping.





**Step-6** And then save it (ctrl+s) and check mapping is VALID.

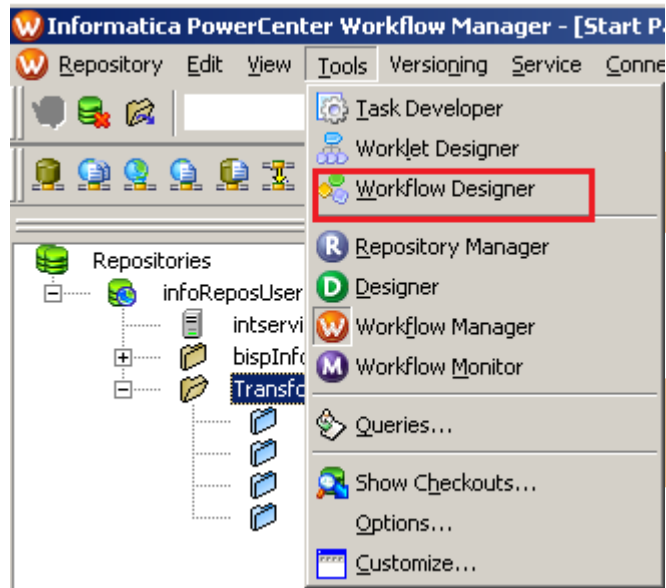
12/03/2012 13:39:23 \*\*\* Saving... Repository infoReposUser, Folder Transformation\_Example

Validating transformations of mapping Map...  
 ...transformation validation completed with no errors.  
 Validating data flow of mapping Map...  
 ...data flow validation completed with no errors.  
 Parsing mapping Map...  
 ...parsing completed with no errors.

\*\*\*\*\* Mapping Map is VALID \*\*\*\*\*  
 mapping Map updated.

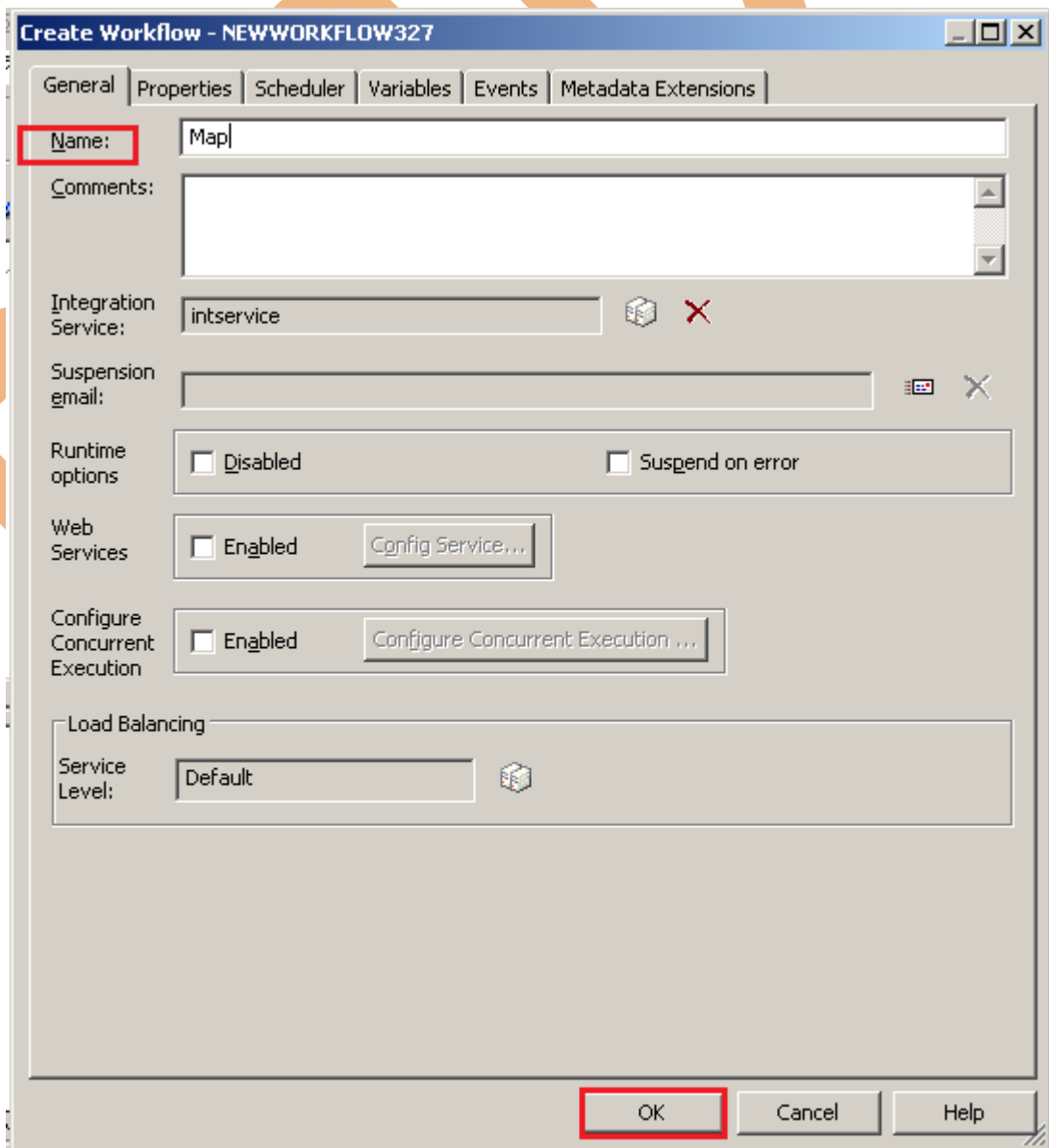
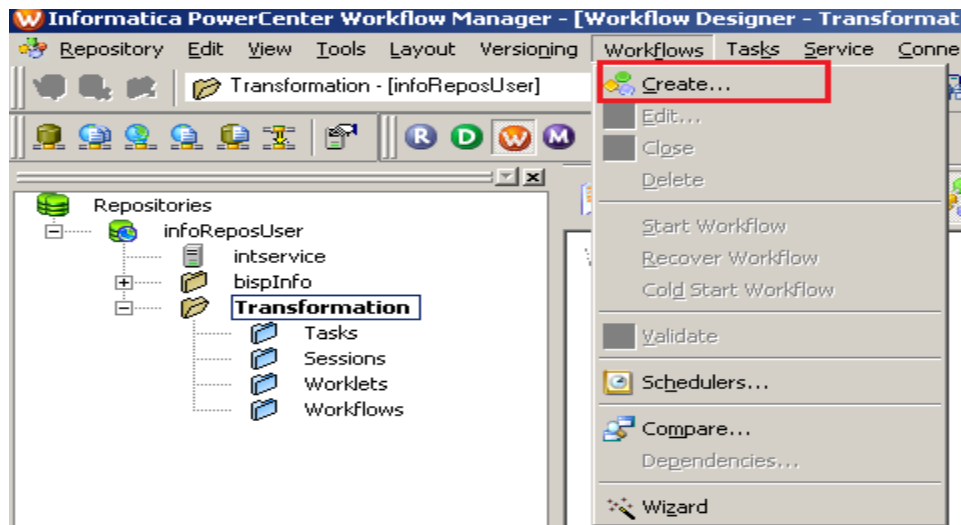
## CREATE WORKFLOW

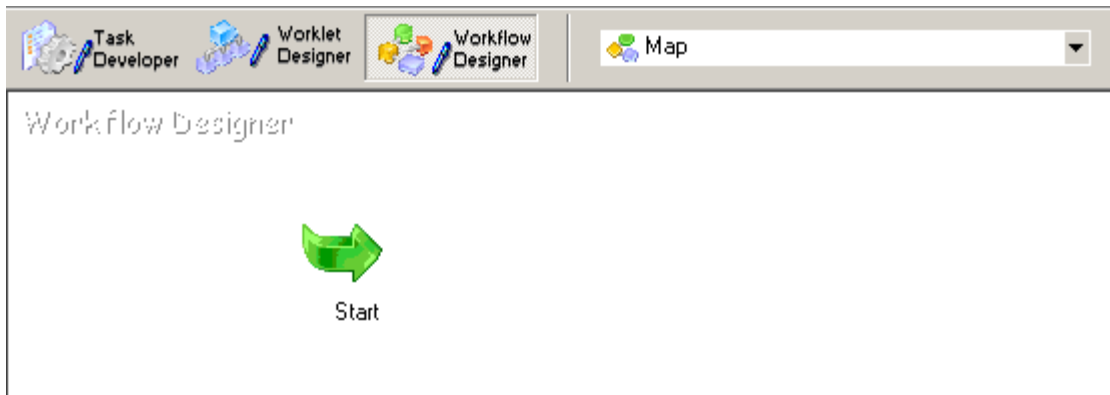
**Step-1** Now go to Informatica Power Center Workflow Manager, and go to Tools menu and select Workflow Designer.



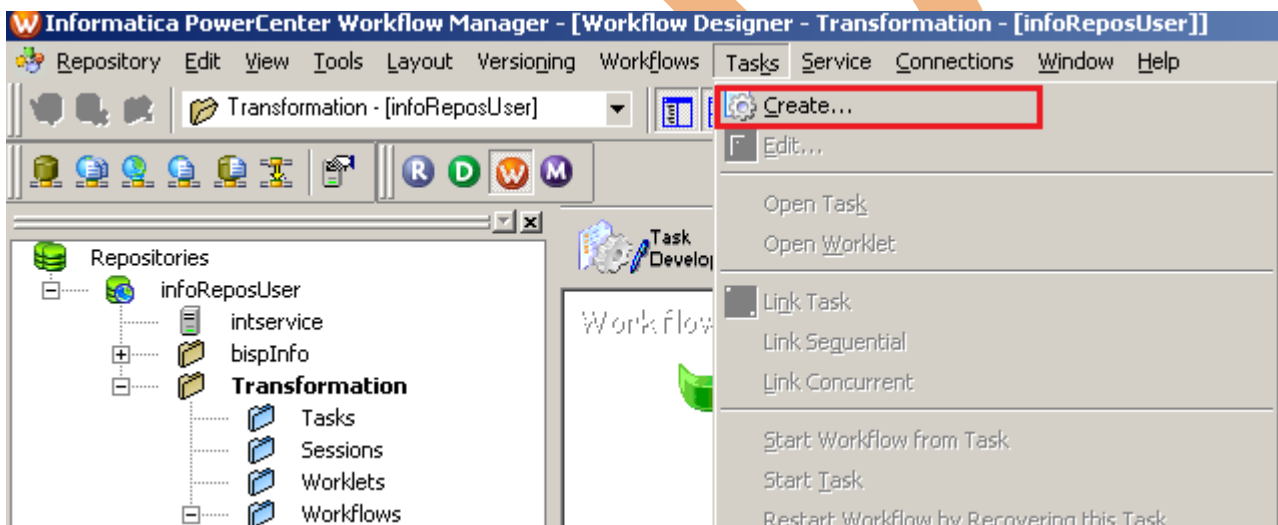
**Step-2** Now to create workflows, Go to Workflows menu and select Create. After that Name of workflow and click OK buttons.



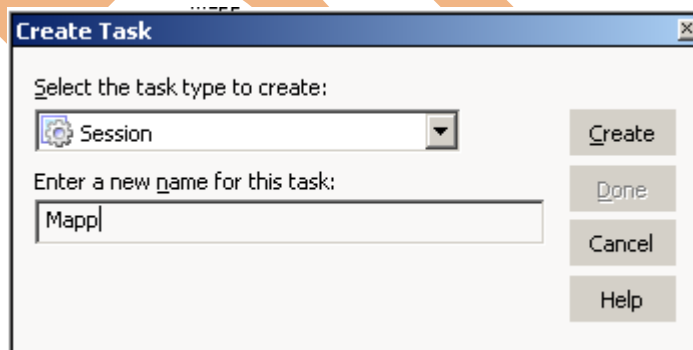




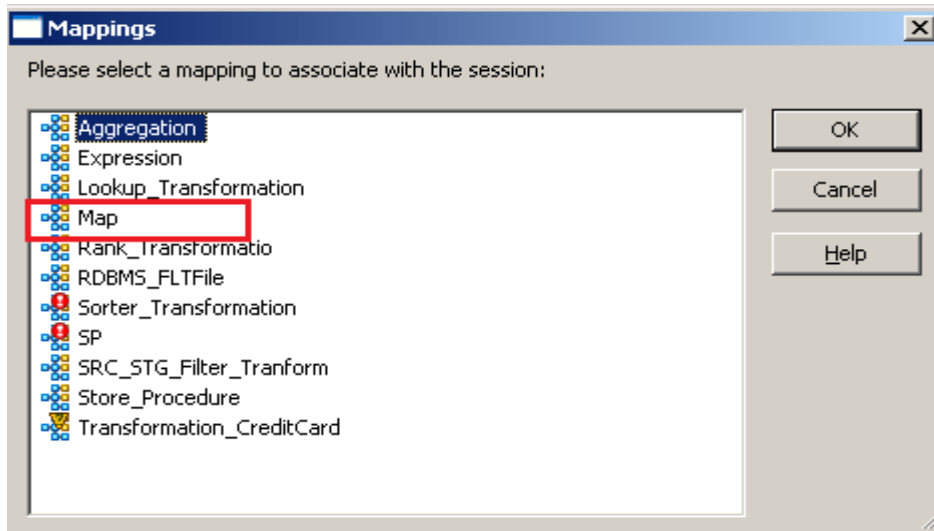
**Step-3** Now create Task, Go to Tasks Menu and click Create.



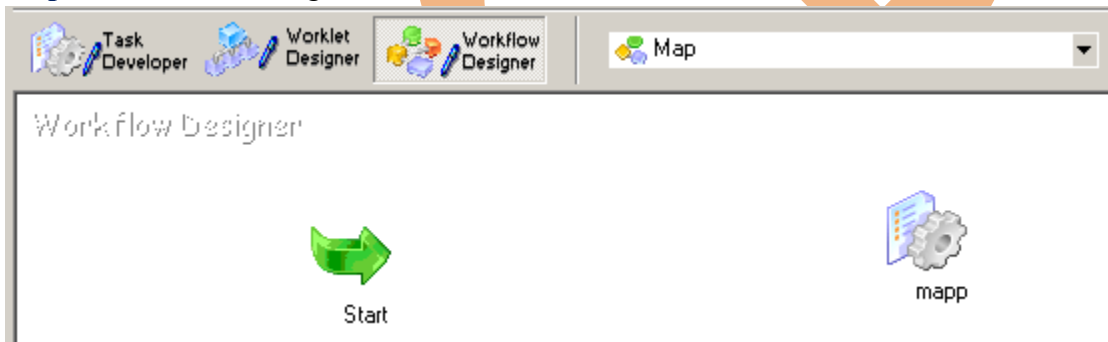
**Step-4** Now select session and insert Name of task.



**Step-5** Select Mapping to associate with the session.



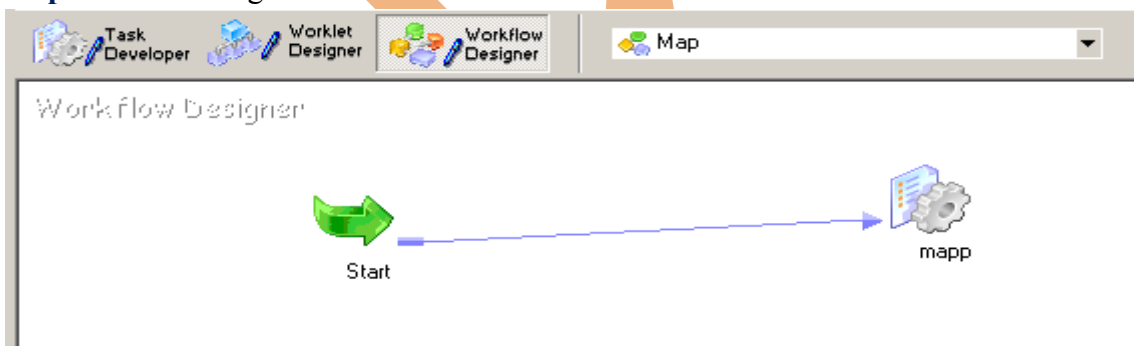
**Step-6** Workflow Designer Window.



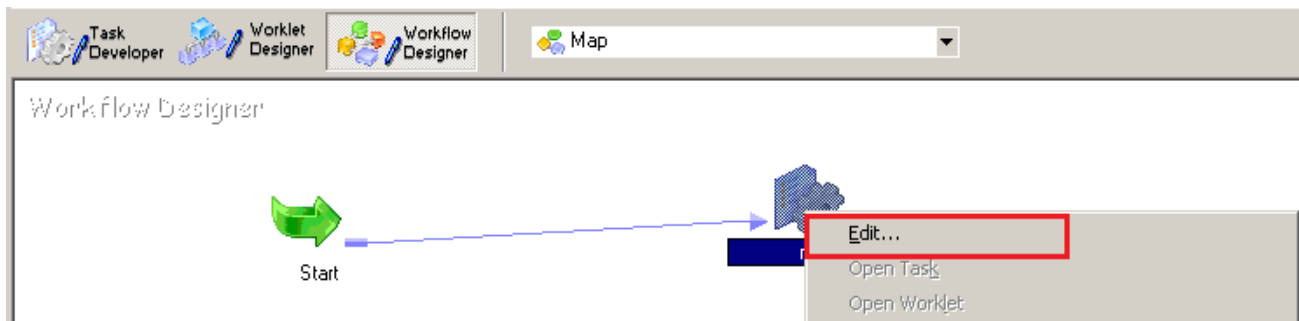
**Step-7** Now create flow B/W Workflow to Task. Select Line Task and link to Start to Filter.



**Step-8** Work Designer Windows

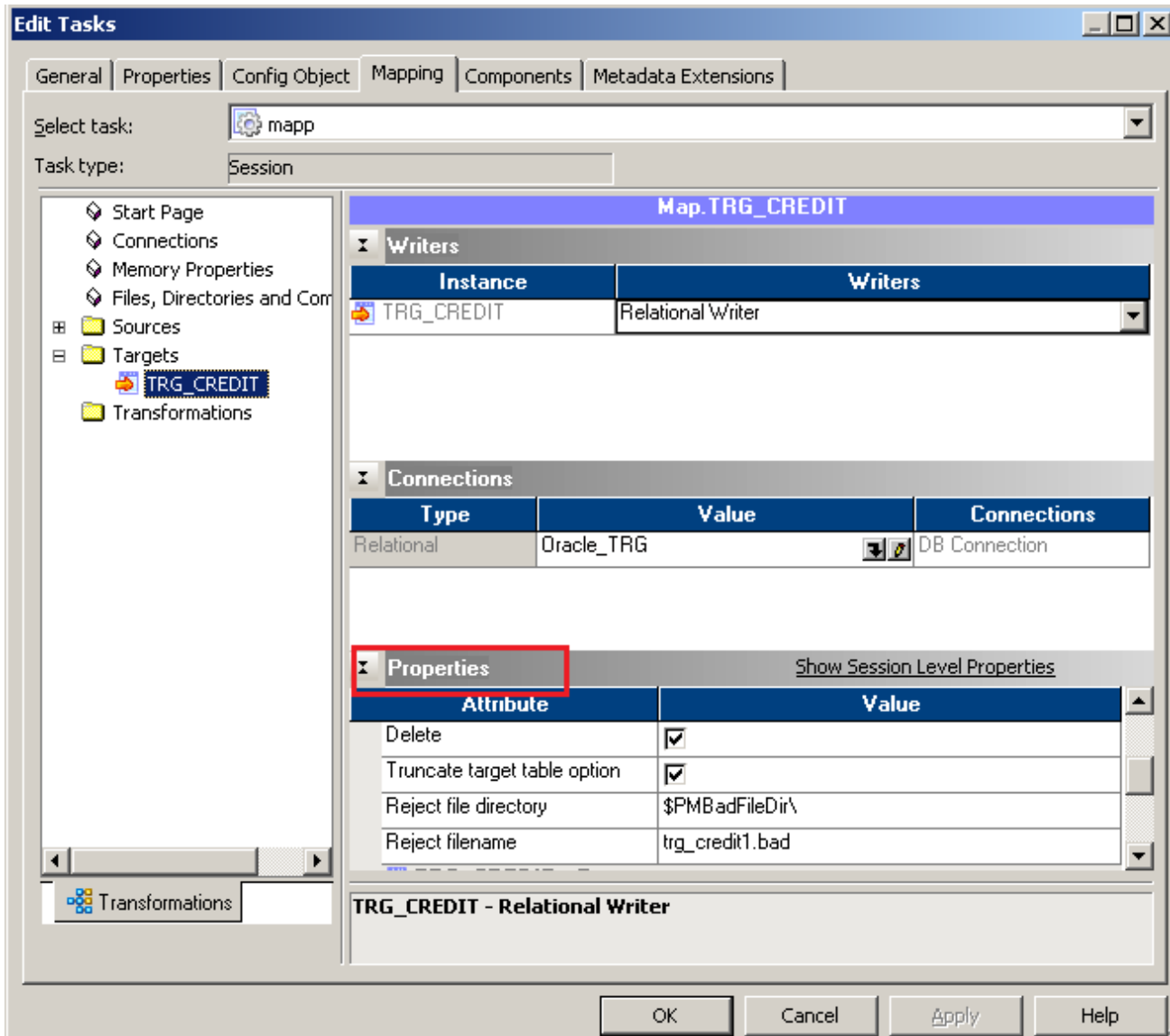


**Step-9** Now Configure Connection to Source and Target, Then Right Click on Mapp and select Edit, Then Click Mapping tab and configure connection for your source and target table schema in oracle 11g RDBMS. And then click OK.



**Step-10** Select DBConnection for Source and Target Relation Database and set property on Target Connection.





**Step-11** Now save (ctrl+s) this workflow and check it.

12/03/2012 13:38:03 \*\*\* Saving... Repository infoReposUser, Folder Transformation\_Example

Validating the flow semantics of Workflow Map...  
...flow semantics validation completed with no errors.

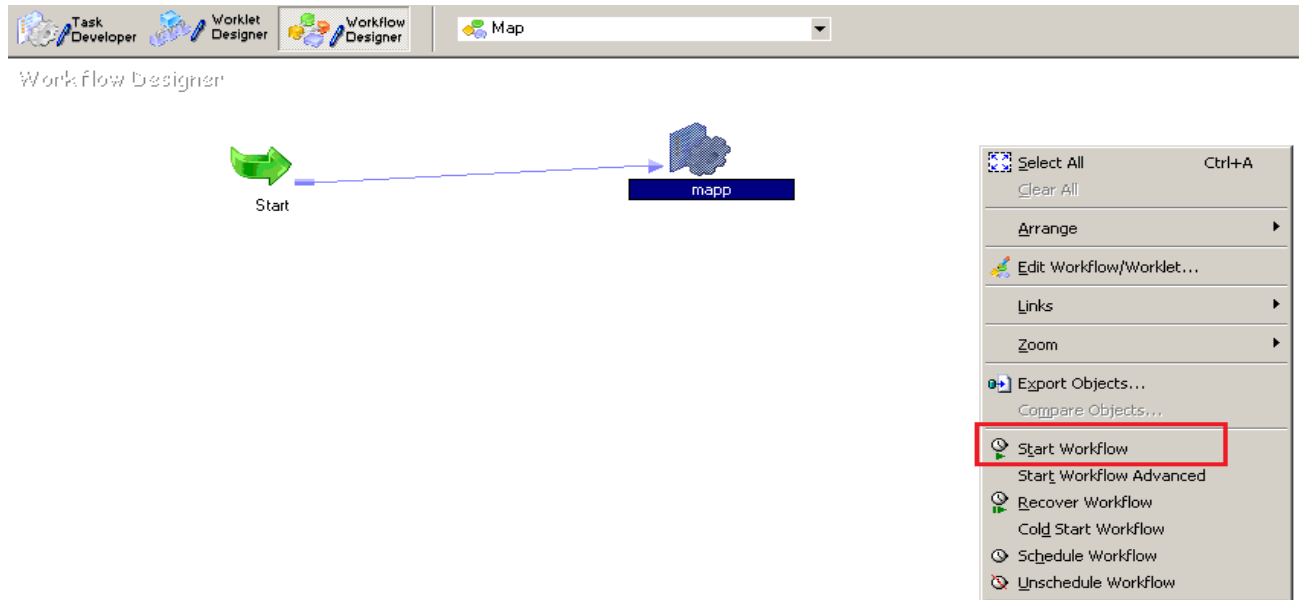
Validating tasks of Workflow Map...  
...Workflow Map tasks validation completed with no errors.

\*\*\*\*\* Workflow Map is VALID \*\*\*\*\*

Workflow Map updated.

# WORKFLOW MONITOR AND VIEW TARGET DATA

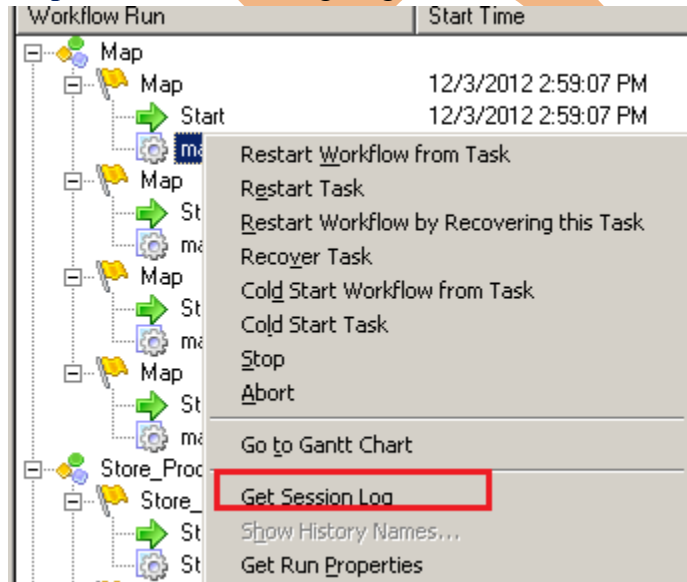
**Step-1** Now Start Workflow, Right click on Workflow Designer Window and Click on Start Workflow.



**Step-2** Check session in Informatica PowerCenter Workflow Monitor.

Task	Start Time	End Time	Status
Map	12/3/2012 2:59:07 PM	12/3/2012 2:59:13 PM	Succeeded
Start	12/3/2012 2:59:07 PM	12/3/2012 2:59:07 PM	Succeeded
mapp	12/3/2012 2:59:07 PM	12/3/2012 2:59:11 PM	Succeeded

**Step-3** Check session log, Right click on Session and select Get Session Log.



Log Events for Session: mapp

Save As... Copy Find... Refresh

Severity	Timestamp	Node	Thread	Message Co...	Message
INFO	12/3/2012 2:59:10 PM	node01_mitest	WRITER_1_1	WRT_8167	Start loading table [TRG_CREDIT] at: Mon Dec 03 14:59:10 2012
INFO	12/3/2012 2:59:10 PM	node01_mitest	WRITER_1_1	WRT_8168	End loading table [TRG_CREDIT] at: Mon Dec 03 14:59:10 2012
INFO	12/3/2012 2:59:10 PM	node01_mitest	WRITER_1_1	WRT_8141	Commit on end-of-data: Mon Dec 03 14:59:10 2012 =====
					WRT_8036 Target: TRG_CREDIT (Instance Name: [TRG_CREDIT]) WRT_8038 Inserted rows - Requested: 3 Applied: 3 Rejected: 0 Affected: 3
INFO	12/3/2012 2:59:10 PM	node01_mitest	WRITER_1_1	WRT_8035	Load complete time: Mon Dec 03 14:59:10 2012  LOAD SUMMARY =====
					WRT_8036 Target: TRG_CREDIT (Instance Name: [TRG_CREDIT]) WRT_8038 Inserted rows - Requested: 3 Applied: 3 Rejected: 0 Affected: 3
INFO	12/3/2012 2:59:10 PM	node01_mitest	WRITER_1_1	WRT_8043	*****END LOAD SESSION*****
INFO	12/3/2012 2:59:10 PM	node01_mitest	WRITER_1_1	WRT_8006	Writer run completed.
INFO	12/3/2012 2:59:10 PM	node01_mitest	MANAGER	PETL_24031	***** RUN INFO FOR TGT LOAD ORDER GROUP [1], CONCURRENT SET [1] ***** Thread [READER_1_1_1] created for [the read stage] of partition point [SQTRANS] has completed. The total run time was insufficient for any meaningful statistics.

Severity: INFO  
 Timestamp: 12/3/2012 2:59:10 PM  
 Node: node01\_mitesha  
 Thread: DIRECTOR  
 Process ID: 4840  
 Message Code: TM\_6014  
 Message: Initializing session [mapp] at [Mon Dec 03 14:59:10 2012].

#### Step-4 Now view data in Target RDBMS (Oracle 11g)

SP\_AGG TRG\_CREDIT

Columns Data Constraints Grants Statistics Column Statistics Triggers Dependencies Details Partitions Indexes SQL

Sort... Filter: Enter Where Clause Actions...

	N_ACCT_SKEY	COMMON_COA_ID	CUSTOMER_ID	GL_ACCOUNT_ID	ORG_UNIT_ID	PRODUCT_ID	AMRT_TERM	AMRT_TERM_MULT	CHARGE_OFF_BAL	COMPOUND_BASIS_CD	CUR_DELQ_BAL
1	1	700000561	123	401205	1001	9876	10 10		544	1	1578
2	2	700000562	1234	834003	1001	410	20 500		1532	2	1100
3	3	700000563	124	846131	1001	411	30 802		5454	3	1578