



“How TO Series”

Merging OBIEE Repositories

This is another document from How To Series for Oracle BI Product suite. This document briefs you the step by step approach to Merge RPDS. Join our professional training program to learn from Experts.

History:

Version	Description Change	Author	Publish Date
0.1	Initial Draft	Hitesh Mankar	01 -Feb-2011
0.1	1 st Review	Amit Sharma	01- Feb2011

Merging OBIEE Repositories

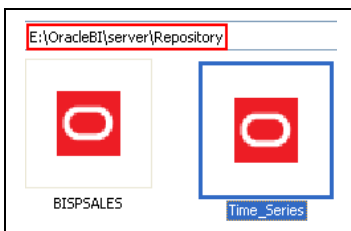
By merging OBIEE repositories the difference of the repository objects (in all three layers) from Original, modified and current repository will get merge into one repository.

We can compare the original repository with the modified repository and the original repository with the current repository and it also allow merging with the current repository on each object basis.

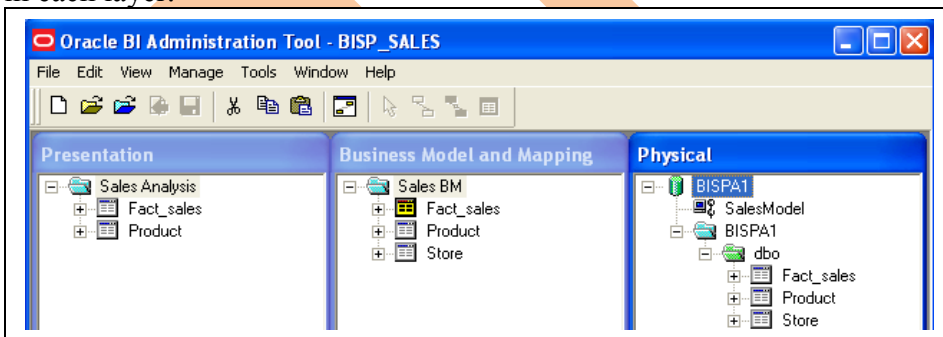
Using Merge option from OBIEE Admin Tool we can merge repositories.

Step1) Decide repositories to merge and make a copy of original RPD.

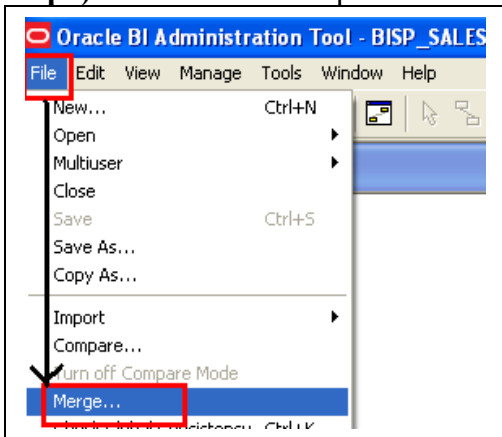
In below example we have **BISPSALES** as original rpd and **Time_series** as modified rpd and **BISP_SALES** as copy of original.



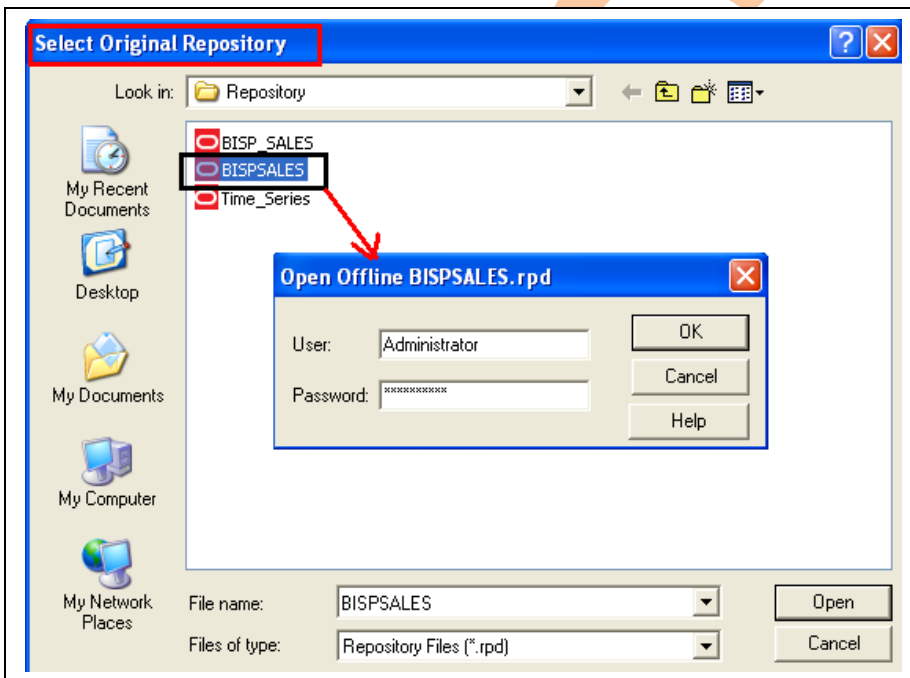
Step2) Now go to Admin Tool and select to open the copy of original rpd → Expand and checkout for models in each layer.



Step3) Go to File Menu option and select Merge.

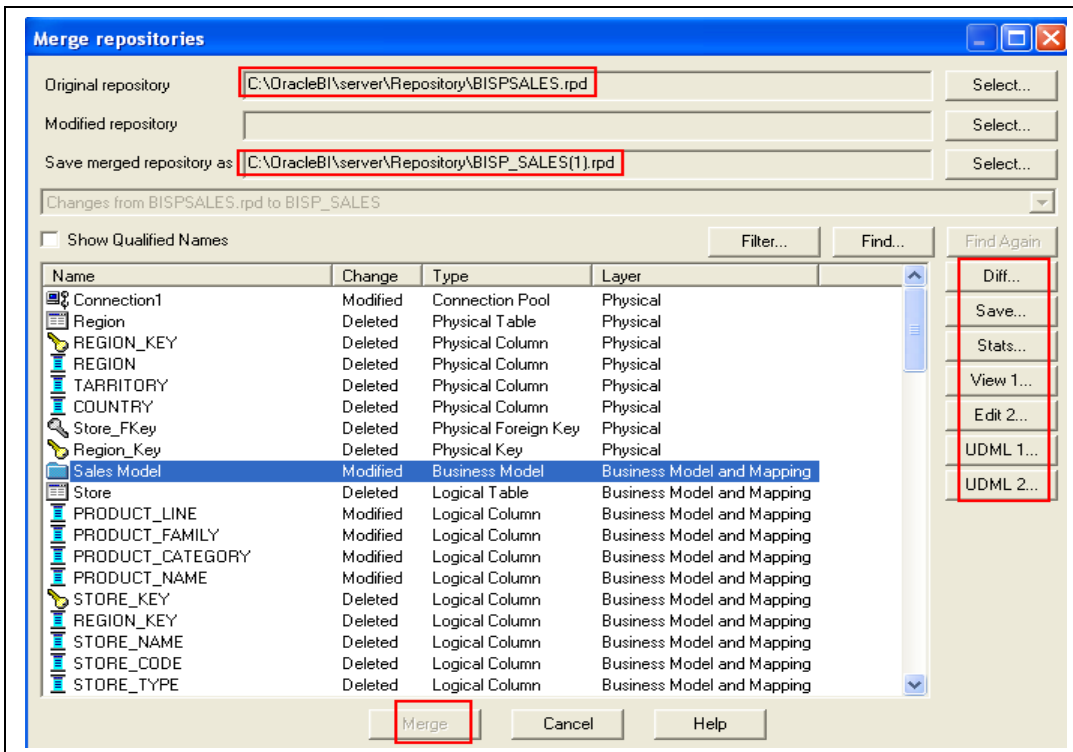


Step3) Select Original repository → Enter the User credentials in next window and click ok.



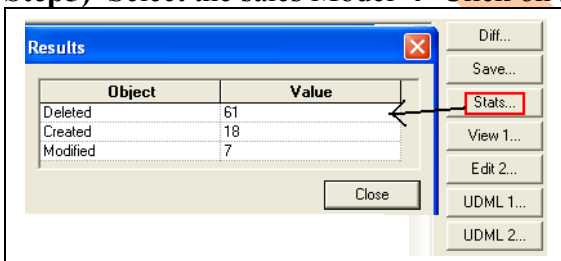
Step3) The next window will be Merge repositories → check out Original RPD and merger RPD names (Save merged repository is the new rpd name after merge process completion)

***** Note: - The Merge button is not enable to merge repositories at this step.**

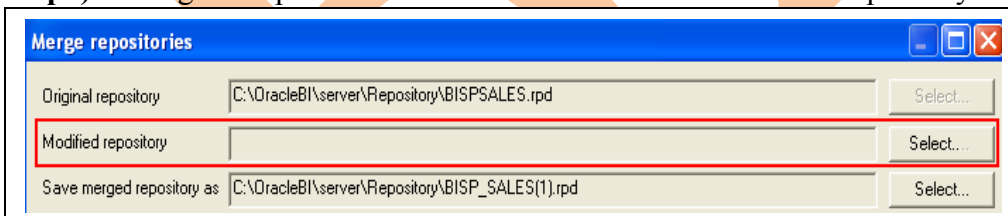


Step4) From the merge repositories window we can check out all the difference between all the objects if any.

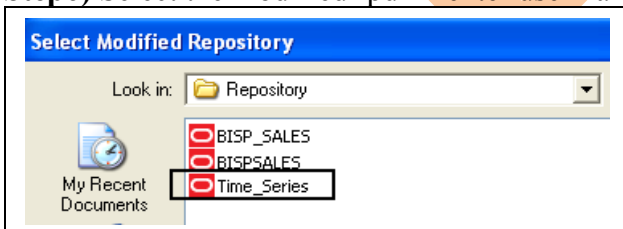
Step5) Select the sales Model → Click on stats to check out the statistics details.



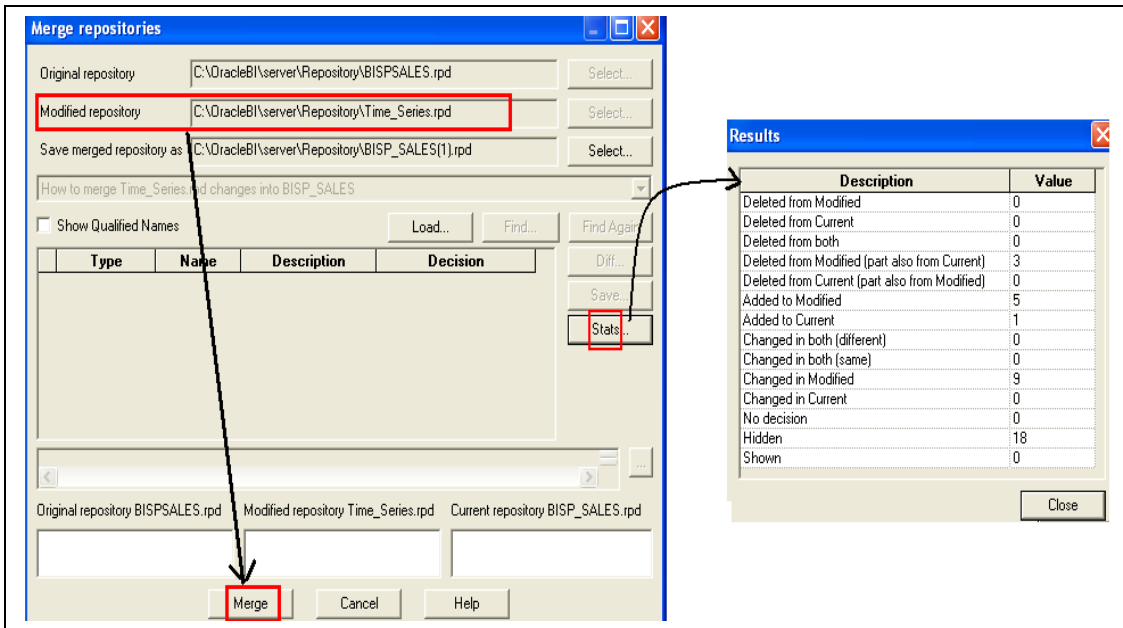
Step5) Now go to top and select **SELECT** button for Modified Repository box.



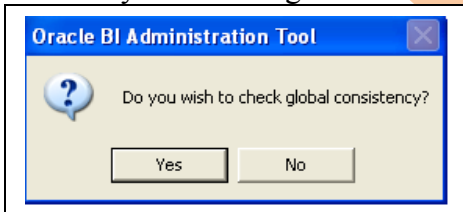
Step6) Select the modified rpd → enter user name password → click ok.



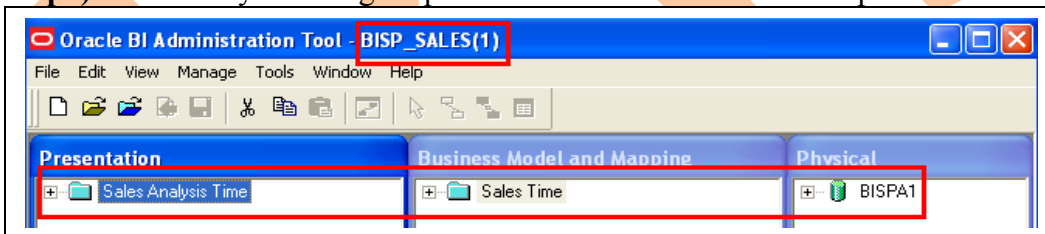
Step7) Check out the modified repository name and its path → Click **Stats** to compare both rpd.
****## Now the Merge button is enable to merge modified rpd and original rpd.**



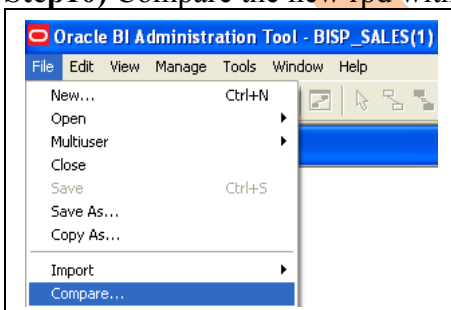
Step8) Click on Merge button to merge original and modified rpd and complete the merge process → Click Yes or No as you wish on global consistency check window of OBI Administration Tool.



Step9) Now verify the merged rpd → check out the name of new rpd.



Step10) Compare the new rpd with original rpd → Go to File Menu option select Compare.



Step 11) Select the original rpd to compare → Select objects and click on different properties to compare the

rpds.

