



A Hands-On Guide for Essbase Text Measures

Description:

BISP is committed to provide BEST learning material to the beginners and advance learners who wish to build their career in BI and Data Warehousing world. We are Subject Matter Expert for Oracle BI product suite. We helped thousands of learners to Hyperion Product suite. In the same series we have prepared many hands-on guides for Hyperion Essbase, Planning, HFM, FDQM, and Reporting. The given documents show how to create text as measure in Hyperion Essbase and show to the end users in SmartView. [Join our professional training.](#)

History:

Version
0.1

Description Change

Author
Amit Sharma

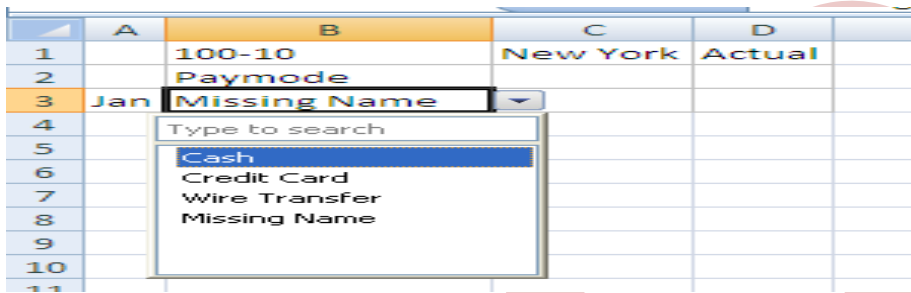
Publish Date
12th Aug 2012

Contents

Creating Text as Measure in Essbase	3
The following general guidelines apply to both text and date measures:	3
Step#1 Enable Typed Measure.....	3
Step#2 Creating Paymode as Text Measures	3
Step#3 Enter the text list values	4
Step#4 Associate Text List with Measures	5
Step#5 Validating Text Measure	5
Create Connection from Smart View to Essbase Cube.....	5
Create a new connection	6
Select Private Connection.....	6
Select Application and Database.....	7
Select Ad hoc Analysis	7

Creating Text as Measure in Essbase

Essbase allows users to select a value from the list of values appears as drop down text. Now users can select text instead of number to make more meaningful selection. This requirement was pending for long and finally Essbase came up with **Text As Measure** solution. This makes far easier for end user to some value from predefined list of values. Example, user may like to select the payment mode from the list of selected values, whereas Essbase store their corresponding index position. Earlier, this wasn't possible and as interactive as we have with the help of Typed measures. Now, we see the step by step way to create text measures.



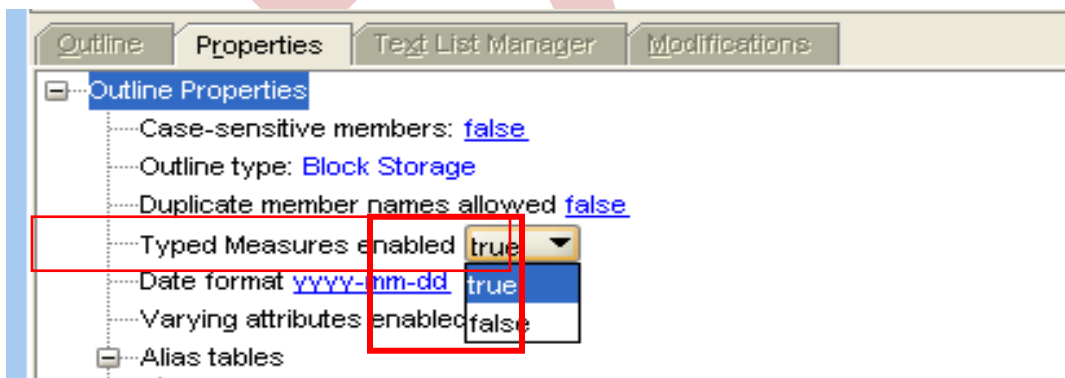
	A	B	C	D
1		100-10	New York	Actual
2		Paymode		
3	Jan	Missing Name		
4		Type to search		
5		Cash		
6		Credit Card		
7		Wire Transfer		
8		Missing Name		
9				
10				
11				

The following general guidelines apply to both text and date measures:

- Add them to the existing measures dimension; for example, Accounts.
- Do not aggregate them. By default, text and date measures are assigned the non- aggregation symbol (^).
- If the measure is not designed to be aggregated, queries should be made at the same level at which data was loaded.
- Once you enable an outline to support typed measures, it cannot be reverted back to an Outline that does not support typed measures.
- Text and date measures functionality applies to both aggregate storage and block storage Applications.

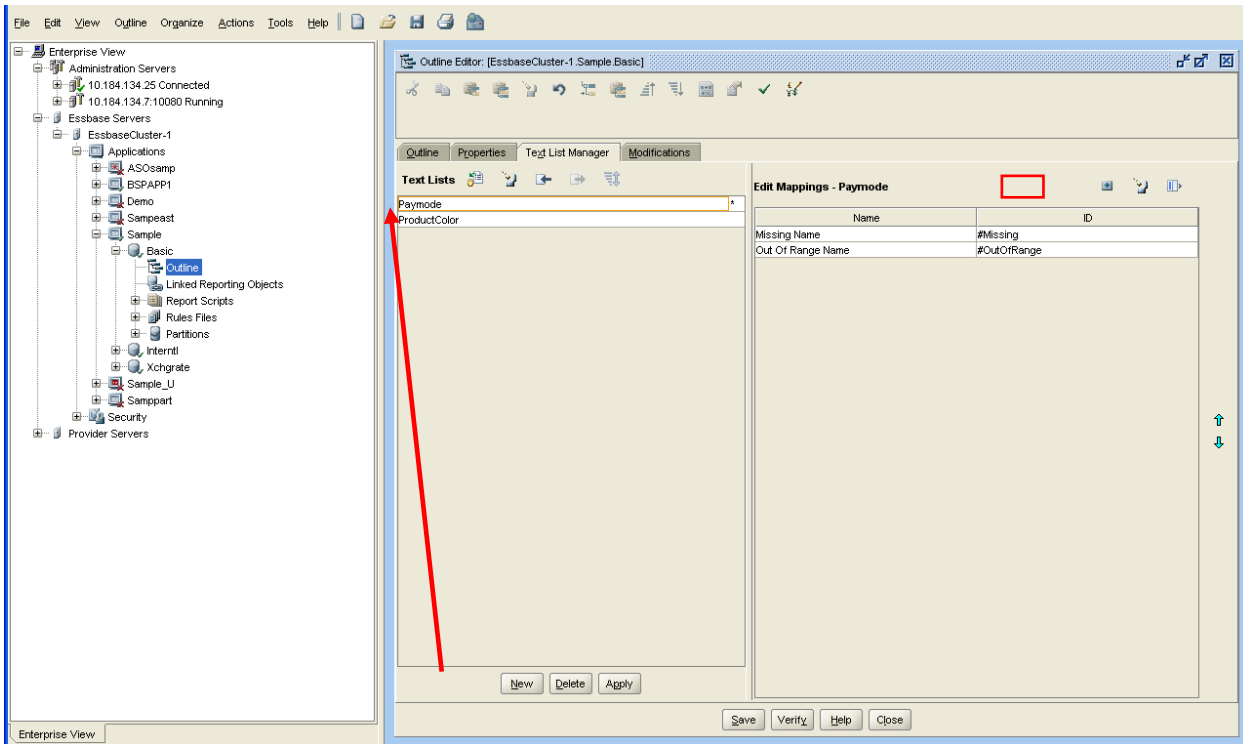
Step#1 Enable Typed Measure.

- i) In the Outline Editor, select the **Property Tab**
- ii) From the “Typed Measures Enable” drop down list select **true**



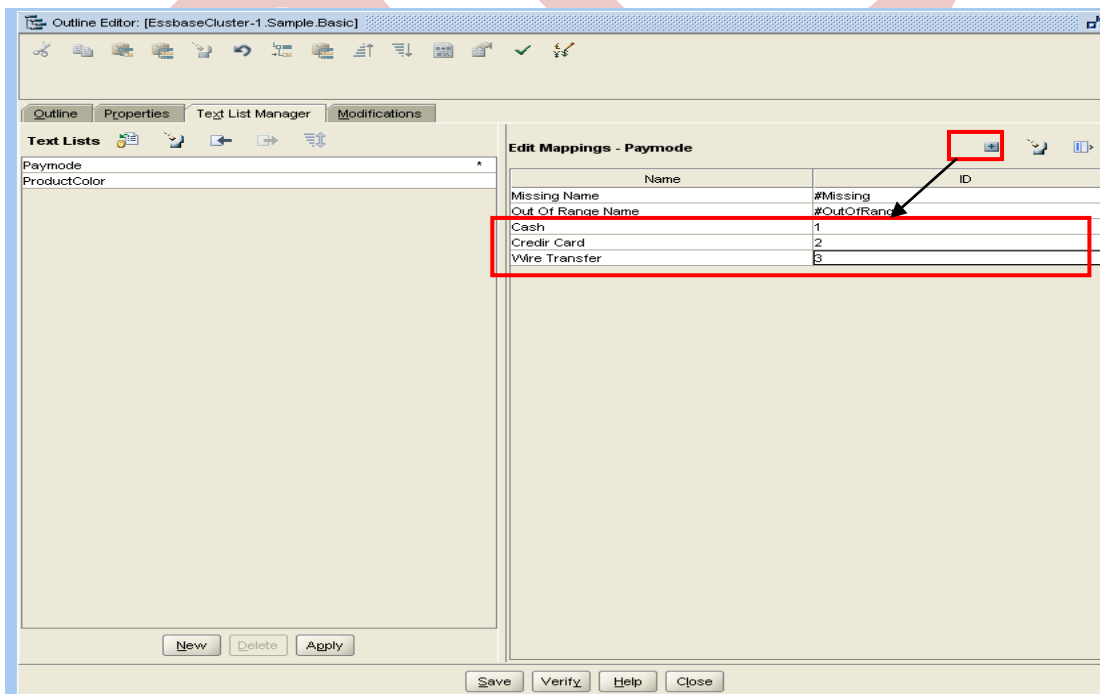
Step#2 Creating Paymode as Text Measures

- i) Create a text List named as Paymode.



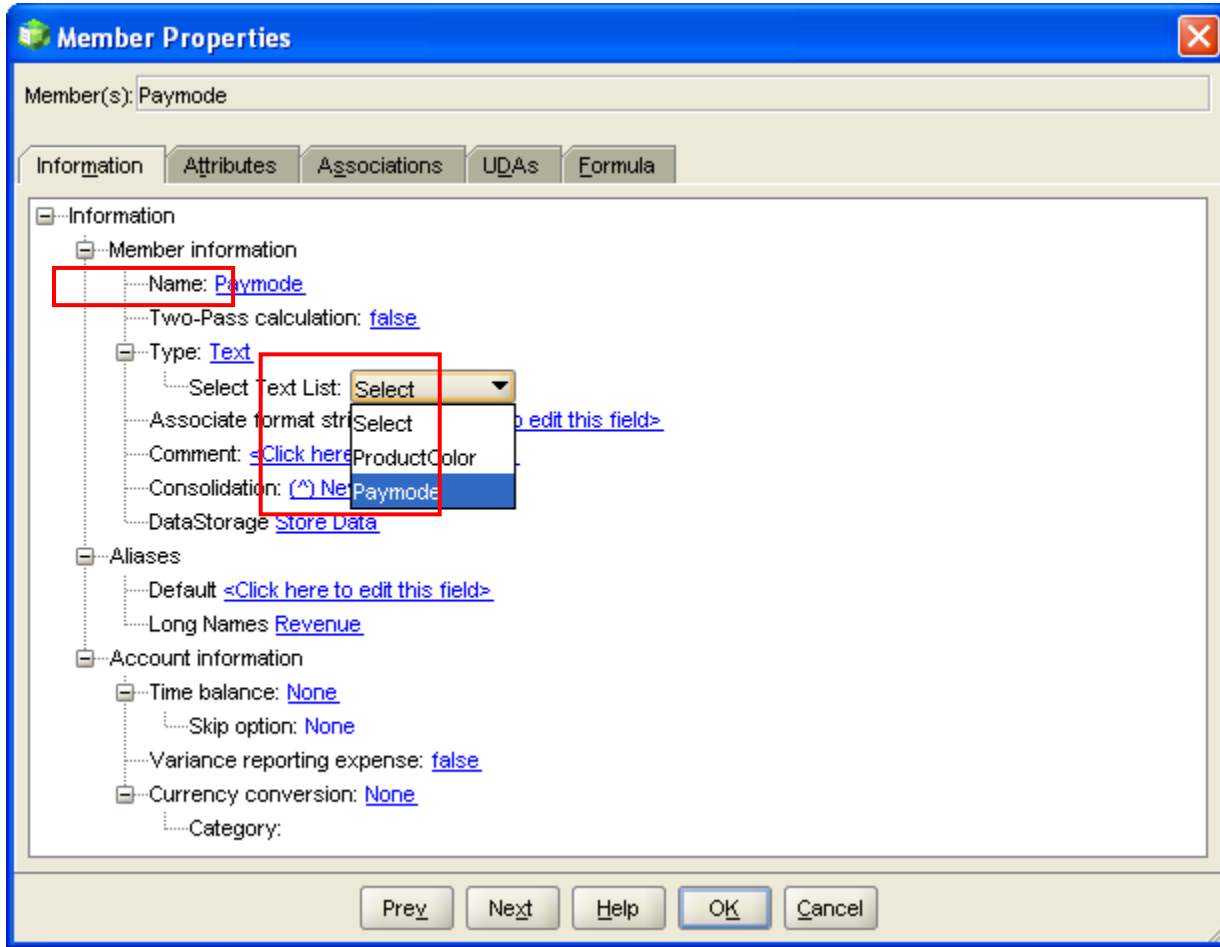
Step#3 Enter the text list values

Enter the below text list values [Cash, Credit Card, Wire Transfer], also assign the index number to each text value



Step#4 Associate Text List with Measures

Associate Paymode Account Dimension member with Paymode Text List.

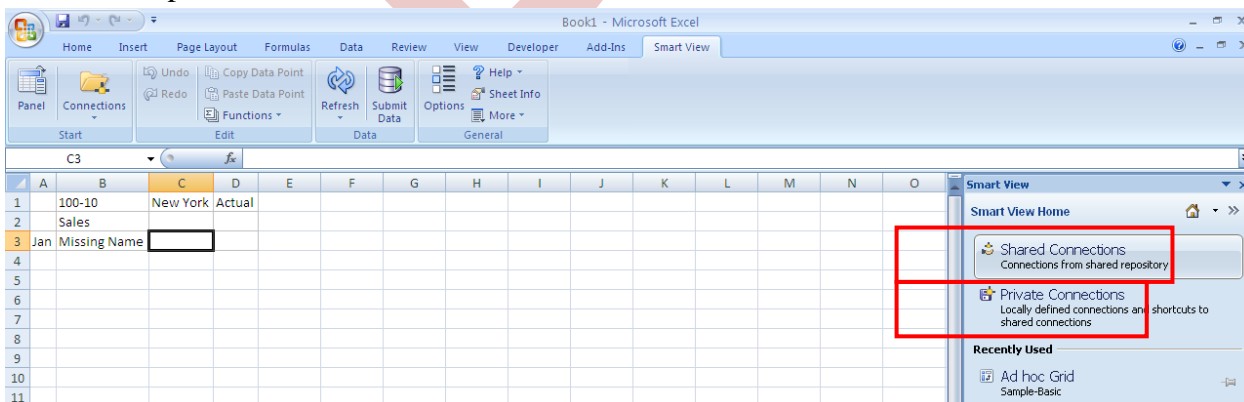


Step#5 Validating Text Measure

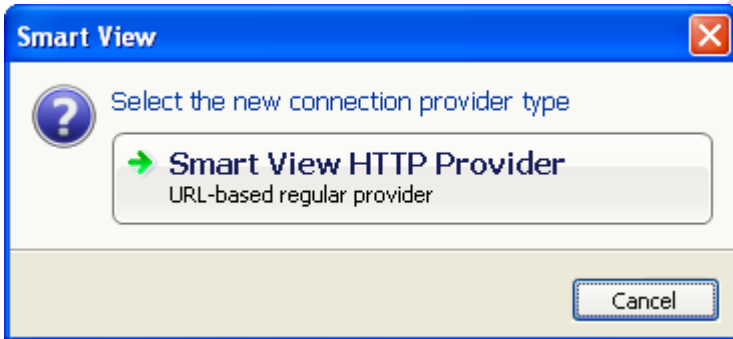
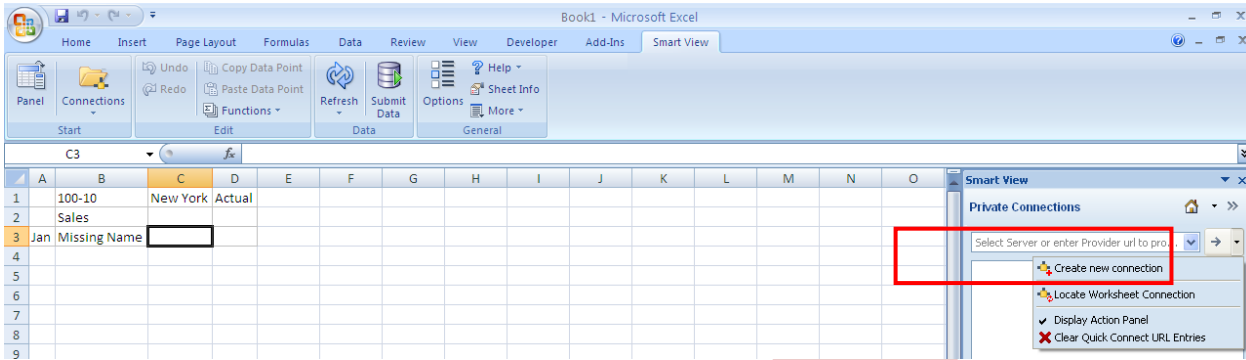
Validating Text Measure values from end user point of view in Smart List.

Create Connection from Smart View to Essbase Cube.

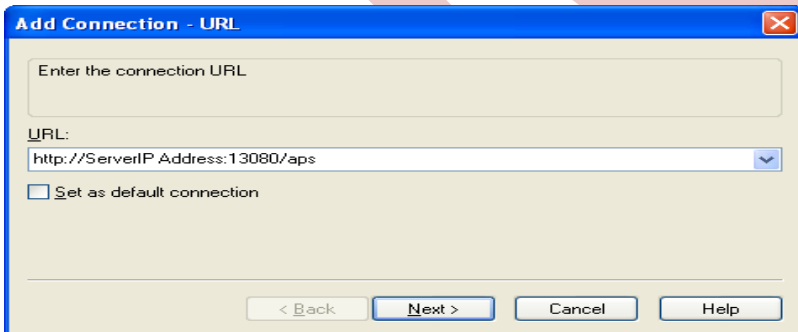
- Select Panel under Smart View
- From the drop down select Private Connection.



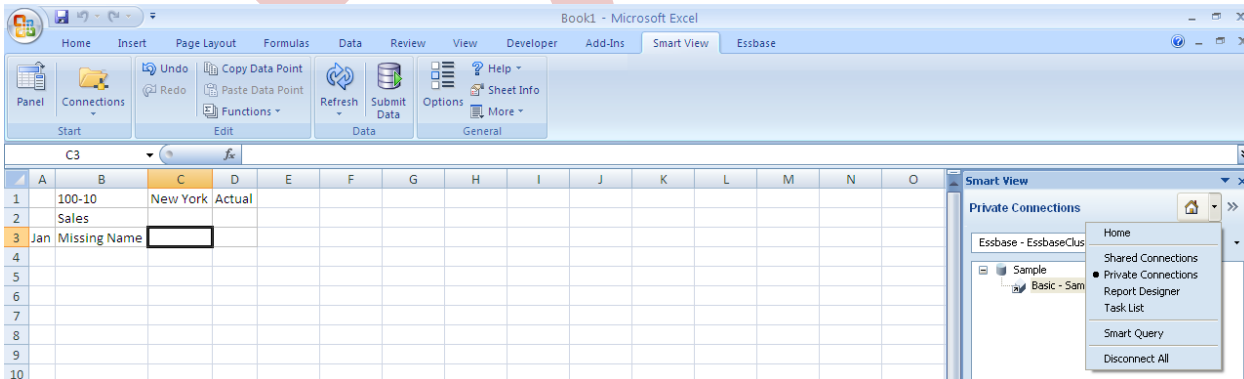
Create a new connection



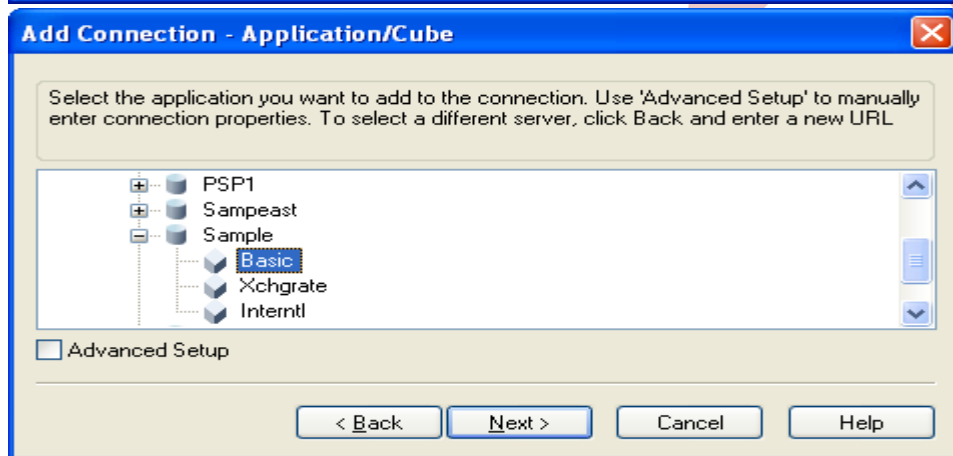
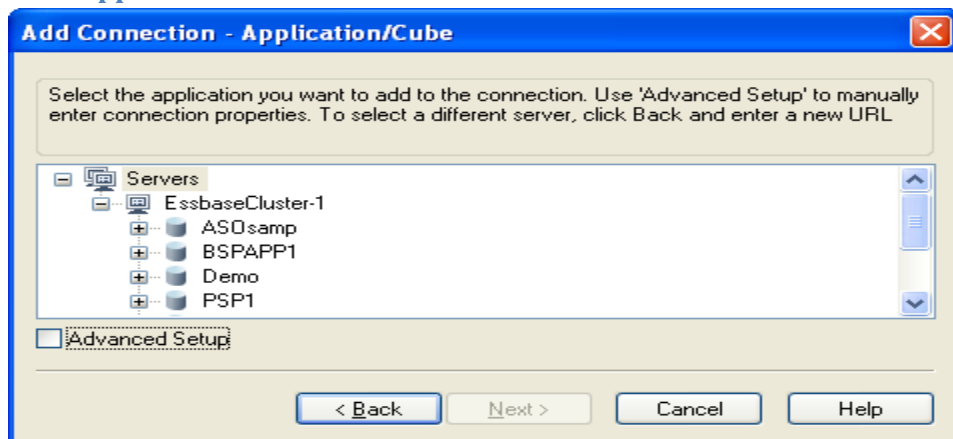
Specify the connection URL



Select Private Connection

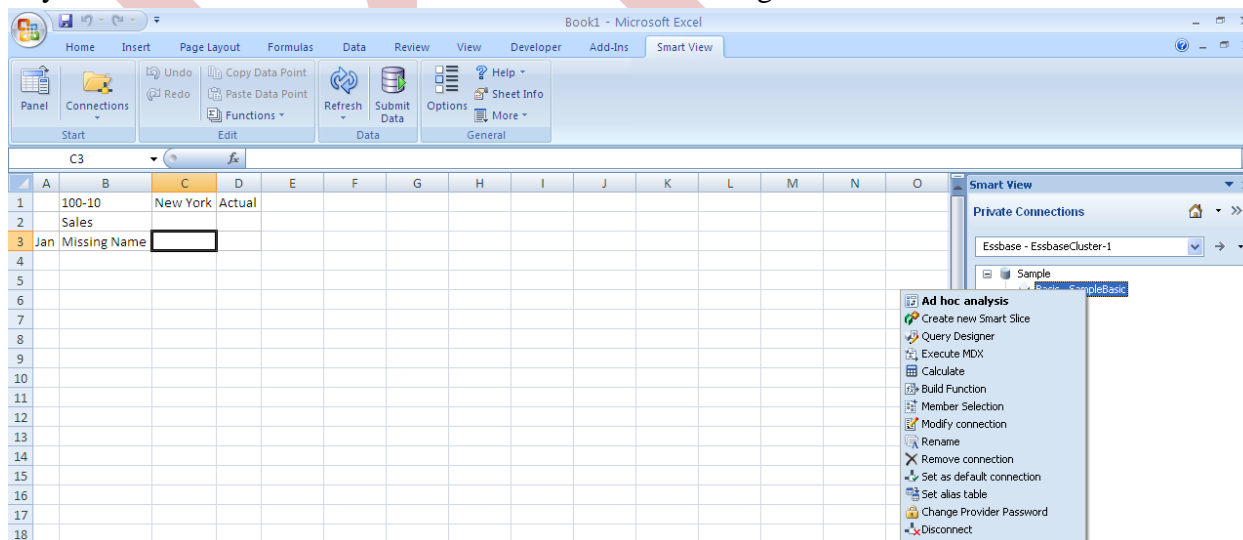


Select Application and Database



Select Ad hoc Analysis

Key-in Connection Name. You are connected now. Now right click on Database and Select **Ad hoc analysis**



Select Paymode from the Drop down list which we created as Typed measure