



Essbase Cube Migration

Migrating Sales Order Processing Cube

From

System 9.3.1 to EPMA 11.1.1.3

Prepared By

Amit Sharma

Hyperion/OBIEE Trainer/Consultant

learnhyperion.wordpress.com

Presentation Objective

- Essbase Cube Migration from system 9.x to 11.1.1.3
 - ▾ Using Migration Wizard utility.
 - ▾ Using manually migration process.

Migration Wizard An Introduction

Migration Wizard guides you through step by step process to migrate (copying) applications and databases across Essbase Servers. The beauty of Migration Wizard is that there is no source server downtime during migration process and source server is absolutely unaffected. The another remarkable feature is that, using this wizard, you can migrate an application from a Windows development server to a UNIX production server.

Point to be remembered

- You must have Create/Delete Applications permissions.
- you also need Create/Delete Users and Groups permissions for the target server.
- Make sure the target server is running.
- Back up any databases to be migrated.

What Information Is Migrated?

During migration, the following information can be migrated with the application:

- Databases and their objects (such as calculation scripts, report script, rules files, member select files, and Essbase Query Designer files)
- Data (.pag and .ind files) is not migrated.
- All database outlines (including member properties, outline properties, and formulas)
- Application and database properties, such as cache settings, with the exception of disk volumes
- Users and groups
- Passwords are migrated. After migration, you can edit user and group properties on the target server without affecting user and group permissions on the source server.
- Filters and their associations [Lets Verify it]
- You do not need to re-assign filters to users or groups after migration. [Lets Verify it]
- Substitution variables [Lets Verify it]
- Linked reporting objects (LROs) [Lets Verify it]
- Custom-defined functions
- Custom-defined macros



During migration, the following information is not migrated:

- Data (.pag and .ind files)
- Files that are not recognized as objects on Essbase Server, such as spreadsheet files, text files, MaxL script files, ESSCMD scripts, and so forth
- The Essbase configuration file (essbase.cfg)
- Disk volumes
- Copy partitions
- Triggers

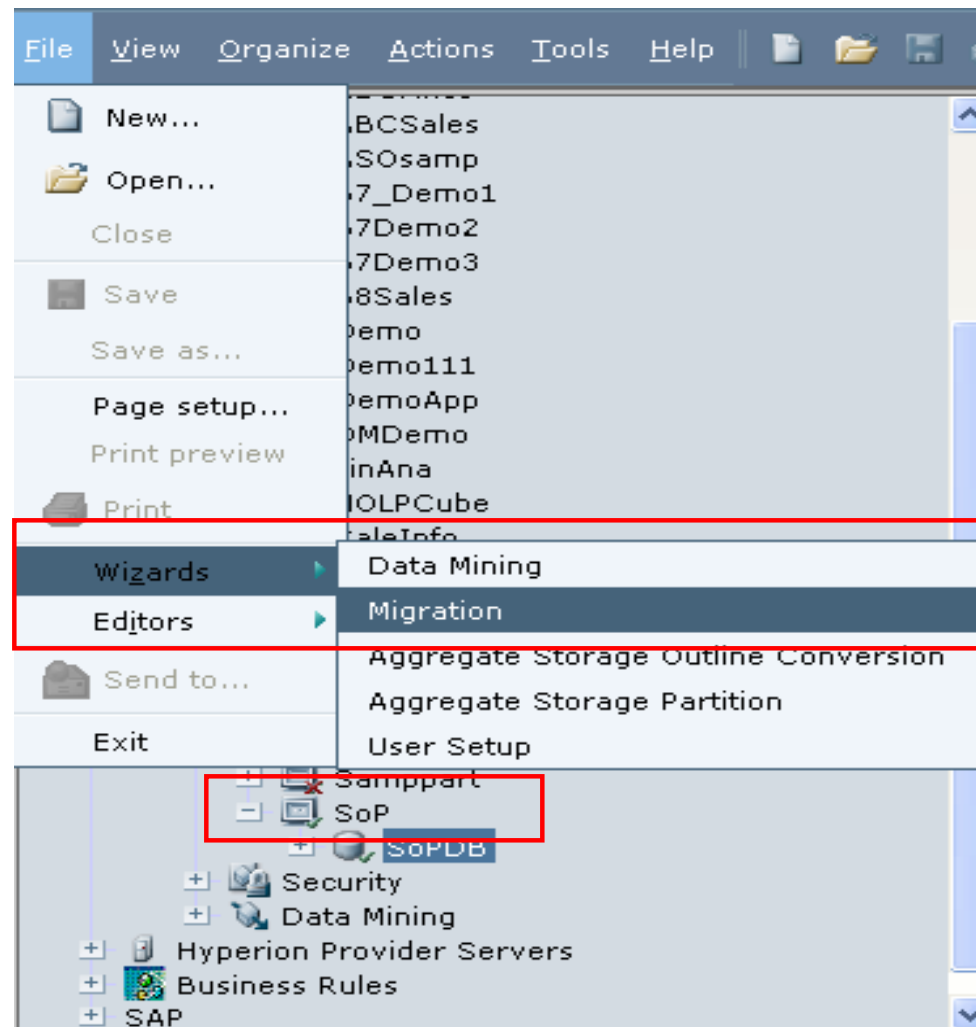
The Source Cube is in Hyperion System 9.3.1

The screenshot displays the Essbase Administration Services 9.3.1 interface. The top status bar indicates the user is connected as 'admin' on host 'niit-7ae95365e3'. The main window is titled 'Outline Editor: [niit-7ae95365e3.SoP.SoPDB]'. On the left, a tree view shows the folder structure, with 'SoP' expanded to show 'SoPDB' and 'Outline' selected. The main pane shows the outline structure for 'SoPDB (Active Alias Table: Default)'. The outline includes the following elements:

- Accounts Accounts <3>
- Periods_days Time <2>
- Products_Group <3> {Pkg Type, Prod_MFT}
 - Books (+) <11>
 - Music (+) <7>
 - Videos (+) <3>
- Stores_Dim <7>
- Market <4>
- Scenario <5> (Label Only)
- Prod_MFT Attribute [Type: Numeric] <4>
- Pkg Type Attribute [Type: Text] <2>

Buttons for 'Save', 'Verify', 'Help', and 'Close' are visible at the bottom right of the editor window.

Sales Order Processing Cube Migration Wizard



Specifying Source and Target Essbase Server

Migration Wizard

Select Source and Target Essbase Server

This wizard helps you migrate applications and databases from a source to target Essbase Server.

- Select Essbase Servers.
- Select applications.
- Select objects.
- Migrate security permissions (advanced).
- Select users (advanced).
- Select groups (advanced).

You can migrate an application at a novice or advanced level. Novice migration enables you to select individual objects, users, and applications to migrate. To migrate, you need Create/Delete Applications and Applications of the target Essbase Server.

User level:

Source Essbase Server:

Target Essbase Server:

Migrate in background

< Back Next > Finish Cancel Help

A novice-level migration allows you to select which types of Essbase objects to migrate, but you cannot select individual objects.

Specify Source and Target Application

Migration Wizard

Select Source and Target Application

When you migrate an application, the target application can be a new application on the target Essbase Server, or it can overwrite an existing application.

Select Essbase Servers.
 Select applications.
 Select objects.
 Migrate security permissions (advanced).
 Select users (advanced).
 Select groups (advanced).

Source application on Essbase Server: [niit-7ae95365e3]
SoP

Target application on Essbase Server: [amit-pc]
Sop_App

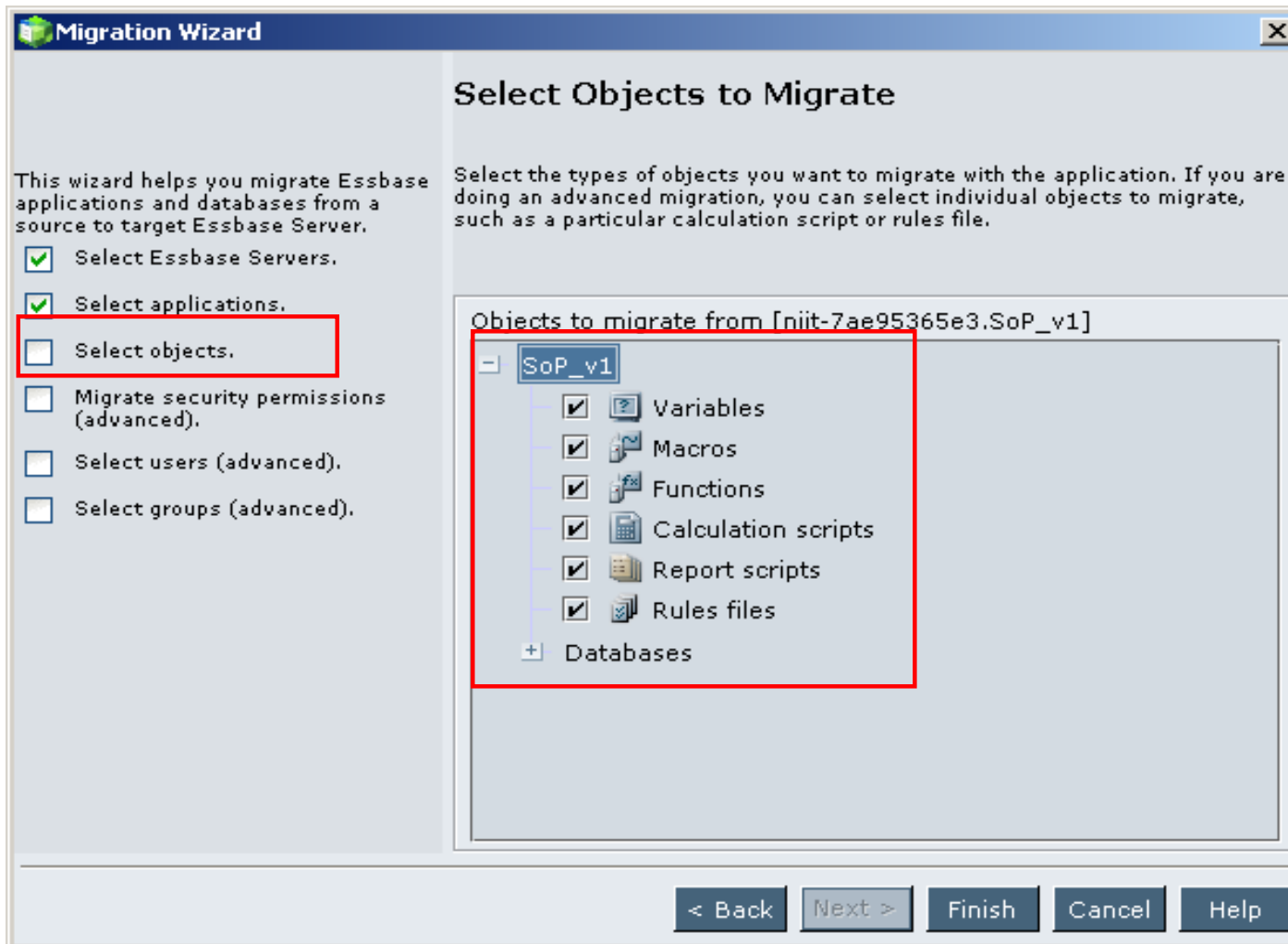
Replace target objects if they exist.

< Back Next > Finish Cancel Help

Source Application Exist in Hyperion System 9.3.1 version

Target Application Exist in Hyperion System 11.1.1.3 version

To be Migrated & not to be migrated artifacts



- 1) Business Data
 - 2) MaxL Script
 - 3) LRO
 - 4) Essbase.cfg
 - 5) Esscmd
 - 6) Spread Sheet
- Addin's Query (.eqd)

Migrating Essbase Cube Data

Option #1 : By Using Data Export Command

```
SET DATAEXPORTOPTIONS
```

```
{  
  DataExportLevel "LEVEL0";  
}
```

```
Export Database 'Sop_App'. 'SoPDB' level0 data in columns to data_file  
'c:\\outputfile1.csv', 'c:\\outputfile2.csv', 'c:\\outputfile3.csv' ;
```

Option #2 By Using Report Script : A Subset of the cube or entire cube

```
<PAGE (Product_Group, Measures, Store_Dim,Market)
```

```
<COLUMN (Scenario, Year)
```

```
Actual
```

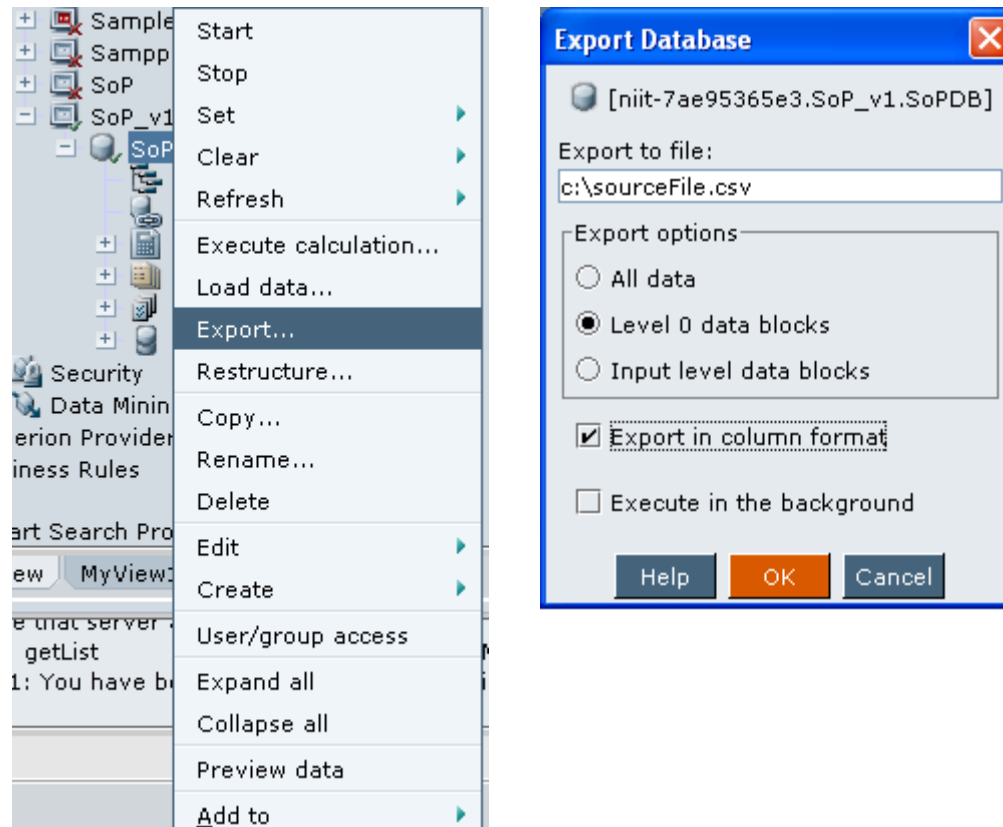
```
<ICHILDREN Qtr1
```

```
<ROW (Market)
```

```
<IDESCENDANTS East
```

```
!
```

Exporting Level 0 Data



MaxL Script

To migrate MaxL Script we need to use OS copy command to copy and paste from source to target. Use the same directory structure.

Essbase.cfg

To migrate Esscmd.cfg we need to use OS copy command to copy and paste from source to target. Use the same directory structure.

Export LROs

export database FinOps.Findb lro to server directory 'exported_LRO'

Spread Sheet Report .eqd

To migrate .eqd we need to use OS copy command to copy and paste from source to target. Use the same directory structure.

Installation Summary(Manually)

- 1) Install the latest version in the new hardware.
- 2) create all the applications and databases in the new server.
- 3) Create all the directories that are necessary for the production procedures.
- 4) stop the old server
- 5) Take the backup of the all essbase files outlines, rule files, calc scripts and report scripts and leve0 data and batch procdures for all the cubes and move to staging area.
- 6) stop the new server
- 7) copy the files to the respective folders.
- 8) Start the server and start all the applications.
- 9) collect all the substitution variable information from the old server and redefine in the new server.
- 10) open all the outline and save.
- 11) collect all the users, groups and filter information from the old server and redefine in the new server.
- 12) Do the necessary changes for the batch program and test the batch by keeping the input files in the input directory
- 13) load level0 data and aggregate.
- 14) Compare and validate the data at the high level.
- 15) Identify a users who can quickly verify and give feed back. fix if any issues.
- 16) Map the source interfce to the new server.
- 17) Define the shedule jobs in the new server.
- 18) Monitor the batches carefully up to the point everything is stable.



Question??