



Importing and Exporting Jobs DataStage 8.5 Lab#23

Description:

This is one of our documents from DataStage learning series. The document contains a step-by-step process for importing and exporting of jobs in DataStage. In this document, we have shown how to export the job to a repository and import it back.

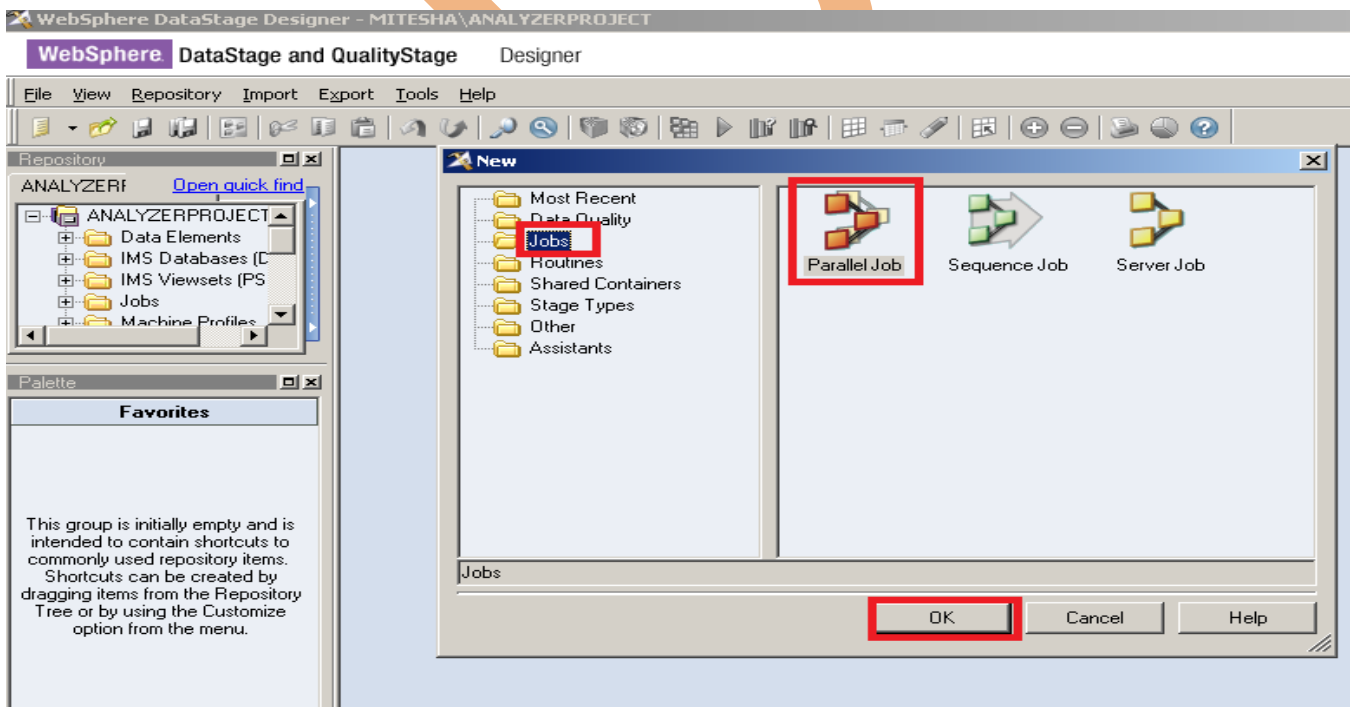
History:

Version	Description Change	Author	Publish Date
0.1	Initial Draft	Varun Khare	10 th Oct 2011
0.1	Review#1	Amit Shara	10 th Oct 2011

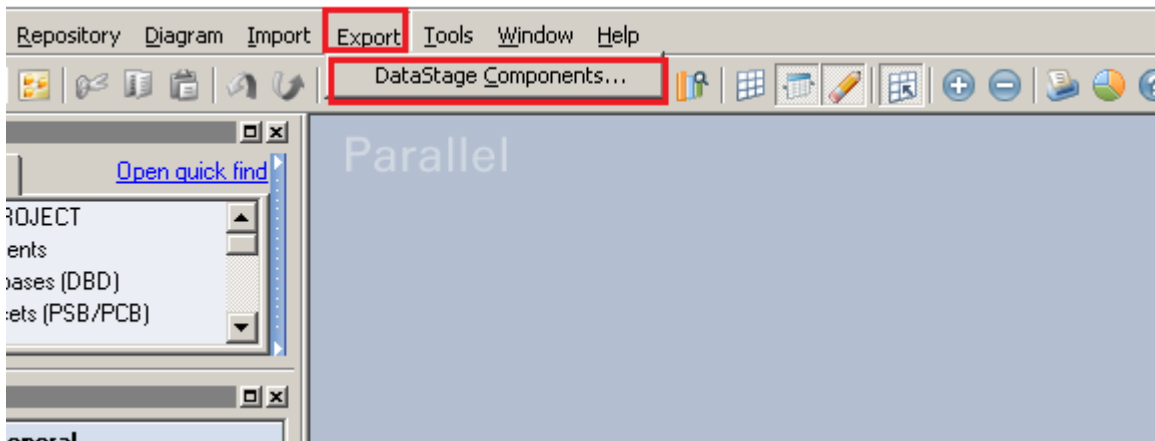
Step-1 :- In Windows Click Designer Client of DataStage



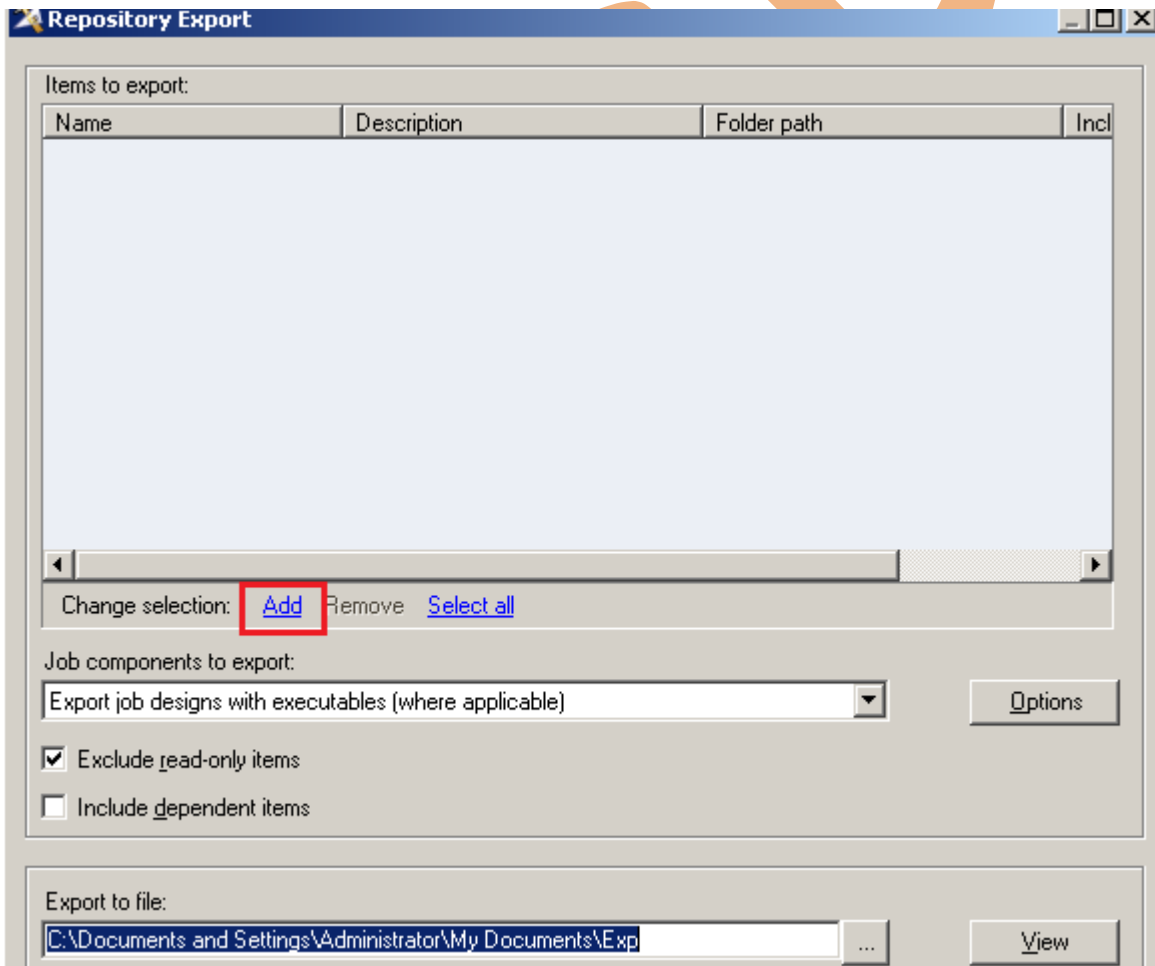
Step-2 :- New Window open than click Jobs than click Parallel because we use parallel jobs.



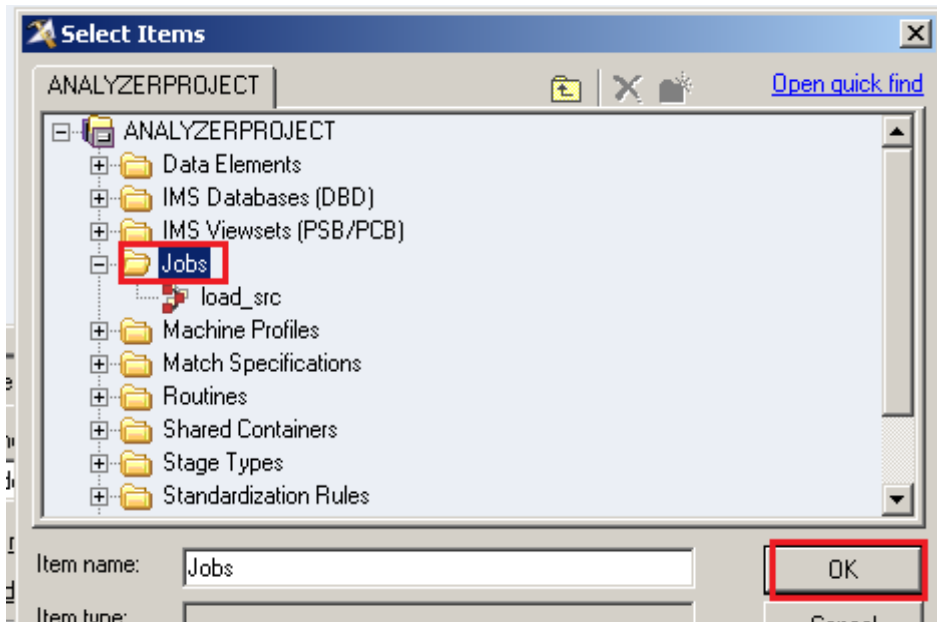
Step-3 :- Now click to Export and Datastage Components for Export utility.



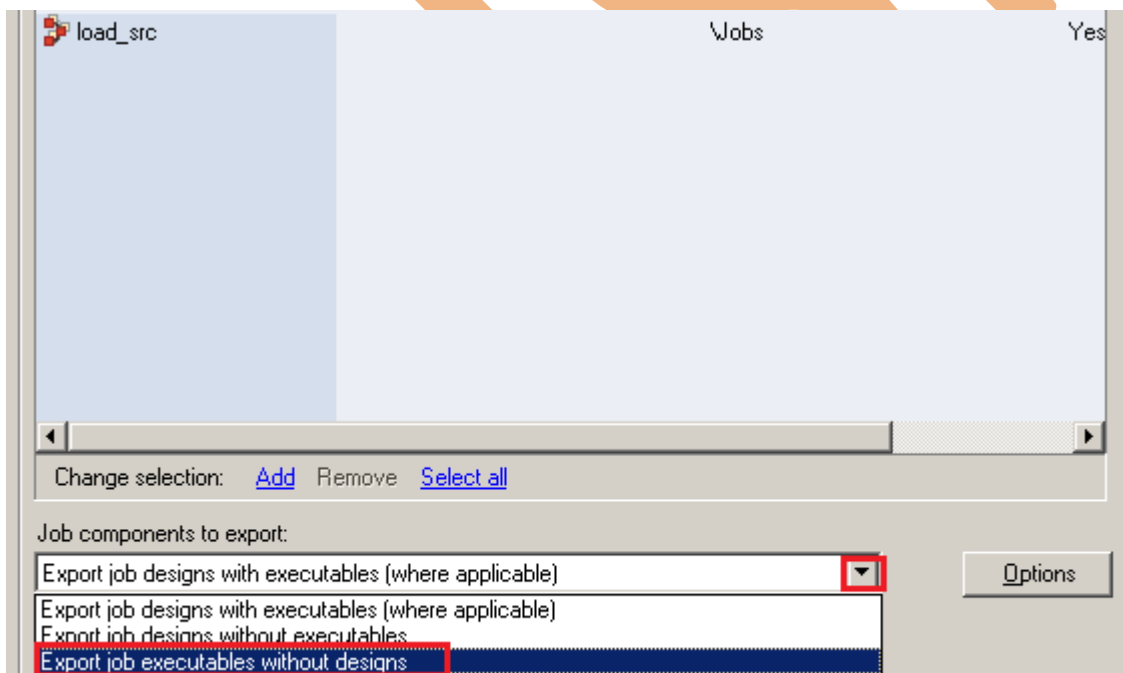
Step-4 :- See this is repository export tab, now whatever jobs we wanted to export so click on Add button.



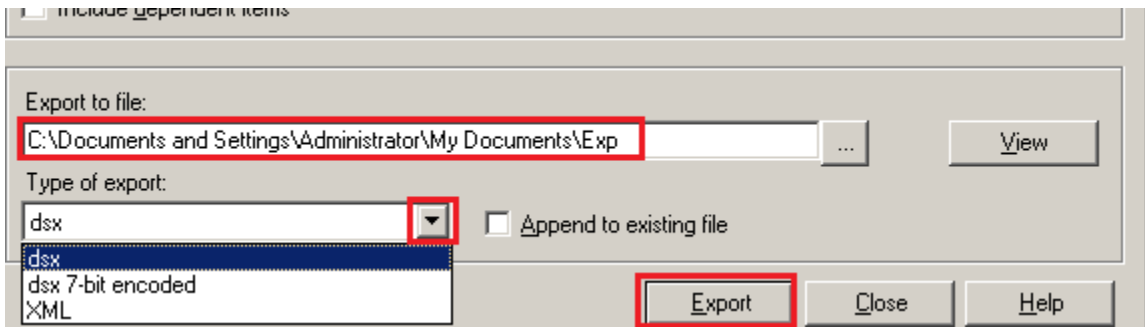
Step-5 :- After clicking on Add Button we need to select jobs so click on jobs folder and Ok



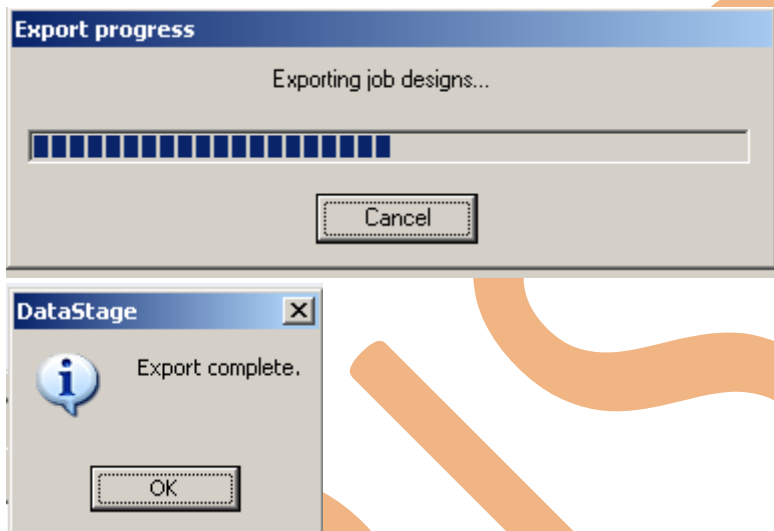
Step-6:- When we click on jobs folder all the jobs automatically imported from jobs into repository export palette.
Now See Below which type of exporting you want we can select here.



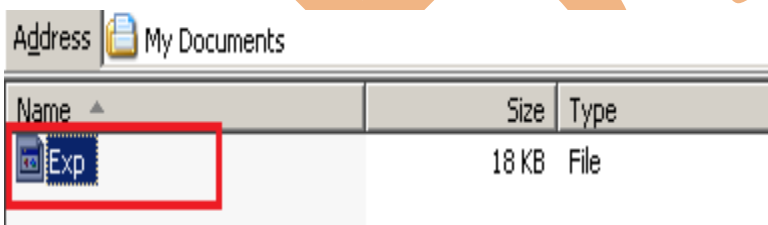
Step-7:- Now Specify path here where you want to store your export file and basically 3 types of export format so we select dsx format and click on Export.



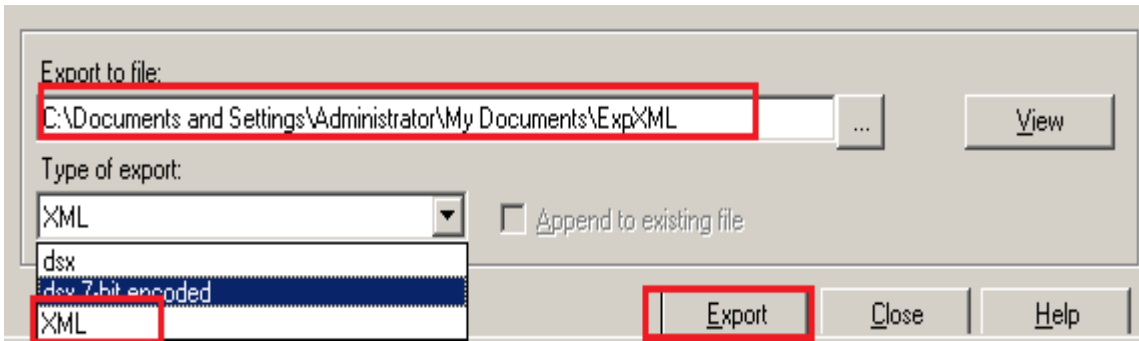
Step-8 :- See exporting is under process and second snapshot shows export complete..



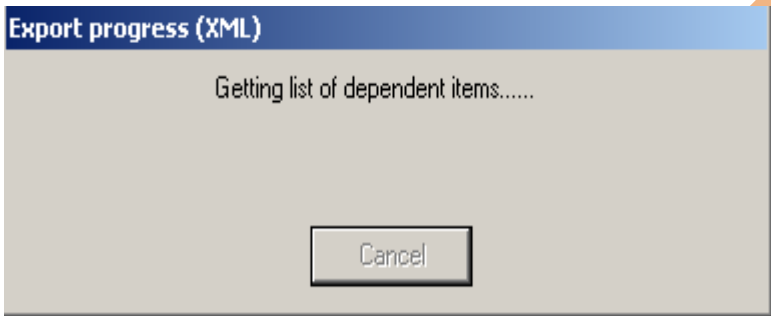
Step-9:- See In my documents there's file created called Exp this contain all the jobs data (executed or not executed jobs).



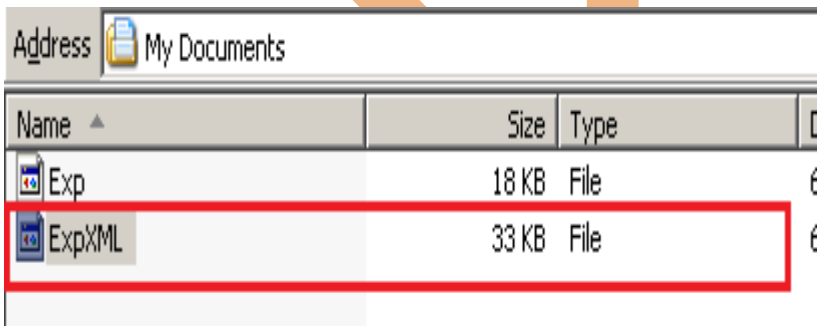
Step-10:- Now We wanted to export file into XML format so apply same process and specify path and format and click on Export.



Step-11 :- See exporting is under process and second snapshot shows export complete..



Step-12 :- See here another file is occur this XML file and all data.



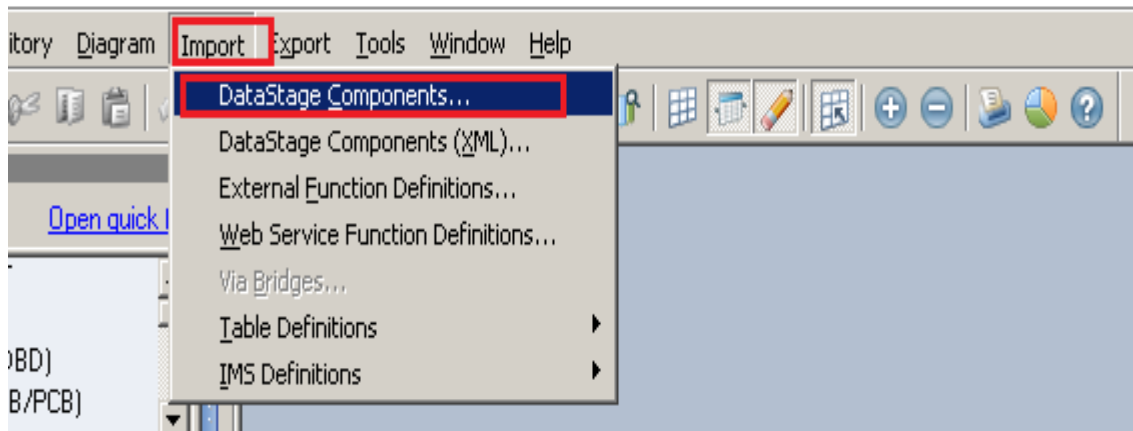
```

<?xml version="1.0" encoding="UTF-8"?>
<DSExport>
  <Header CharacterSet="ENGLISH" ExportingTool="IBM Websphere DataStage Export" ToolVersion="8" ServerName="MITESHA"
  <Job Identifier="load_src" DateModified="2013-05-31" TimeModified="15.36.44">
    <Record Identifier="ROOT" Type="JobDefn" Readonly="0">
      <Property Name="Name">load_src</Property>
      <Property Name="NextID">1</Property>
      <Property Name="Container">VO</Property>
      <Property Name="JobVersion">50.0.0</Property>
      <Property Name="ControlAfterSubr">0</Property>
      <Collection Name="MetaBag" Type="MetaProperty">
        <SubRecord>
          <Property Name="Owner">APT</Property>
          <Property Name="Name">AdvancedRuntimeOptions</Property>
          <Property Name="Value">#DSProjectARTOptions#</Property>
        </SubRecord>
      </Collection>
      <Property Name="NULLIndicatorPosition">0</Property>
      <Property Name="Template">0</Property>
    </Record>
  </Job>
</DSExport>

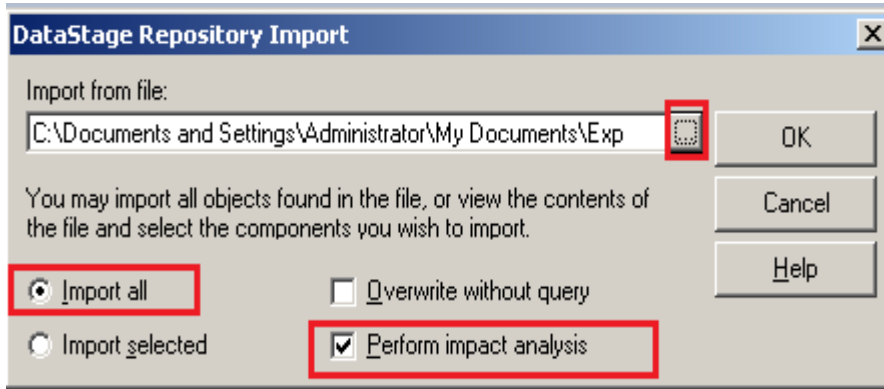
```

Importing Jobs In DATASTAGE

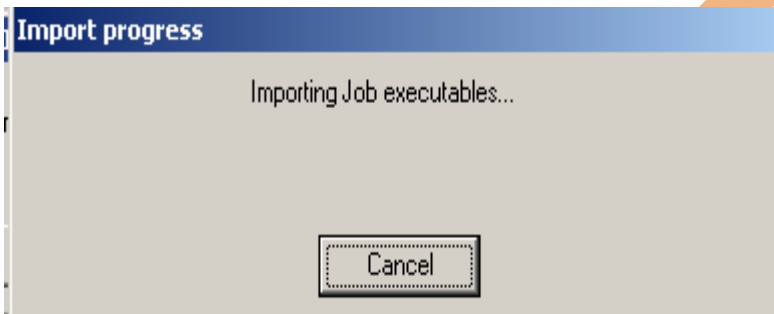
Step-1:- Now we want to import data in datastage so for this there are many ways if you want import XML file so import and datastage component(XML) but we have .dsx file so click on Datastage Components.



Step-2:- Now See there are multiple options available here so we want to import all material whatever exist in EXP file and also we want to analysis our data so check this one also.



Step-3:- See here importing job executables.



Step-4:- After importing jobs importing like this.

