



---

## Merging Disparate Data Sources in DataStage 8.5 Lab#22

---

### Description:

This is one of our documents from DataStage learning series. This document describes in step by step manner how to merge disparate Data Sources (Oracle and SQL Server in transformation). The Merge stage is a processing stage. It can have any number of input links, a single output link, and the same number of reject links as there are update input links. In this example we have merge data from Oracle and SQL taken as source and load into Flat file as target.

---

### History:

---

Version	Description Change	Author	Publish Date
0.1	Initial Draft	Varun Khare	10 <sup>th</sup> Oct 2011
0.1	Review#1	Amit Shara	10 <sup>th</sup> Oct 2011

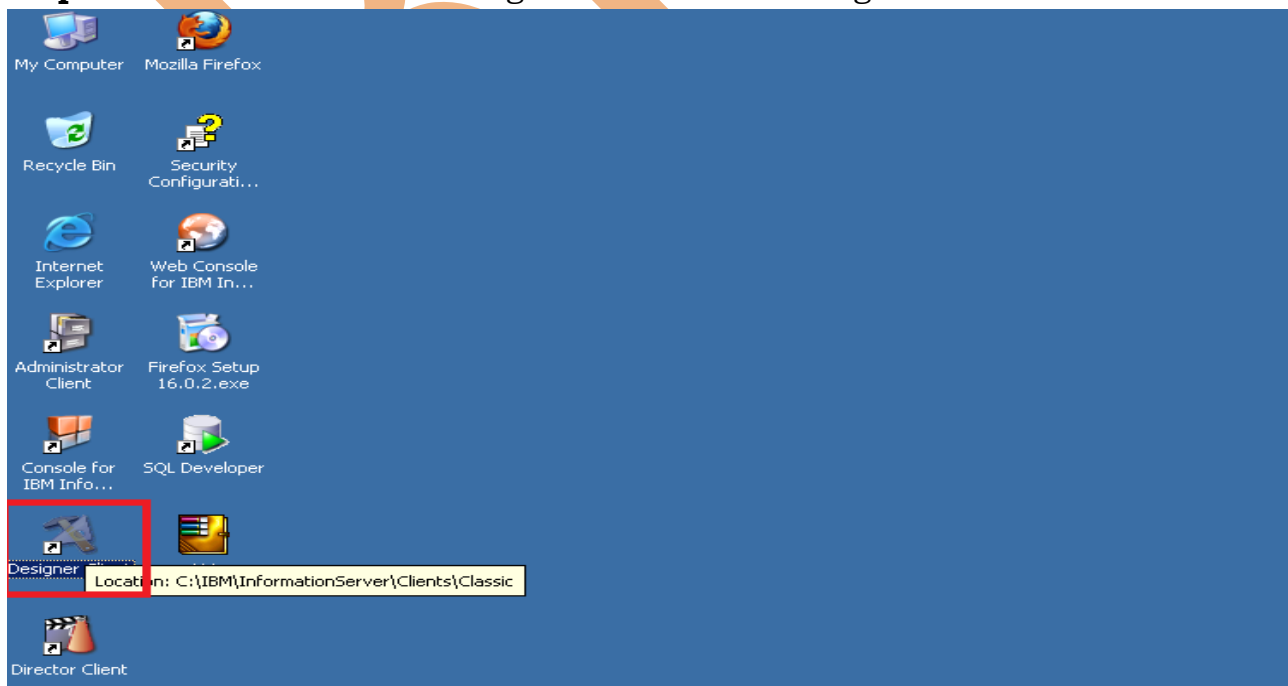
---

# Mapping Sheet

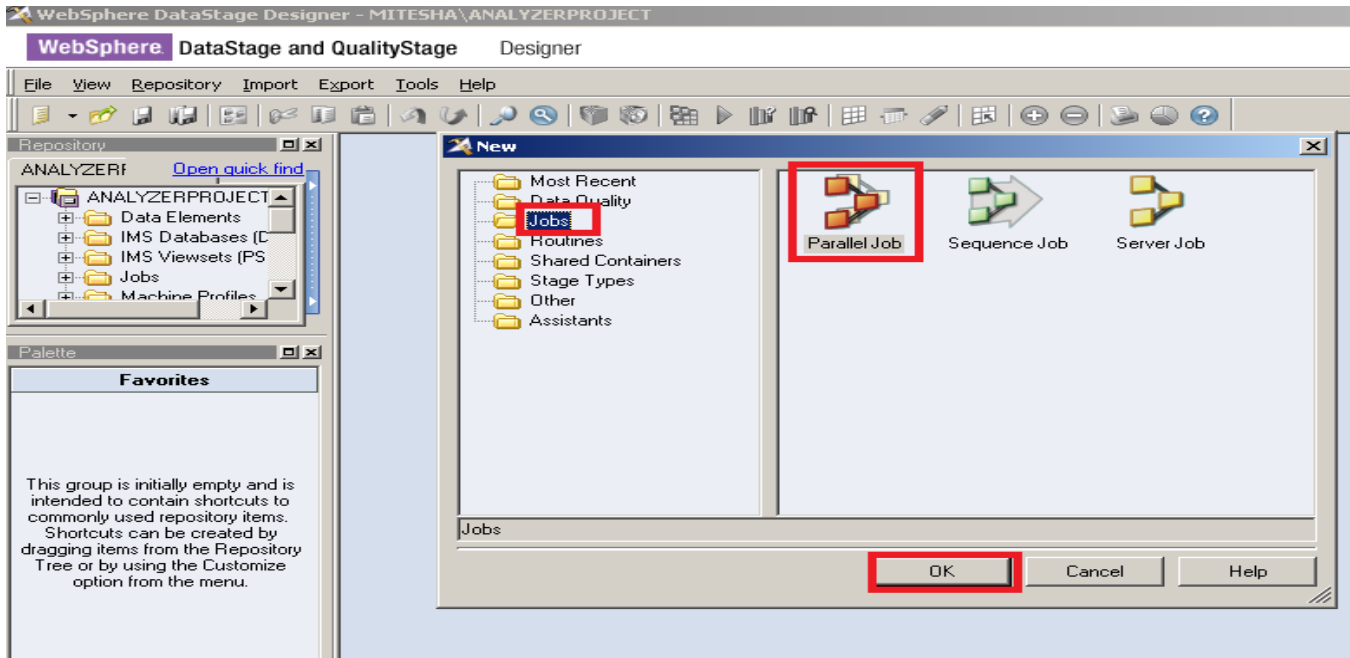
Transformation	Merge Transformation						
Source Name	Oracle, Sql Server						
Target Name	Flat File						
Merge Condition	src_creditcard.account_officer_cd=src_account_officer_cd.account_officer_cd						
Oracle Source Details			Sql Server Details			Flat File	
Schema	Entity Name	Data Types	Schema	Destination Entity Name	DataTypes	DestinationField Name	Datatype
src_creditcard	N_ACCT_SKEY	NUMBER(14,0)	sa	ACCOUNT_OFFICER_CD	NUMBER(5,0)	N_ACCT_SKEY	NUMBER(14,0)
src_creditcard	COMMON_COA_ID	NUMBER(14,0)	sa	CREATED_BY	VARCHAR2(30 BY	COMMON_COA_ID	NUMBER(14,0)
src_creditcard	CUSTOMER_ID	NUMBER(14,0)	sa	CREATION_DATE	TIMESTAMP(6)	CUSTOMER_ID	NUMBER(14,0)
src_creditcard	GL_ACCOUNT_ID	NUMBER(14,0)	sa	DEFINITION_LANGUAGE	VARCHAR2(4 BYT	GL_ACCOUNT_ID	NUMBER(14,0)
src_creditcard	ORG_UNIT_ID	NUMBER(14,0)	sa	ENABLED_FLAG	VARCHAR2(1 BYT	ORG_UNIT_ID	NUMBER(14,0)
src_creditcard	PRODUCT_ID	NUMBER(14,0)	sa	LAST_MODIFIED_BY	VARCHAR2(30 BY	PRODUCT_ID	NUMBER(14,0)
src_creditcard	AMRT_TERM	NUMBER(14,0)	sa	LAST_MODIFIED_DATE	TIMESTAMP(6)	AMRT_TERM	NUMBER(14,0)
src_creditcard	V_CCY_CODE	VARCHAR2(20 B	sa	LEAF_ONLY_FLAG	VARCHAR2(1 BYT	V_CCY_CODE	VARCHAR2(20 B
src_creditcard	CHARGE_OFF_BAL	NUMBER(14,0)	sa	ACCOUNT_OFFICER_DIS	VARCHAR2(10 BY	CHARGE_OFF_BAL	NUMBER(14,0)
src_creditcard	COMPOUND_BASIS_CD	NUMBER(14,0)				COMPOUND_BASIS	NUMBER(14,0)
src_creditcard	CUR_DELO_BAL	NUMBER(14,0)				CUR_DELO_BAL	NUMBER(14,0)
src_creditcard	IDENTITY_CODE	NUMBER(14,0)				IDENTITY_CODE	NUMBER(14,0)
src_creditcard	ISSUE_DATE	VARCHAR2(100 BYTE)				ISSUE_DATE	VARCHAR2(100
src_creditcard	ORG_PAR_BAL	NUMBER(14,0)				ORG_PAR_BAL	NUMBER(14,0)
src_creditcard	PMT_FREQ	NUMBER(14,0)				PMT_FREQ	NUMBER(14,0)
src_creditcard	REMAIN_NO_PMTS_C	NUMBER(14,0)				REMAIN_NO_PMTS	NUMBER(14,0)

## Steps to merge disparate data sources

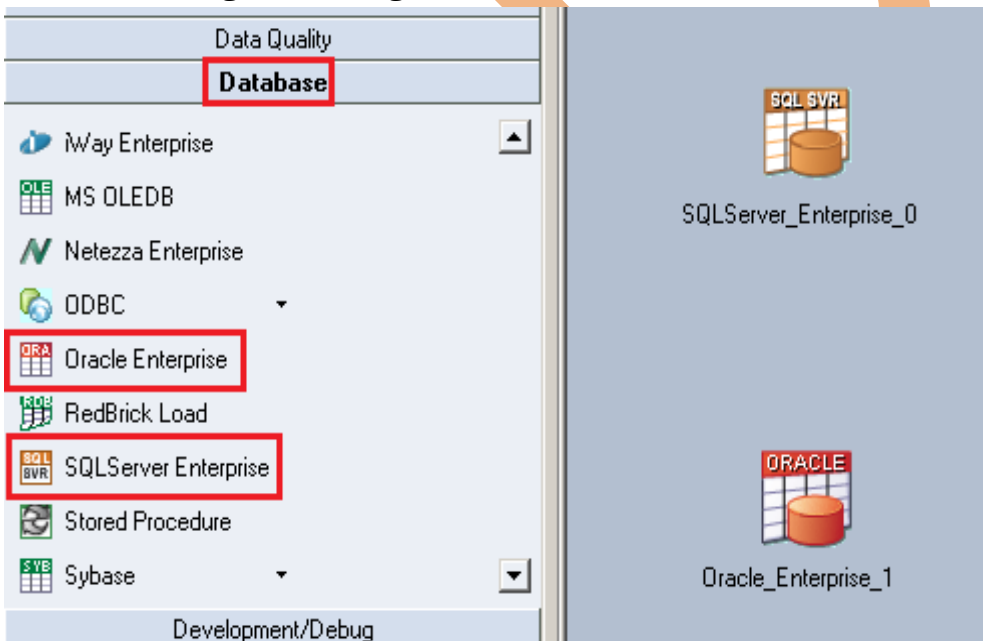
**Step-1 :-** In Windows Click Designer Client of DataStage



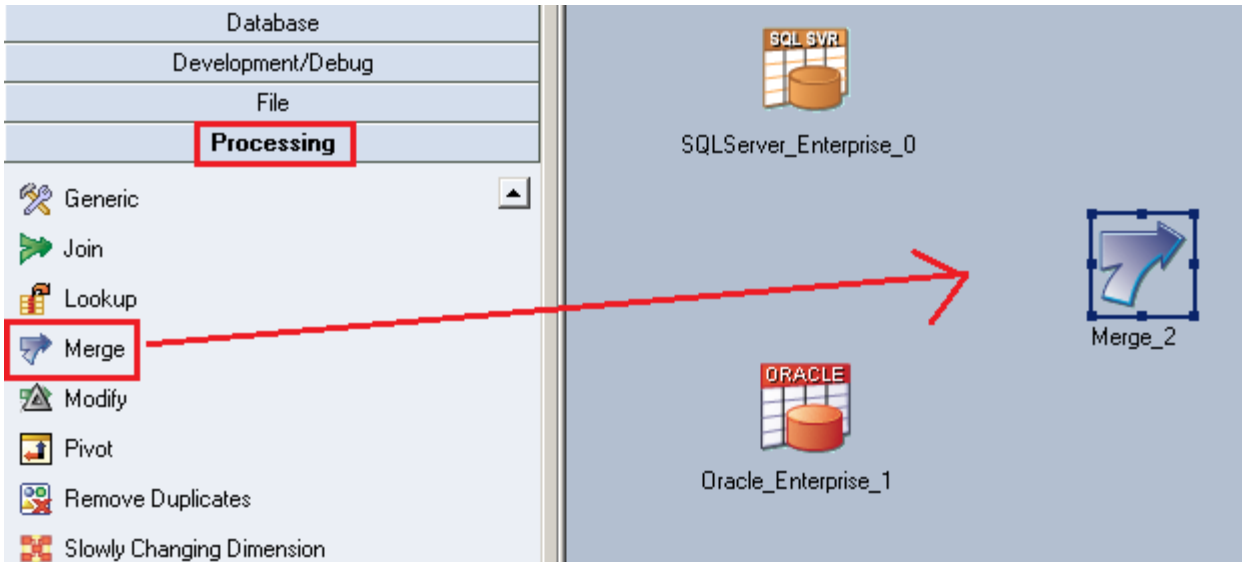
**Step-2 :-** New Window open than click Jobs than click Parallel because we use parallel jobs.



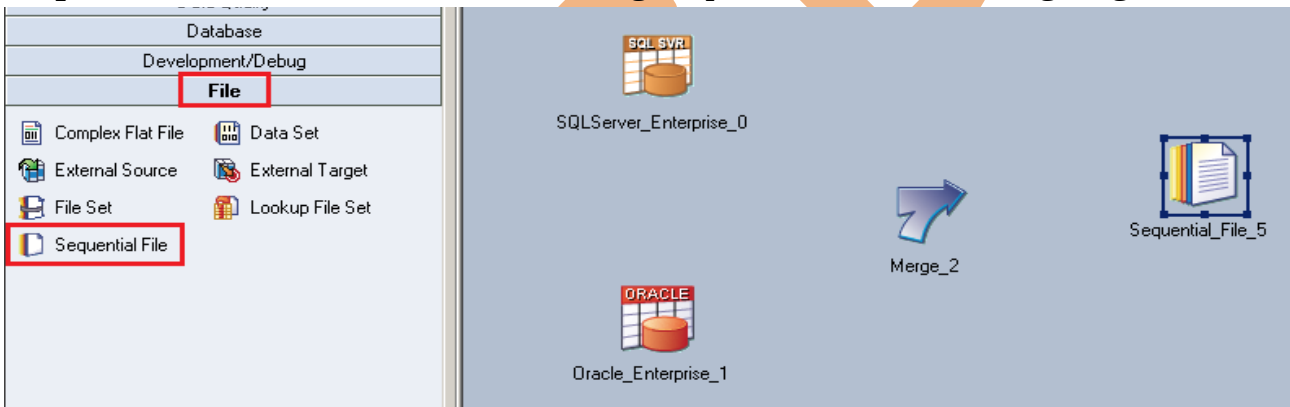
**Step-3 :-** First go on Processing Palette than scroll the cursor and choose SqlServer stage and oracle stage and drag them to Parallel Job



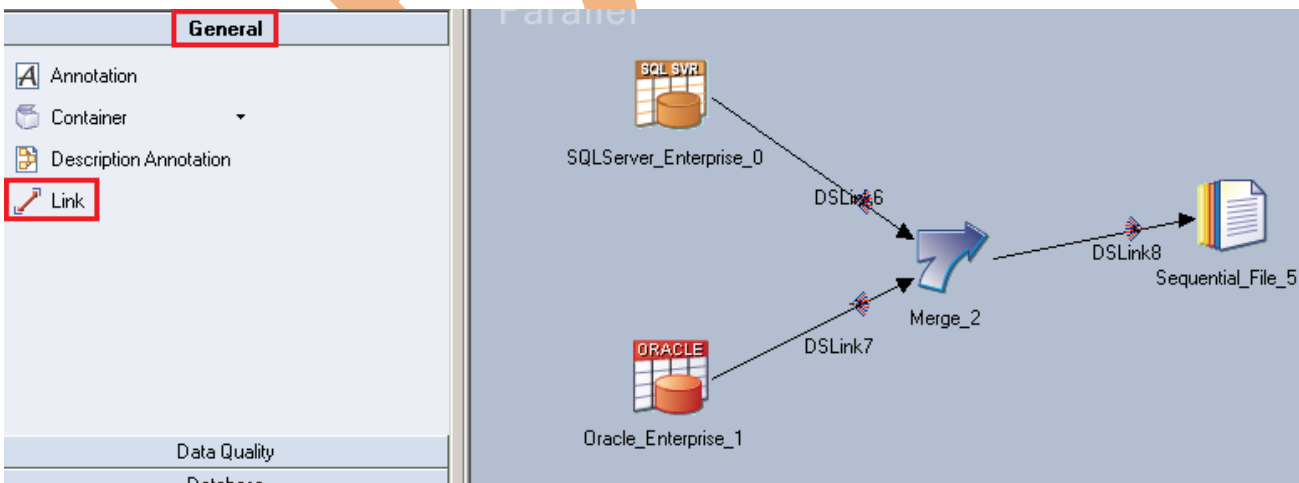
**Step-4 :-** . Choose Processing Palette for selecting Merge stage and drag and drop merge stage to parallel window. This merge stage used for merging the into data from RDBMS and load into Target.



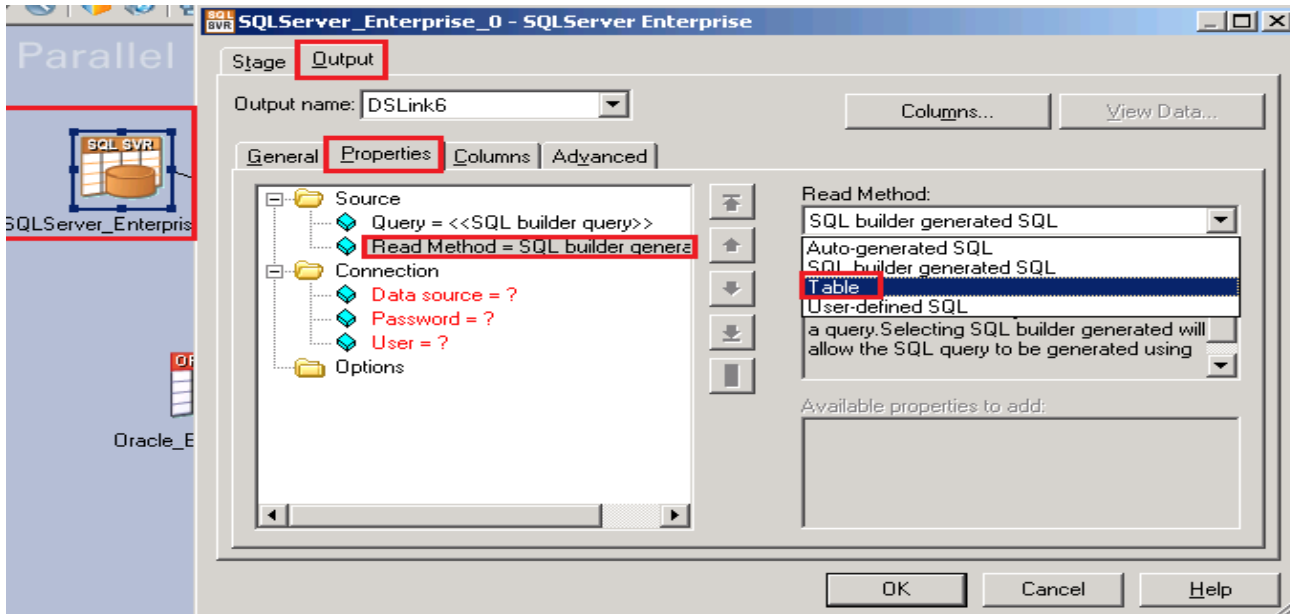
**Step-5 :-** Choose File Palette for selecting Sequential file for loading target data.



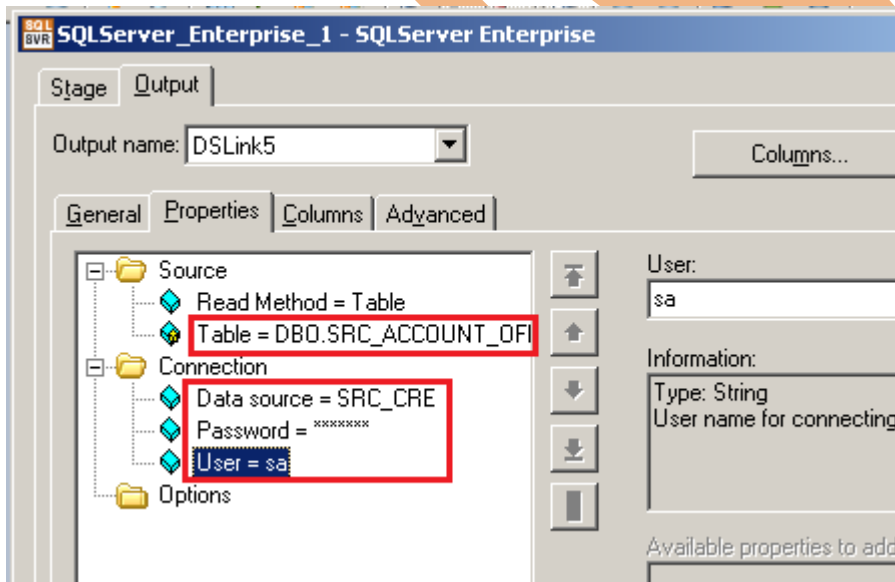
**Step-6 :** Go to General Palette and connect all the stages with Link (Drag and Drop) source to destination and shows like this.



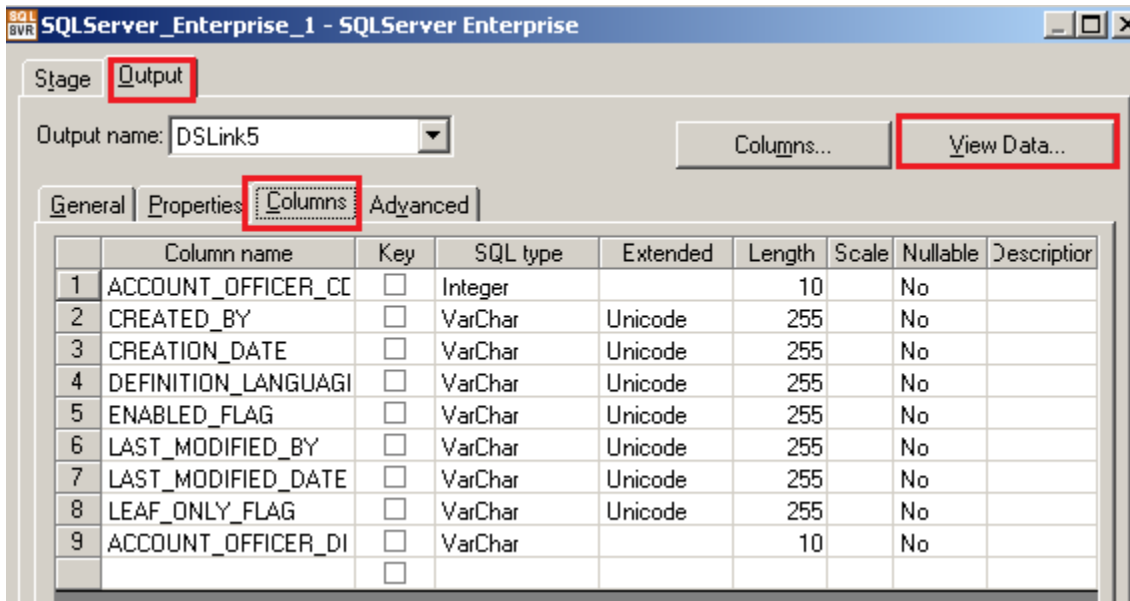
**Step-7:-** Double click on sql server stage and choose directly load table from database.



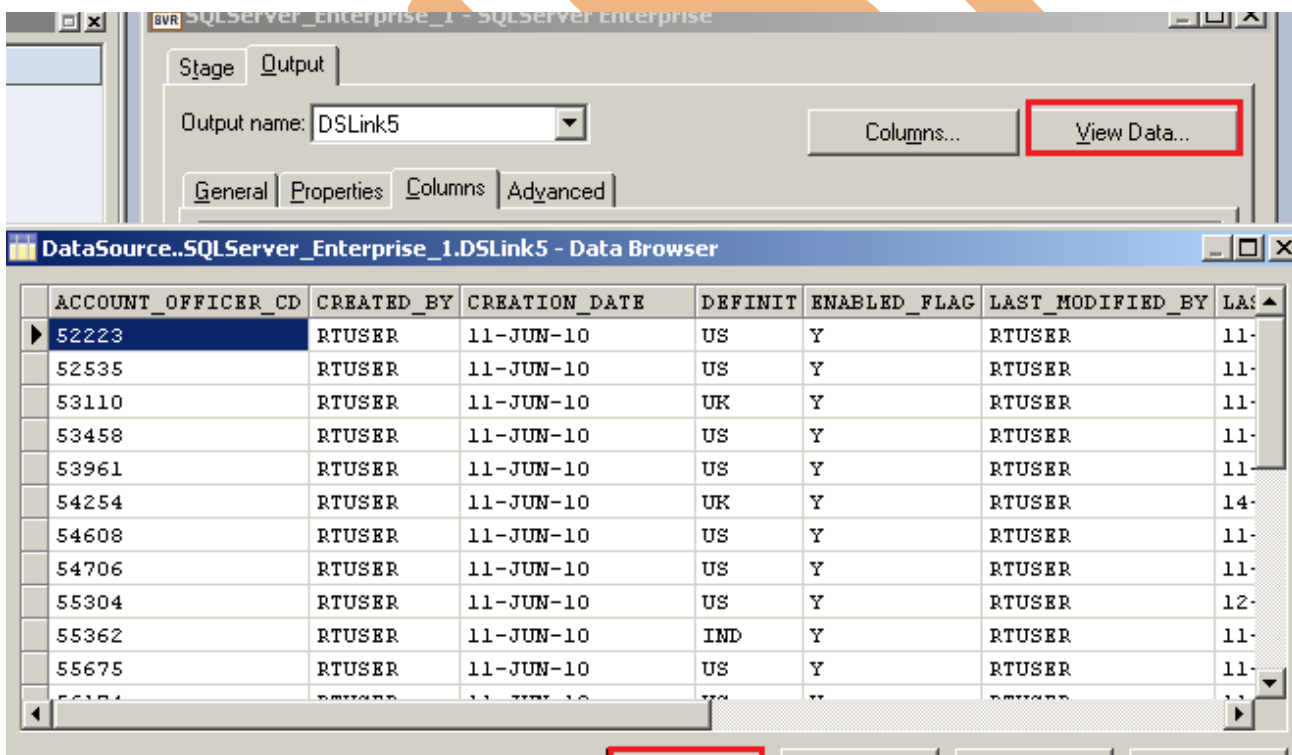
**Step-8 :-** Now specify your table name and credentials for accessing this table from database and specify your data source name as you mention in your ODBC connection.



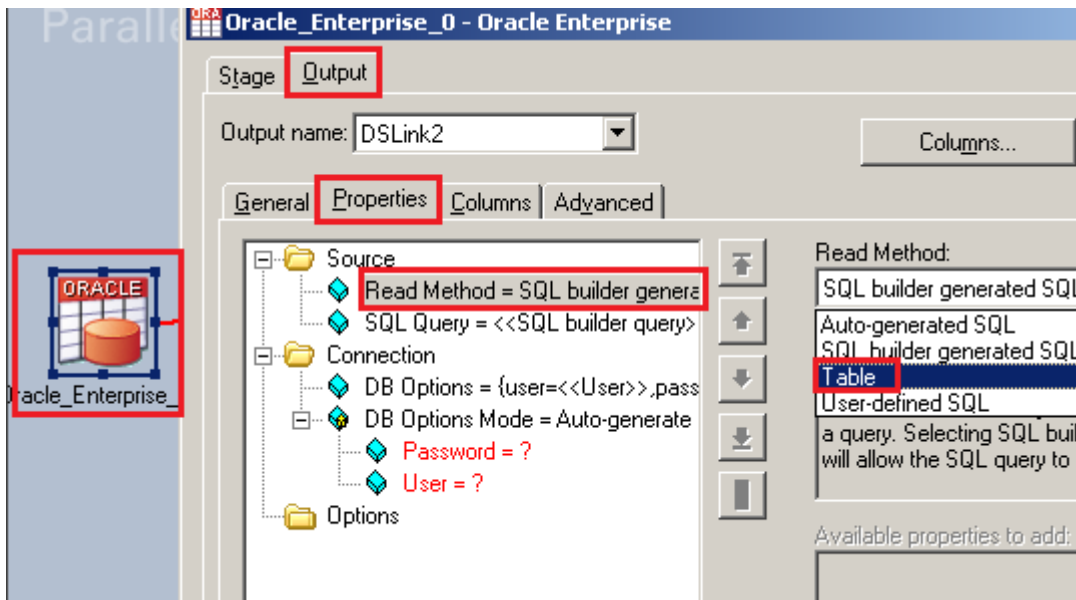
**Step-9 :-** Go to Columns tab and enter same column names as declared in Input file and put data type, length then click on View Data. This will show your Input Data.



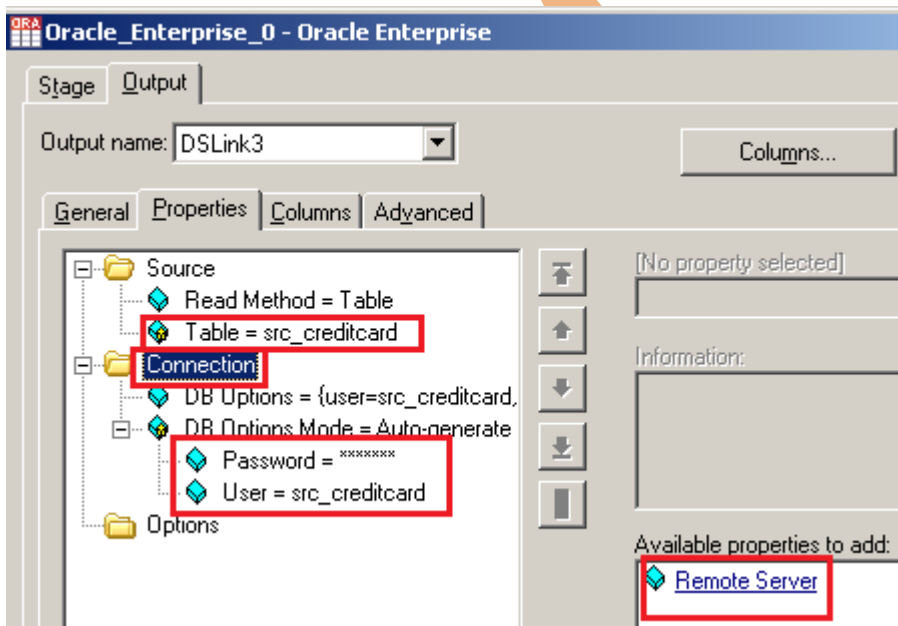
**Step-10:-** Now click on View Data and Ok. If your data is shown like this that means you have made successful connection between input table and DataStage otherwise it will give some error like column mismatch error.



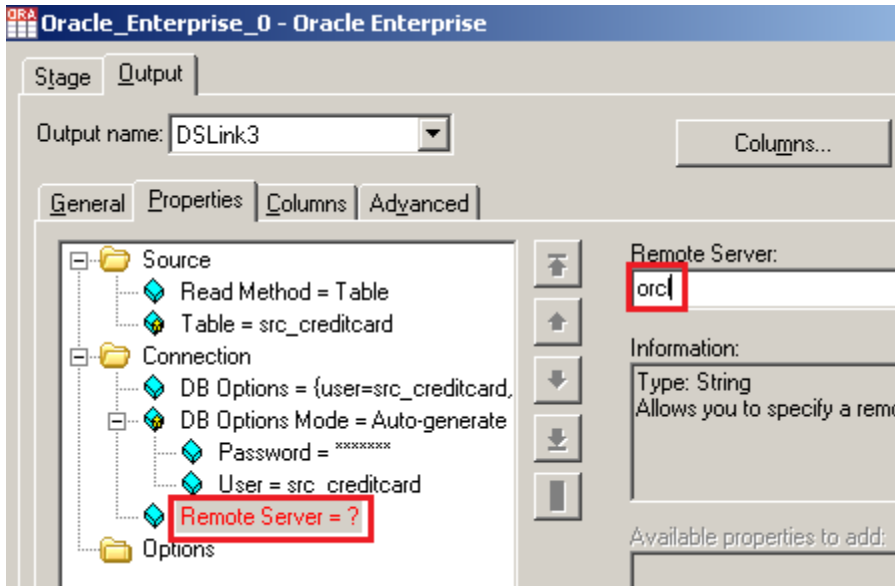
**Step-11:-** Double click on oracle stage and choose directly load table from database.



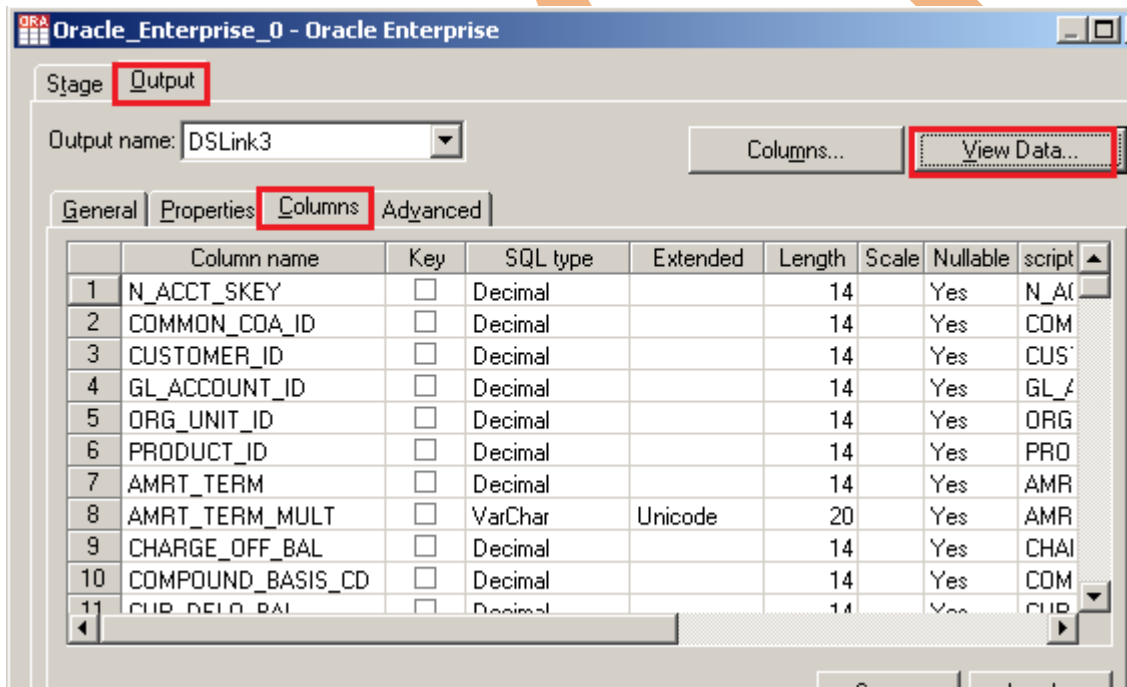
**Step-12:-** Now specify your table name and credentials for accessing this table from database.



**Step-13** There's one more option here once you click on connection tab then remote server options are popup then we have to specify our server name of oracle.



**Step-14:-** Go to Columns tab and enter same column names as declared in Input file and put data type, length then click on View Data. This will show your Input Data.



**Step-15:-** Now click on View Data and Ok. If your data is shown like this that means you have made successful connection between input table and DataStage otherwise it will give some error like column mismatch error.



N_ACCT_SKEY	COMMON_COA_ID	CUSTOMER_ID	GL_ACCOUNT_ID	ORG_UNIT_ID	PRODUCT_ID
00000000000000	0000070000056	0000000001234	0000000083400	0000000000150	0000000000000
00000000000000	0000070000056	0000000000123	0000000051130	0000000000150	0000000000060
00000000000000	0000070000055	0000000001234	0000000083400	0000000000150	0000000000060
00000000000000	0000070000056	0000000000012	0000000011100	0000000000150	0000000000060
00000000000000	0000070000056	0000000000123	0000000051130	0000000000150	0000000000060
00000000000000	0000070000055	0000000001234	0000000083400	0000000000150	0000000000060
00000000000000	0000070000056	0000000000012	0000000011100	0000000000150	0000000000060
00000000000000	0000070000056	0000000000012	0000000040120	0000000000100	0000000000090
00000000000000	0000070000056	0000000000123	0000000083400	0000000000100	0000000000000
00000000000000	0000070000056	0000000000012	0000000084613	0000000000100	0000000000000
00000000000000	0000070000056	0000000001234	0000000002712	0000000000100	0000000000000

**Step-16:-** Now open properties see its look like join stage, here also we have to choose here key column so select key column, this is for merging.

Stage: Merge\_13

General Properties Advanced Link Ordering NLS Locale

Merge Keys

- Key = ACCOUNT\_OFFICER\_CD
- Sort Order = Ascending

Options

- Unmatched Masters Mode = Keep
- Warn On Reject Updates = True
- Warn On Unmatched Masters = True

Key: ACCOUNT\_OFFICER\_CD

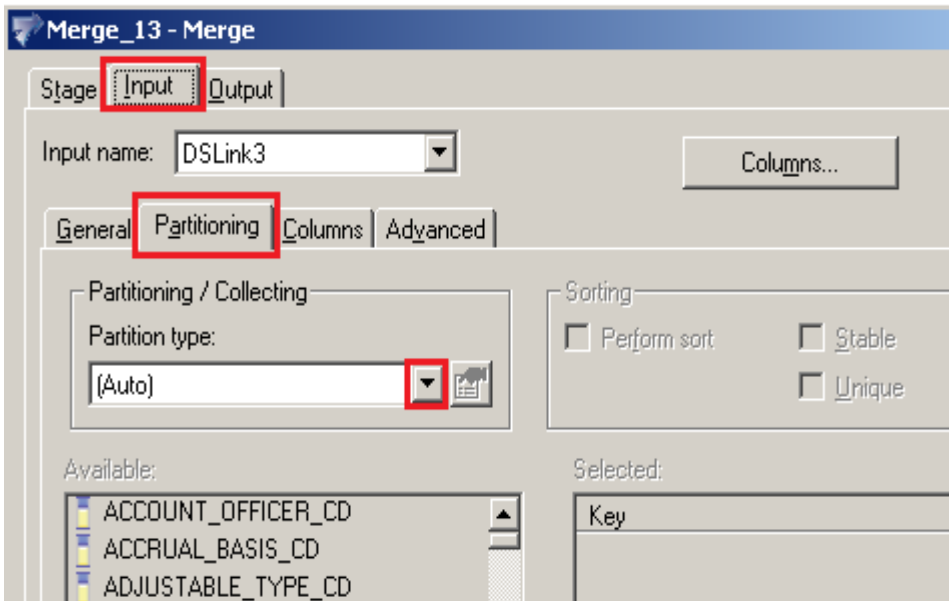
Information:

Type: Input Column  
Key column you are merging on.

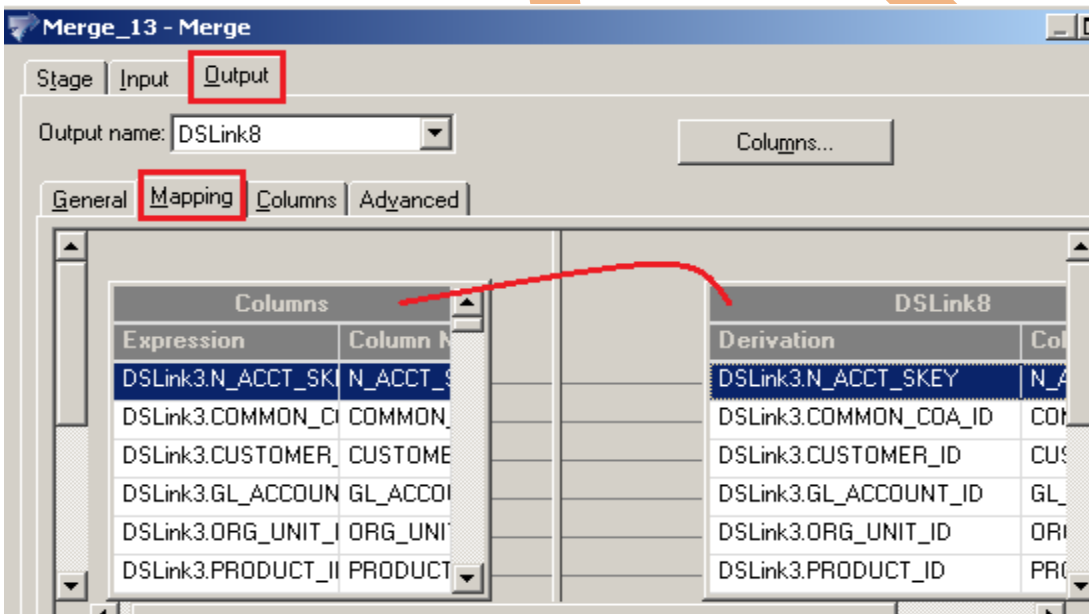
Available properties to add:

- Case Sensitive
- Nulls Position
- Sort As EBCDIC

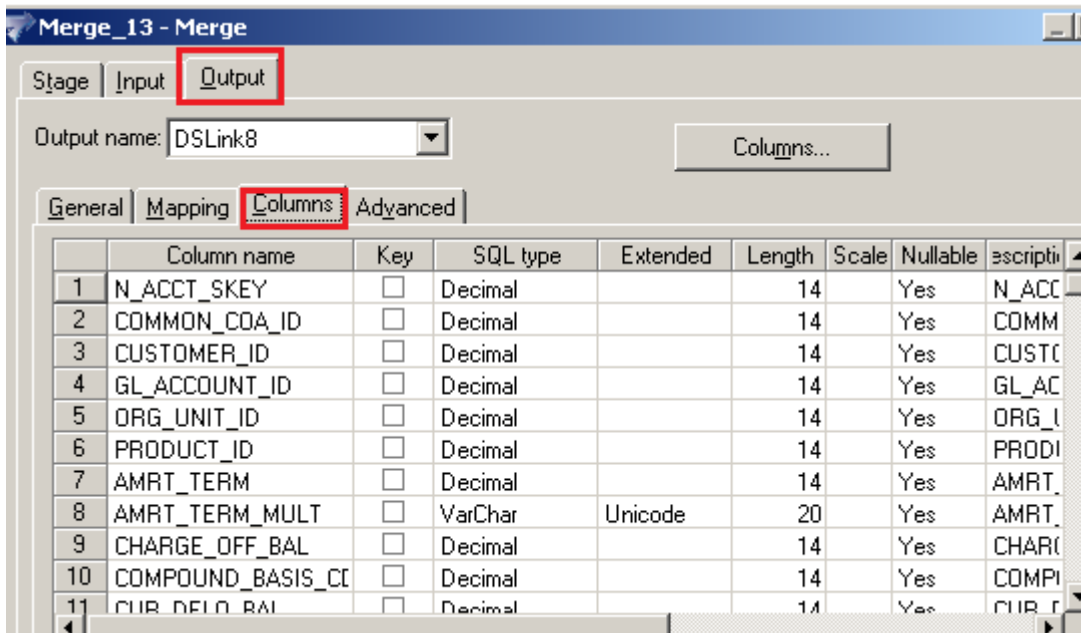
**Step-17:-** Here we specify partition as we choose auto partition technique with the help of this datastage automatically choose best partition technique for our job.



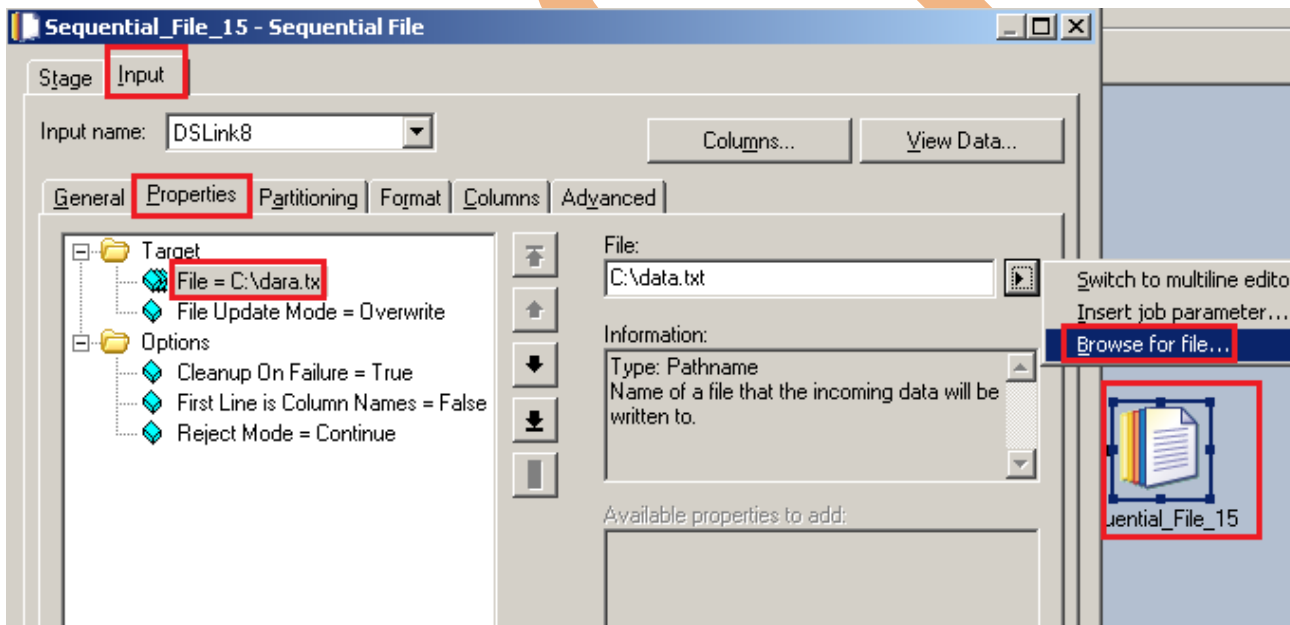
**Step-18:-** Now Go to output tab and create mapping, select all columns and drag and drop in output space.



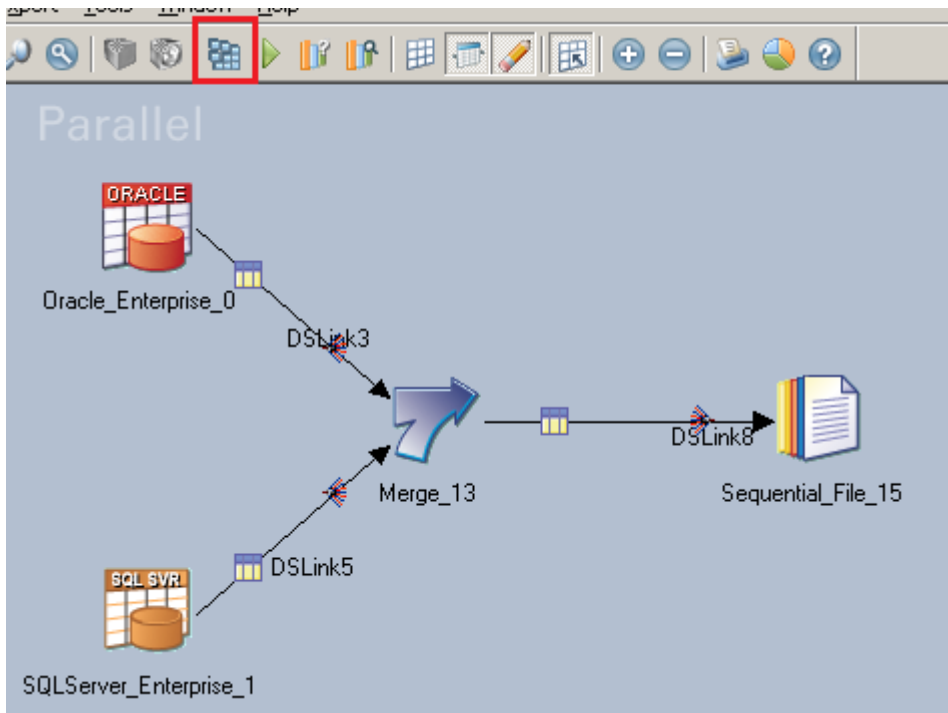
**Step-19:-** Now click on Column and see all the column are available in target or not and click OK.



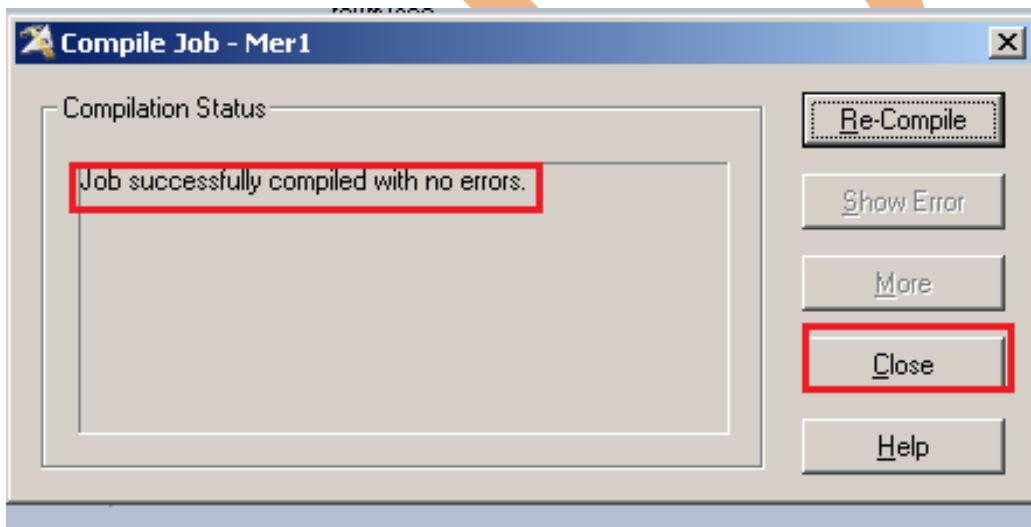
**Step-20:-** Now go to target file and specify the data file name.



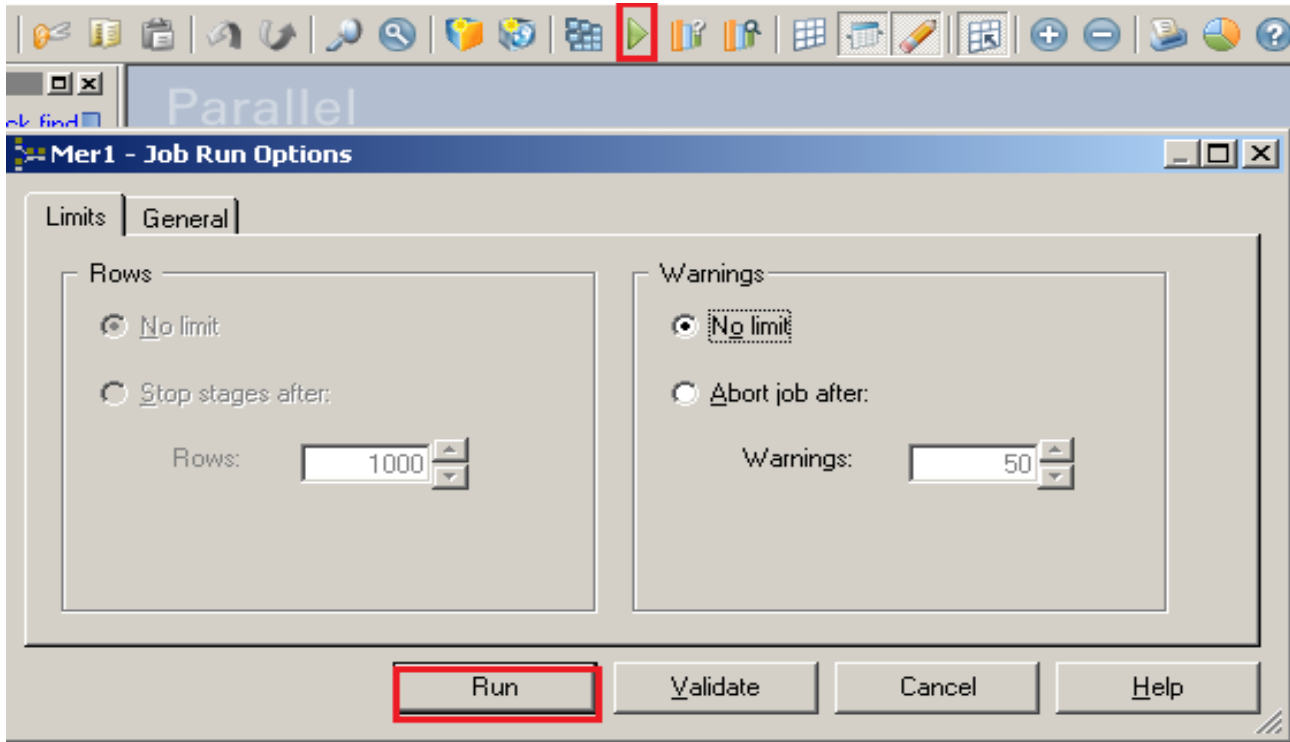
**Step-21:-** This shown like this and now click on button for compiling our job.



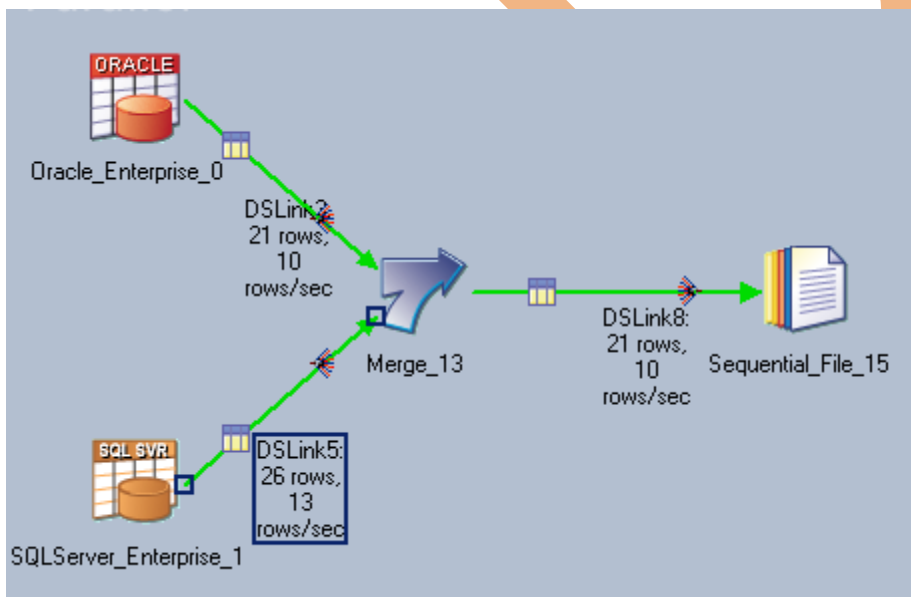
**Step-22:-** If this shown that means your compilation is done otherwise it shows error and now click on run button or (CTRL+F5).



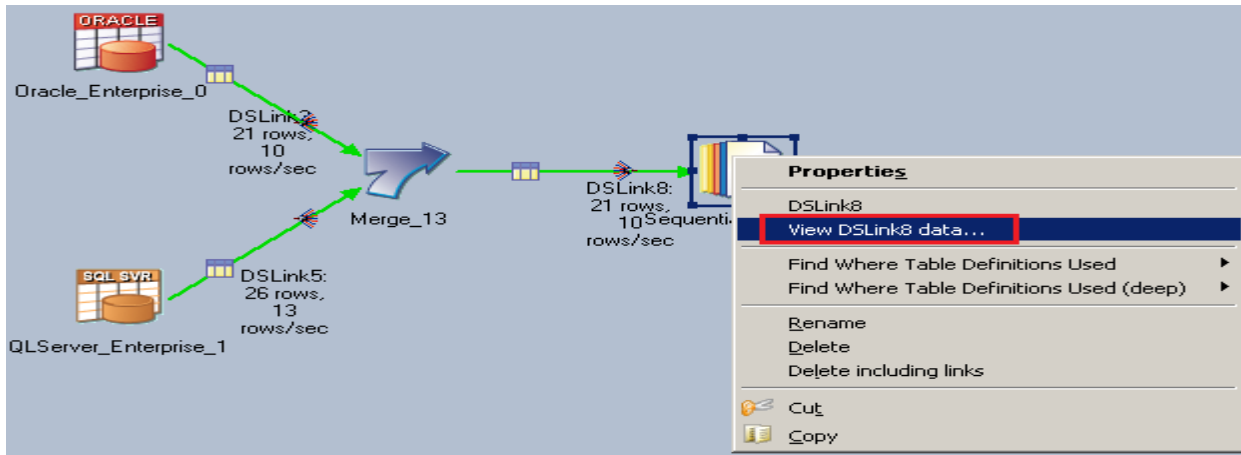
**Step-23:.** Now click on Run tab and notice some options available here. We have selected No limit of warnings and we can validate before run the job.



**Step-24:-** After click on run wait for a while than it shows GREEN line that means your transformation is successfully done otherwise if it shows RED Line that means not Done and BLUE Line means Under Process.



**Step-25:-**We can also see target data from datastage so just right click on target data and view data .



DataSource..Sequential\_File\_15.DSQLink8 - Data Browser

PRODUCT_ID	AMRT_TERM	AMRT_TERM_MULT	CHARGE_OFF_BAL	COMPOUND_BASIS_CD	CUR
0000000000600	0000000000006	1250	0000000001256	0000000000000.	000
0000000000600	0000000000006	1250	0000000001256	0000000000000.	000
0000000000987	0000000000001	10	0000000000054	00000000000001.	000
0000000000600	0000000000006	1250	0000000001256	0000000000000.	000
0000000000041	0000000000001	1350	0000000000099	0000000000000.	000
0000000000041	0000000000002	500	0000000000153	00000000000002.	000
0000000000041	0000000000001	1350	0000000000099	0000000000000.	000
0000000000050	0000000000002	803	0000000000234	0000000000000.	000
0000000000600	0000000000005	1200	0000000000002	00000000000003.	000
0000000000600	0000000000005	1200	0000000000002	00000000000003.	000
0000000000010	0000000000004	803	0000000000013	0000000000000.	000

