



Oracle Hyperion Essbase ASO common Questions and Answers

Description:

This document provides you some common question and their solution for Hyperion Essbase ASO cube. We provide complete Hyperion product suite training.

History:

Version	Description Change	Author	Publish Date
0.1	Initial Draft	Irshad Ahmad	25-May-2011
0.1	Review 1 st	Amit Sharma	25-May-2011

[Table of Contents.](#)

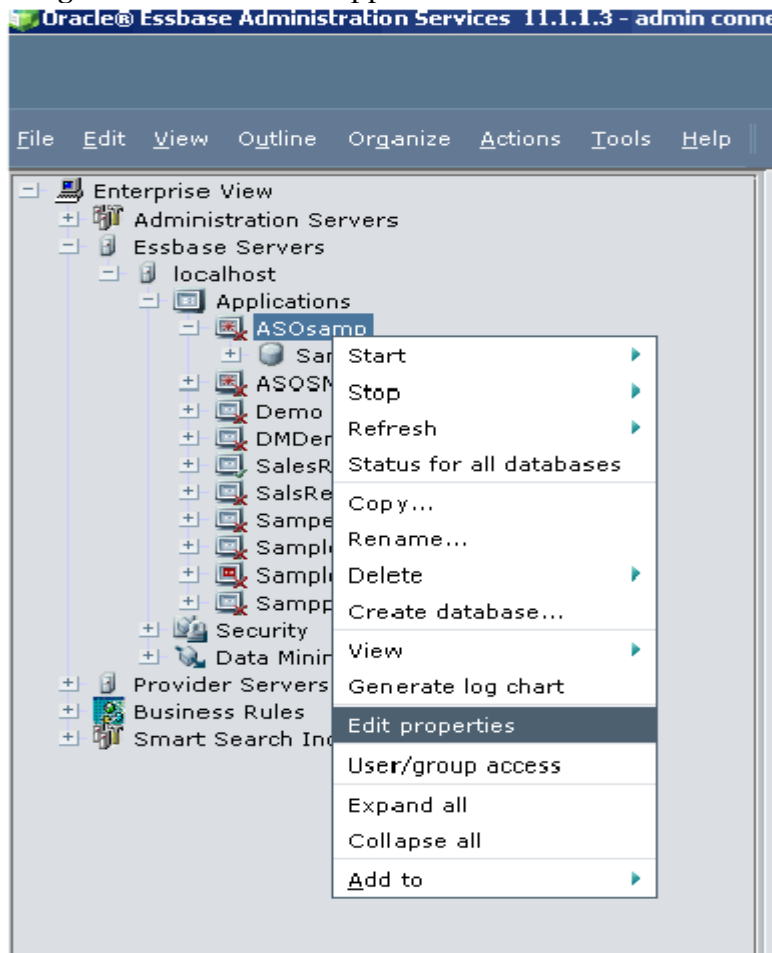
- i) **Problem#1: How to find the size of an Aggregate Storage (ASO) Database in Essbase.....1**
- ii) **Problem#2: How do you set the ASO Pending Cache Size Limit.....2**
- iii) **Problem#3: How To Automate The Aggregation Process On An Aggregate Storage (ASO) Database.....4**
- iv) **Problem#4: Unable to Compact an Aggregate Storage (ASO) Outline. May Get "Error compacting Outline.....5**
- v) **Problem#5: DataCopy Command not supported in ASO cube.....7**

Problem#2: How do you set the ASO Pending Cache Size Limit?

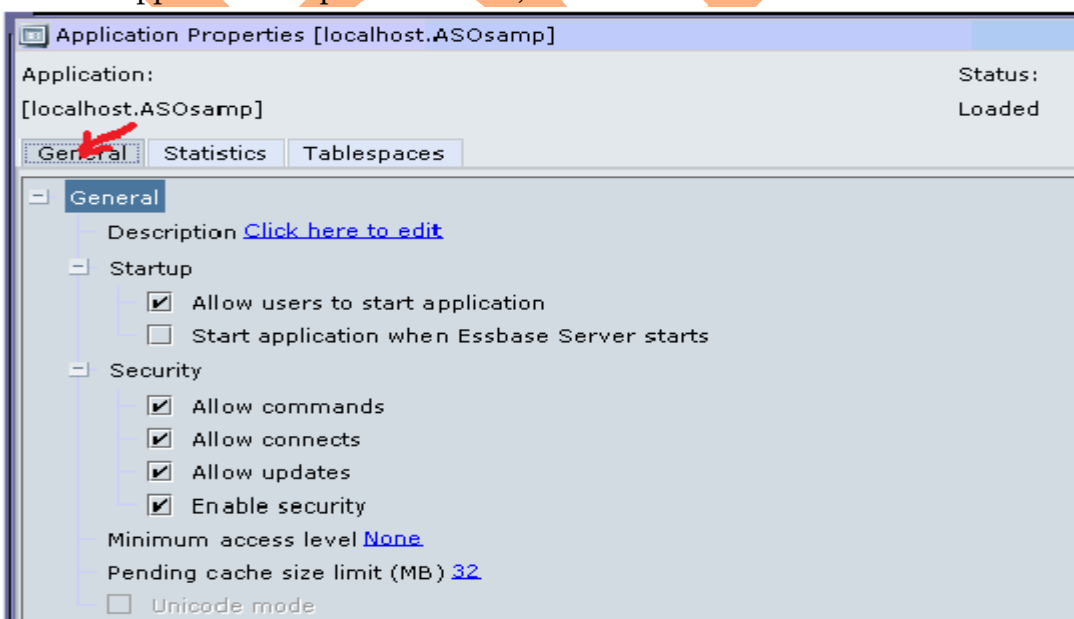
Solution You can set the ASO cache by doing the following from the Essbase Administration Services console:

To view or change the size of the aggregate storage cache:

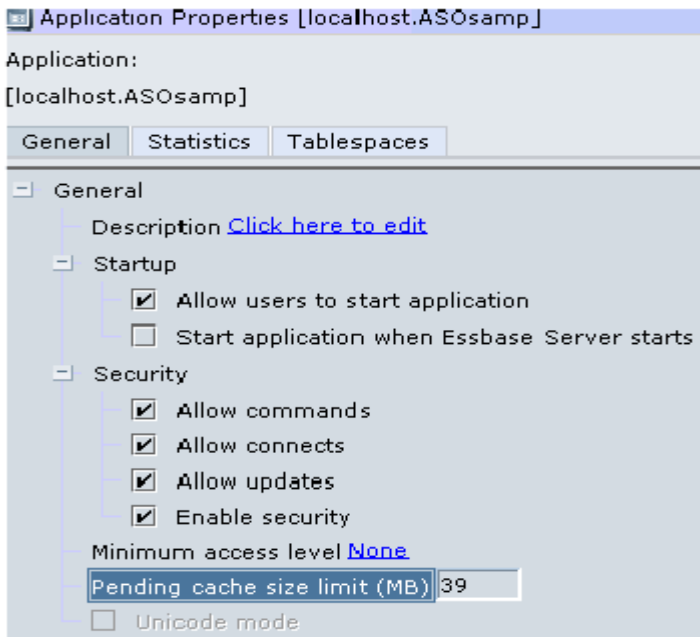
1. Right-click on the ASO Application in the EAS Console and select Edit properties.



2. In the Application Properties window, select the General tab.



3. Next to the Pending cache size limit node, enter a value, in megabytes, for the size of the cache.



4. Click Apply.

The cache setting takes effect after the application is restarted.

The Aggregate storage cache facilitates memory usage during data loads, aggregations, and retrievals.

The default cache size is 32 MB. You can use the size of input-level data to determine when to increase the maximum size for the cache.

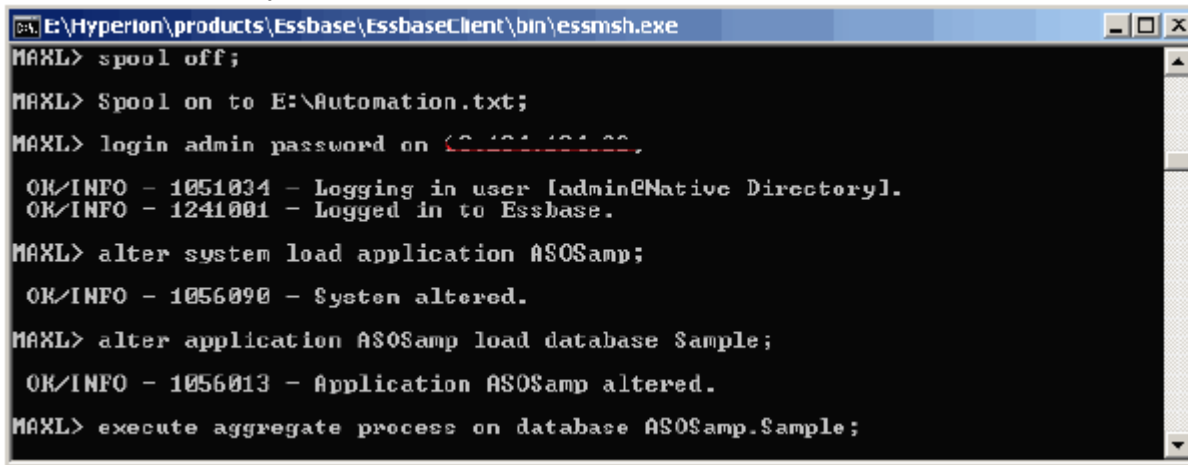
A 32 MB cache setting supports a database with approximately 2 GB of input-level data. If the input-level data size is greater than 2 GB by some factor, the aggregate storage cache can be increased by the square root of that factor. For example, if the input-level data size is 3 GB (which is 2 GB * 1.5), multiply the aggregate storage cache size of 32 MB by 1.22 (which is approximately the square root of 1.5), and set the aggregate cache size to the result: 39.04 MB.

Do not increase the maximum size of the aggregate storage cache beyond what is needed.

Problem#3: How to Automate The Aggregation Process On An Aggregate Storage (ASO) Database?

Solution You can use a MaxL Script to automate the aggregation process.

An Example of the syntax is:



```
E:\Hyperion\products\Essbase\EssbaseClient\bin\essmsh.exe
MAXL> spool off;
MAXL> Spool on to E:\Automation.txt;
MAXL> login admin password on (S:101/01/00),
OK/INFO - 1051034 - Logging in user [admin@Native Directory].
OK/INFO - 1241001 - Logged in to Essbase.
MAXL> alter system load application ASOSamp;
OK/INFO - 1056090 - System altered.
MAXL> alter application ASOSamp load database Sample;
OK/INFO - 1056013 - Application ASOSamp altered.
MAXL> execute aggregate process on database ASOSamp.Sample;
```

```
LOGIN "user" identified by "password" on "server";  
alter system load application "App1";  
alter application "App1" load database "Db1";  
execute aggregate process on database "App1"."Db1";  
EXIT;
```

```
MAXL> login admin password on ServerName;  
OK/INFO - 1051034 - Logging in user [admin@Native Directory].  
OK/INFO - 1241001 - Logged in to Essbase.
```

```
MAXL> alter system load application ASOSamp;  
OK/INFO - 1056090 - System altered.
```

```
MAXL> alter application ASOSamp load database Sample;  
OK/INFO - 1056013 - Application ASOSamp altered.
```

```
MAXL> execute aggregate process on database ASOSamp.Sample;
```

```
MAXL> execute aggregate process on database ASOSamp.Sample;  
OK/INFO - 1270045 - Successfully built [23] new aggregate views.
```

```
Elapsed time [8.69] sec.
```

```
OK/INFO - 1243014 - Aggregates processed on database ASOSamp.Sample.
```

```
MAXL> spool off;
```

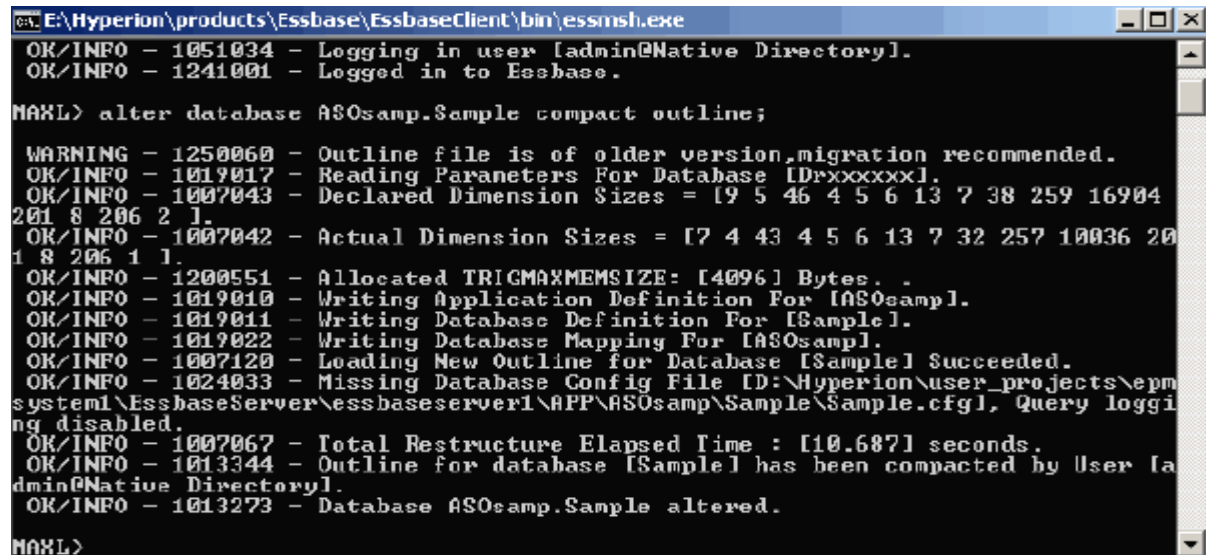
Problem#4: Unable to Compact an Aggregate Storage (ASO) Outline. May Get "Error compacting Outline

When deleting members from an ASO outline and restructuring the outline the outline file size grows. When trying to compact the outline using Essbase Administration Services (EAS) or MaxL, the outline does not compact completely.

You have tried to compact the outline by doing the following:

1. Using EAS to compact the outline, by right clicking on the outline and select Compact.
2. Using Maxl to compact the outline, by using the following command:

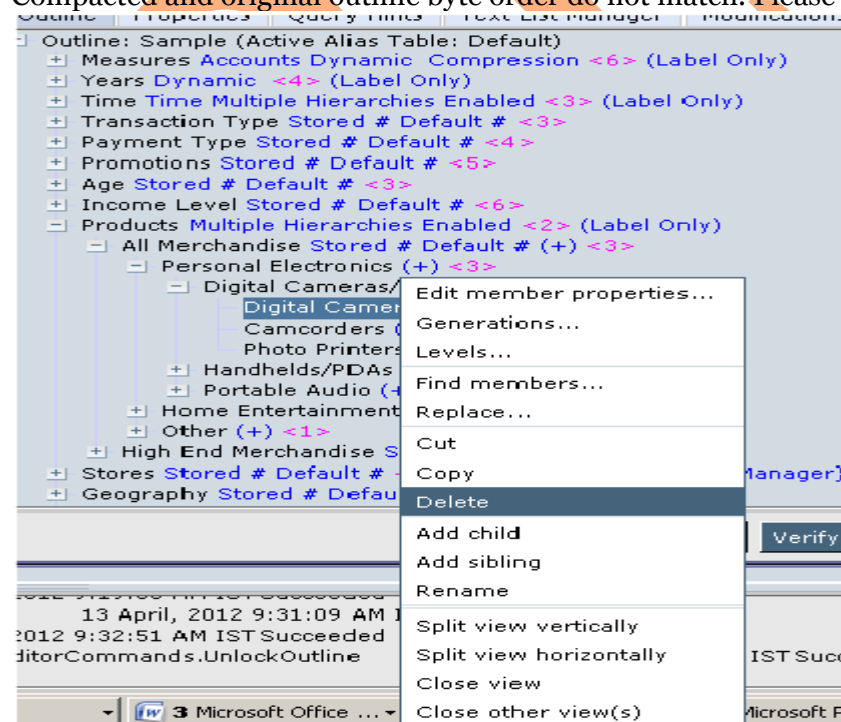
```
alter database appname.dbname compact outline;
```



```
OK/INFORM - 1051034 - Logging in user [admin@Native Directory].
OK/INFORM - 1241001 - Logged in to Essbase.
MAXL> alter database ASOsamp.Sample compact outline;
WARNING - 1250060 - Outline file is of older version,migration recommended.
OK/INFORM - 1019017 - Reading Parameters For Database [D:\xxxxxxx].
OK/INFORM - 1007043 - Declared Dimension Sizes = [9 5 46 4 5 6 13 7 38 259 16904
201 8 206 2 1.
OK/INFORM - 1007042 - Actual Dimension Sizes = [7 4 43 4 5 6 13 7 32 257 10036 20
1 8 206 1 1.
OK/INFORM - 1200551 - Allocated TRIGMAXMEMSIZE: [4096] Bytes.
OK/INFORM - 1019010 - Writing Application Definition For [ASOsamp].
OK/INFORM - 1019011 - Writing Database Definition For [Sample].
OK/INFORM - 1019022 - Writing Database Mapping For [ASOsamp].
OK/INFORM - 1007120 - Loading New Outline for Database [Sample] Succeeded.
OK/INFORM - 1024033 - Missing Database Config File [D:\Hyperion\user_projects\epm
system1\EssbaseServer\essbaseServer1\APP\ASOsamp\Sample\Sample.cfg], Query logging
disabled.
OK/INFORM - 1007067 - Total Restructure Elapsed Time : [10.687] seconds.
OK/INFORM - 1013344 - Outline for database [Sample] has been compacted by User [a
dmin@Native Directory].
OK/INFORM - 1013273 - Database ASOsamp.Sample altered.
MAXL>
```

You may also see the following error if the outline was built on a Windows machine and then saved onto a Unix Essbase Server:

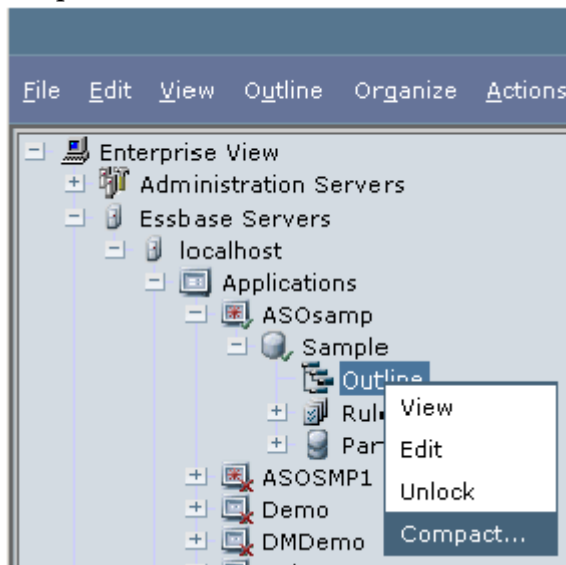
"Error compacting Outline Paging File //Hyperion/AnalyticServices/app/xxx/xxx/xxx.otl. Compacted and original outline byte order do not match. Please compact it where it was created."



Possible Reason

When an outline is opened in paged mode, an open-close sequence does nothing and deleting member leaves their space still used. The "compact outline" only removes growth caused by migration of the outline from an older version to a newer version. For example, if during the

migration each member grew with 4 bytes (like a new field in the member record), the new record will never fit where it came from and the outline would double in size. This growth (only) is being compacted.



Solution As a workaround you can use the EsscmdQ utility posted on the Oracle Technology Network.

1. Go to the following site and download the ESSCMDQ utility, and "aso_compact_outline".pdf.
2. Extract the utility to \$ARBORPATH/bin.

Below is an example of the ESSMCDQ script that you will need to create:

Note: For the Writeotl command, you need to point to a different location than the dbname folder. This will avoid overwriting the existing outline.

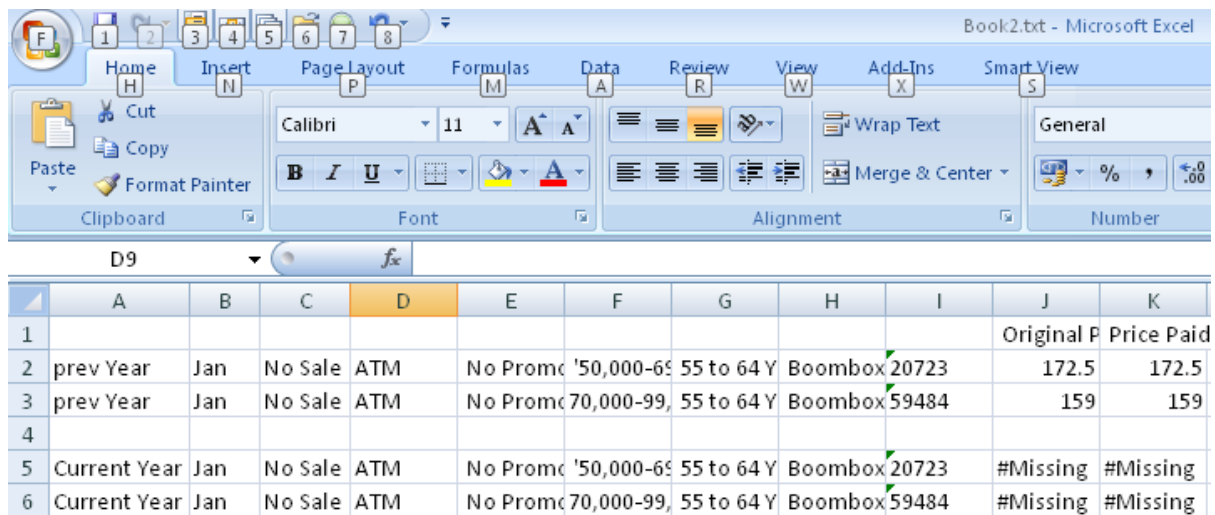
```

Login "servername" "username" "password" ;
Select "appname" "dbname" ;
Openotl 3 1 "Null" "Null"
"C:\Hyperion\products\Essbase\EssbaseServer\app\appname\dbname\dbname.otl" "y" "y" o ;

Writeotl o "3" 1 "Null" "Null"
"C:\Hyperion\products\Essbase\EssbaseServer\app\appname\dbname.otl" ;
CloseOtl o ;
Logout ;
  
```

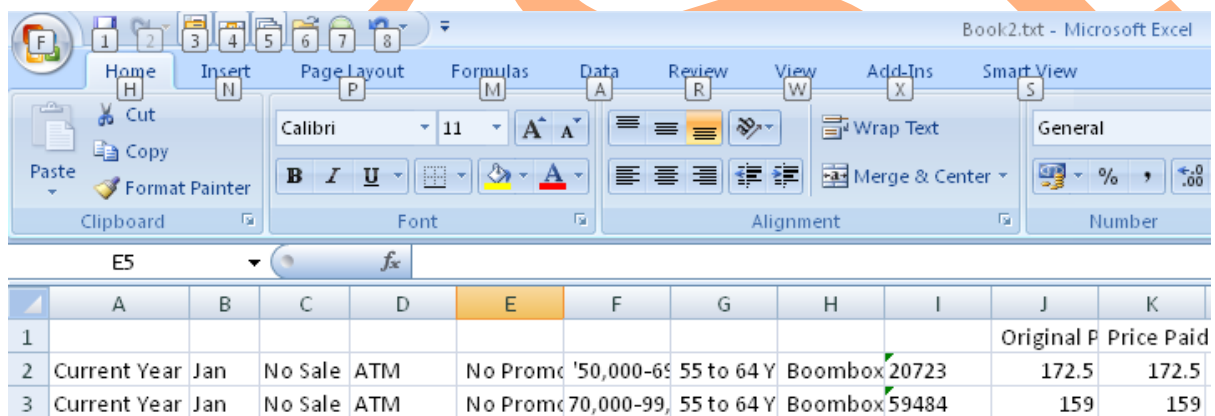

Problem#5: DataCopy Command not supported in ASO cube.

Solution: Alternate way to copy the data from one combination to another combination. Open the Excel sheet and connect to the application and retrieve the combination of data. I am trying to copy the previous year combination of the data to current year combination of the data, here is the attached retrieval.



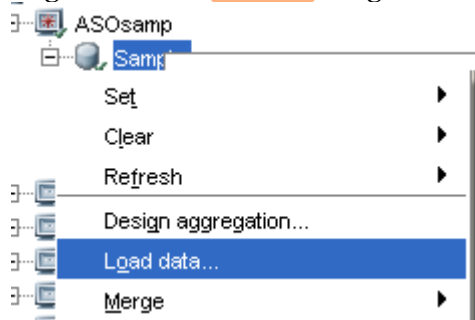
	A	B	C	D	E	F	G	H	I	J	K
1										Original P	Price Paid
2	prev Year	Jan	No Sale	ATM	No Promc	'50,000-65	55 to 64 Y	Boombbox	20723	172.5	172.5
3	prev Year	Jan	No Sale	ATM	No Promc	70,000-99,	55 to 64 Y	Boombbox	59484	159	159
4											
5	Current Year	Jan	No Sale	ATM	No Promc	'50,000-65	55 to 64 Y	Boombbox	20723	#Missing	#Missing
6	Current Year	Jan	No Sale	ATM	No Promc	70,000-99,	55 to 64 Y	Boombbox	59484	#Missing	#Missing

Rename Prev Year to Current Year and save the file in text format

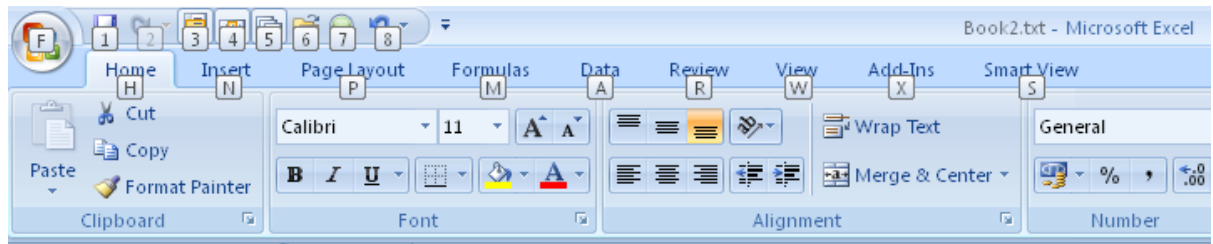


	A	B	C	D	E	F	G	H	I	J	K
1										Original P	Price Paid
2	Current Year	Jan	No Sale	ATM	No Promc	'50,000-65	55 to 64 Y	Boombbox	20723	172.5	172.5
3	Current Year	Jan	No Sale	ATM	No Promc	70,000-99,	55 to 64 Y	Boombbox	59484	159	159

Login to the EAS Console right click on the database and click on Load data



After Loading the data you will get the same values for Prev Year and Current Year as well.



	A	B	C	D	E	F	G	H	I	J	K
1										Original P	Price Paid
2	Current Year	Jan	No Sale	ATM	No Promc	'50,000-65	55 to 64 Y	Boombox	20723	172.5	172.5
3	Current Year	Jan	No Sale	ATM	No Promc	70,000-99,	55 to 64 Y	Boombox	59484	159	159
4											
5	Prev Year	Jan	No Sale	ATM	No Promc	'50,000-65	55 to 64 Y	Boombox	20723	172.5	172.5
6	Prev Year	Jan	No Sale	ATM	No Promc	70,000-99,	55 to 64 Y	Boombox	59484	159	159