



Informatica Power Center 9.0.1

Informatica Working with Parameter File

Informatica Lab #28

Description:

BISP is committed to provide BEST learning material to the beginners and advance learners. In the same series, we have prepared a complete end-to end Hands-on Guide for building financial data model in Informatica. The document focuses on how the real world requirement should be interpreted. The mapping document template with very simplified steps and screen shots makes the complete learning so easy. The document show how to use parameter file with variables. **Join our professional training program and learn from experts.**

History:

Version	Description Change	Author	Publish Date
0.1	Initial Draft	Upendra Upadhyay	12th Aug 2011
0.1	Review#1	Amit Sharma	18 th Aug 2011

Contents

Contents..... 2



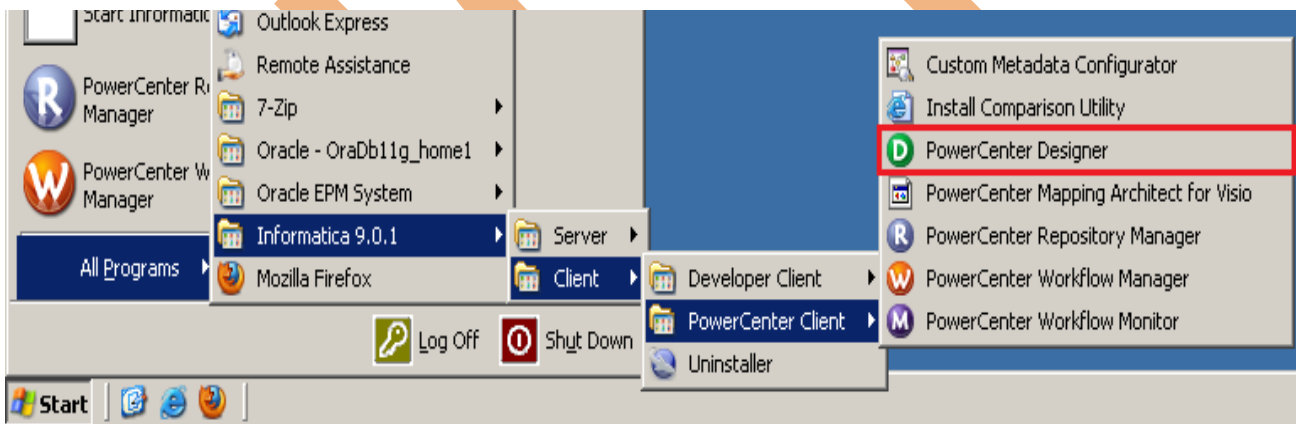
Informatica Parameter File

A mapping parameter represents a constant value that we can define before running a session. A mapping parameter retains the same value throughout the entire session.

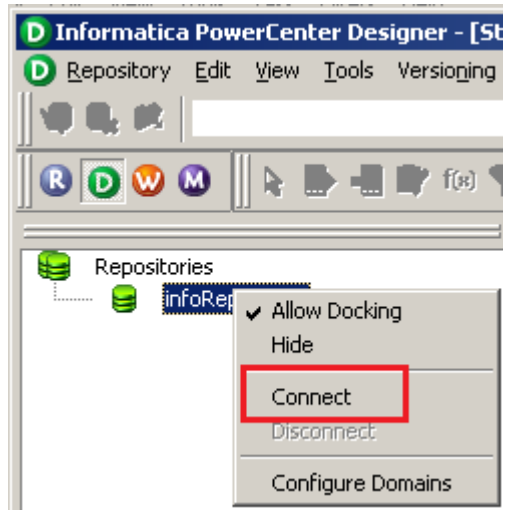
Parameter file is a text file that contains parameters and variables which can be referenced in Sessions and Workflows. Multiple Session and Workflows can share the same parameter file by logically grouping the Parameter file as mentioned below.

Informatica parameter file is a text file which contains Parameter values and Variable values for mapping, session and workflows. Broadly it keeps the properties of workflows, sessions and mappings. Here few usage of Informatica parameter file which can provide some insight of its need.

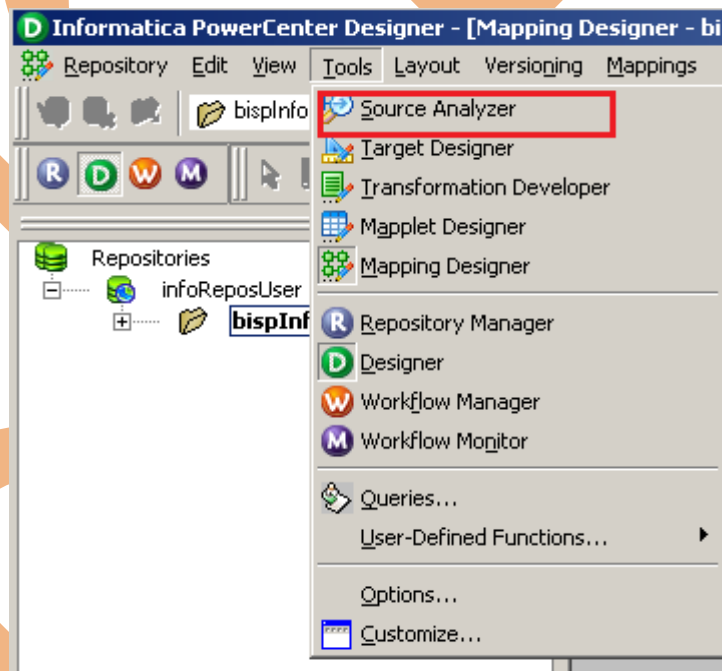
Step-1 Click on Start -> All Programs -> Informatica 9.0.1 -> Client -> Power Center Client -> Power Center Designer..

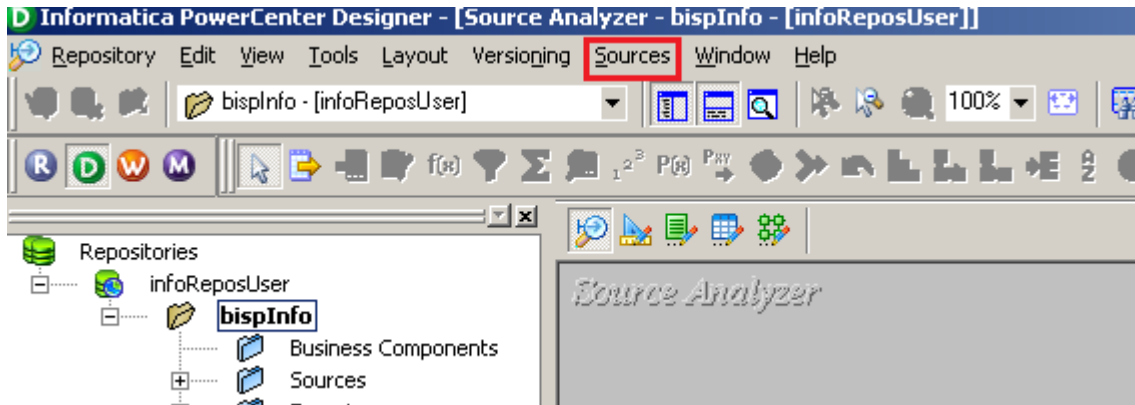


Step-2 Then Connect to Repository in Informatica Power Center Designer Right click on repository name and click on Connect.

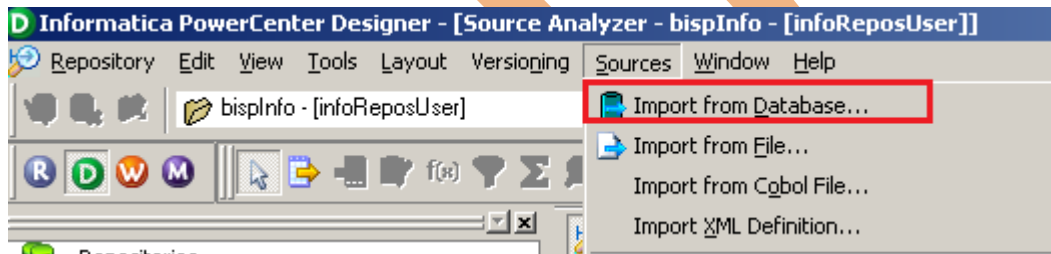


Step-3 Go to Tools Menu and click on Source Analyzer to import source table. And then go to Sources Menu in Informatica Power Center Designer.

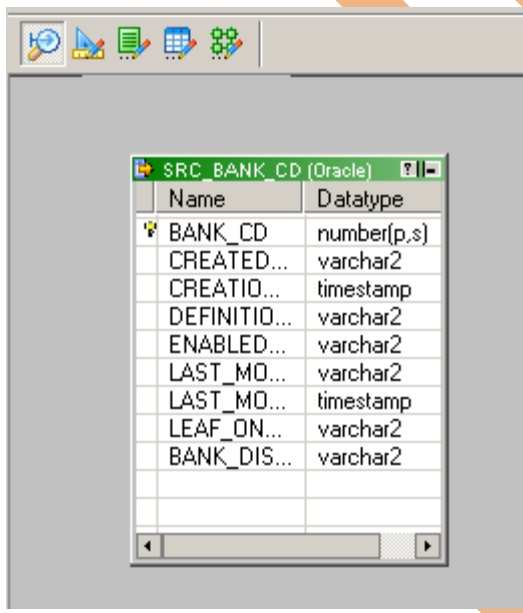
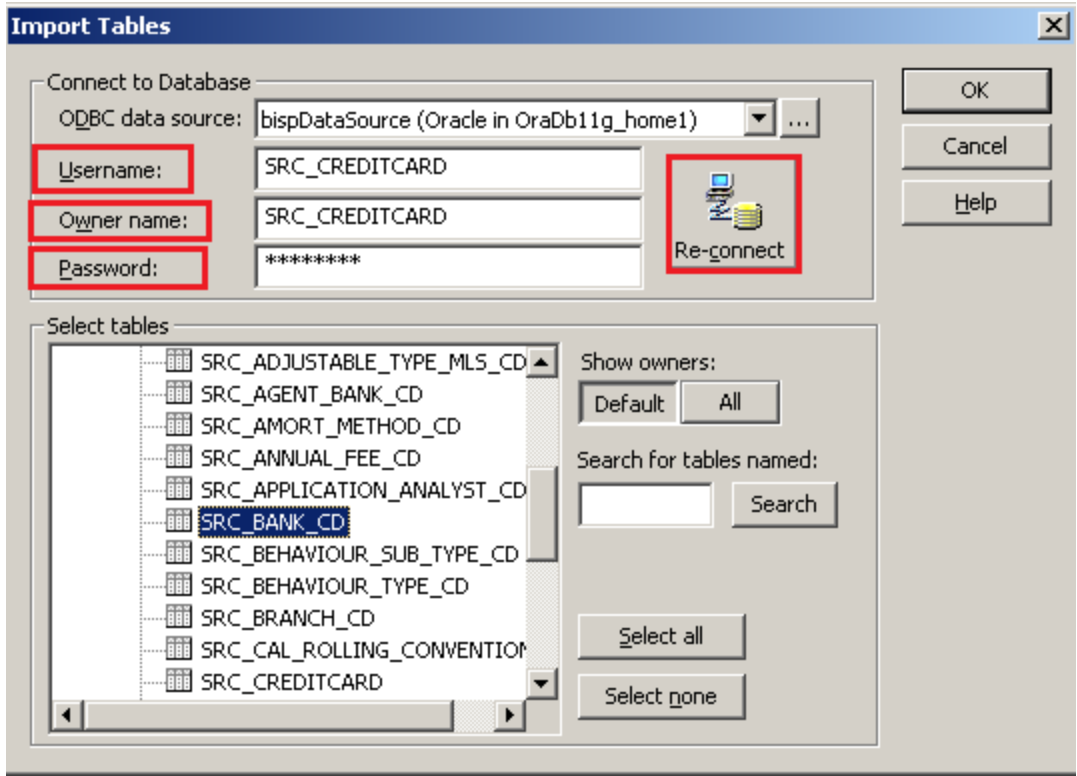




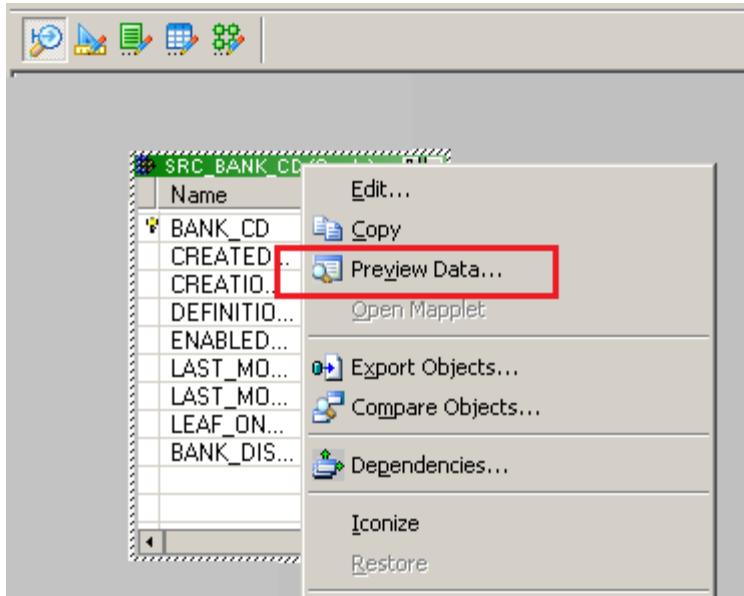
Step-4 And then select Source menu and click on Import from database



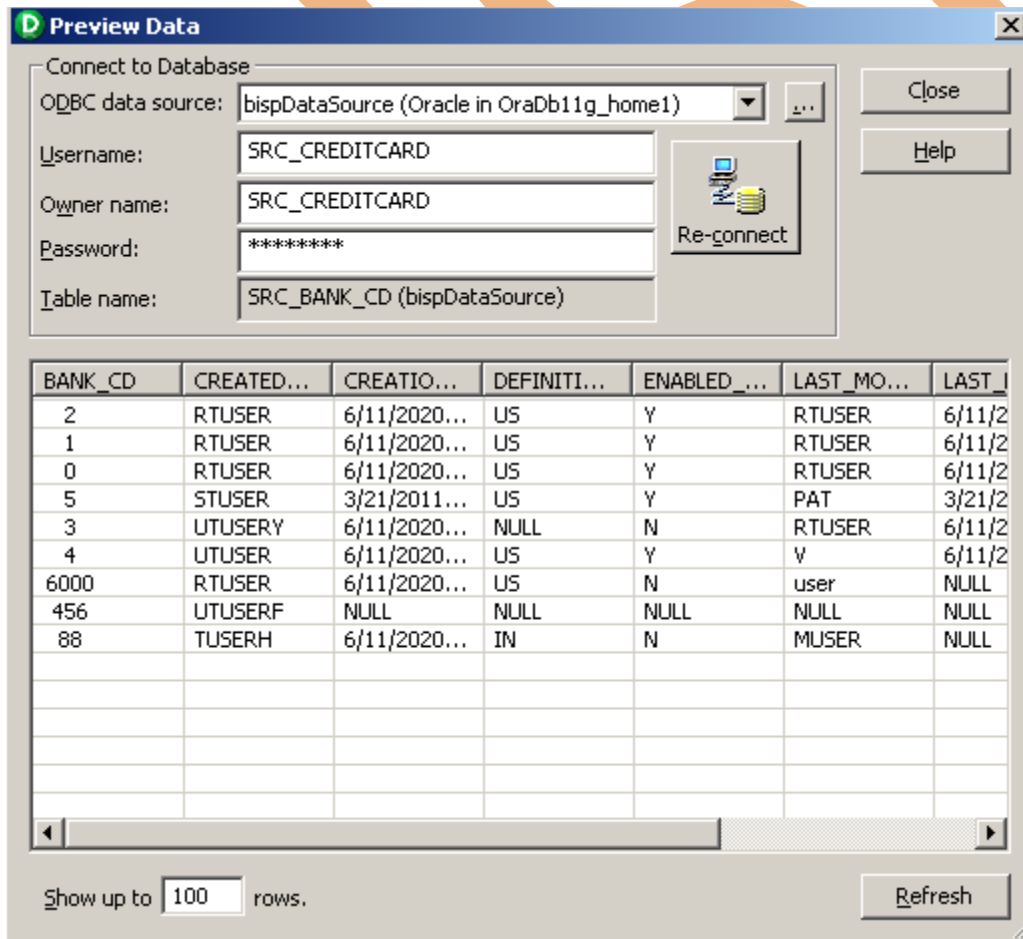
Step-5 Specify Username, Owner name, password and then connect. Then select source table and click OK.



Step-6 View data in source analyzer, Right click on STORE_DATA and select Preview Data.

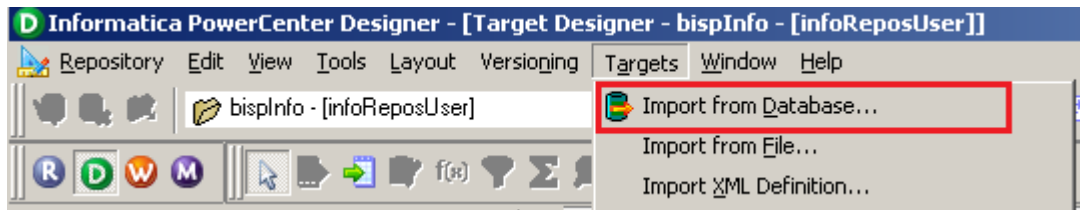


Step-7 Specify Username and Password and connect it. Then Close it.

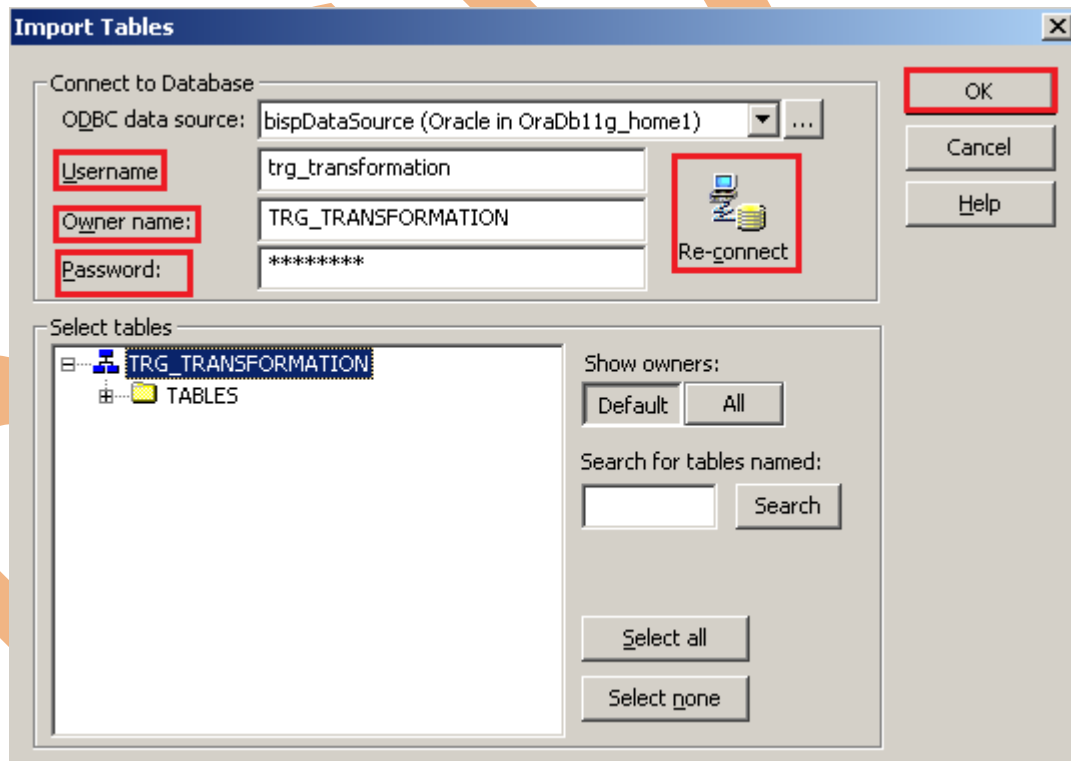


Step-8 Now click on Target Designer.

Step-9 And then select Target menu and click on Import from database to import target table.



Step-10 Specify Username, Owner name, password and then click on connect and then select table and then OK.



K...	Name	Datatype
P...	BANK_CD	number(p
N...	CREATED_BY	varchar2
N...	CREATION_DA...	timestam
N...	DEFINITION_L...	varchar2
N...	ENABLED_FLAG	varchar2
N...	LAST_MODIFIE...	varchar2
N...	LAST_MODIFIE...	timestam
N...	LEAF_ONLY_FL...	varchar2
N...	BANK_DISPLA...	varchar2

Step-11 Now create mapping for Parameter File Test.

Mapping Name

New Mapping name:

m_ParameterFileTest

OK

Cancel

Step-12 Drag and drop source table and target table into Mapping Designer window.

m_Informatica_ParameterFileTest

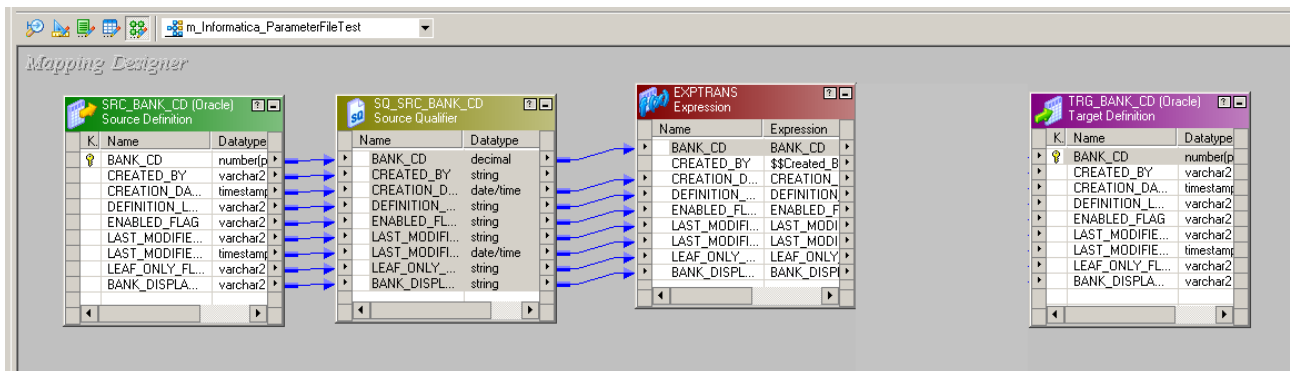
Mapping Designer

K...	Name	Datatype
P...	BANK_CD	number(p
N...	CREATED_BY	varchar2
N...	CREATION_DA...	timestam
N...	DEFINITION_L...	varchar2
N...	ENABLED_FLAG	varchar2
N...	LAST_MODIFIE...	varchar2
N...	LAST_MODIFIE...	timestam
N...	LEAF_ONLY_FL...	varchar2
N...	BANK_DISPLA...	varchar2

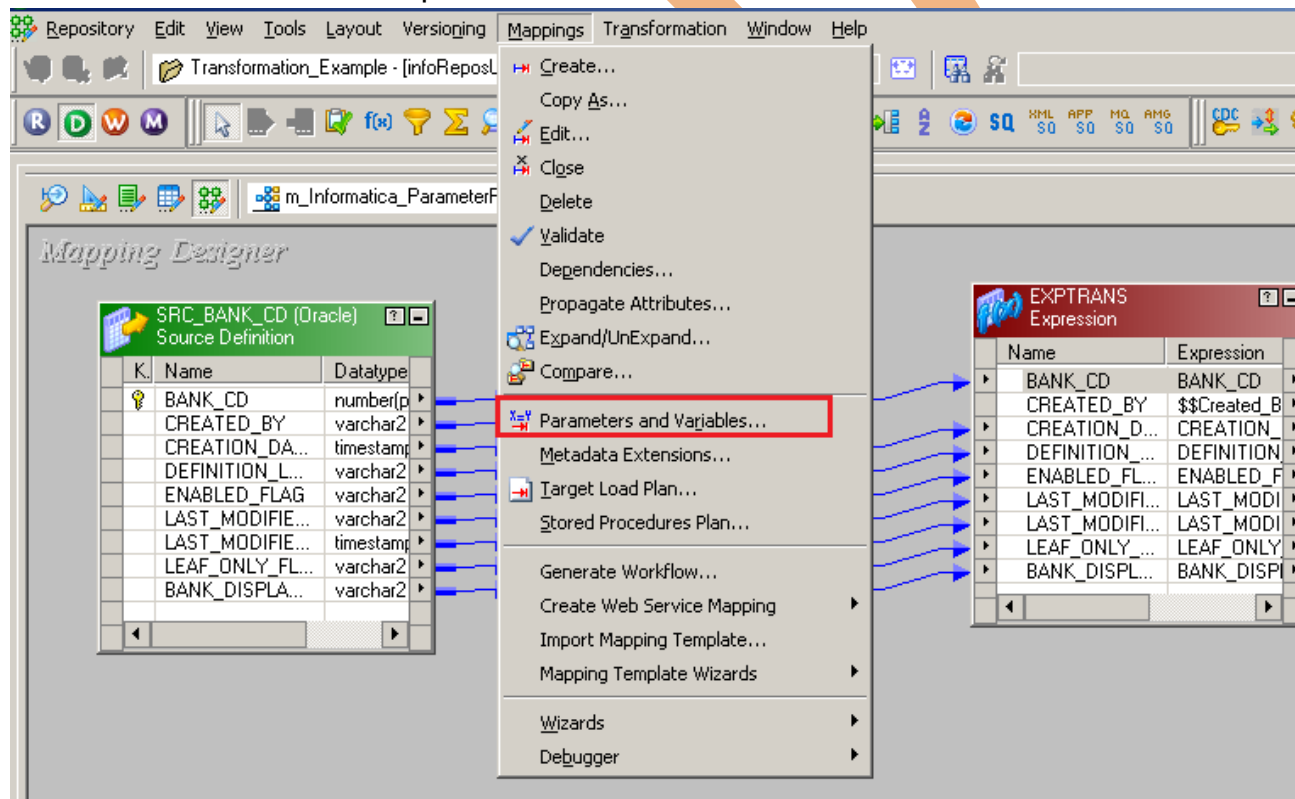
K...	Name	Datatype
P...	BANK_CD	decimal
N...	CREATED_BY	string
N...	CREATION_D...	date/time
N...	DEFINITION_...	string
N...	ENABLED_FL...	string
N...	LAST_MODIFI...	string
N...	LAST_MODIFI...	date/time
N...	LEAF_ONLY_...	string
N...	BANK_DISPL...	string

K...	Name	Datatype
P...	BANK_CD	number(p
N...	CREATED_BY	varchar2
N...	CREATION_DA...	timestam
N...	DEFINITION_L...	varchar2
N...	ENABLED_FLAG	varchar2
N...	LAST_MODIFIE...	varchar2
N...	LAST_MODIFIE...	timestam
N...	LEAF_ONLY_FL...	varchar2
N...	BANK_DISPLA...	varchar2

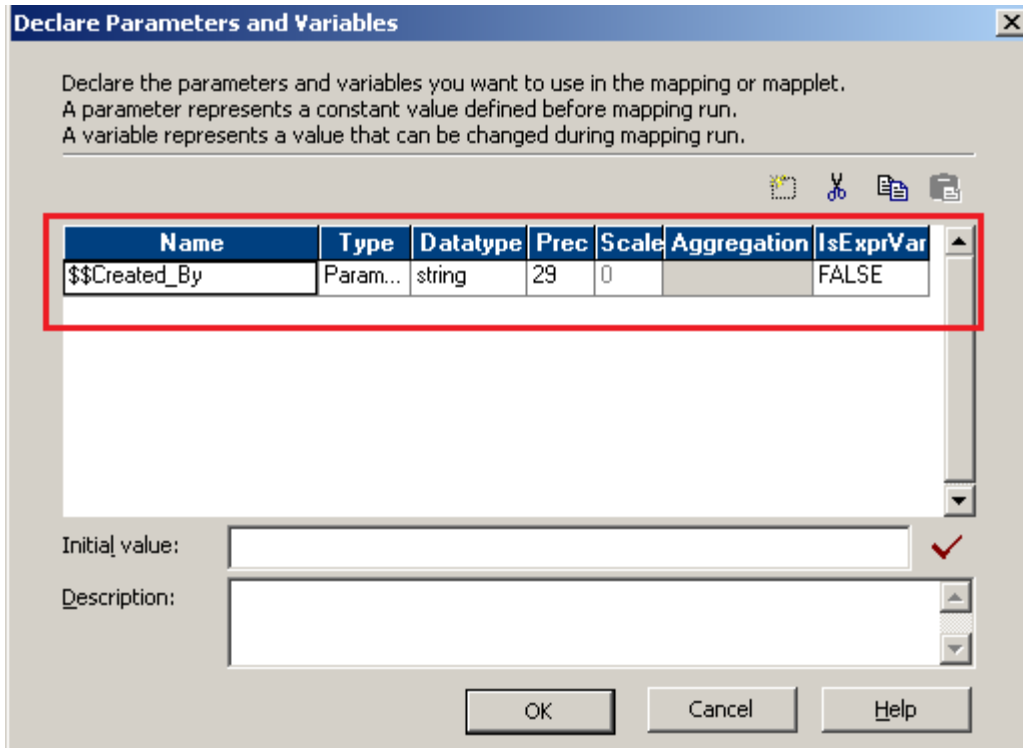
Step-13 Now create, Expression transformation and passes all SQ transformation column into Expression transformation table.



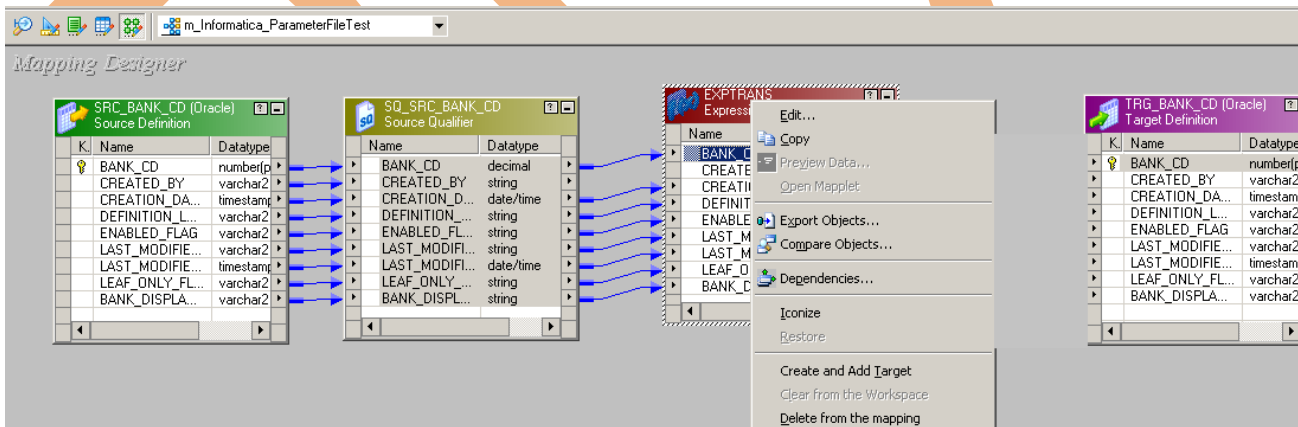
Step-14 Now create Parameter, So click on Mapping menu and click on Parameter and Variable options.



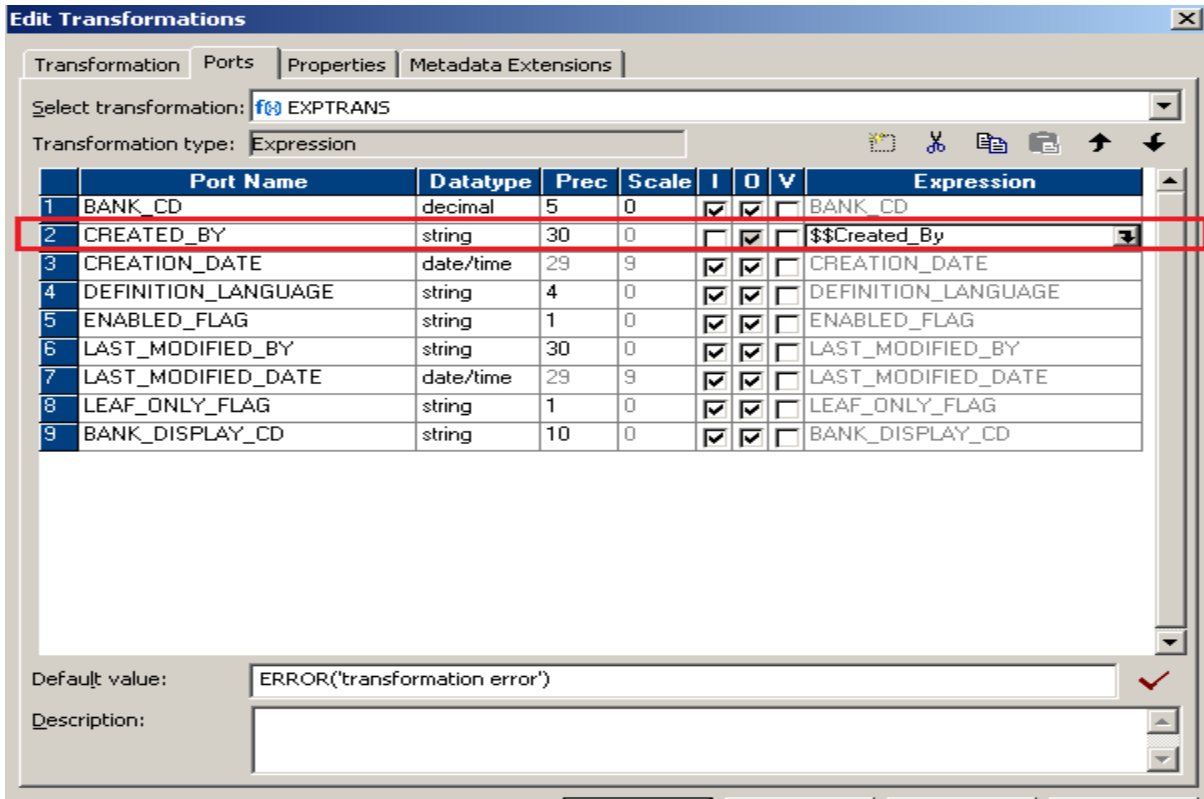
Step-15 Now add parameter and give its name and specify data type and then click on OK button.



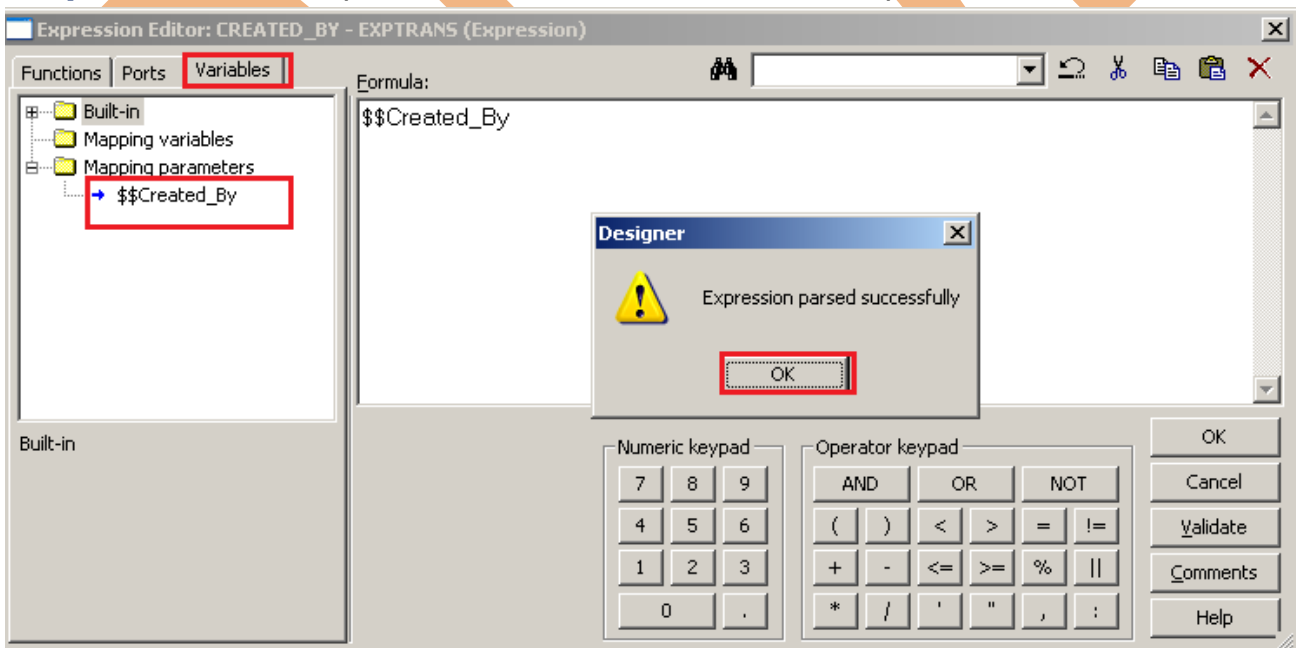
Step-16 Now right click on Expression Transformation Table and then click on Edit option.



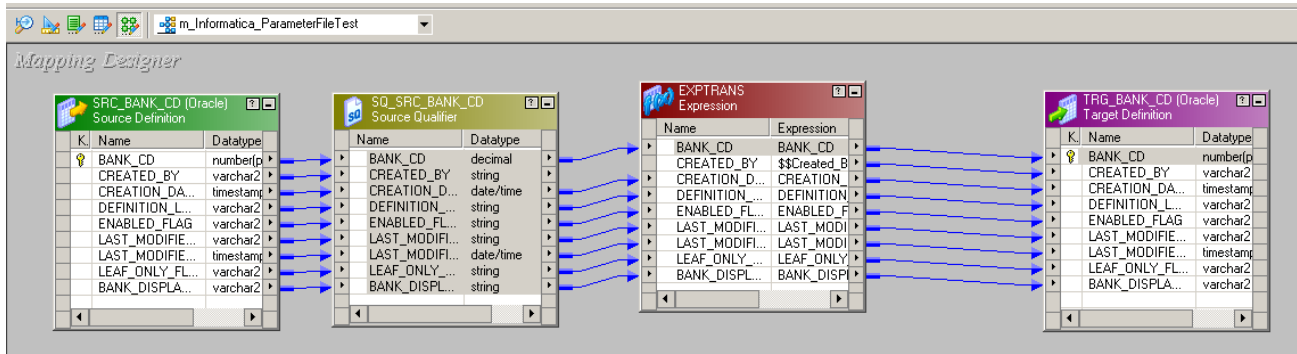
Step-17 Go to ports tab and specify Expression.



Step-18 Now select parameter and click on Validate option.



Step-19 Now map with target table.



Step-20 Save this mapping.

```
05/02/2013 15:14:13 *** Saving... Repository infoReposUser, Folder FLTFILE_TO_RDBMS

Validating transformations of mapping m_ParameterFileTest...
...transformation validation completed with no errors.
Validating data flow of mapping m_ParameterFileTest...
...data flow validation completed with no errors.
Parsing mapping m_ParameterFileTest...
...parsing completed with no errors.

***** Mapping m_ParameterFileTest is VALID *****
mapping m_ParameterFileTest updated.
```

Step-21 Now create, workflow for run this mapping.

The screenshot shows the 'Edit Workflow - wf_ParameterFileTest' dialog box. The 'Name' field is highlighted with a red box and contains 'wf_ParameterFileTest'. The 'OK' button at the bottom is also highlighted with a red box.

General Properties Scheduler Variables Events Metadata Extensions

Name: wf_ParameterFileTest

Comments:

Integration Service: intservice

Suspension email:

Runtime options: Disabled Suspend on error

Web Services: Enabled

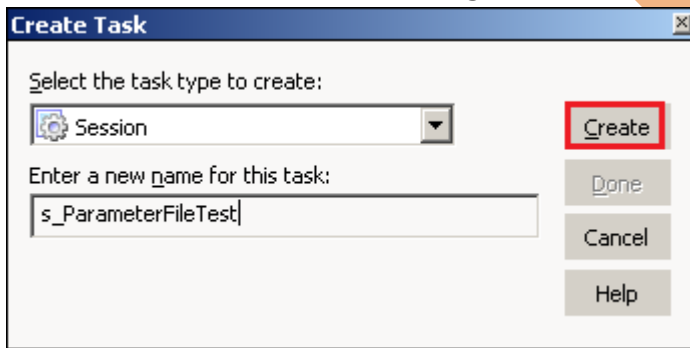
Configure Concurrent Execution: Enabled

Load Balancing: Service Level: Default

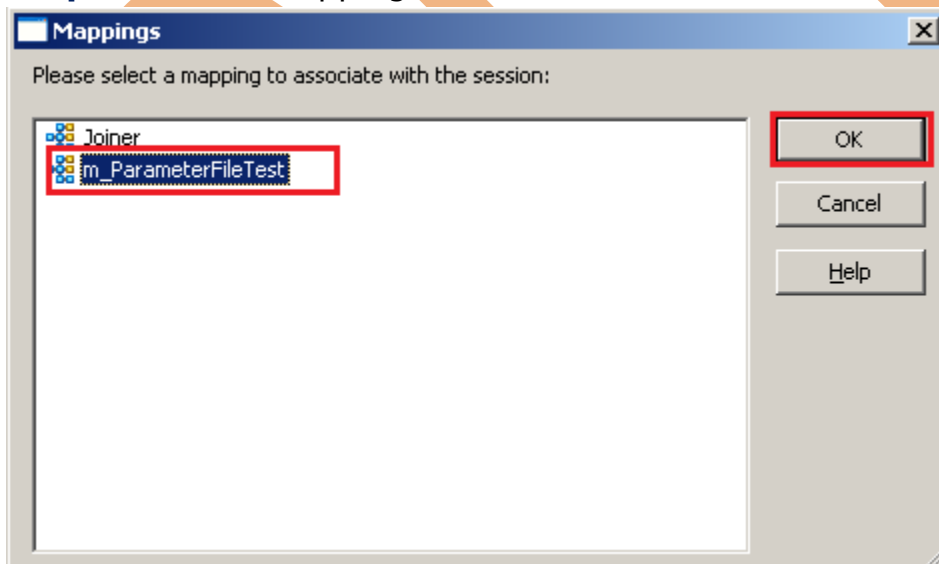
OK Cancel Apply Help



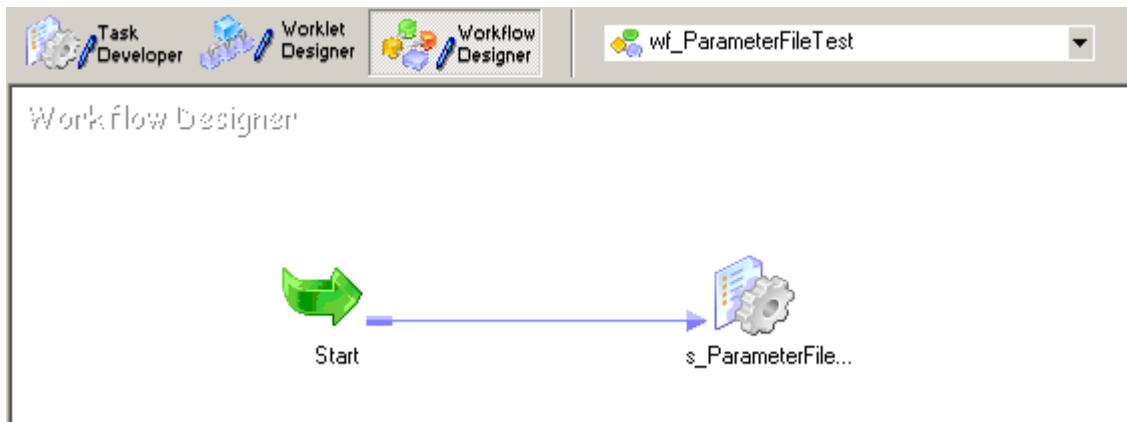
Step-22 Now create session, So click on Task menu and click on create option and then select session and given session name and click on Create button.



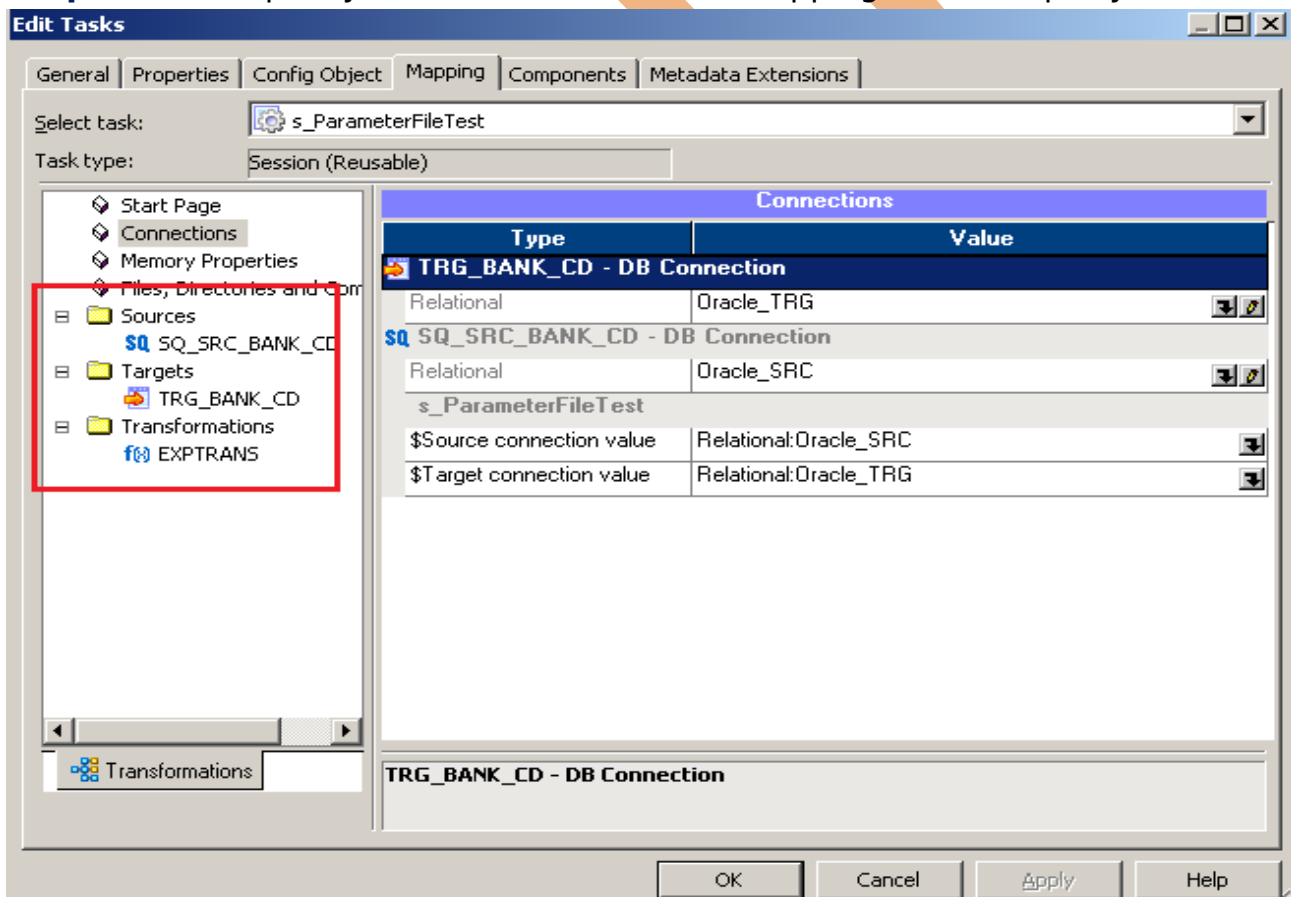
Step-23 Select mapping.



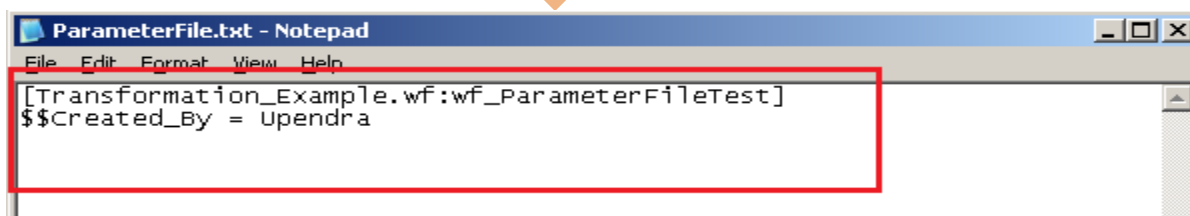
Step-24 Link workflow to session.



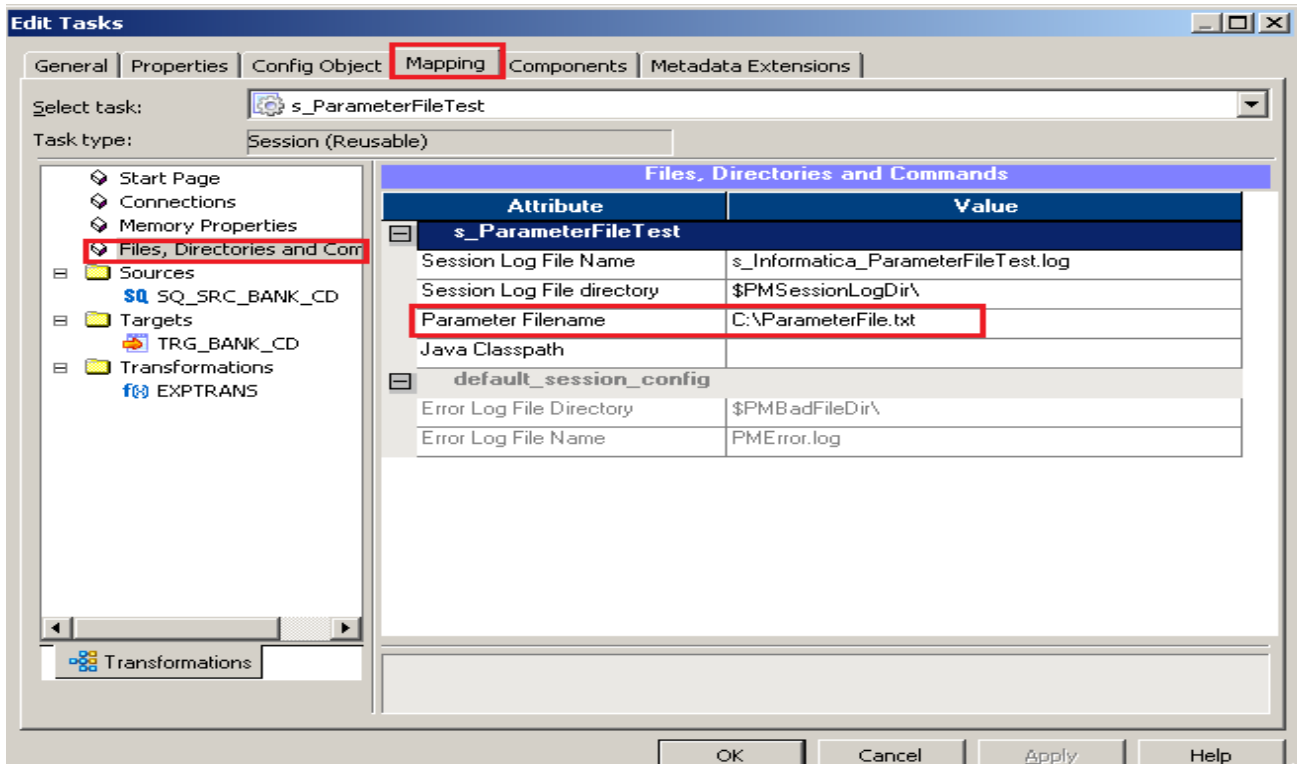
Step-25 Now, specify connection for table in Mapping tab in Property.



Step-26 Now, create parameter file in notepad or text editor.



Step-27 Now, specify parameter path.



Step-28 Now save this workflow.

05/02/2013 15:14:19 *** Saving... Repository infoReposUser, Folder FLTFILE_TO_RDBMS

Validating the flow semantics of Workflow wf_ParameterFileTest...
 ...flow semantics validation completed with no errors.

Validating tasks of Workflow wf_ParameterFileTest...
 ...Workflow wf_ParameterFileTest tasks validation completed with no errors.

***** Workflow wf_ParameterFileTest is VALID *****

Workflow wf_ParameterFileTest updated.

Step-29 Now Execute this workflow.



Step-30 Execution of workflow in workflow Monitor.

Workflow Run	Start Time	Completion Time	Status
wf_TestParameter			
wf_TestParameter	5/22/2013 2:20:44 PM	5/22/2013 2:20:47 PM	Succeeded
Start	5/22/2013 2:20:44 PM	5/22/2013 2:20:44 PM	Succeeded
s_Informatica_ParameterFileTest	5/22/2013 2:20:44 PM	5/22/2013 2:20:46 PM	Succeeded
wf_TestParameter	5/22/2013 2:18:50 PM	5/22/2013 2:18:52 PM	Succeeded
wf_TestParameter	5/22/2013 2:15:55 PM	5/22/2013 2:15:58 PM	Succeeded
wf_TestParameter	5/22/2013 2:14:34 PM	5/22/2013 2:14:37 PM	Succeeded
wf_TestParameter	5/22/2013 2:13:07 PM	5/22/2013 2:13:10 PM	Succeeded
wf_TestParameter	5/22/2013 2:12:03 PM	5/22/2013 2:12:11 PM	Succeeded

Step-31 Target Table data.

BANK_CD	CREATED_BY	CREATION_DATE	DEFINITION_LANGUAGE	ENABLED_FLAG	LAST_MODIFIED_BY	LAST_MODIFIED_DATE	LEAF_ONLY_FLAG	BANK_DISPLAY_C
1	2 Upendra	1-JUN-20 10.00.00.000000000 AM	US	Y	RTUSER	11-JUN-20 10.00.00....	Y	NAB
2	1 Upendra	1-JUN-20 10.00.00.000000000 AM	US	Y	RTUSER	11-JUN-20 10.00.00....	Y	1
3	0 Upendra	1-JUN-20 10.00.00.000000000 AM	US	Y	RTUSER	11-JUN-20 10.00.00....	Y	0
4	5 Upendra	21-MAR-11 07.32.30.000000000 AM	US	Y	PAT	21-MAR-11 07.32.30...	Y	(null)
5	3 Upendra	1-JUN-20 10.00.00.000000000 AM	(null)	N	RTUSER	11-JUN-20 10.00.00....	Y	NAB
6	4 Upendra	1-JUN-20 10.00.00.000000000 AM	US	Y	V	11-JUN-20 10.00.00....	(null)	(null)
7	600 Upendra	1-JUN-20 10.00.00.000000000 AM	US	N	user	(null)	(null)	(null)
8	456 Upendra	null	(null)	(null)	(null)	(null)	(null)	(null)
9	88 Upendra	1-JUN-20 10.00.00.000000000 AM	IN	N	MUSER	(null)	(null)	(null)