



Informatica Power Center 9.0.1

Working with Informatica Repository

Description:

BISP is committed to provide BEST learning material to the beginners and advance learners. In the same series, we have prepared a complete end-to end Hands-on Guide for building financial data model in Informatica. The document focuses on how the real world requirement should be interpreted. The mapping document template with very simplified steps and screen shots makes the complete learning so easy. The document focuses on how to various operation associated with Repository. **Join our professional training program and learn from experts.**

Contents

Contents.....	2
What is Informatica Repository	3
Operations of Repository.....	3
Folder Maintenance Task.....	3
Open Repository Manager and Configure Domain and Connect to Repository.....	4
Creating Folder.....	7
Editing Folder.....	9
Administration of Shortcuts, and Reusable Object.....	15
Give permissions for created database connection in Oracle RDBMS.....	19
Pros and Cons of Global Repository.....	23
View object dependencies.....	26
.....	27

What is Informatica Repository

The Informatica PowerCenter repository resides in a RDBMS. The repository database tables contain the instructions required to perform ETL Process (extract, transform, and load data). Repository clients access the repository database tables through the Repository Service. A repository client is any PowerCenter component that connects to the repository.

The Repository Service manages repository metadata transaction requests from repository clients. Each Repository Service manages a single repository. The Repository Service uses object-locking to ensure the consistency of metadata in the repository.

The Repository Service accepts client metadata transaction requests from the following PowerCenter components:

PowerCenter Client tools. Use the Designer to create and store mapping metadata in the repository. Use the Workflow Manager to store workflow metadata and connection object information in the repository. Use the Workflow Monitor to retrieve workflow run status information and session logs written by the Integration Service. Use the Repository Manager to organize and secure metadata by creating folders. You can manage the repository from the PowerCenter Administration Console.

PMREP and INFACMD. Use pmrep to perform repository metadata administration tasks, such as listing repository objects. Use infacmd to perform service-related functions, such as creating or removing a Repository Service.

Integration Service. When you start the Integration Service, it connects to the repository to schedule workflows. When you run a workflow, the Integration Service retrieves workflow task and mapping metadata from the repository. During the workflow run, the Integration Service writes workflow status information to the repository.

Operations of Repository.

Folder Maintenance Task

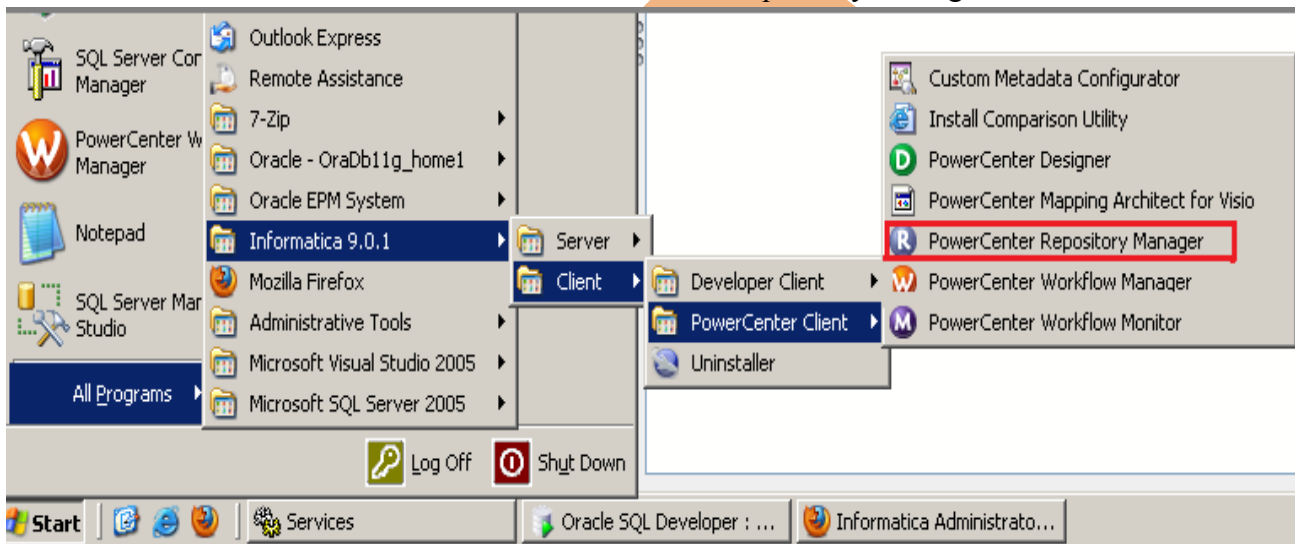
Folders provide a way to organize and store metadata in the repository, including transformation, maplet, mappings, and sessions. Folders help you logically organize the repository. Each folder has a set of properties that you can configure to define how users access the folder.

Configure the following task when we work with folder.

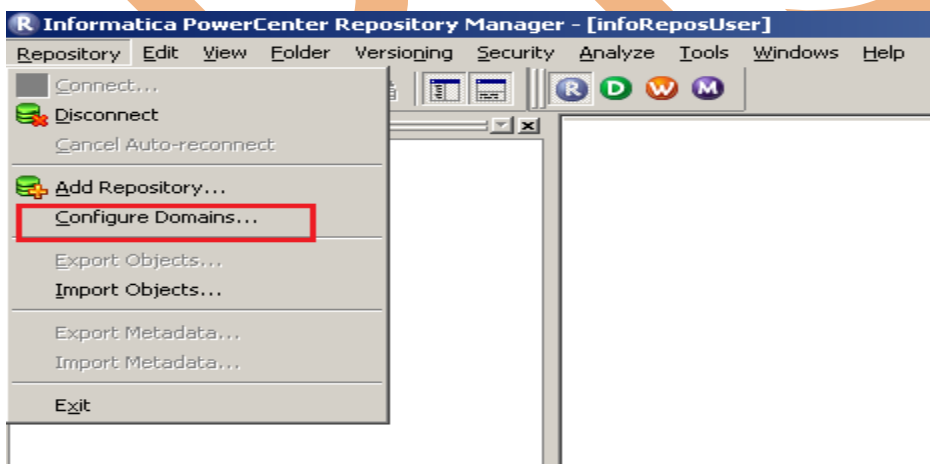
- Configure folder properties.
- Compare folders.
- Manage permissions.
- Copy Folder.

Open Repository Manager and Configure Domain and Connect to Repository

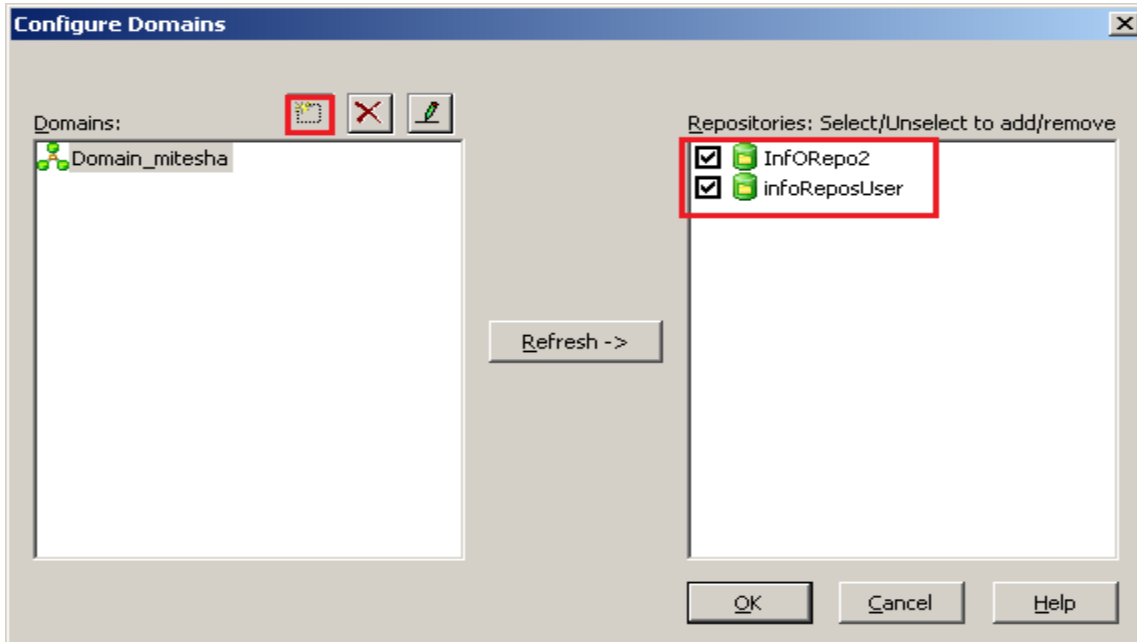
Step-1 Open Informatica Administrator, Click on Start ⇒ All Programs ⇒ Informatica 9.0.1 ⇒ Client ⇒ PowerCenter Client ⇒ PowerCenter Repository Manager.



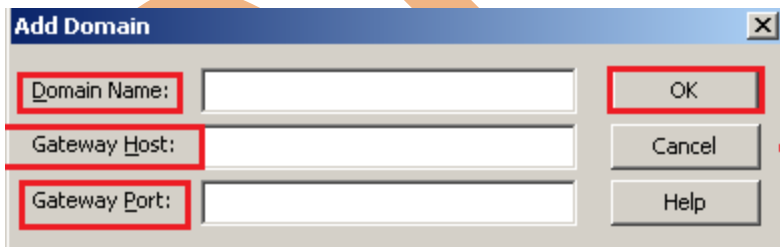
Step-2 Now, We add domain connection information to the PowerCenter Client so that we can connect to repositories in the domain. Go to Repository tab and click on Configure Domains



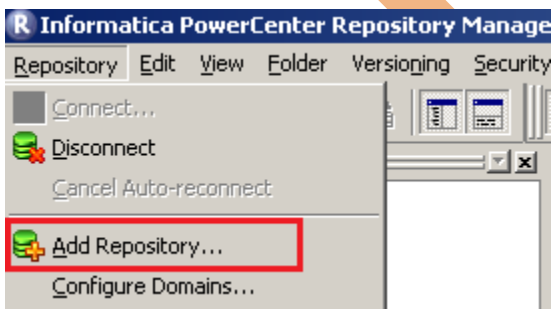
Step-3 Now, Select domain for repository, If no domain in Domains then create new domain, click on Add a New Domain Button.



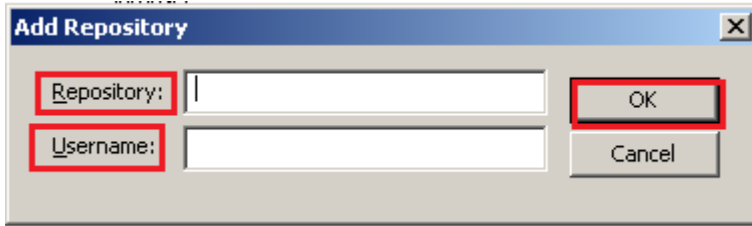
Step-4 Now, Enter the domain name, gateway host name, and gateway port number and then click OK button to add domain connection.



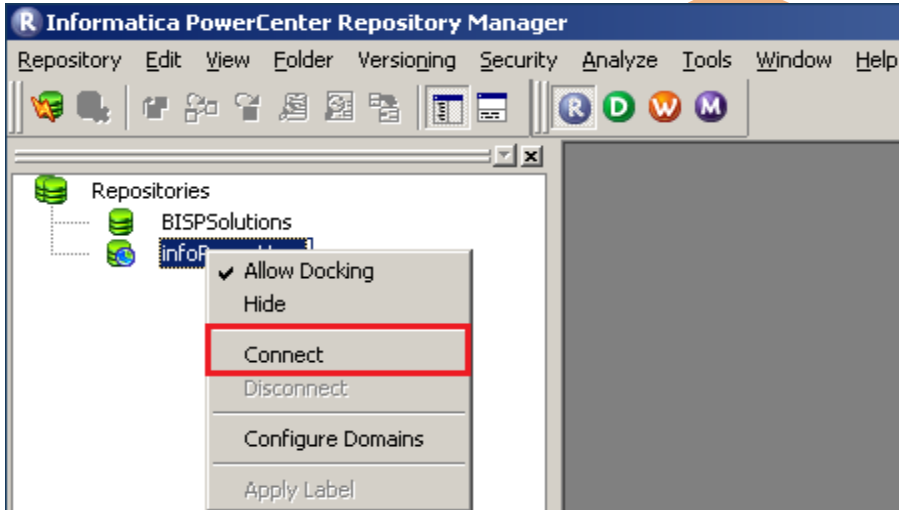
Step-5 Now, Add a repository when a repository exists but does not appear in the Navigator. We can add a repository in the Repository Manager, the Designer, the Workflow Manager, or the Workflow Monitor. Click on Repository menu in menu bar and then click on Add Repository



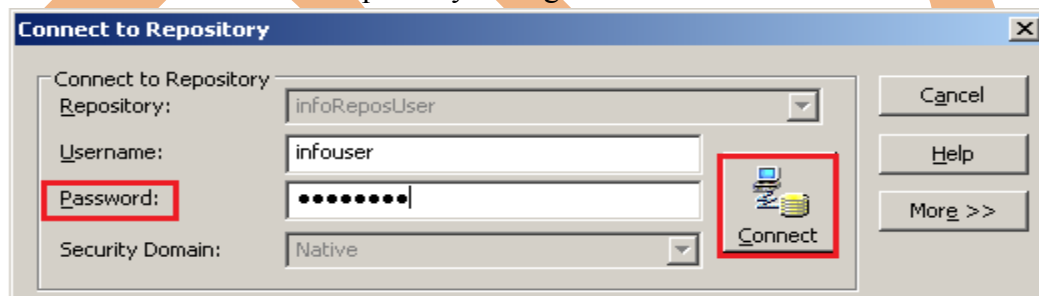
Step-6 Now, Enter Repository name and valid Username and then click OK button.



Step-7 Now, Click on connect to repository in Repositories navigator.

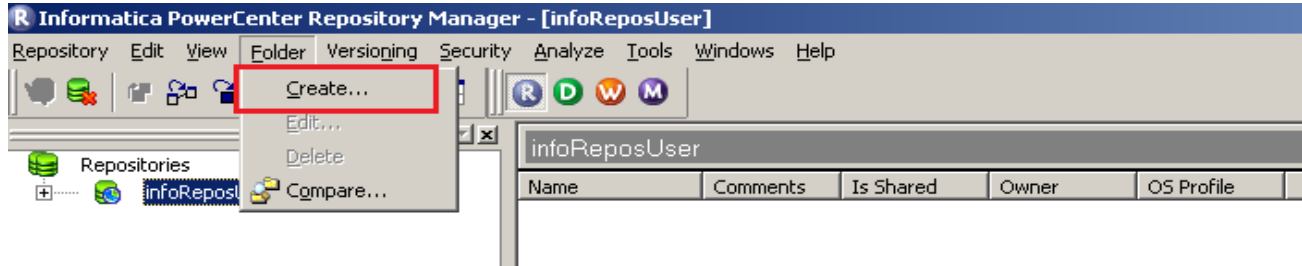


Step-8 Now, give User name and password and click on Connect button to connect repository in Informatica PowerCenter repository manager environment.



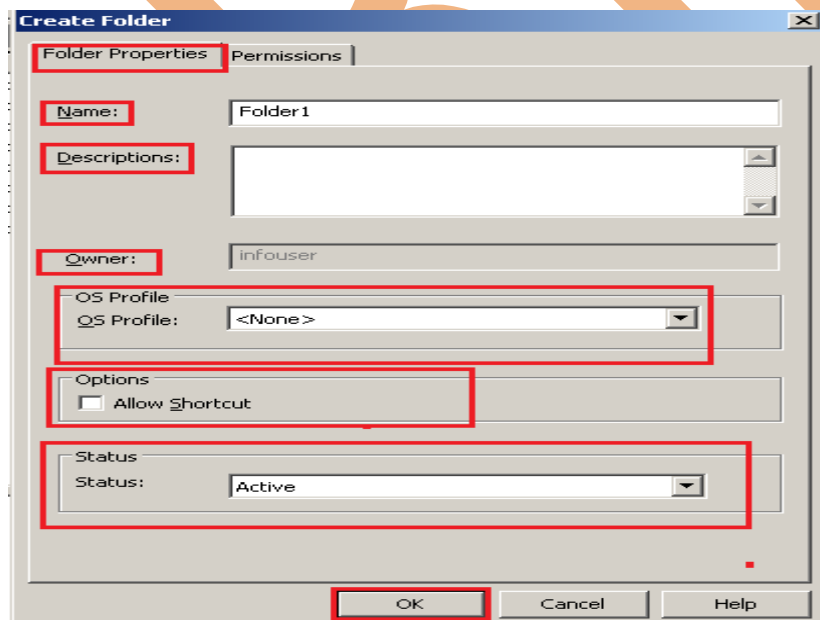
Creating Folder

Step-1 Now, Go to menu bar and click on Folder menu and click on Create.

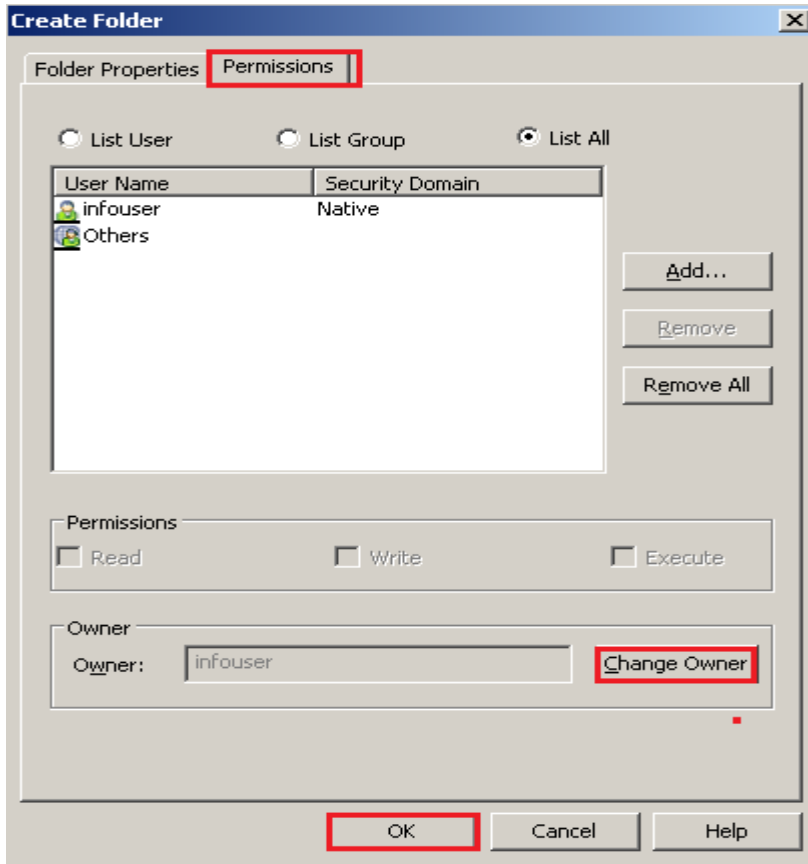


Step-2 Now, specify these information and also set Permission on permission tab.

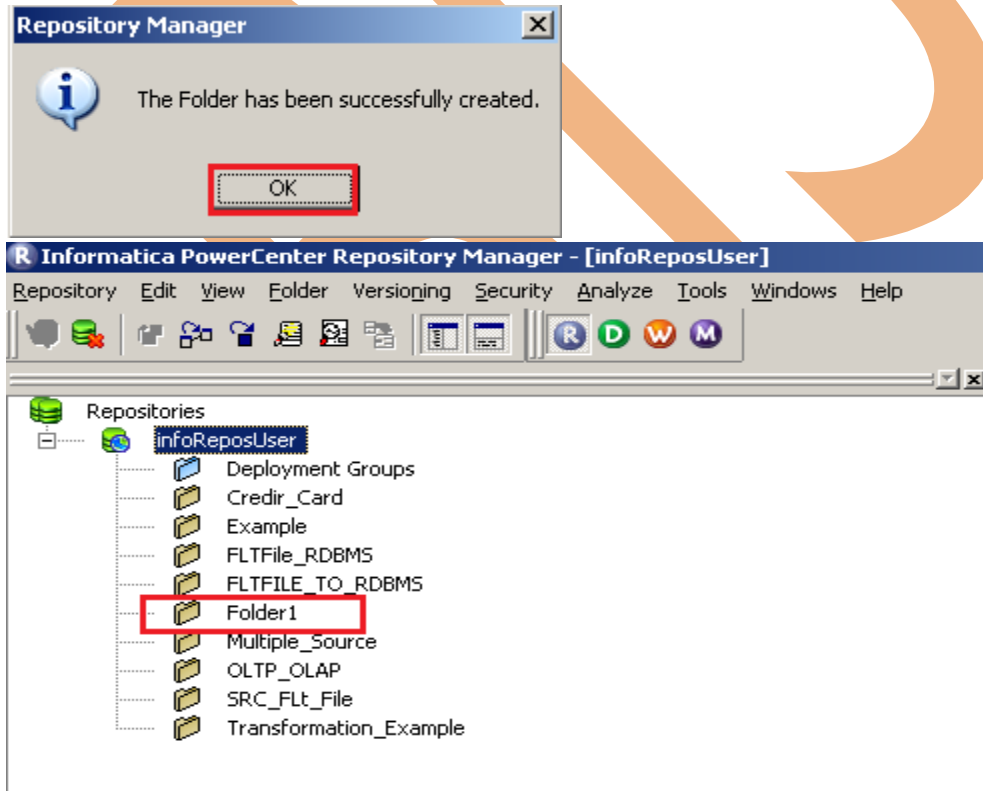
S.No	Property	Description
1	Name	Your Repository Name. It is not contain space and special character.
2	Description	An optional description about the repository. The description field cannot exceed 765 characters.
3	Owner	Owner of the Folder.
4	OS Profile	Operating System Profile Name, if Integration services used.
5.	Options	Make the folder the shared
6.	Status	Applies the status applied to all objects in the folder. Required for versioned repositories.



Step-3 Now, Set permission.

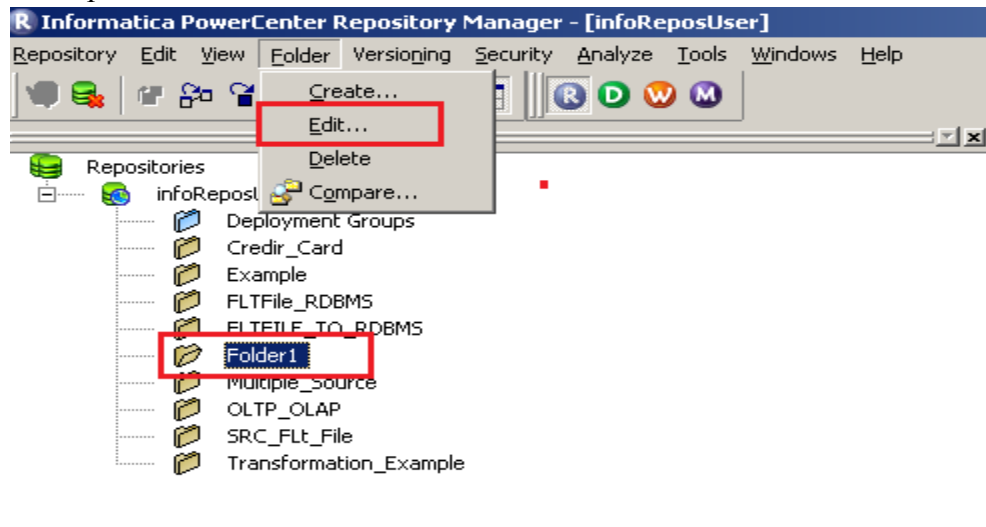


Step-4 Folder created successfully. Now check Folder in repository window.

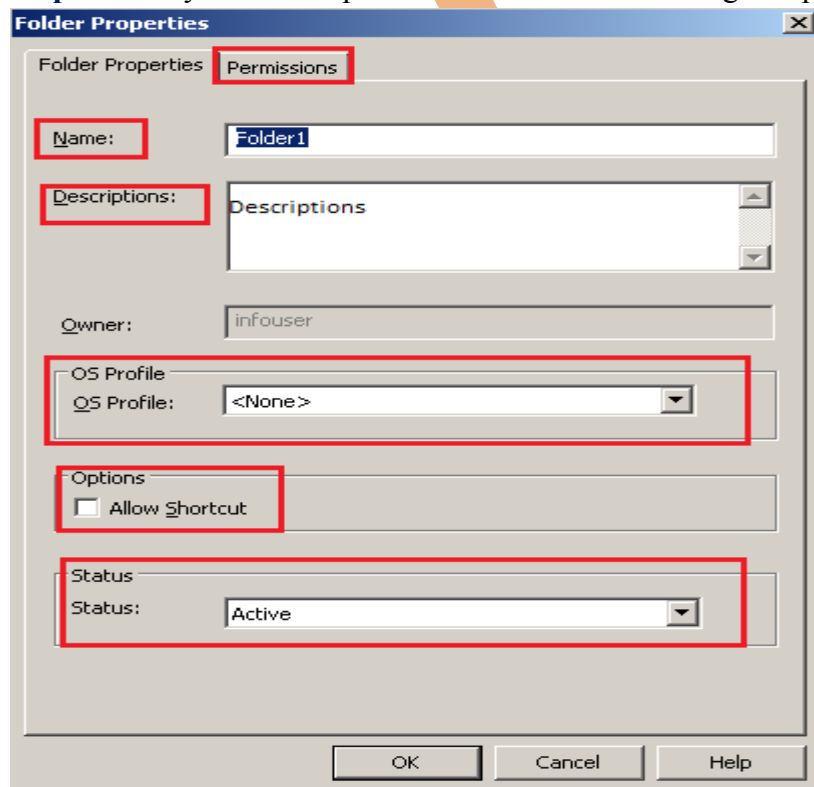


Editing Folder

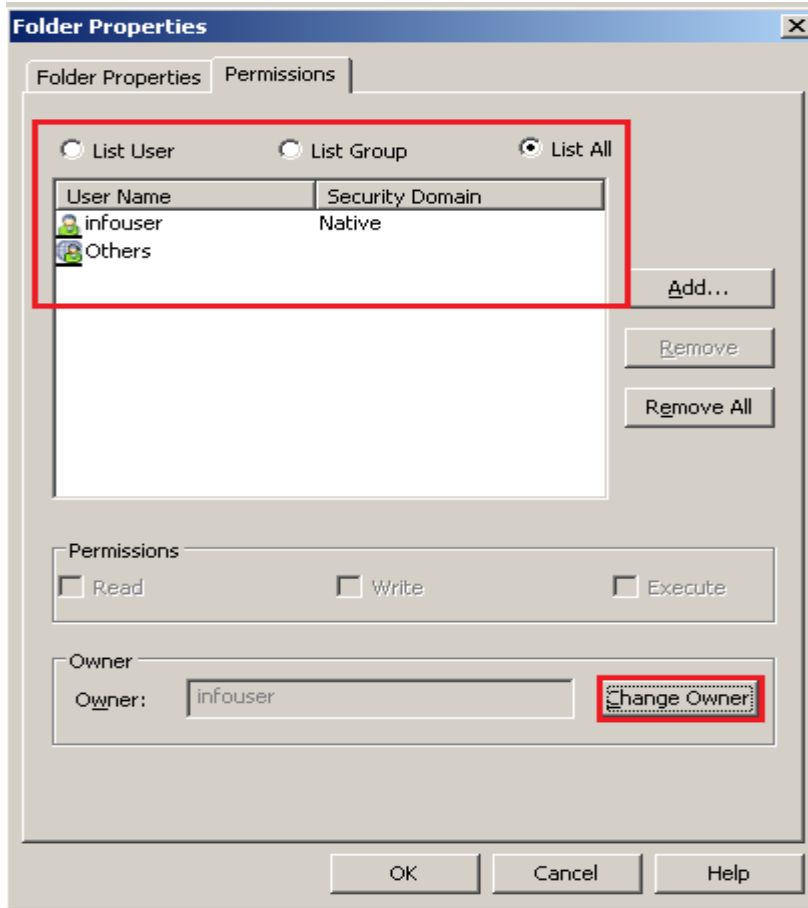
Step-1 Now editing of Folder., Select Folder and click on Folder menu in menu bar and then select Edit option.



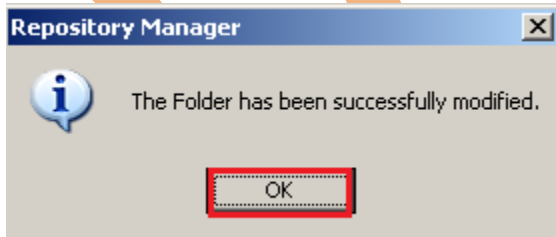
Step-2 Now you edit of specified information and edit given permission.



Step-3 Select Editing options and then click on OK buttons

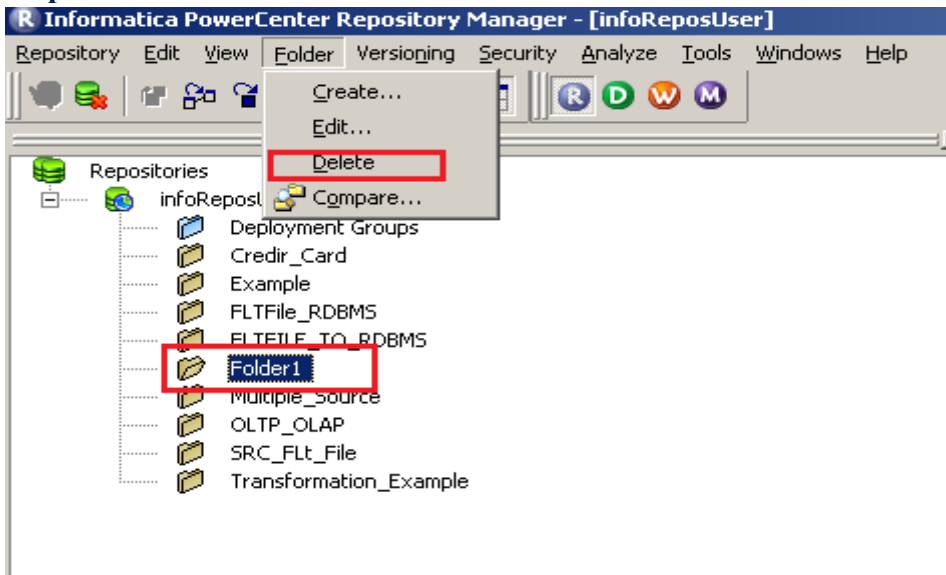


Step-4 Folder modified successfully.

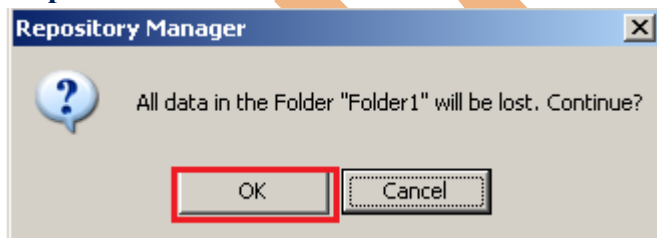


Deleting Folder

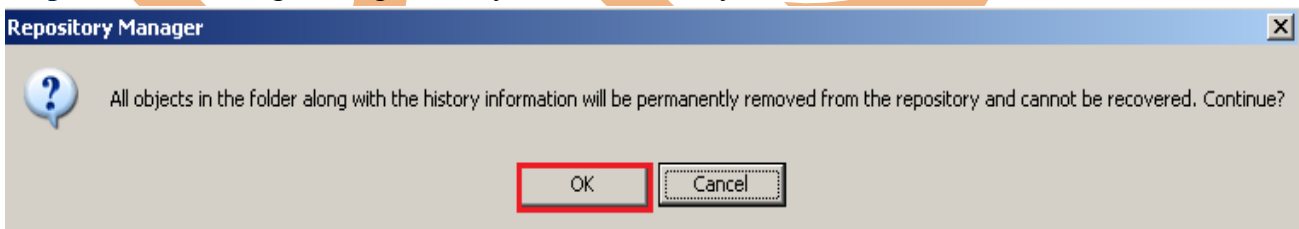
Step-1 Select Folder for delete.



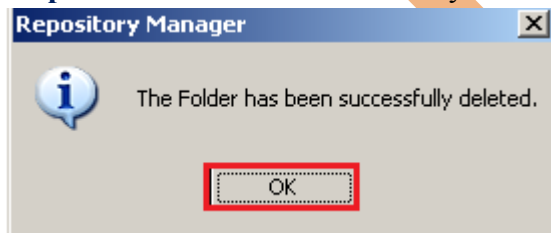
Step-2 Click OK buttons.



Step-3 Read warning message and if you want to finally delete this folder then click OK button.



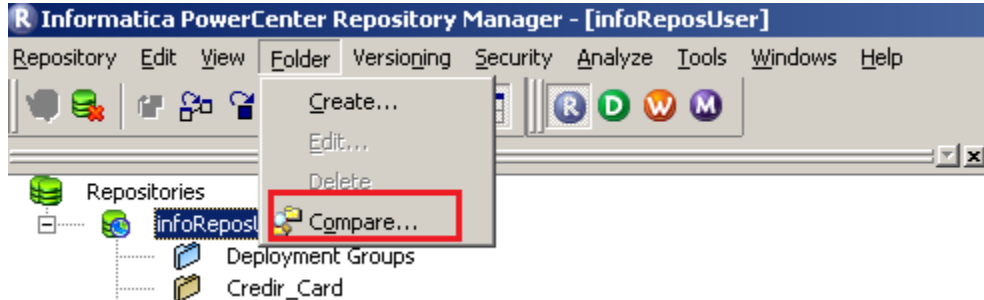
Step-4 Folder deleted successfully.



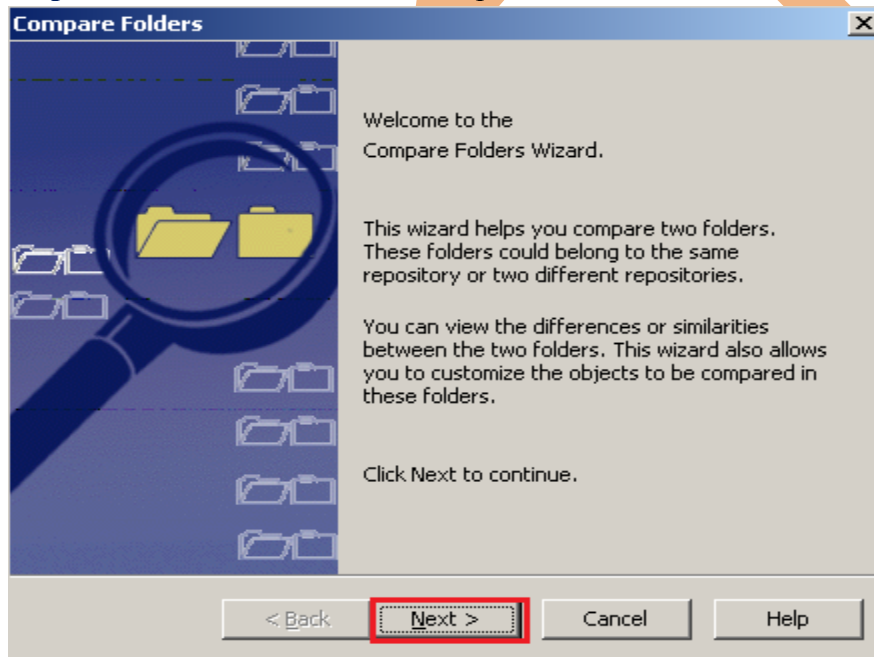
Comparing Folder

Before comparing folders, verify that you have Read permission for each folder you want to compare. Connect to the repositories containing the folders in the wizard.

Step-1 Go to Folder menu and select Compare option to compare two folder.



Step-2 Click on Next button to compare two folder.



Step-3 Here you select Folder1 or Folder2, First select Repository Name and then click on Next button.

Compare Folders

Connect
Select the repositories containing the folders to be compared and connect. Then choose the folders to be compared.

Folder1
Repository Name: infoReposUser [Connect...]
Folder Name: Credir_Card

Folder2
Repository Name: infoReposUser [Connect...]
Folder Name: Example

< Back [Next >] Cancel Help

Step-4 Here you select, how many object you want to compare.

Compare Folders

Objects
Select the objects you want to compare.

Objects to compare:

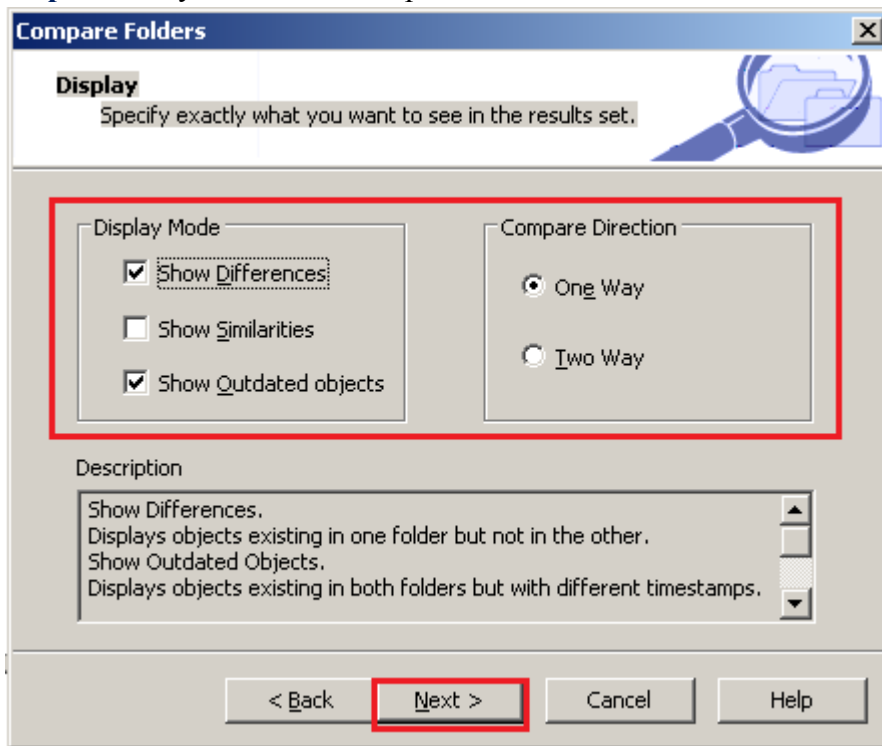
- Sources
- Targets
- Reusable Transformations
- Mappings
- Mapplets
- Source Fields
- Target Fields

Select All
Clear All

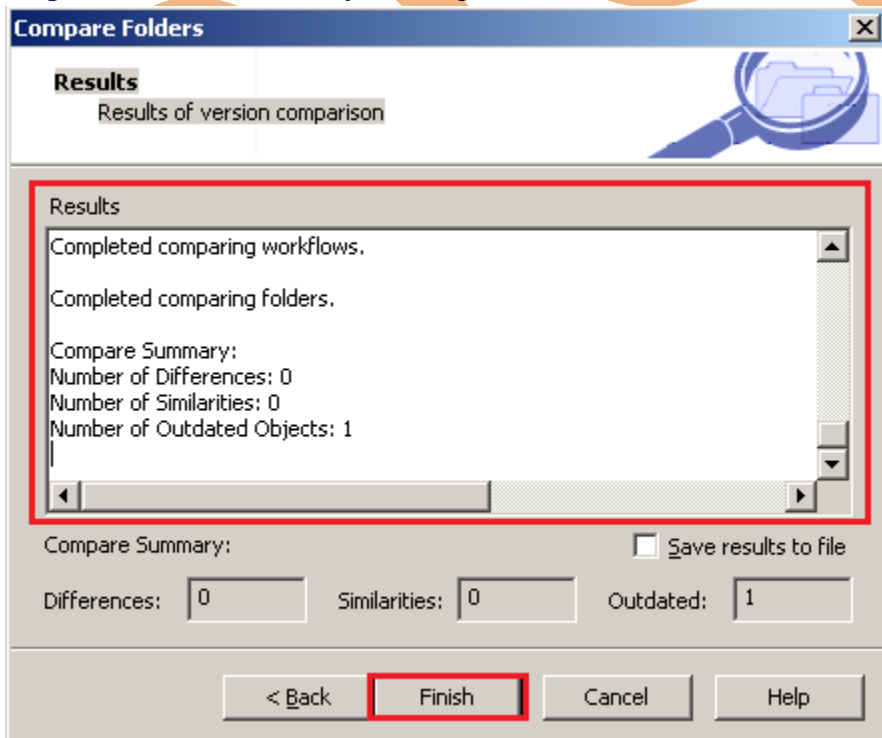
Objects Selected: 13 of 22.

< Back [Next >] Cancel Help

Step-5 Here you select these options.



Step-5 This is the summary of comparison of two Folder.

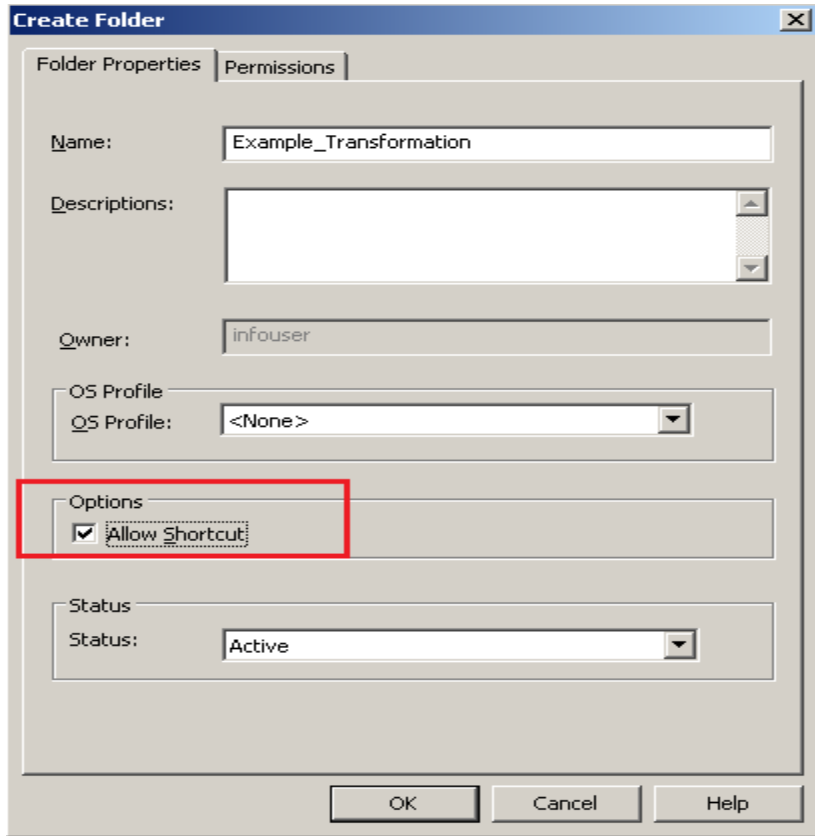


Administration of Shortcuts, and Reusable Object

Shortcuts - Any object used in more than one folder is called Shortcuts. Shortcut is a concept of reusability. This is used in shared Folder. There are two types of shortcuts.

- Local Shortcuts - Used for local repository.
- Global Shortcuts - Used for global repository.

Step-1 When you create Folder, then select shortcuts option for create shortcuts.



Reusable Object - Reusable object is used for create one time and used multiple time in repository. We create following reusable object.

S.No	Object Name	Description
1.	Transformation	Transformation Developer window to used for create reusable transformation in Informatica PowerCenter Designer.
2.	Mapplet	Mapplet Designer window to used for create reusable mapplet object in Informatica PowerCenter Designer.
3.	Session	Task Developer window to used for create reusable session or task in Informatica PowerCenter Workflow Manager

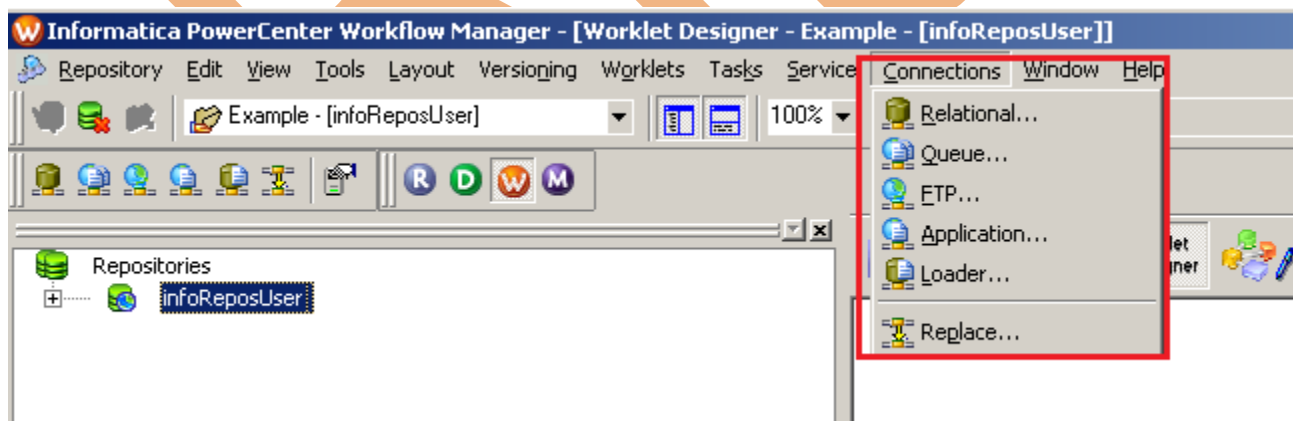
Database Connection

The Database connection is use for connect to database during execution of session or workflow. Connection object is a global object that defines a connection in the repository. You create and modify connection objects and assign permissions to connection objects in the Workflow Manager.

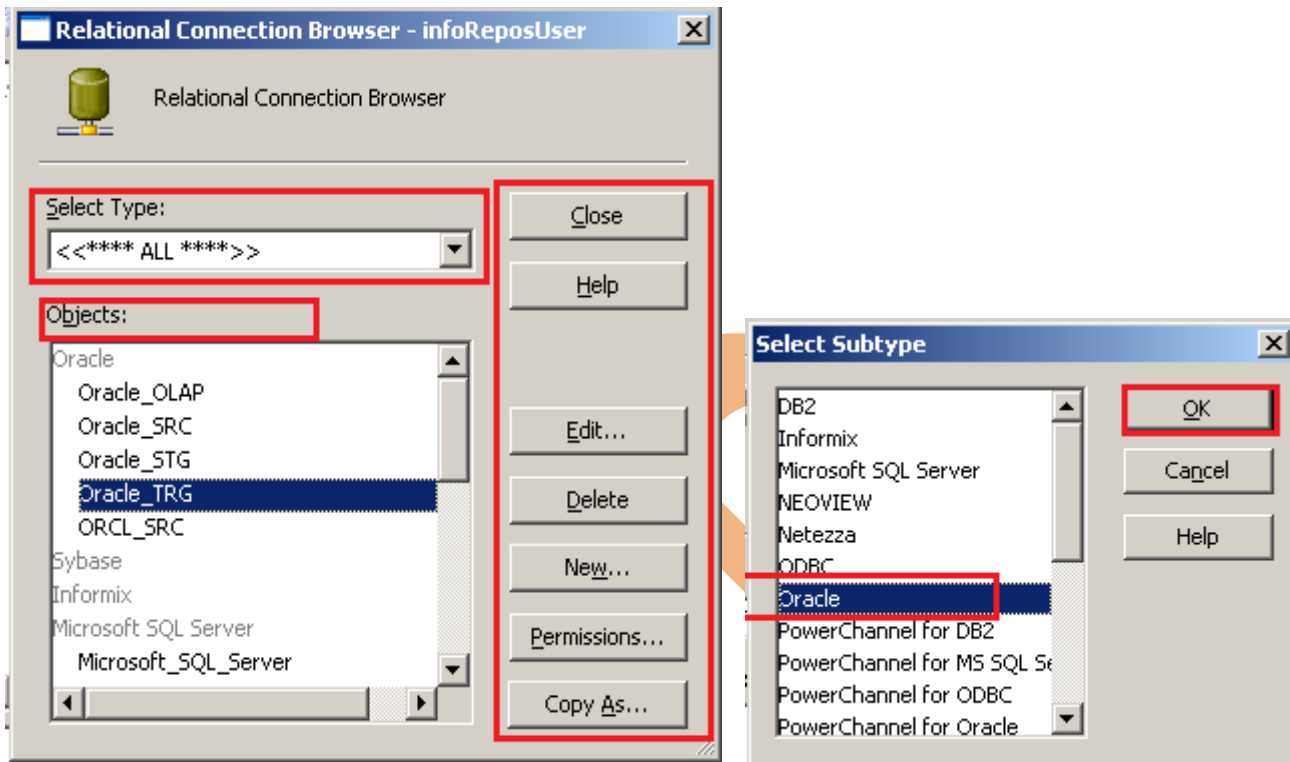
Creating database connection for Oracle RDBMS.

S. No	Object Name	Description
1.	Relational	Relational connection is used for RDBMS source, lookup, store procedure or target database. When you configure a session, you cannot change the relational connection type.
2.	Queue	Database connection for message queues, such as WebSphere MQ or MSMQ.
3.	FTP	FTP or SFTP connection to the FTP host.
4.	Application	Connection to source or target application, such as Netezza or SAP NetWeaver.
5.	Loader	Relational connection to the external loader for the target, such as IBM DB2 Autoloader or Teradata FastLoad
6.	Replace	Replace a connection object when you want to update for all sessions in the repository that use the connection.

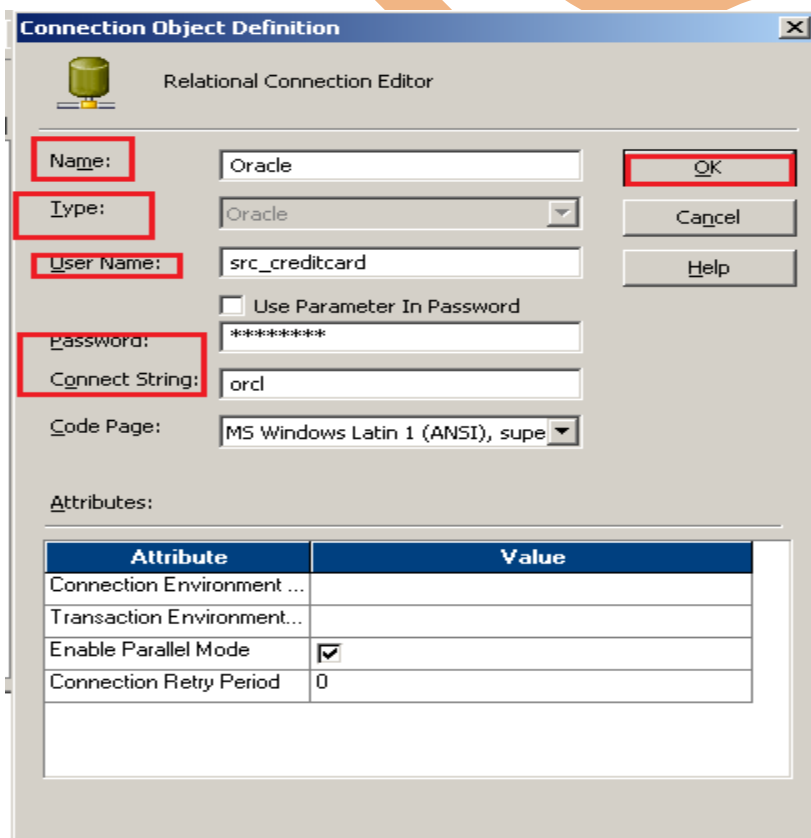
Step-1 Open Informatica PowerCenter Workflow Manager and click on Connection menu in menu bar and then click connection types if source or target is RDBS then select Relational.



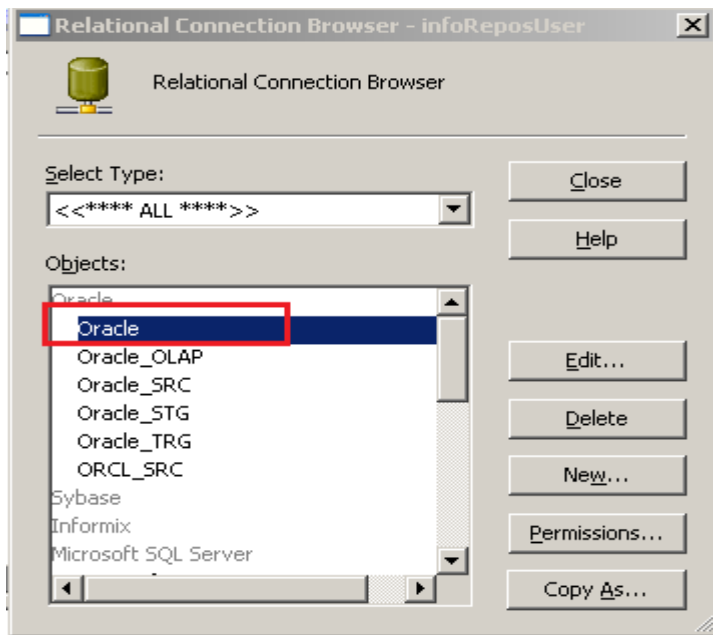
Step-2 Select Type and click on New Button.



Step-3 Here specify these information, connection name, username and its password and also connection string. (This connection for Oracle) and then click OK button.

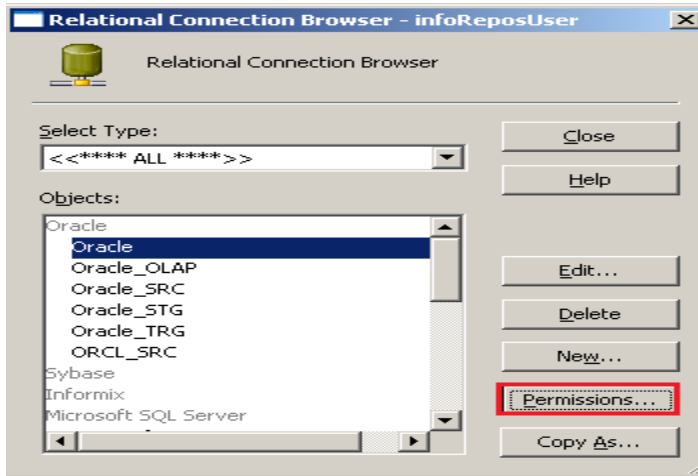


Step-4 Here connection created successfully.

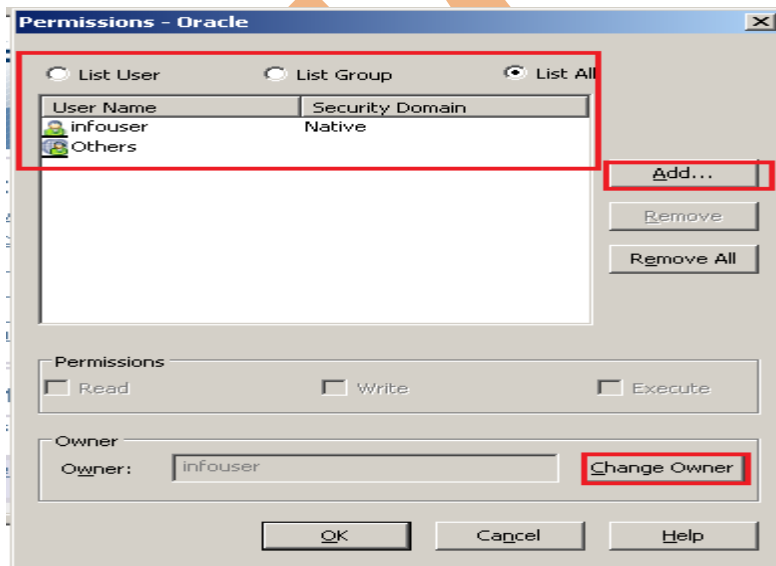


Give permissions for created database connection in Oracle RDBMS.

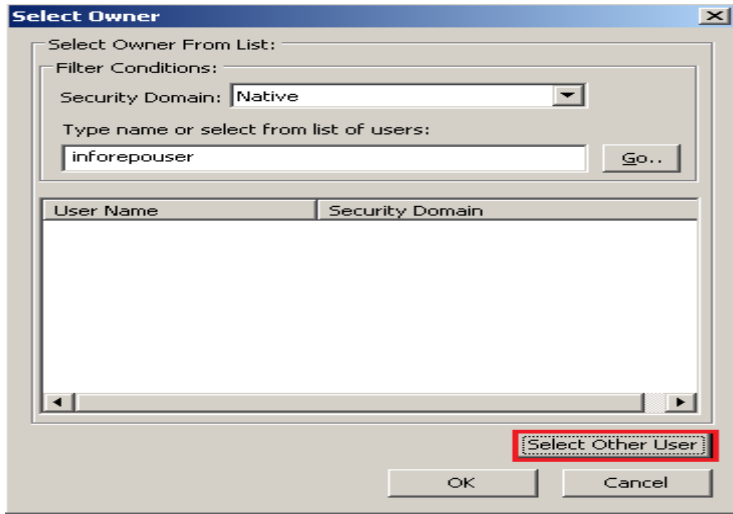
Step-1 Select connection and click on Permission button.



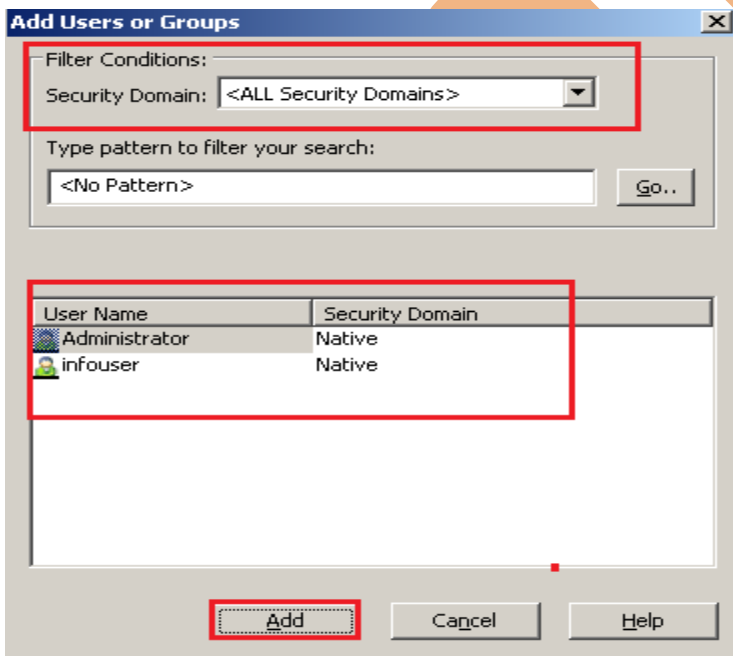
Step-2 Add username or Change Owner.



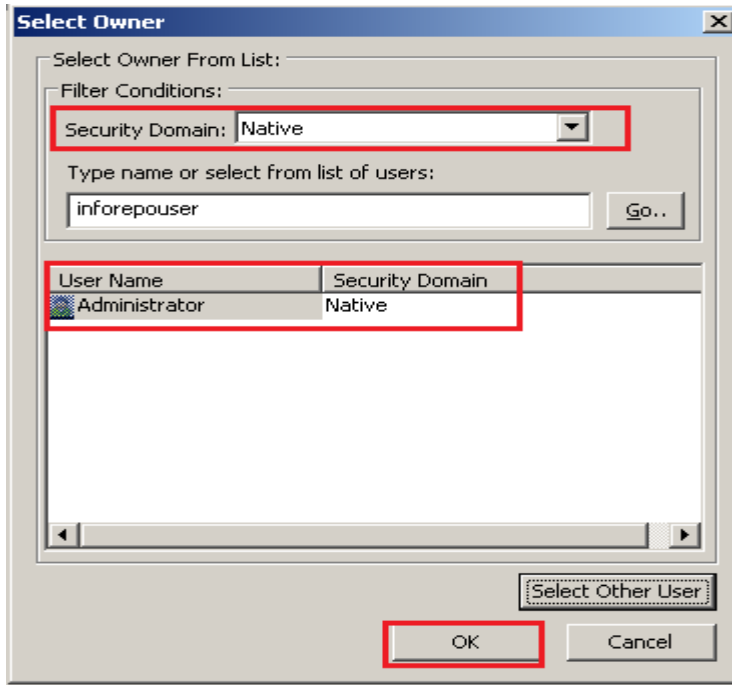
Step-3 If you select other user, then click on Select Other User.



Step-4 Select user or Add user.

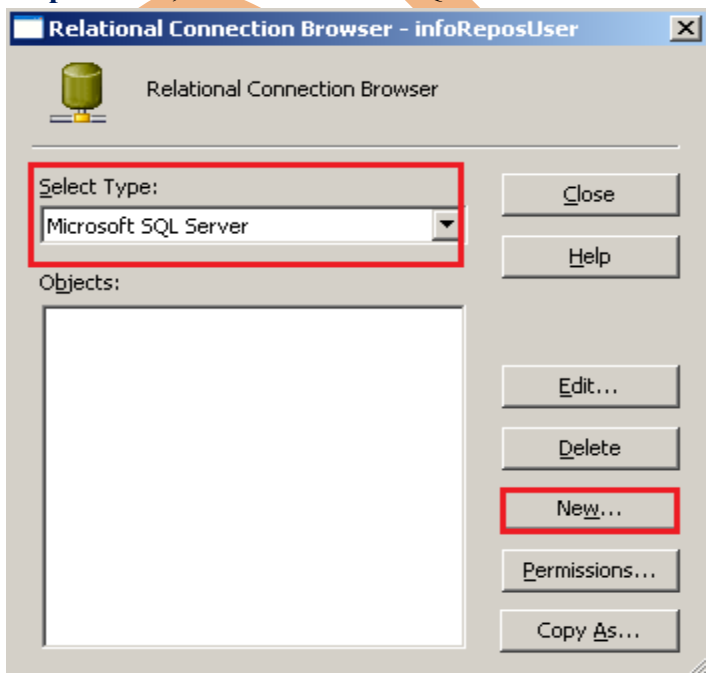


Step-5 Then click on OK button.

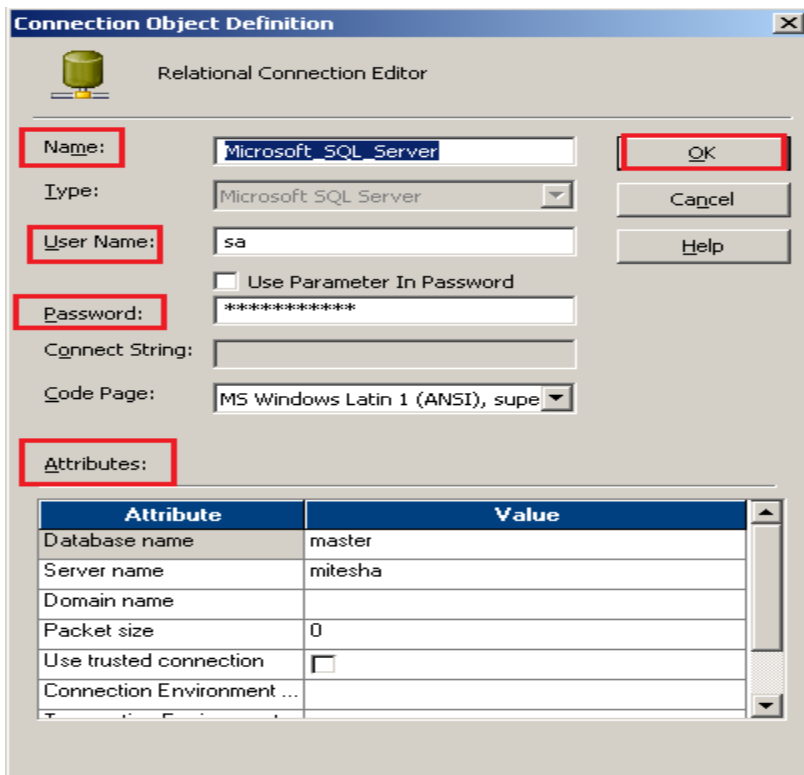


These are step by step for create database connection for MS SQL Server RDBMS.

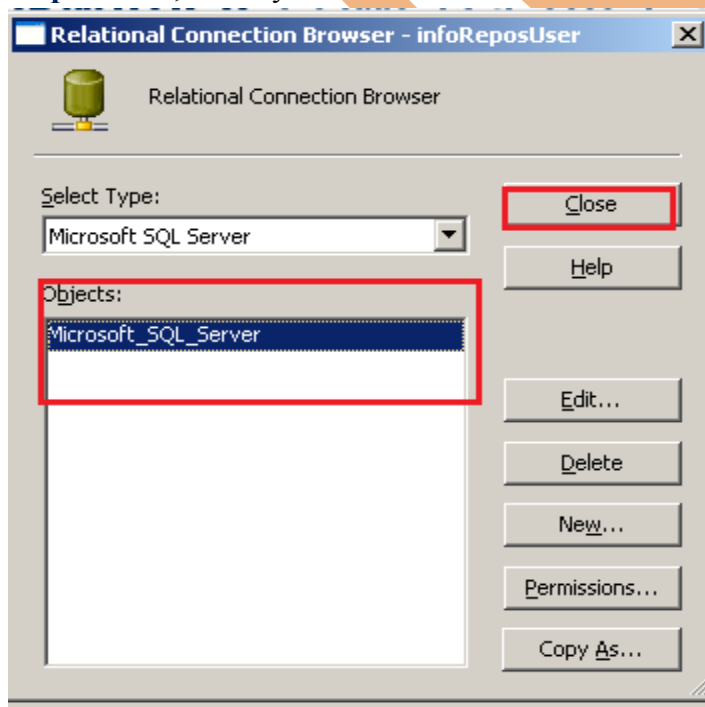
Step-1 Here, select Microsoft SQL Server and then click on New button.



Step-2 Here, specify these information and then click on OK button.



Step-3 Now, check your connection.



Pros and Cons of Global Repository.

There are three types of repository.

- Local Repository
- Global Repository
- Versioned Repository.

Global repository to store metadata objects that can/will be shared over the entire enterprise domain (registered local repositories).

Advantage or Pros of Global repository :

- Global Repository containing all of your reusable framework objects (Stored procs, table definitions, Mapplets, etc) which can then be used, via shortcuts, in multiple Local Repositories.
- Global repository is a central ETL library, and have different parts of the business reuse these objects in their own Local repositories.
- Global Repository can access anywhere.
- Global repository contains all the reusable objects (source, targets, mappings, mapplets, sessions).

Disadvantage or Cons of Global repository :

- You must be connected to Quality Center to work with a shared object repository in the file system.
- Once you save the file to the project, changes made to the Quality Center repository file will not affect the file in the file system and vice versa.

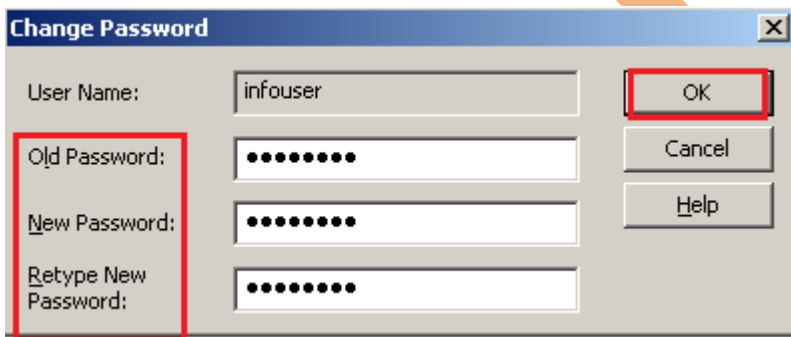
Change repository password.

If you are a native user, then you can change the password for your user account. If you change your password, you must update environment variables or *pmcmd* or *pmrep* script files that use the password. Replace the existing password with the new password.

Step-1 Go to Security tab and click on change password.



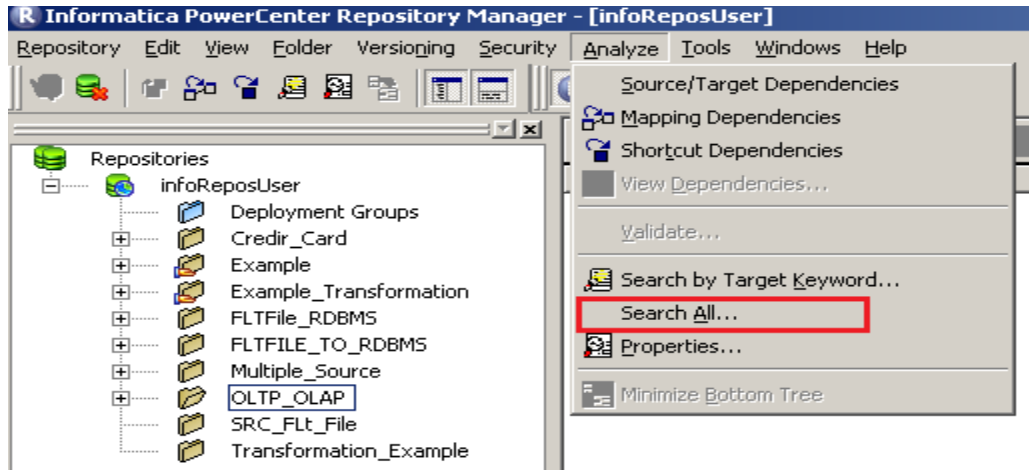
Step-2 Now, Enter these information and then click on OK button to change the password.



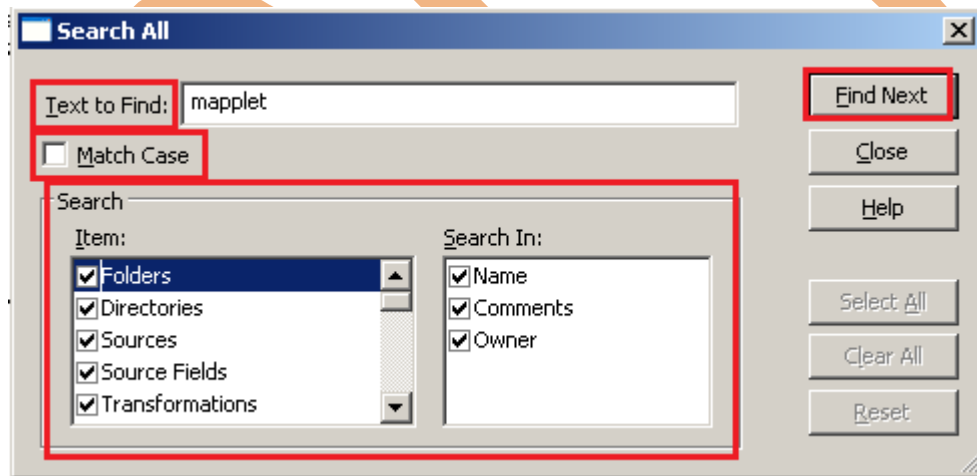
Search for repository objects or keywords.

In Informatica PowerCenter Repository Manager, Use Search All to search for text in the object name, comments, group name, and owner name associated with repository objects. You can search for text in the repository objects such as transformations, source and target fields, and tasks, workflow.

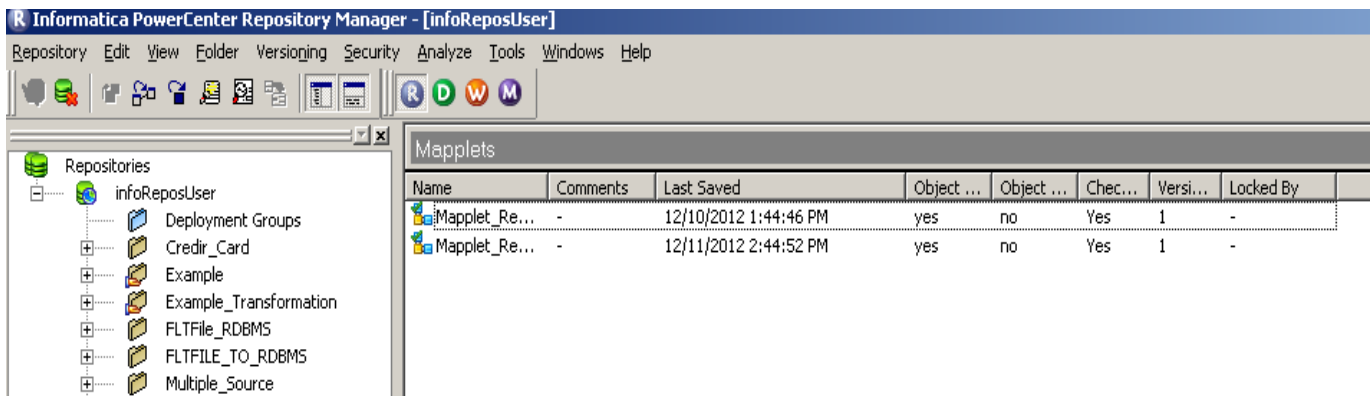
Step-1 Go to Analyze menu in menu bar and click on Search All options.



Step-2 Enter text name or object name and also you can select Match Case options and then click on Find Next Button.



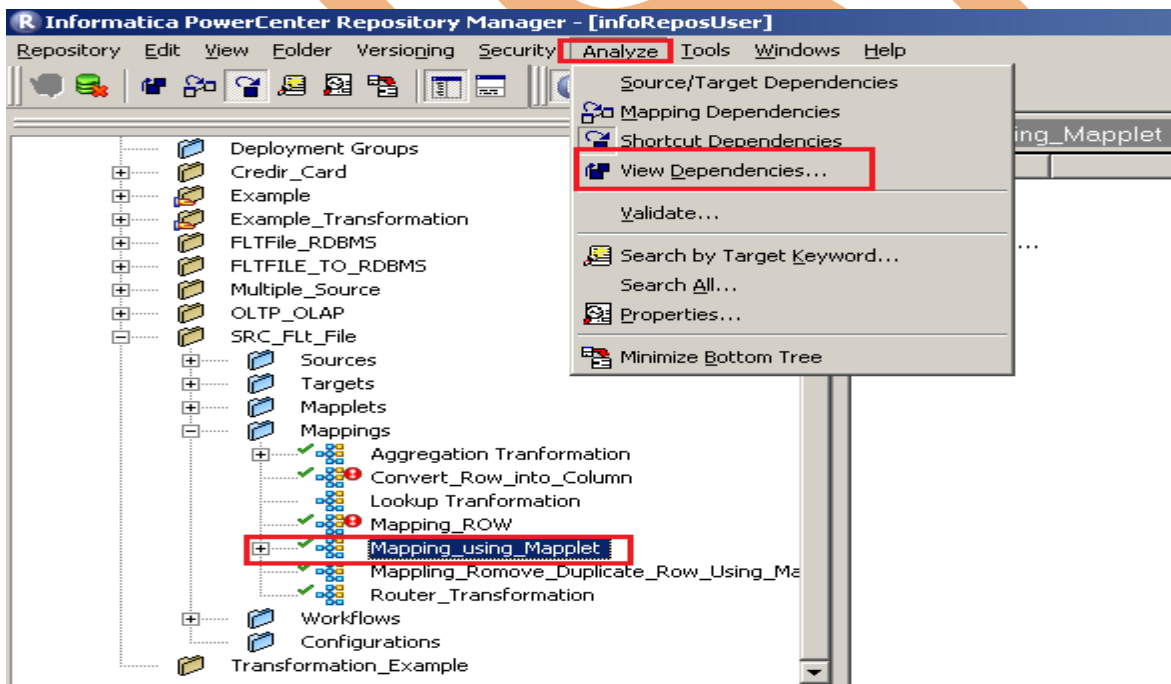
Step-3 Here, Result shown your search keyword.



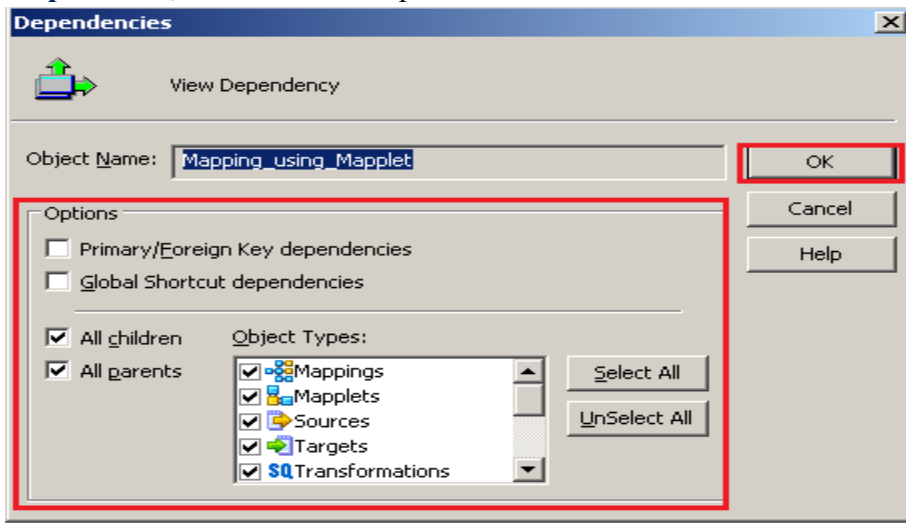
View object dependencies.

In Informatica PowerCenter Repository Manager, you can view dependencies to see the impact on other objects. For example, before you remove a session, you can find out which workflows use the session. You can view dependencies for repository objects in the Repository Manager, Workflow Manager, and Designer tools.

Step-1 First select mapping and then, Go to Analyze menu in menu bar and click on View Dependencies..



Step-2 Here, You can select options and then click OK Button.



Step-3 Here, This is complete dependencies for this mapping

