



Informatica Power Center 9.0.1

Building Financial Data Mode - Lab#16 Store Procedure Based Transformation

Description:

BISP is committed to provide BEST learning material to the beginners and advance learners. In the same series, we have prepared a complete end-to end Hands-on Guide for building financial data model in Informatica. The document focuses on how the real world requirement should be interpreted. The mapping document template with very simplified steps and screen shots makes the complete learning so easy. The document focuses on using store procedure. **Join our professional training program and learn from experts.**

History:

Version	Description Change	Author	Publish Date
0.1	Initial Draft	Upendra Upadhyay	12th Aug 2011
0.1	Review#1	Amit Sharma	17 th Aug 2011

TABLE OF CONTENTS

S.NO	TITLE	PAGE. NO.
1	<u>Introduction.</u>	3-4
2	<u>Creating Repository & Folder.</u>	5-8
3	<u>Import Source Database and Target system.</u>	9-14
4	<u>Create Mapping and Apply Store Procedure as Transformation.</u>	15-19
5	<u>Create Workflow.</u>	20-25
6	<u>Workflow Monitor & Review data.</u>	26-27

Introduction

Store Procedure Transformation.

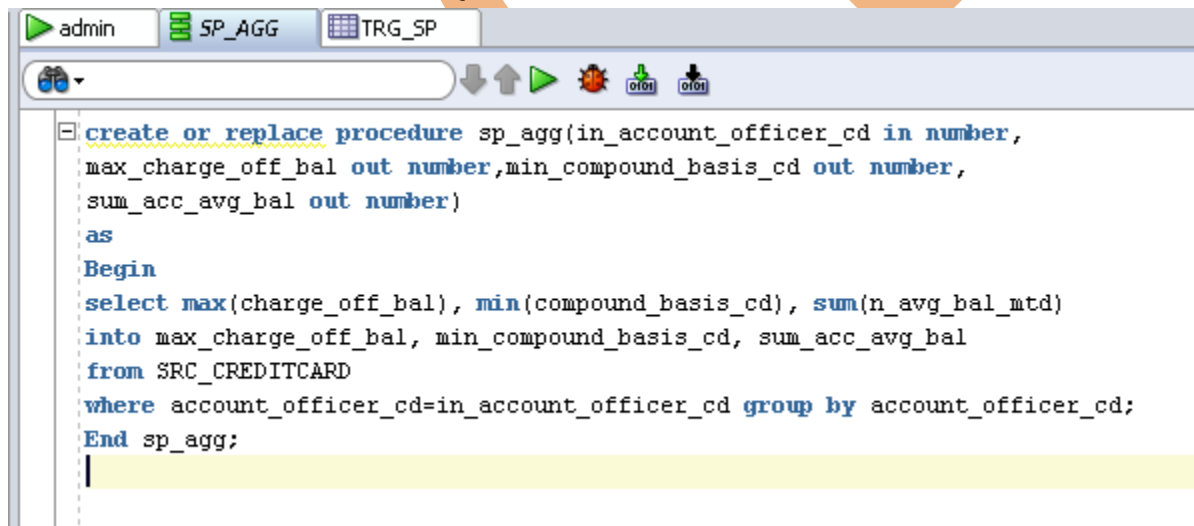
A store procedure transformation is passive and connected or unconnected transformation. Stored Procedure transformation is an important tool for populating and Maintaining databases. Database administrators create stored procedures to Automate tasks that are too complicated for standard SQL statements.

Description

A Source Qualifier Transformation.

- Used Oracle 11g as a source database
- Used Oracle 11g as a target database.

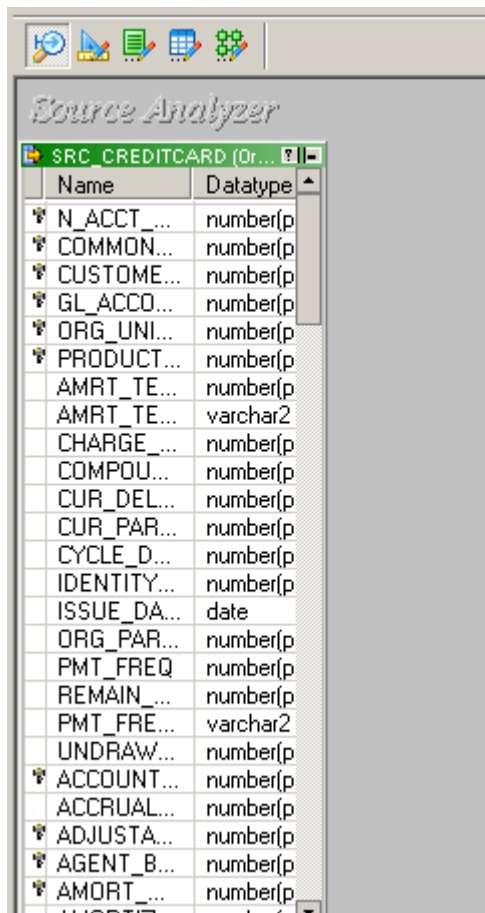
➤ First Create This PL/SQL in Oracle .



```
create or replace procedure sp_agg(in_account_officer_cd in number,
max_charge_off_bal out number,min_compound_basis_cd out number,
sum_acc_avg_bal out number)
as
Begin
select max(charge_off_bal), min(compound_basis_cd), sum(n_avg_bal_mtd)
into max_charge_off_bal, min_compound_basis_cd, sum_acc_avg_bal
from SRC_CREDITCARD
where account_officer_cd=in_account_officer_cd group by account_officer_cd;
End sp_agg;
```

- Import Table
- Create Mapping
- Create Workflow
- Execute Mapping and review data.

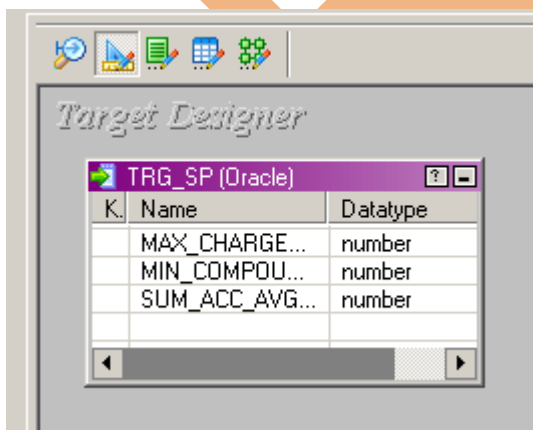
➤ **Source Table**



The screenshot shows the 'Source Analyzer' window for the 'SRC_CREDITCARD' table. The table structure is as follows:

Name	Datatype
N_ACCT_...	number(p)
COMMON...	number(p)
CUSTOME...	number(p)
GL_ACCO...	number(p)
ORG_UNI...	number(p)
PRODUCT...	number(p)
AMRT_TE...	number(p)
AMRT_TE...	varchar2
CHARGE_...	number(p)
COMPOU...	number(p)
CUR_DEL...	number(p)
CUR_PAR...	number(p)
CYCLE_D...	number(p)
IDENTITY...	number(p)
ISSUE_DA...	date
ORG_PAR...	number(p)
PMT_FREQ	number(p)
REMAIN_...	number(p)
PMT_FRE...	varchar2
UNDRAW...	number(p)
ACCOUNT...	number(p)
ACCRUAL...	number(p)
ADJUSTA...	number(p)
AGENT_B...	number(p)
AMORT_...	number(p)

Target Table



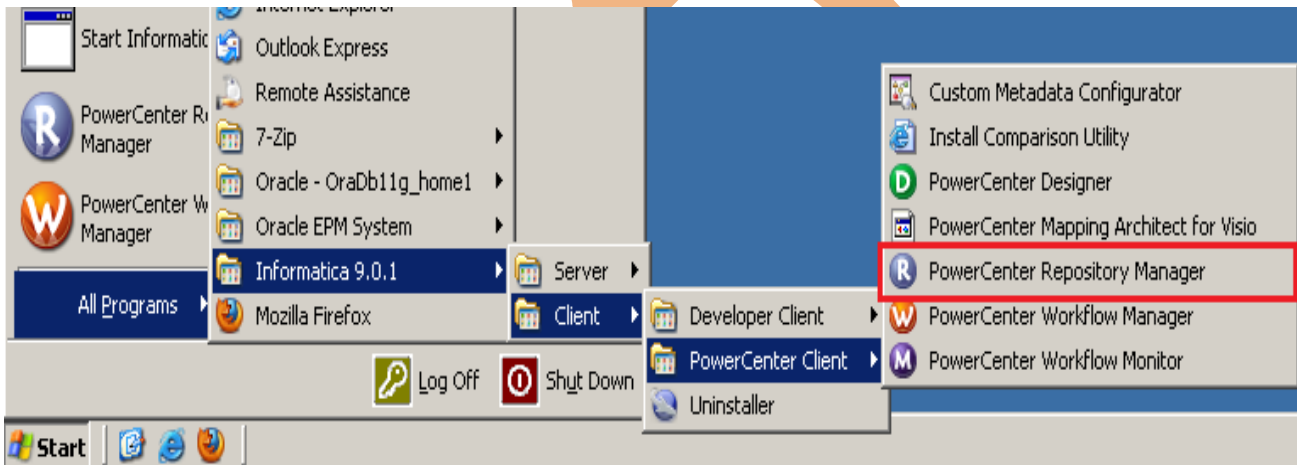
The screenshot shows the 'Target Designer' window for the 'TRG_SP' table. The table structure is as follows:

K.	Name	Datatype
	MAX_CHARGE...	number
	MIN_COMPOU...	number
	SUM_ACC_AVG...	number

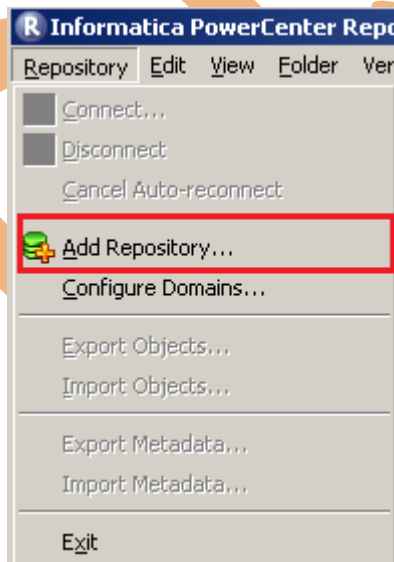
Creating Repository and Folder

Creating Repository & Connecting it.

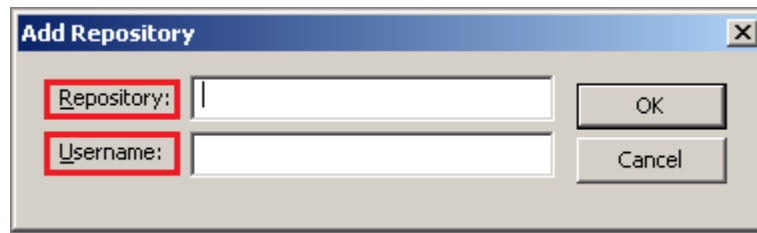
Step-1 First create repository, Click on Start -> All Programs -> Informatica 9.0.1 -> Client -> Power Center Client -> Power Center Repository Manager.



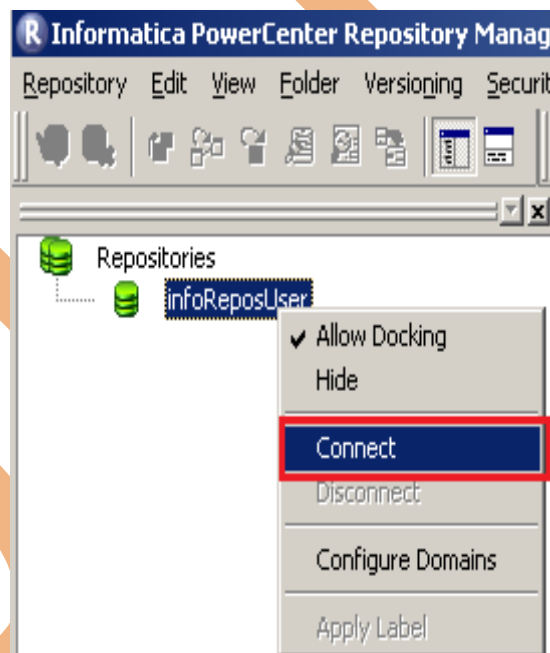
Step-2 Then click on Repository Menu and click on Add Repository.



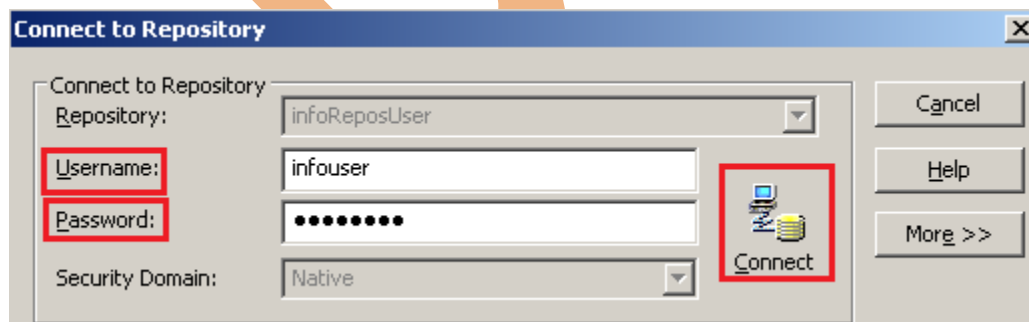
Step-3 Give information like Repository Name and Username. Then click on ok button and repository created successfully.



Step-4 Now connect repository. Right click on newly created repository and click on connect.

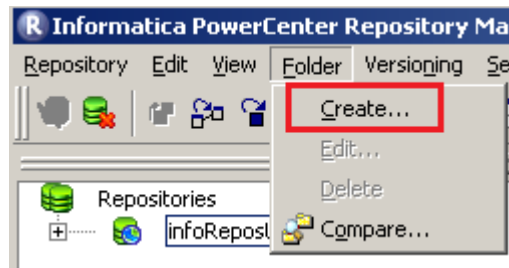


Step-5 Give Username & password and click on Connect.

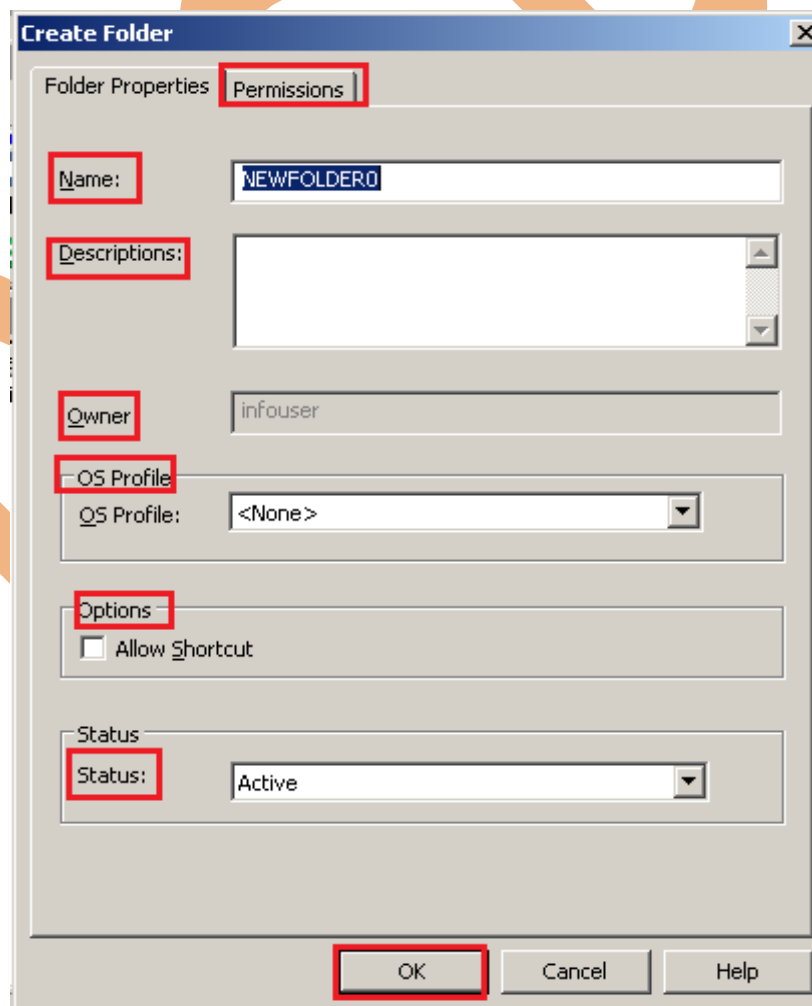


Creating Folder.

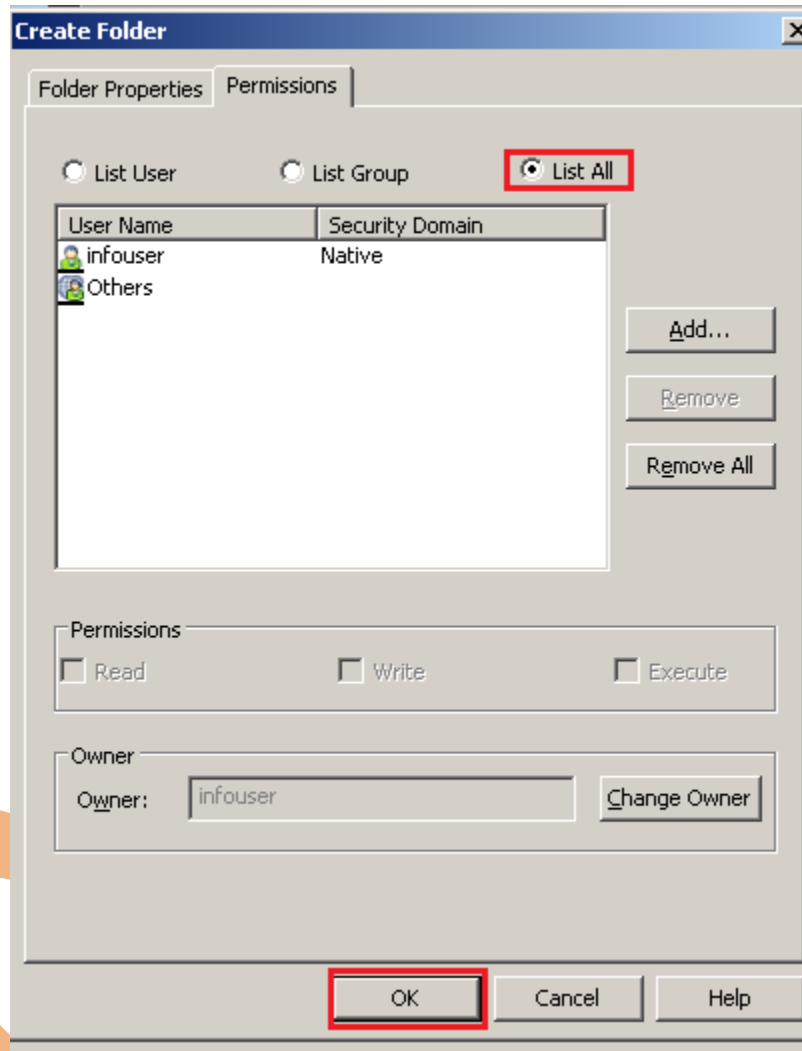
Step-1 Go to Informatica Power Center Repository Manager and click on Folder Menu and click on Create.



Step-2 Specify Name of Folder, Description, Owner, OS Profile, Options, Status and got to permissions tab.



Step-3 This is permission tab to give permission for this folder.

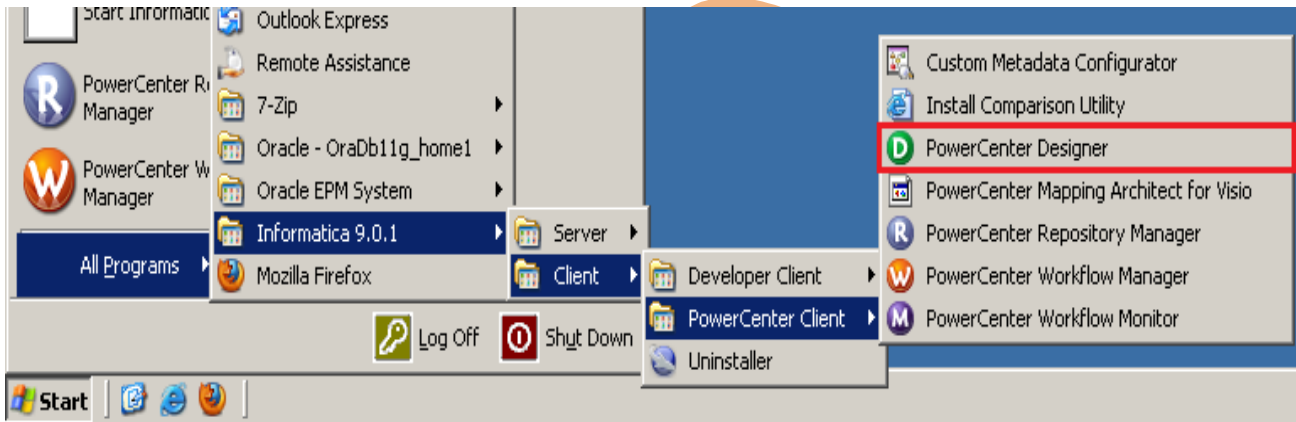


Step-4 This is newly created Folder

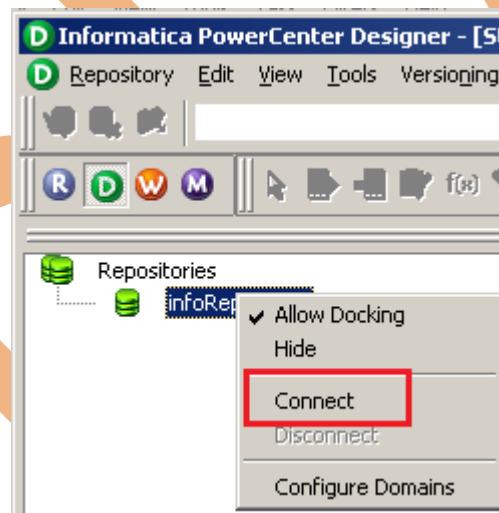
Name	Comments	Is Shared	Owner	OS Profile
bispInfo	-	no	infouser	-
Transformation	-	no	infouser	-

Importing Source and Target Table

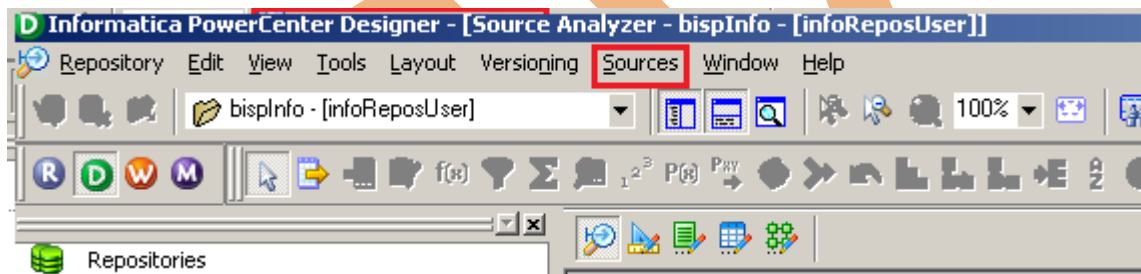
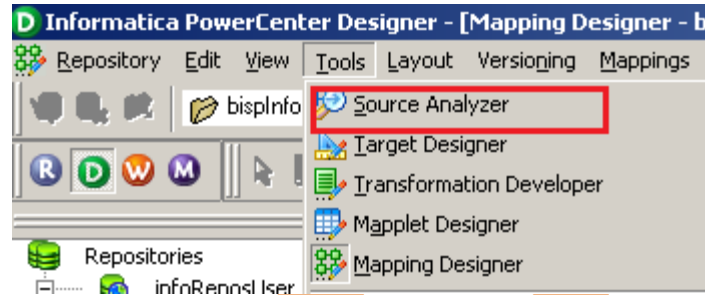
Step-1 Click on Start -> All Programs -> Informatica 9.0.1 -> Client -> Power Center Client -> Power Center Designer..



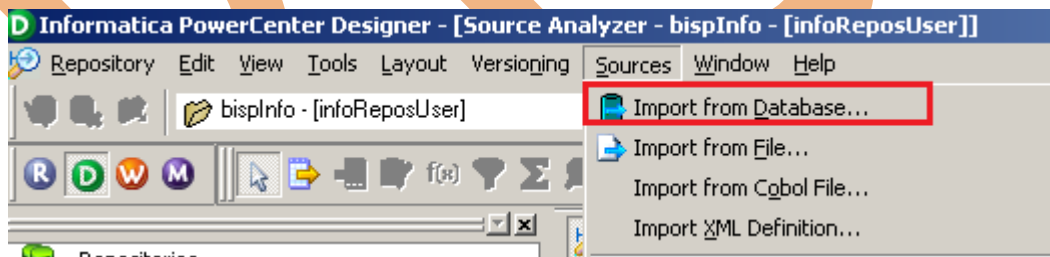
Step-2 Then Connect to Repository in Informatica Power Center Designer Right click on repository name and click on Connect.



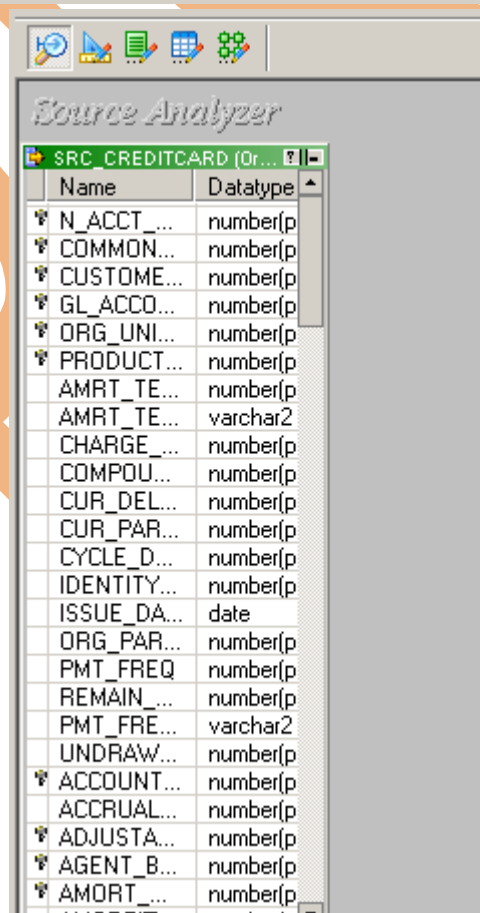
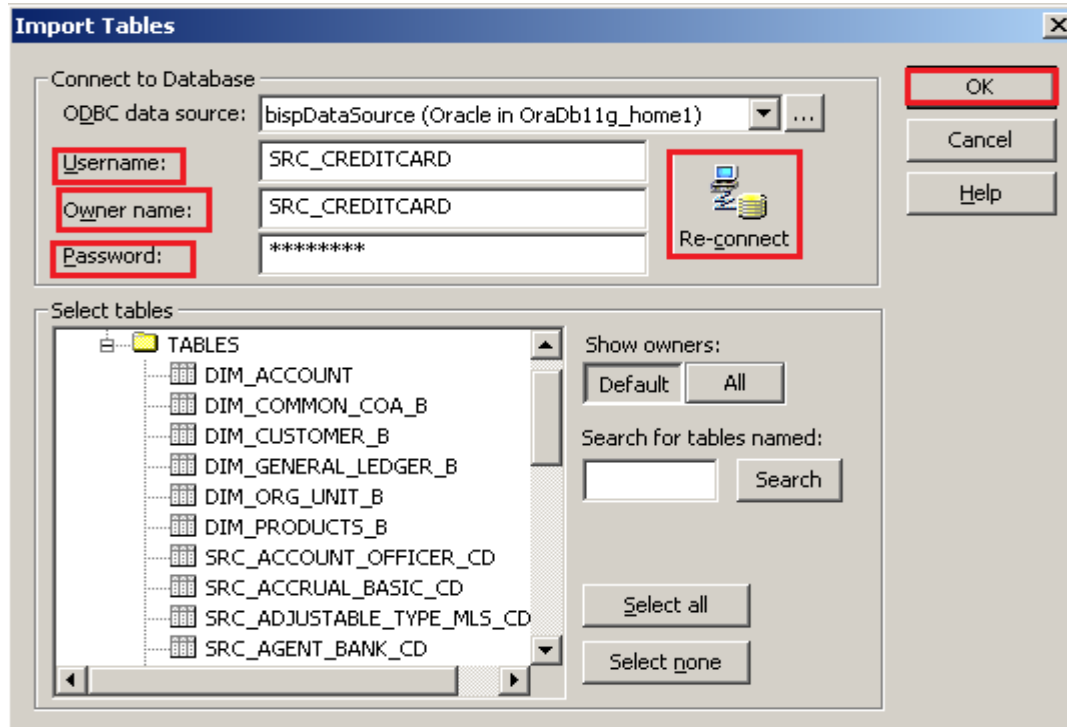
Step-3 Go to Tools Menu and click on Source Analyzer to import source table. And then go to Sources Menu in Informatica Power Center Designer.



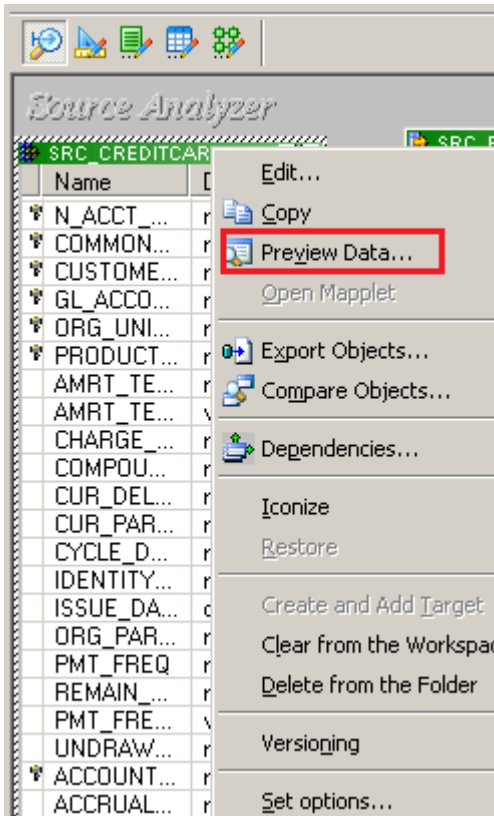
Step-4 And then select Source menu and click on Import from database



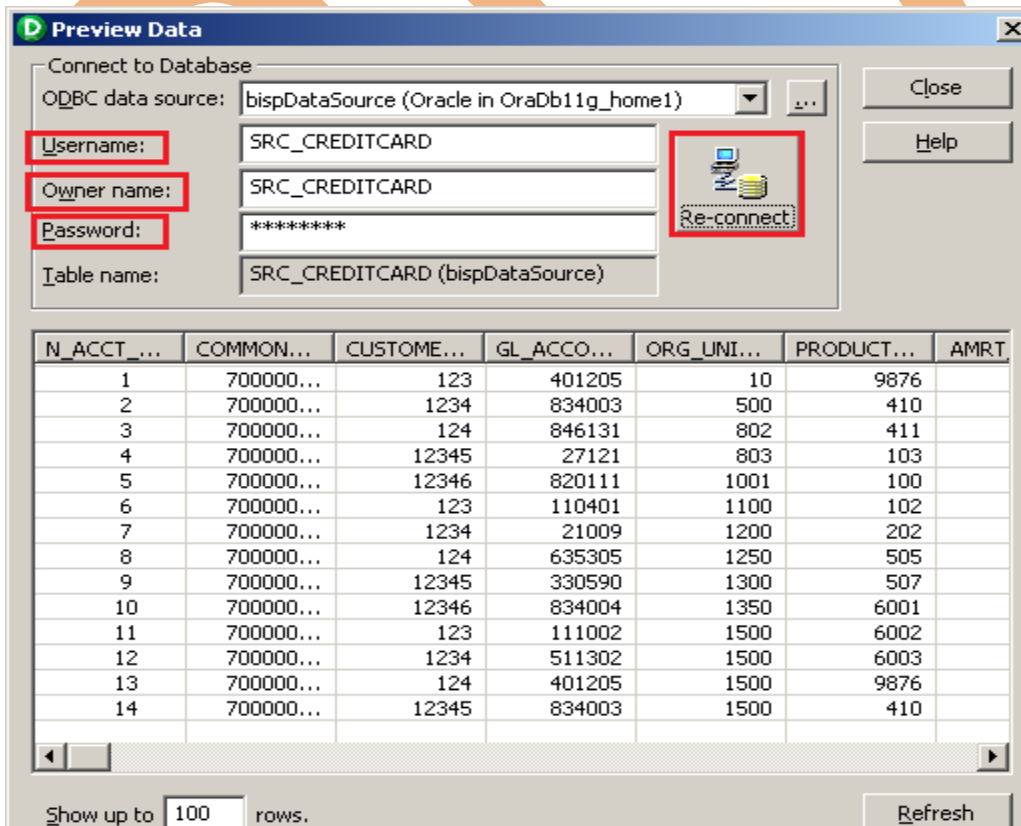
Step-5 Specify Username, Owner name, password and then connect. Then select source table and click OK.



Step-6 View data in source analyzer, Right click on SRC_CREDITCARD and select Preview Data.

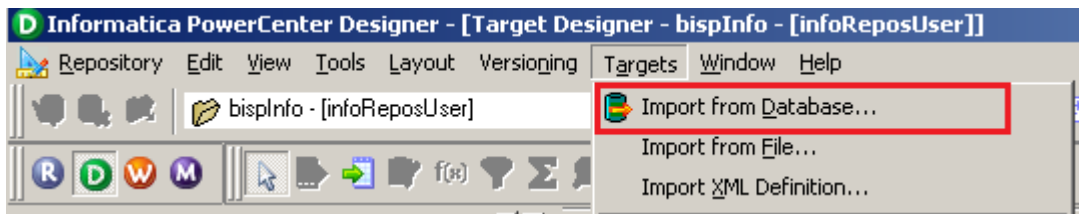


Step-7 Specify Username and Password and connect it. Then Close it.

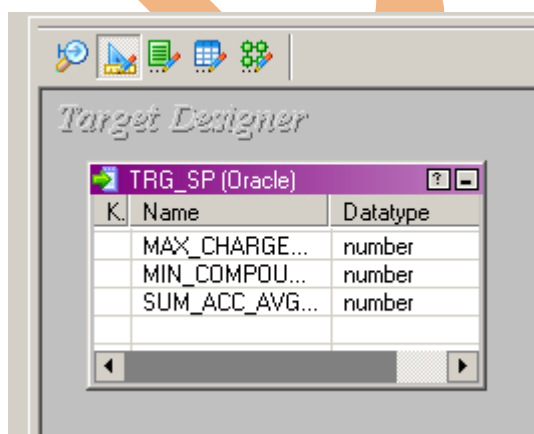
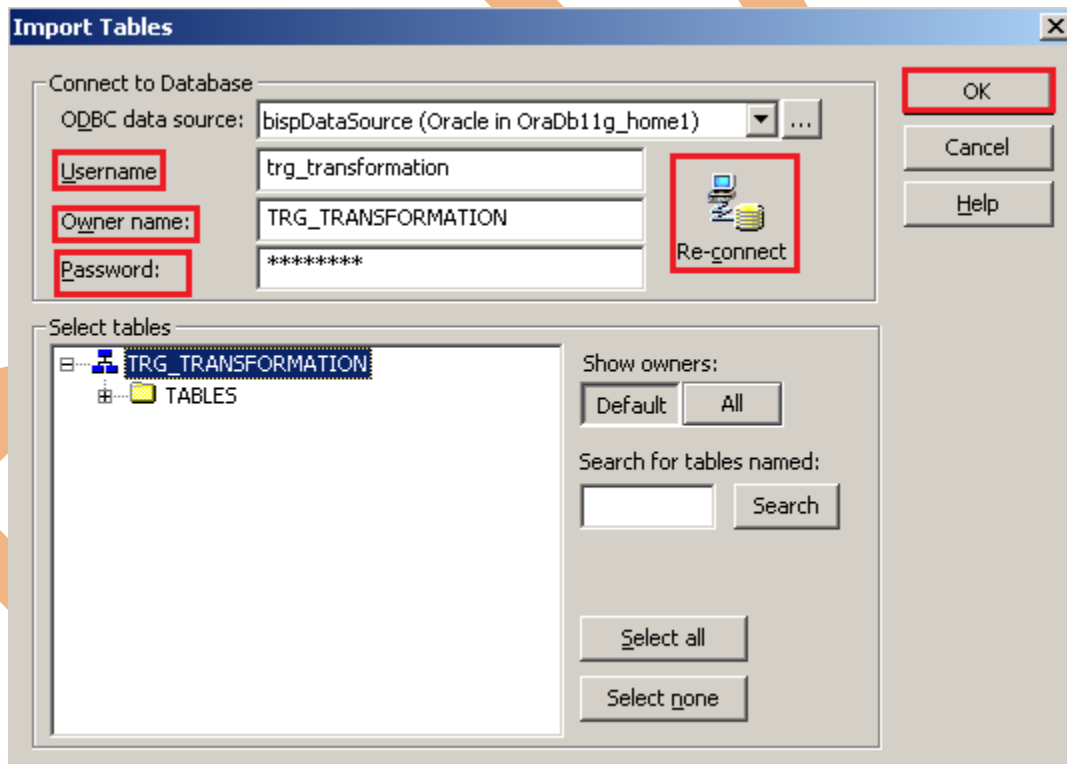


Step-8 Now click on Target Designer.

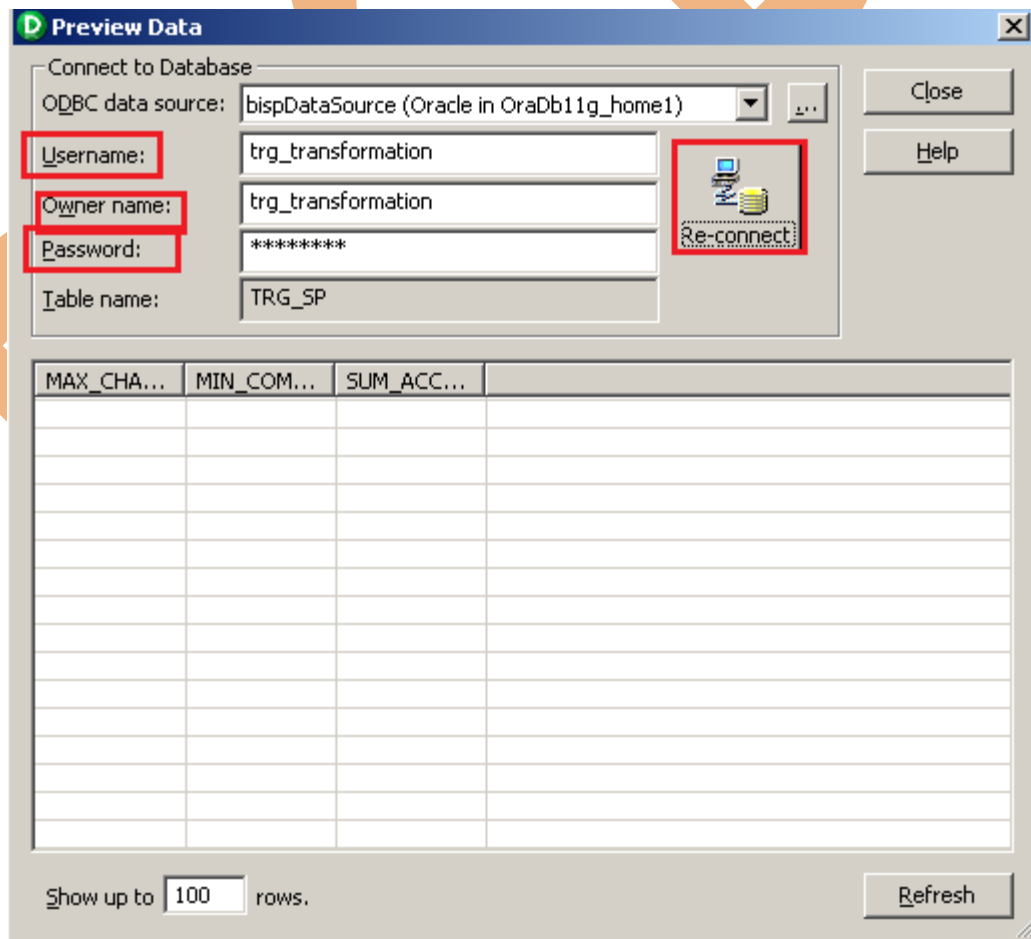
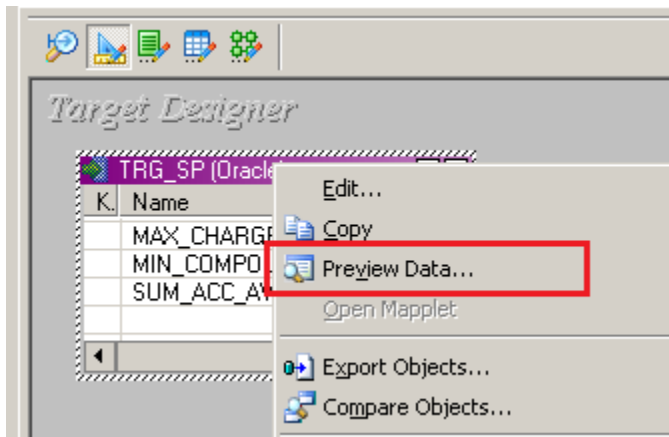
Step-9 And then select Target menu and click on Import from database to import target table.




Step-10 Specify Username, Owner name, password and then click on connect and then select table and then OK.

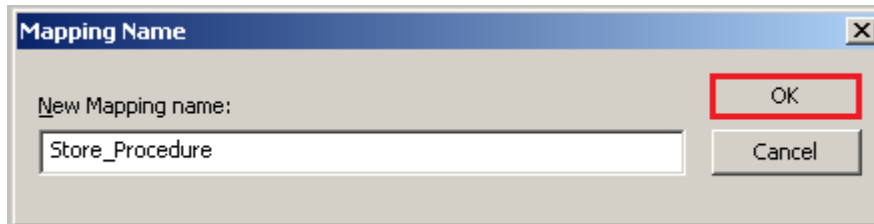


Step-11 To view data select table and Right click on that table after that specify Username and Password and connect it. Then Close it.

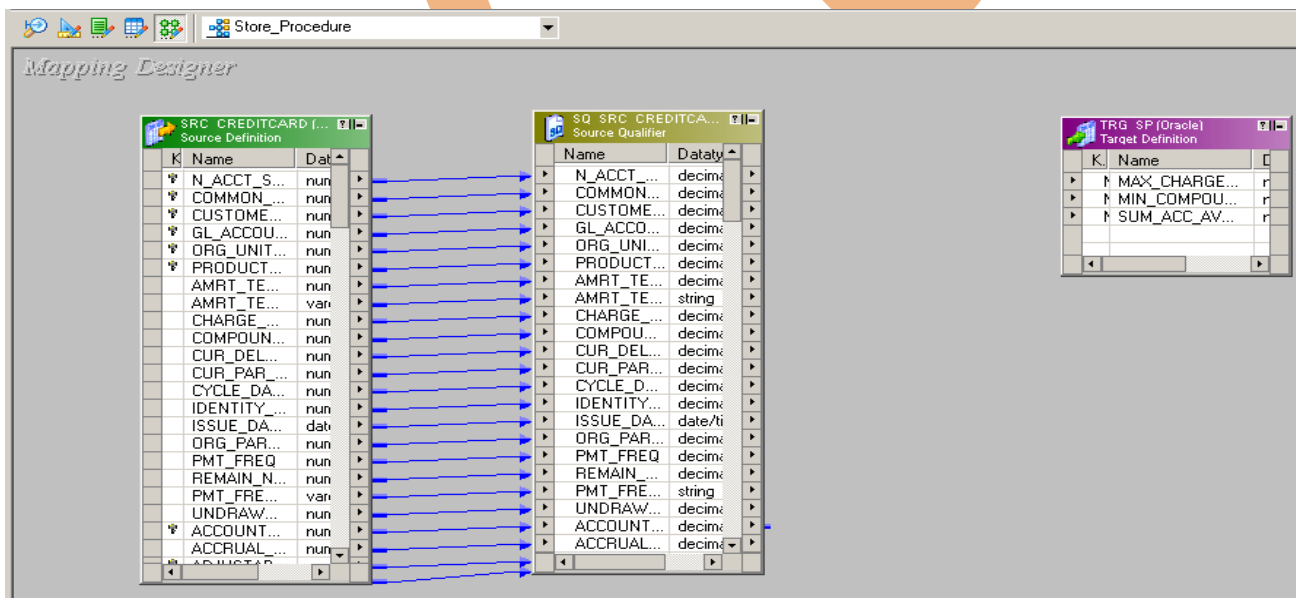


CREATE MAPPING AND APPLY STORE PROCEDURE BASED TRANSFORMATION

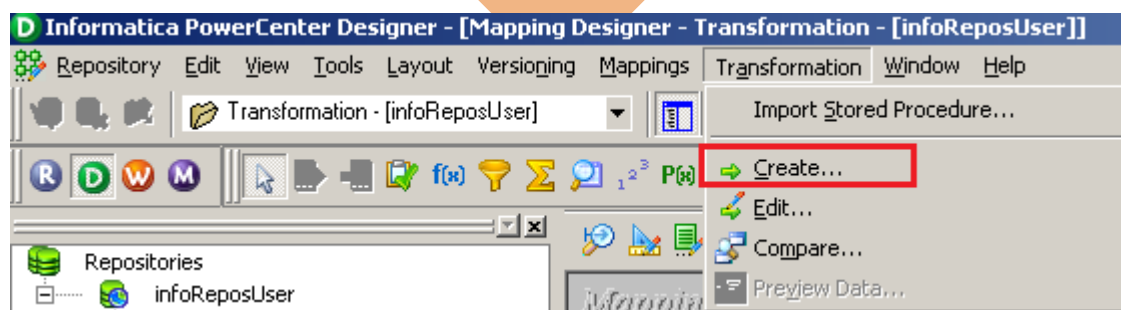
Step-1 Go to Mapping Designer  and Create New Mapping and then name of mapping and click OK.



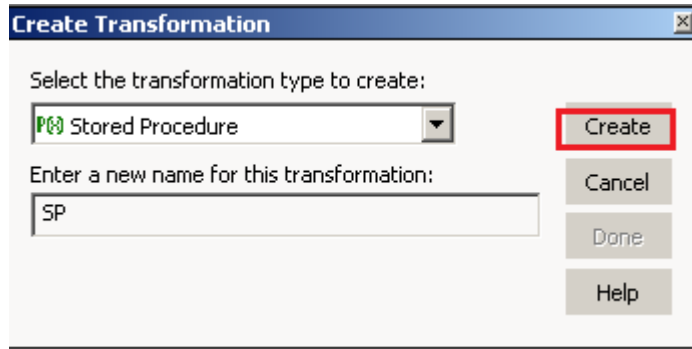
Step-2 Then drag and drop source and target data in Mapping Designer.



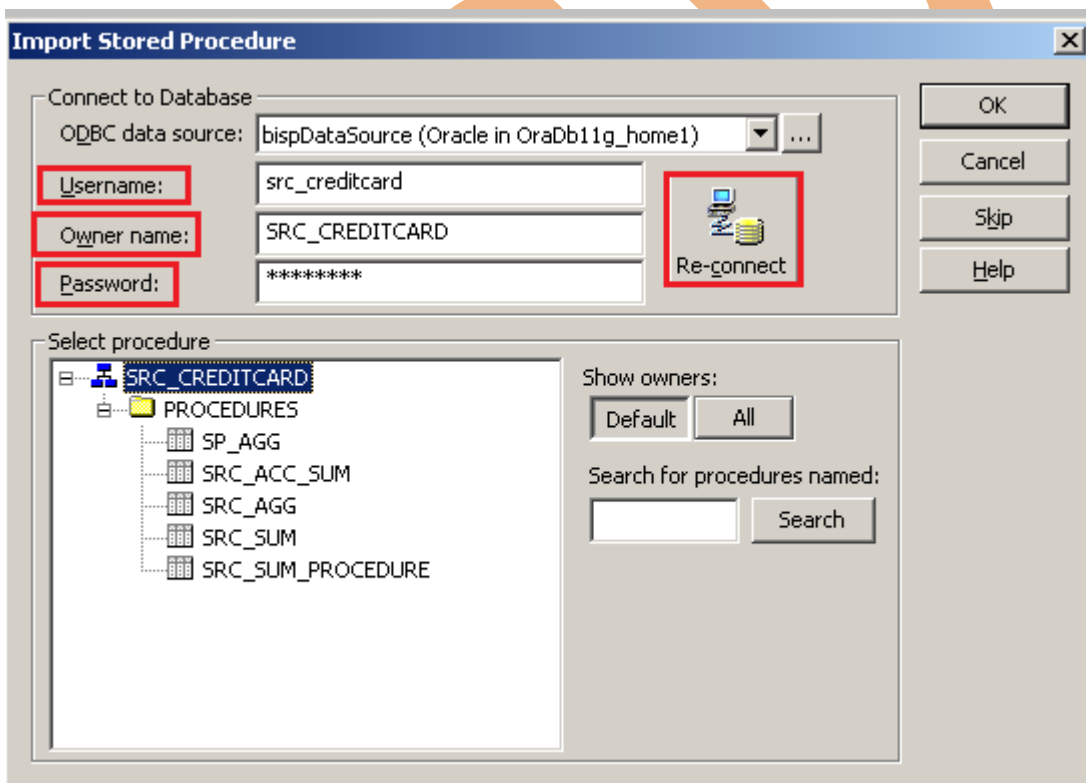
Step-3 Then create transformation, Click on Transformation menu and click on Create

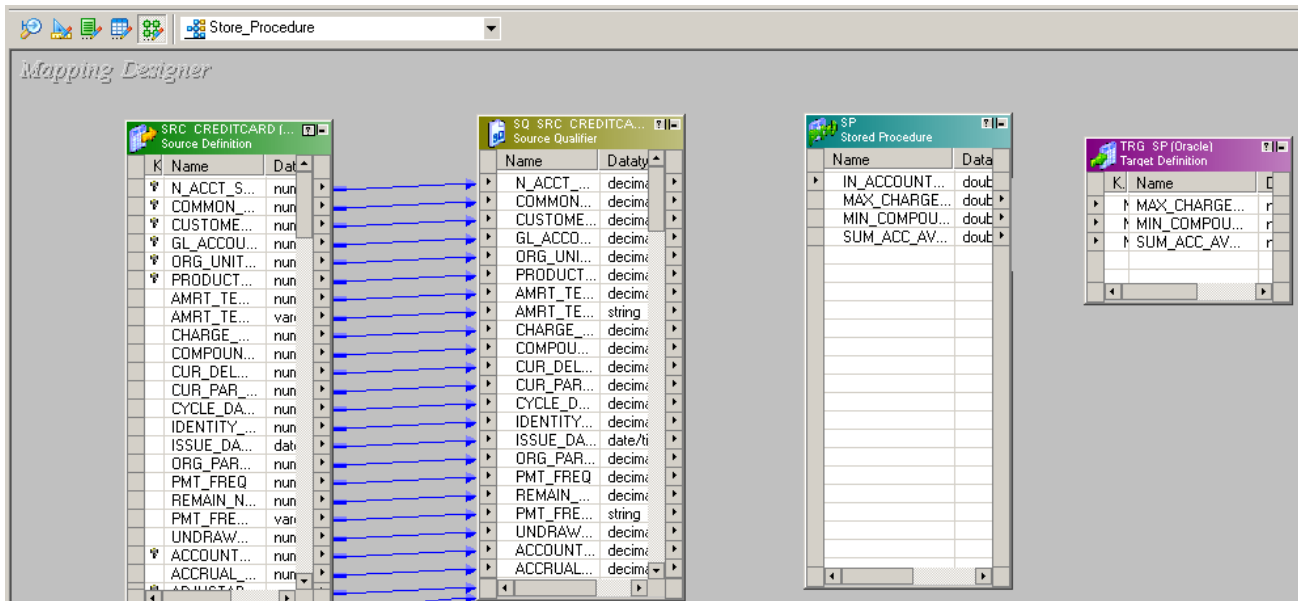


Step-4 Then select transformation and click on Create.

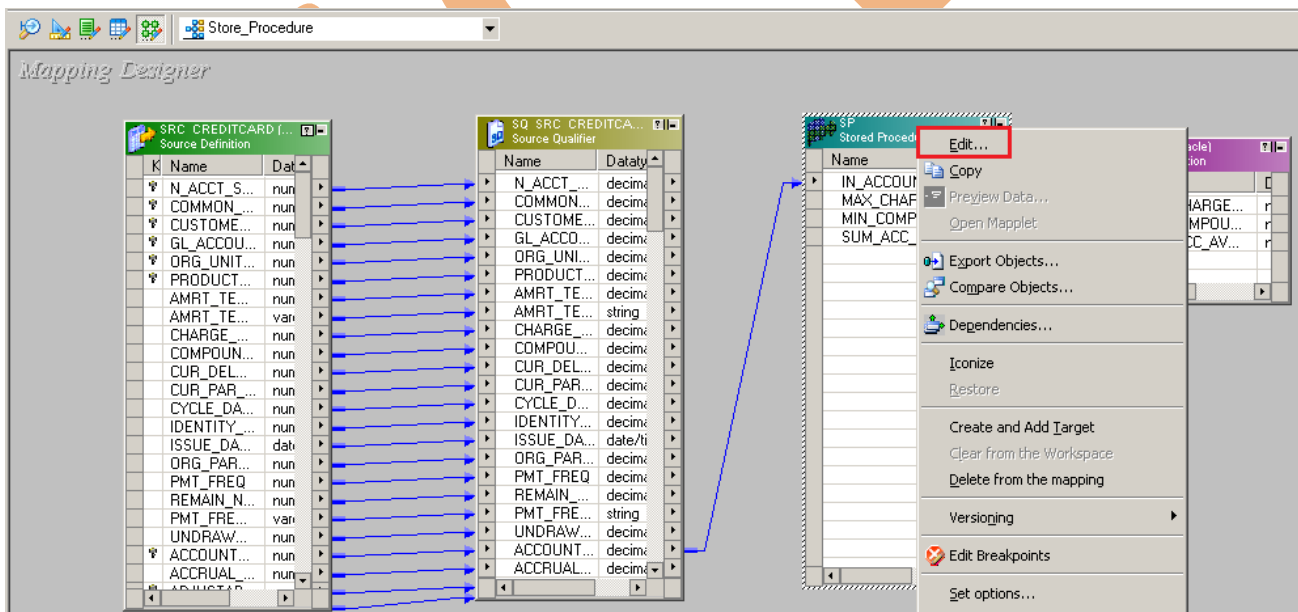


Step-5 Then select procedure, Specify Username and Password and click on Connect and select procedure.

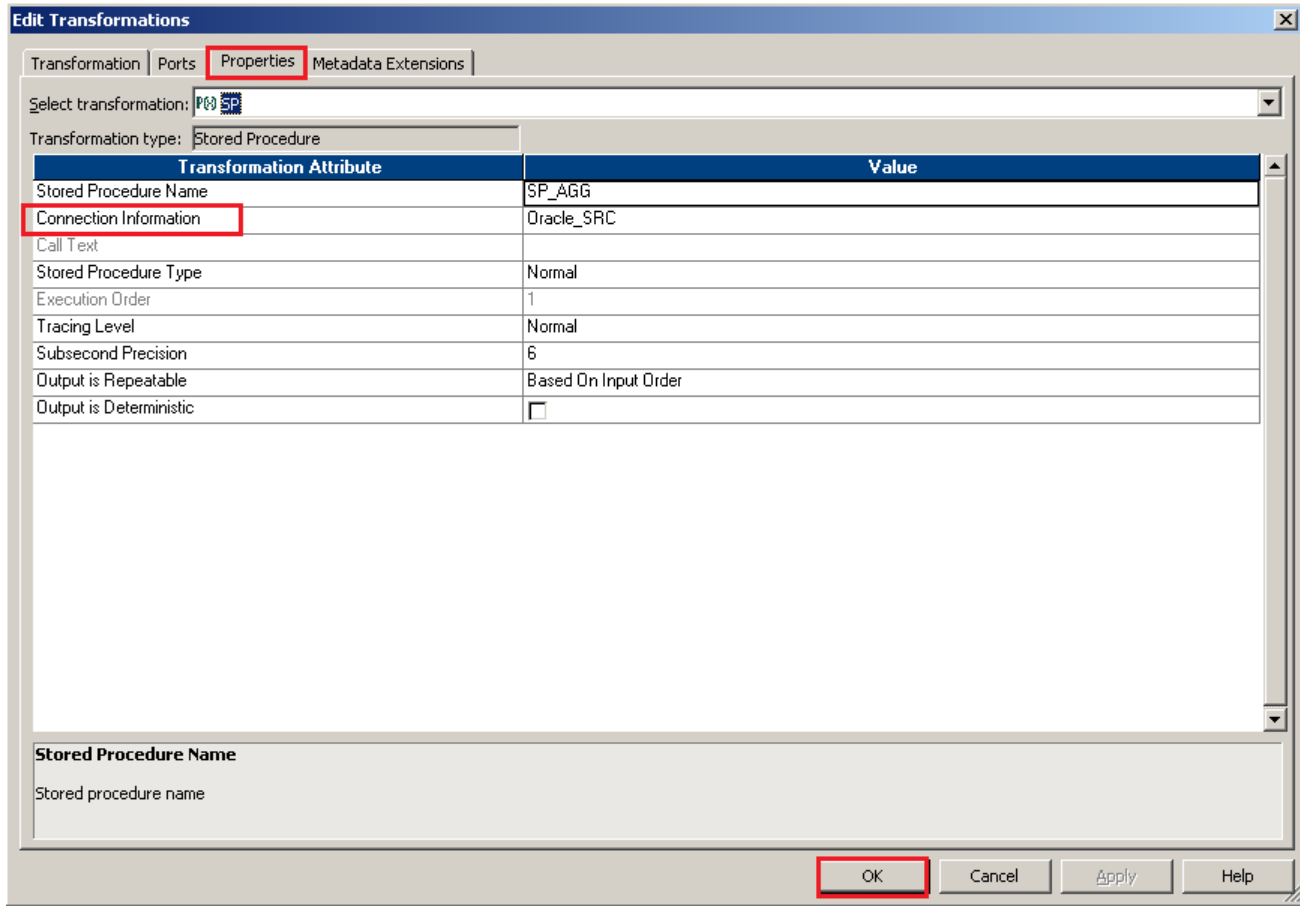




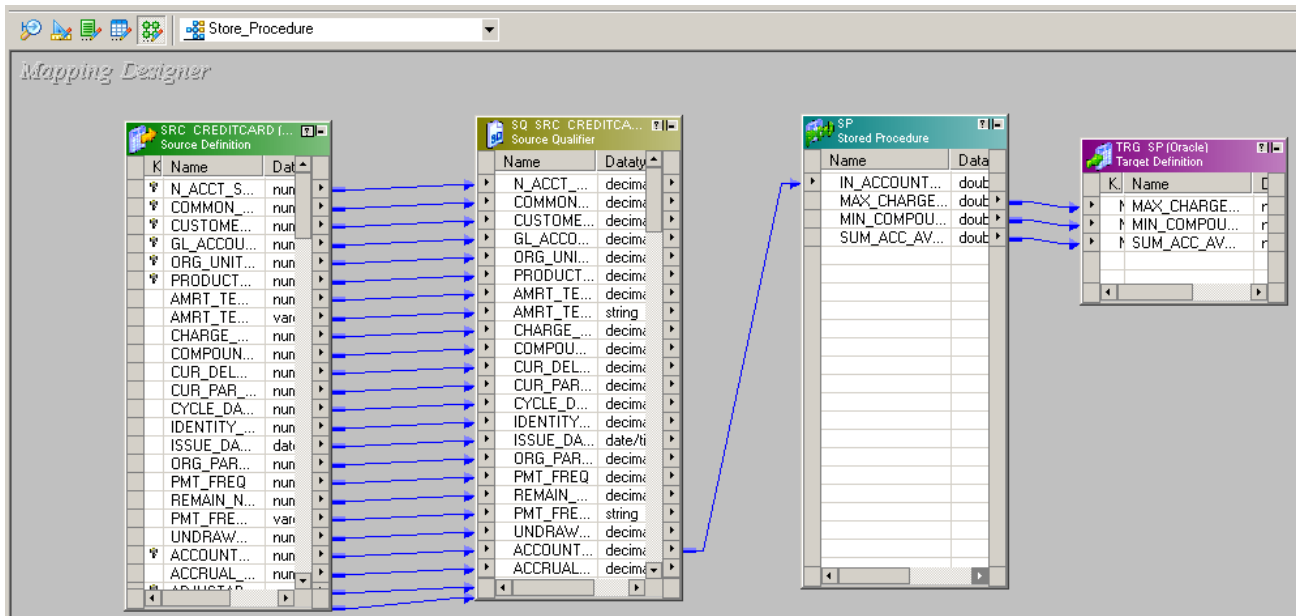
Step-6 Then right click on Store Procedure and select Edit.



Step-7 Go to Properties tab and select Connection.



Step-8 Create Mapping.



Step-9 And then save it (ctrl+s) and check mapping is VALID.

12/03/2012 16:36:31 *** Saving... Repository infoReposUser, Folder Transformation_Example

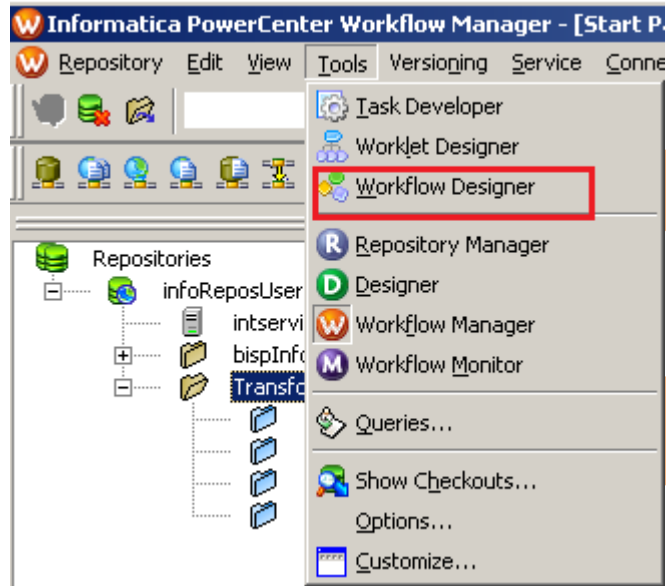
```

Validating transformations of mapping Store_Procedure...
...transformation validation completed with no errors.
Validating data flow of mapping Store_Procedure...
...data flow validation completed with no errors.
Parsing mapping Store_Procedure...
...parsing completed with no errors.
***** Mapping Store_Procedure is VALID *****
mapping Store_Procedure updated.

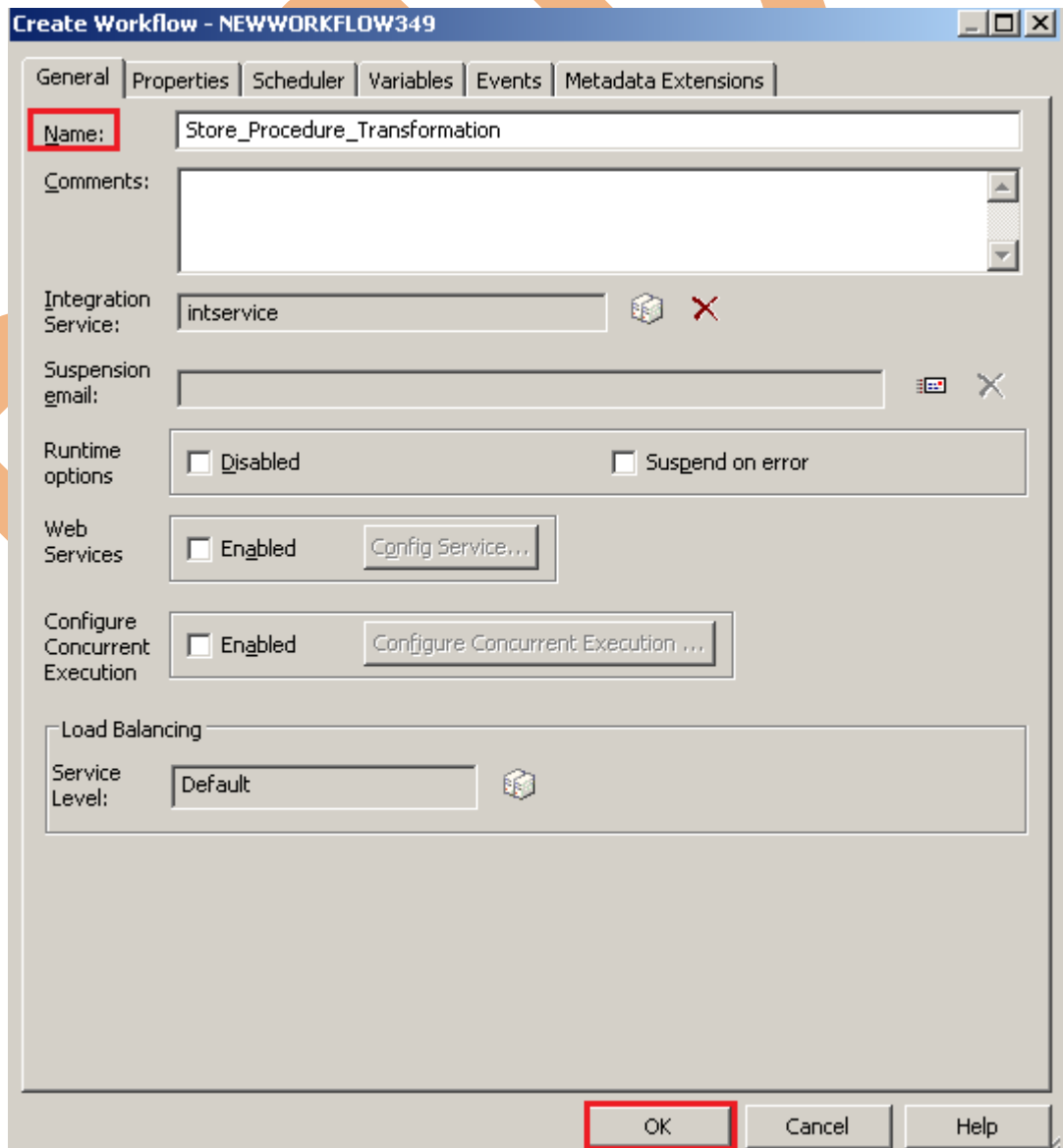
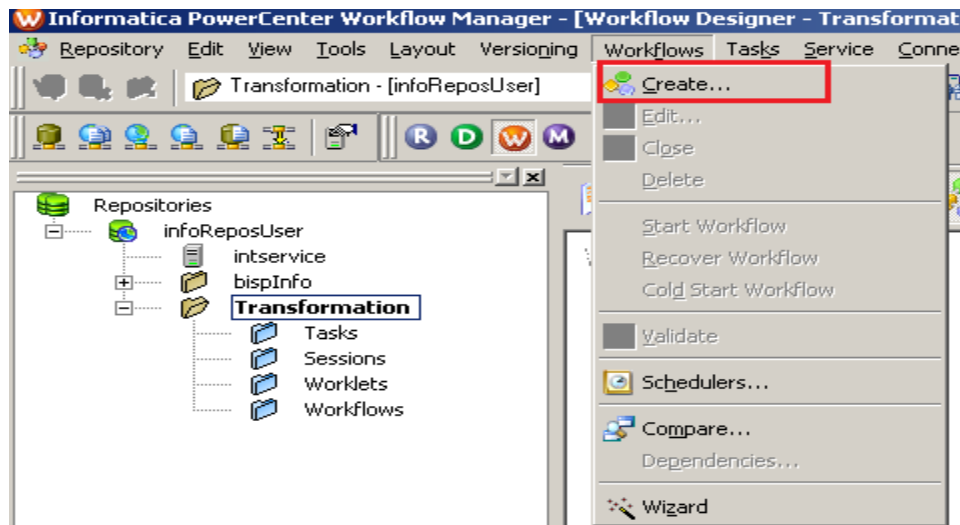
```

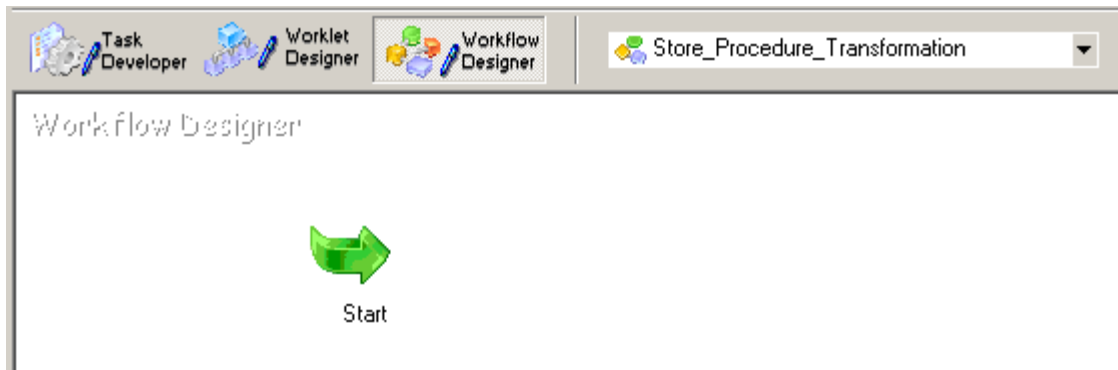
CREATE WORKFLOW

Step-1 Now go to Informatica Power Center Workflow Manager, and go to Tools menu and select Workflow Designer.

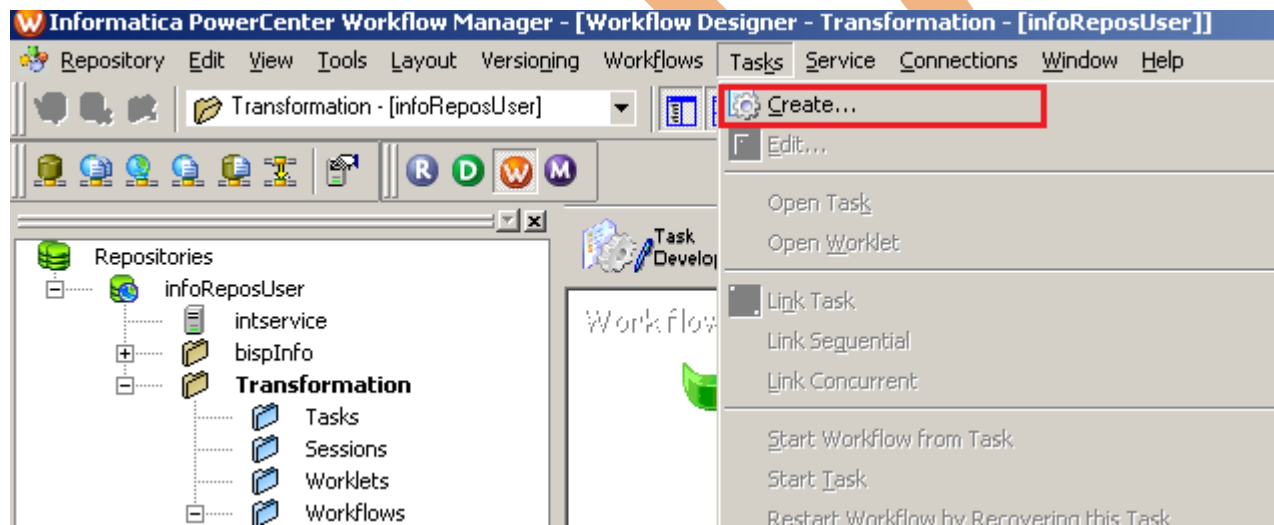


Step-2 Now to create workflows, Go to Workflows menu and select Create. After that Name of workflow and click OK buttons.

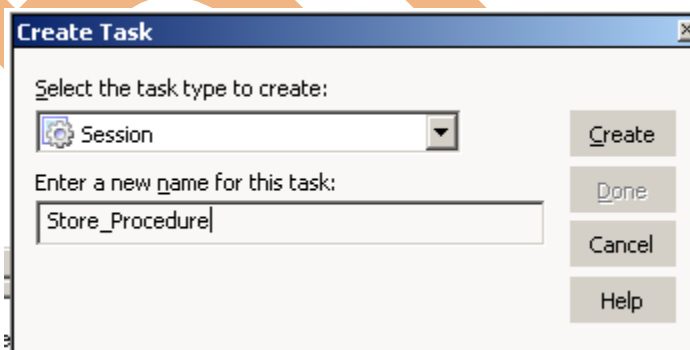




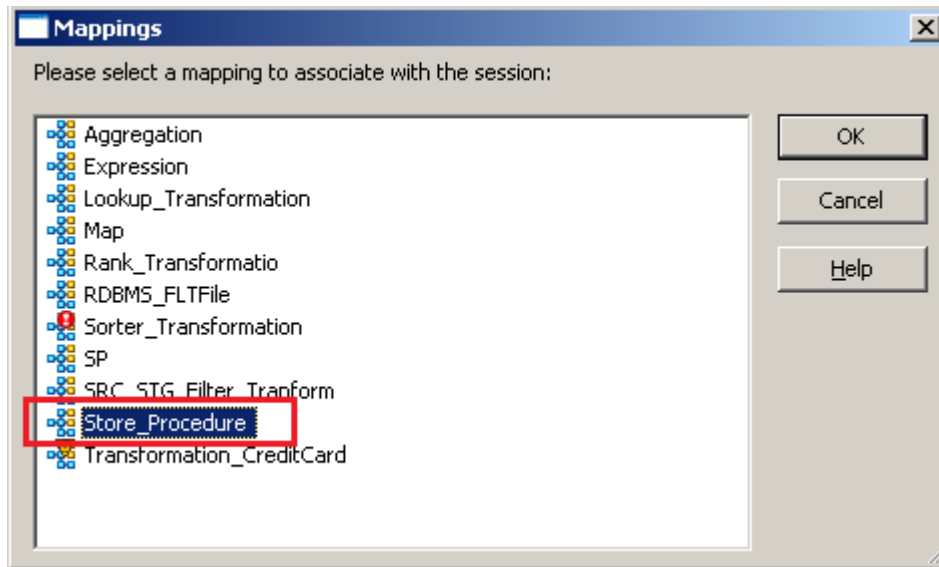
Step-3 Now create Task, Go to Tasks Menu and click Create.



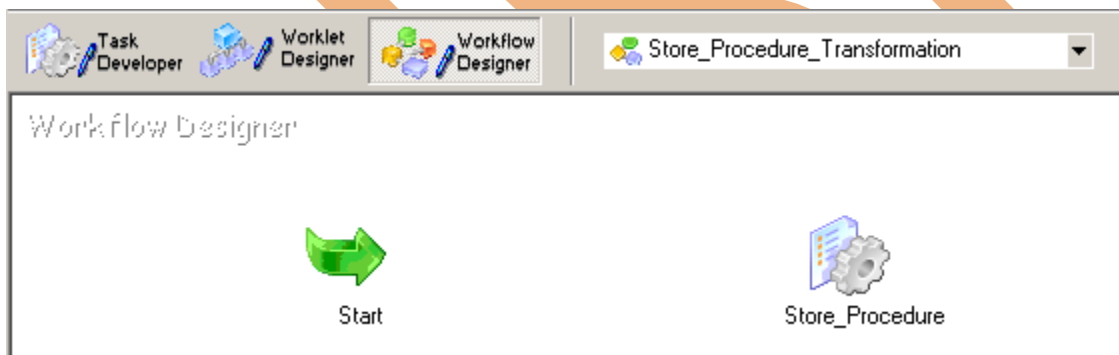
Step-4 Now select session and insert Name of task.



Step-5 Select Mapping to associate with the session.



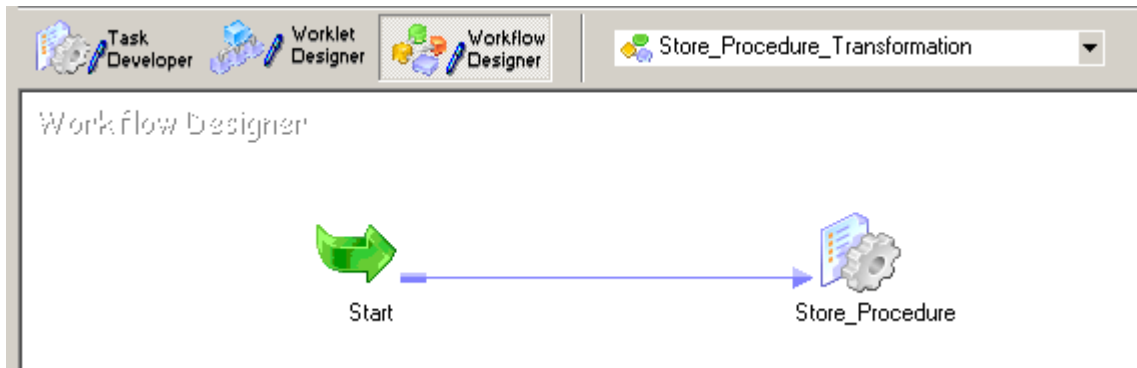
Step-6 Workflow Designer Window.



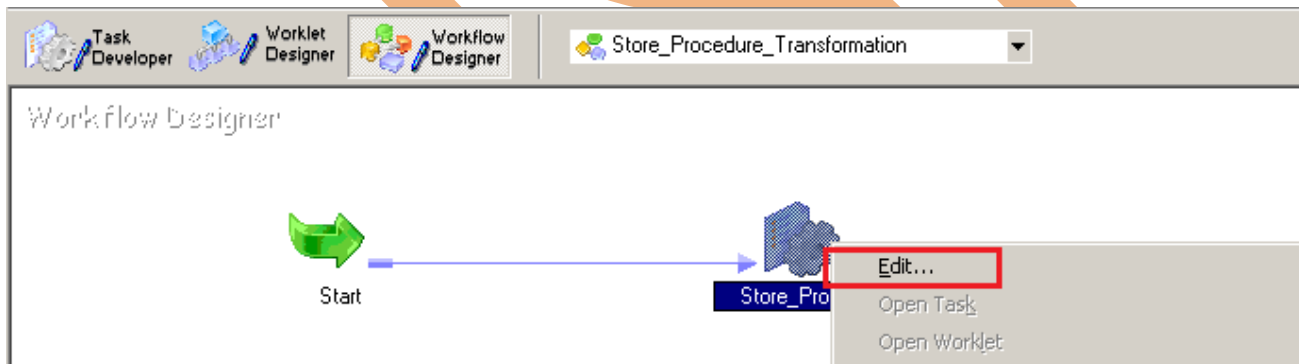
Step-7 Now create flow B/W Workflow to Task. Select Line Task and link to Start to Filter.



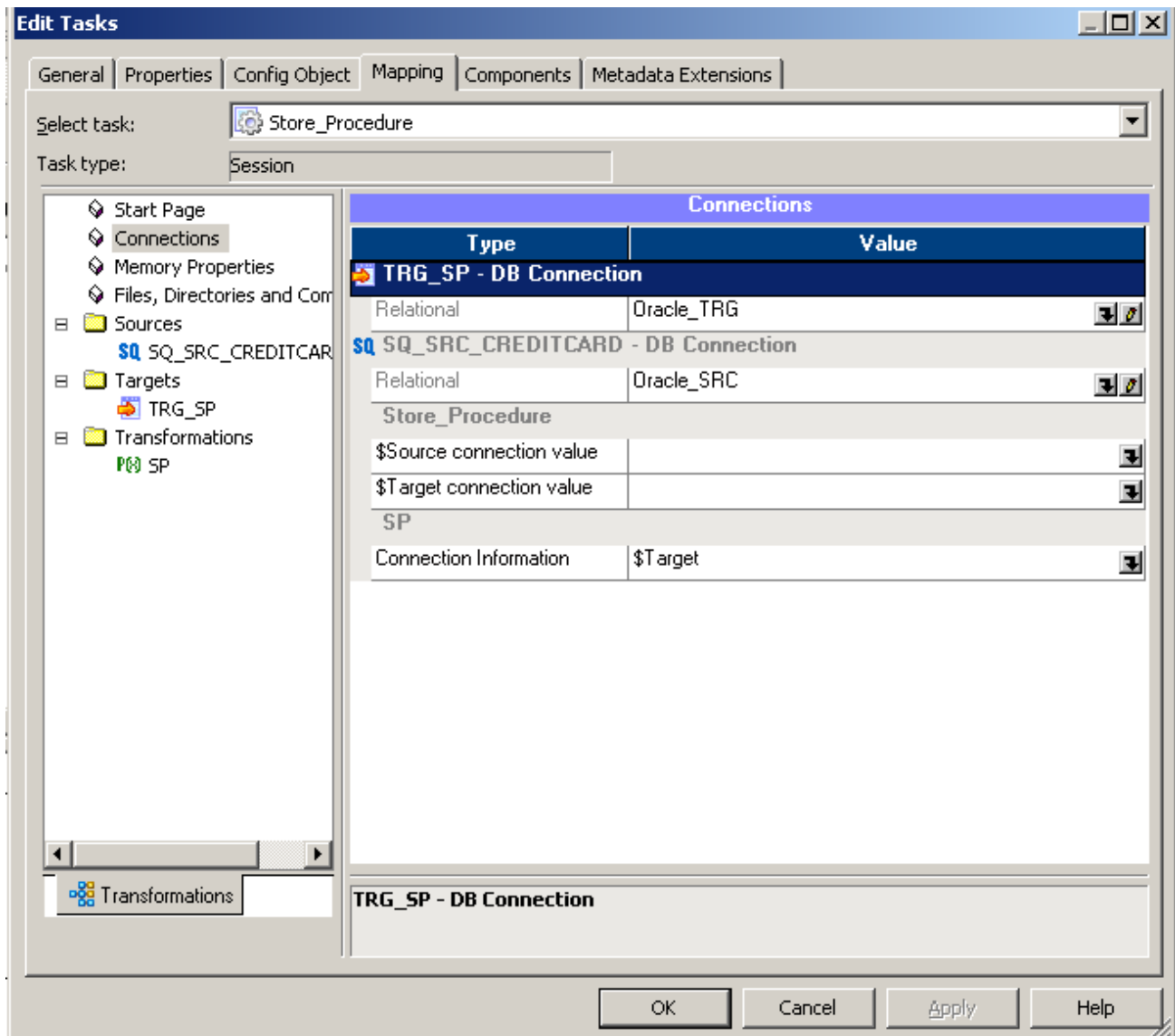
Step-8 Work Designer Windows



Step-9 Now Configure Connection to Source and Target, Then Right Click on Store_Procedure and select Edit, Then Click Mapping tab and configure connection for your source and target table schema in oracle 11g RDBMS. And then click OK.



Step-10 Select DBConnection for Source and Target Relation Database.



Step-11 Now save (ctrl+s) this workflow and check it.

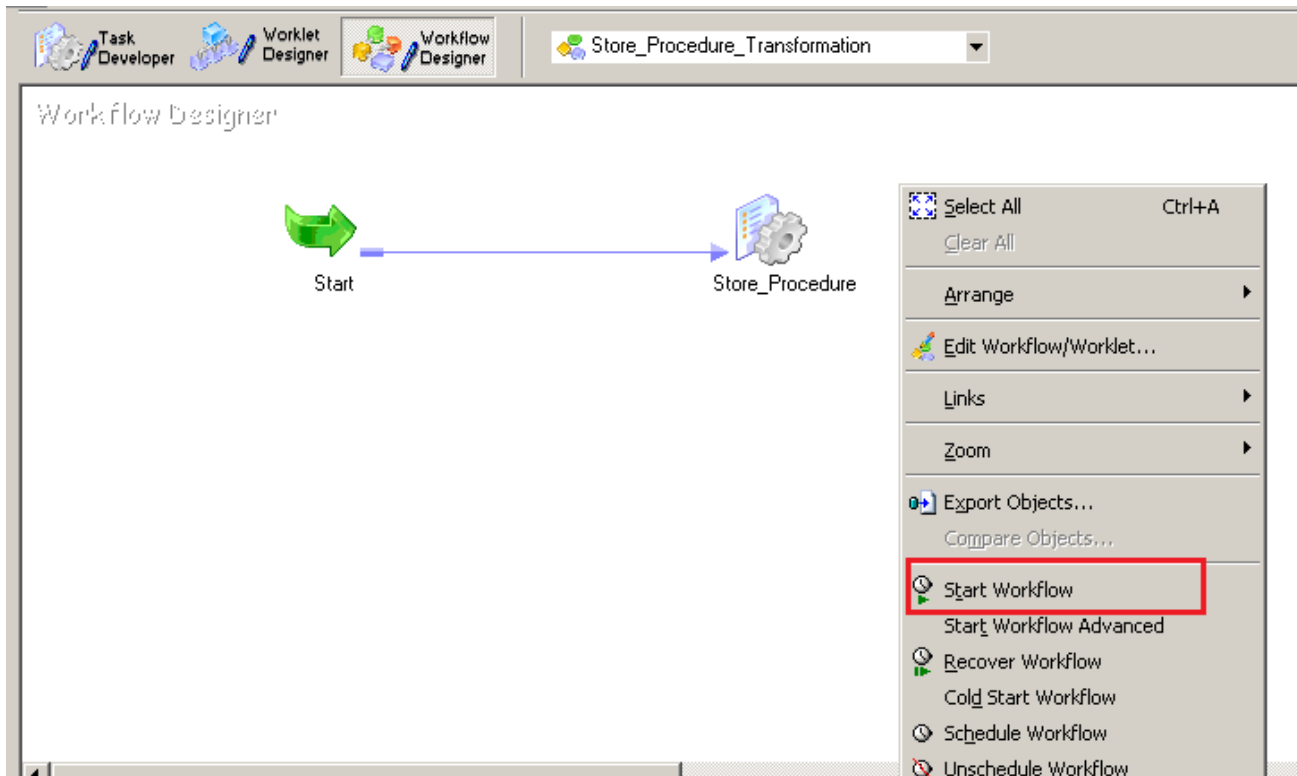
Validating the flow semantics of Workflow Store_Procedure_Transformation...
...flow semantics validation completed with no errors.

Validating tasks of Workflow Store_Procedure_Transformation...
...Workflow Store_Procedure_Transformation tasks validation completed with no errors.

***** Workflow Store_Procedure_Transformation is VALID *****
|
Workflow Store_Procedure_Transformation updated.

WORKFLOW MONITOR AND VIEW TARGET DATA

Step-1 Now Start Workflow, Right click on Workflow Designer Window and Click on Start Workflow.



Step-2 Check session and log in Informatica PowerCenter Workflow Monitor.

Task Name	Start Time	End Time	Status
Store_Procedure_Transformation	12/3/2012 4:36:37 PM	12/3/2012 4:36:39 PM	Succeeded
Start	12/3/2012 4:36:37 PM	12/3/2012 4:36:37 PM	Succeeded
Store_Procedure	12/3/2012 4:36:37 PM	12/3/2012 4:36:39 PM	Succeeded

Log Events for Session: Store_Procedure

Save As... Copy Find... Refresh

Severity	Timestamp	Node	Thread	Message Co...	Message
INFO	12/3/2012 4:36:38 PM	node01_mitest	WRITER_1_*_1	WRT_8035	Load complete time: Mon Dec 03 16:36:38 2012 LOAD SUMMARY =====
					WRT_8036 Target: TRG_SP (Instance Name: [TRG_SP]) WRT_8038 Inserted rows - Requested: 14 Applied: 14 Rejected: 0 Affected: 14
INFO	12/3/2012 4:36:38 PM	node01_mitest	WRITER_1_*_1	WRT_8043	*****END LOAD SESSION*****
INFO	12/3/2012 4:36:38 PM	node01_mitest	WRITER_1_*_1	WRT_8006	Writer run completed.
INFO	12/3/2012 4:36:38 PM	node01_mitest	MANAGER	PETL_24031	***** RUN INFO FOR TGT LOAD ORDER GROUP

Severity: INFO
Timestamp: 12/3/2012 4:36:38 PM
Node: node01_mitesha
Thread: DIRECTOR
Process ID: 5516
Message Code: TM_6964
Message: Date format for the Session is [MM/DD/YYYY HH24:MI:SS.US]

Step-3 Now view data in Target RDBMS (Oracle 11g)

admin SP_AGG TRG_SP

Columns Data Constraints Grants Statistics Column Statistics Triggers Depend

Sort... Filter: Enter Where Clause

	MAX_CHARGE_OFF_BAL	MIN_COMPOUND_BASIS_CD	SUM_ACC_AVG_BAL
1	1253	0	5321
2	12569	0	5581
3	12569	0	5581
4	695	0	7889
5	9603	1	6769
6	1253	0	5321
7	695	0	7889
8	2348	0	1900
9	695	0	7889
10	9603	1	6769
11	695	0	7889
12	12569	0	5581
13	9603	1	6769
14	1253	0	5321