



Informatica Power Center 9.0.1

Building Financial Data Mode - Lab#1

Hands-on Guide on Filter Transformation

Description:

BISP is committed to provide BEST learning material to the beginners and advance learners. In the same series, we have prepared a complete end-to-end Hands-on Guide for building financial data model in Informatica. The document focuses on how the real world requirement should be interpreted. The mapping document template with very simplified steps and screen shots makes the complete learning so easy. [Join our professional training program and learn from experts.](#)

History:

Version	Description Change	Author	Publish Date
0.1	Initial Draft	Upendra Upadhyay	10/01/2011
0.1	Review#1	Amit Sharma	11/01/2011

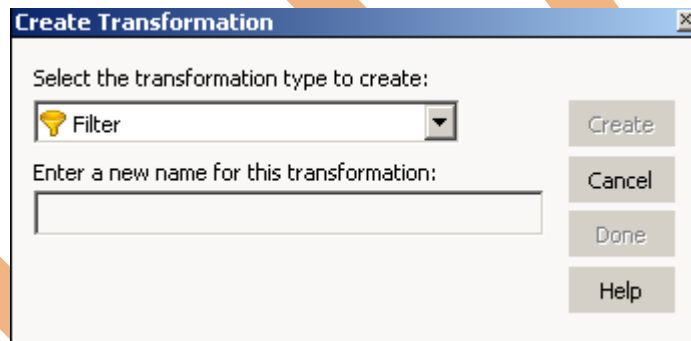
TABLE OF CONTENTS

S.NO	TITLE	PAGE. NO.
1	<u>Introduction.</u>	3
2	<u>Creating Repository & Folder.</u>	4-7
3	<u>Import Datasource.</u>	8-15
4	<u>Create Mapping and Defining Filters.</u>	16-18
5	<u>Create Workflow.</u>	19-24
6	<u>Workflow Monitor & Review data.</u>	25-27

Introduction

Filter Transformation in Informatica.

We can filter rows in a mapping with the Filter transformation. We pass all the rows from a source transformation through the Filter transformation, and then enter a Filter condition for the transformation. All ports in a Filter transformation are input/output and only rows that meet the condition pass through the Filter Transformation



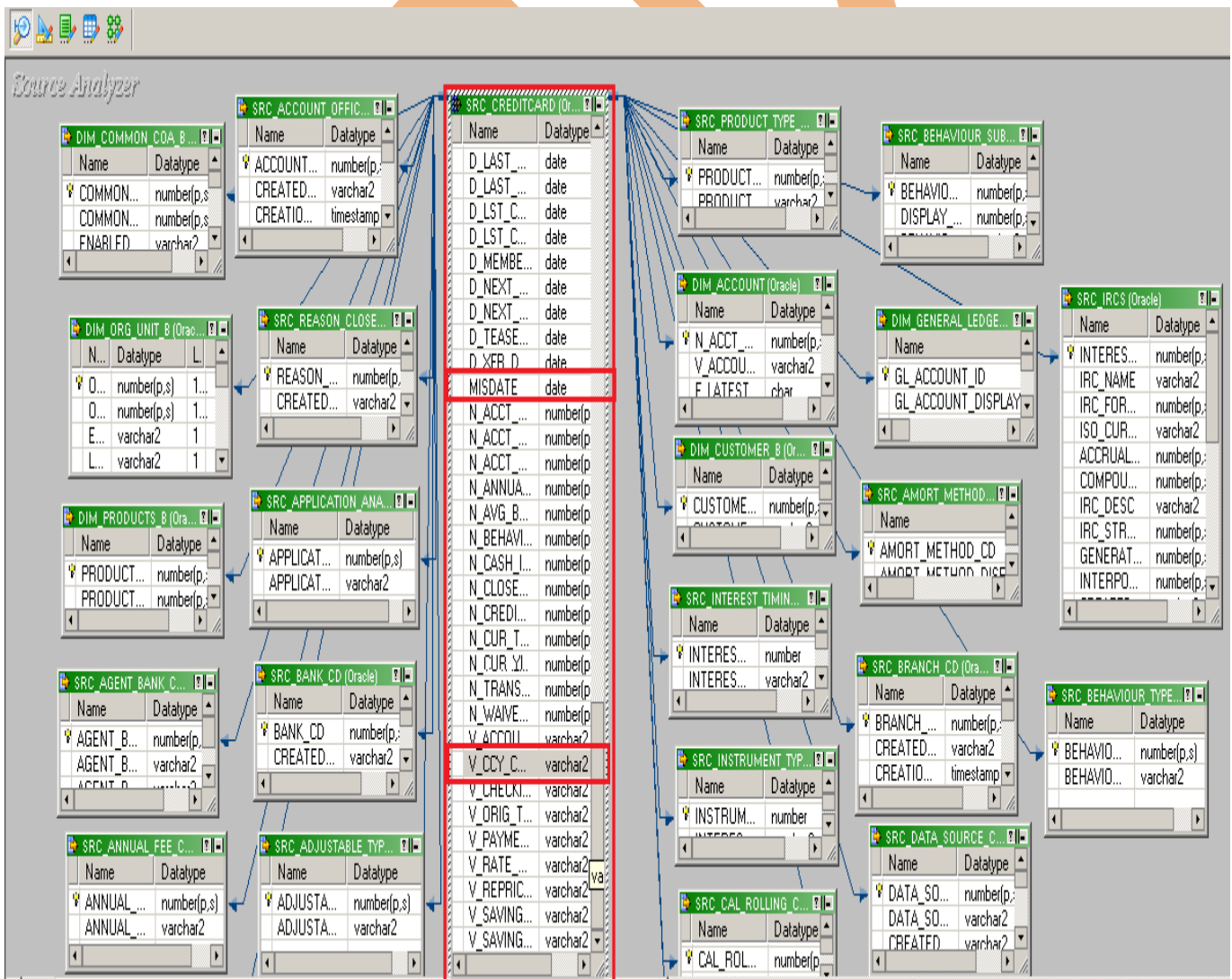
Description

A Source Qualifier Transformation.

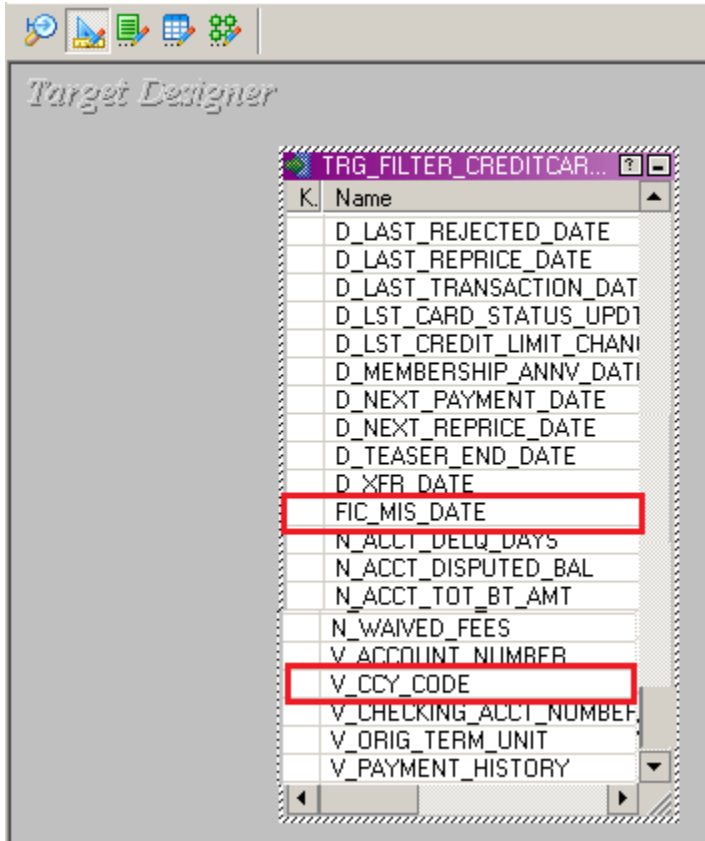
- Used Oracle 11g as a source database
- Used Oracle 11g as a target database.

Filter Condition.

Definition Name	Filter Transformation			
Source Name	SRC_CREDITCARD			
Target Name	TRG_Filter_CreditCard			
FILTER	SRC_CREDITCARD.MIS_DATE=30-oct-2012 AND SRC_CREDITCARD.V_CCY_CODE='US'			



Source Table

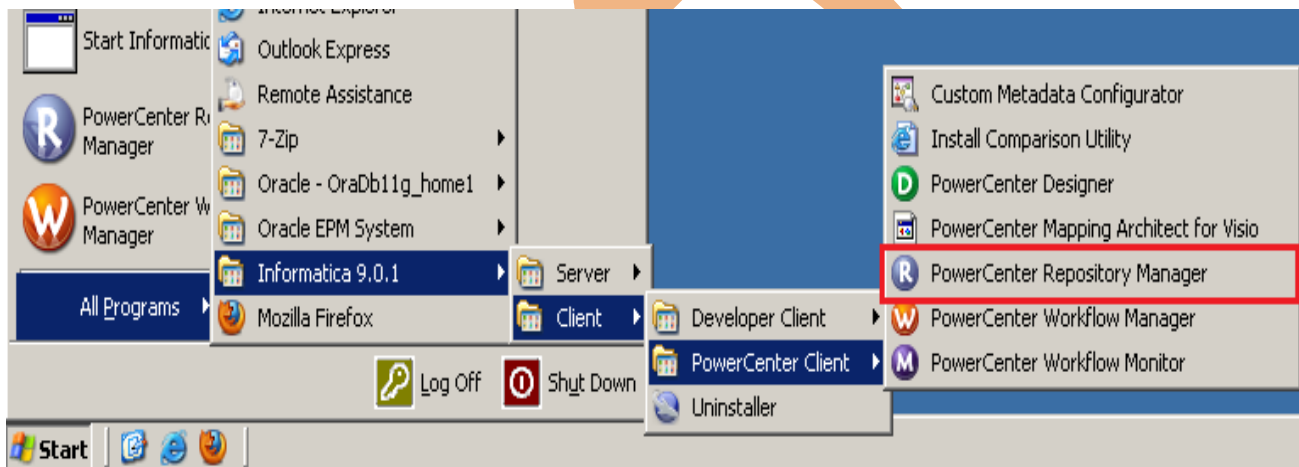


Target Table

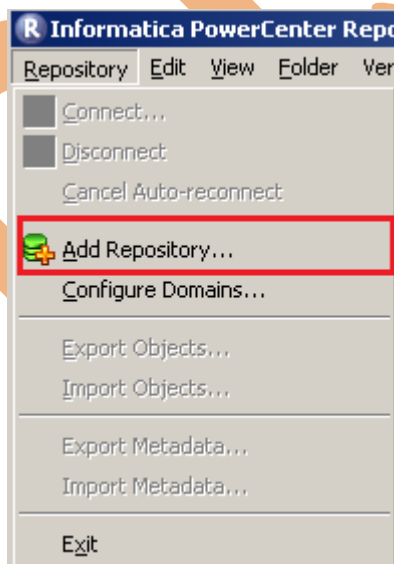
Creating Repository and Folder

Creating Repository & Connecting it.

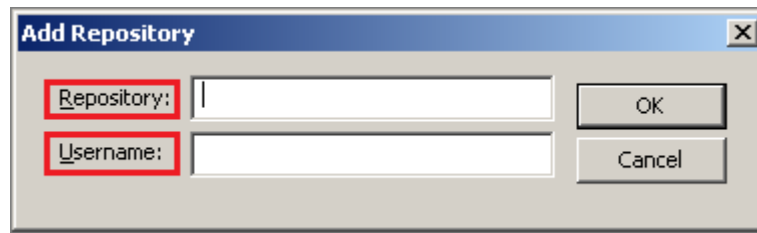
Step-1 First create repository, Click on Start -> All Programs -> Informatica 9.0.1 -> Client -> Power Center Client -> Power Center Repository Manager.



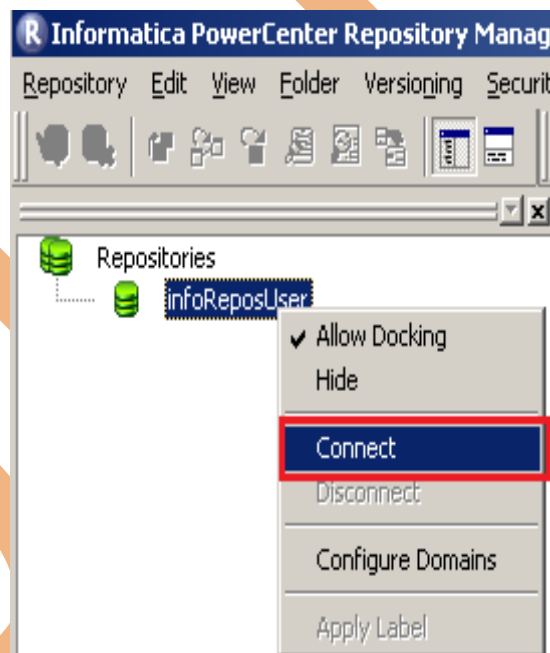
Step-2 Then click on Repository Menu and click on Add Repository.



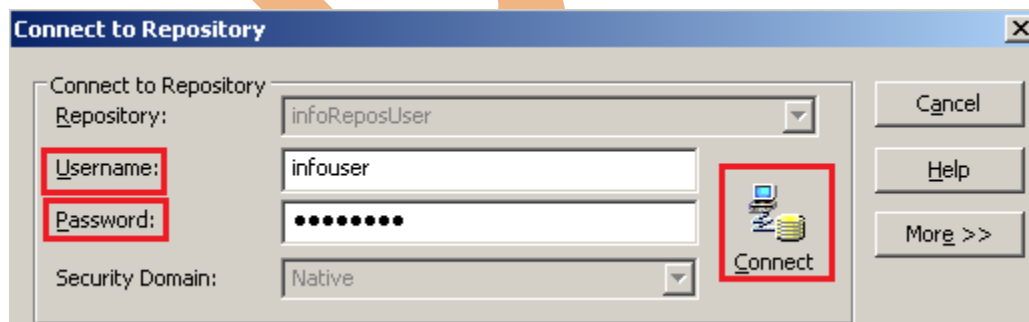
Step-3 Give information like Repository Name and Username. Then click on ok button and repository created successfully.



Step-4 Now connect repository. Right click on newly created repository and click on connect.

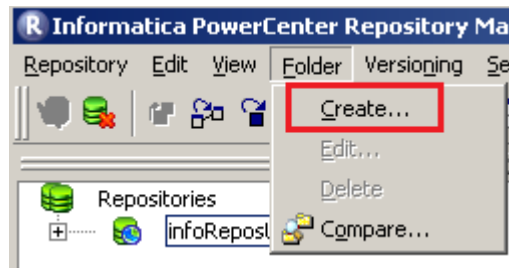


Step-5 Give Username & password and click on Connect.

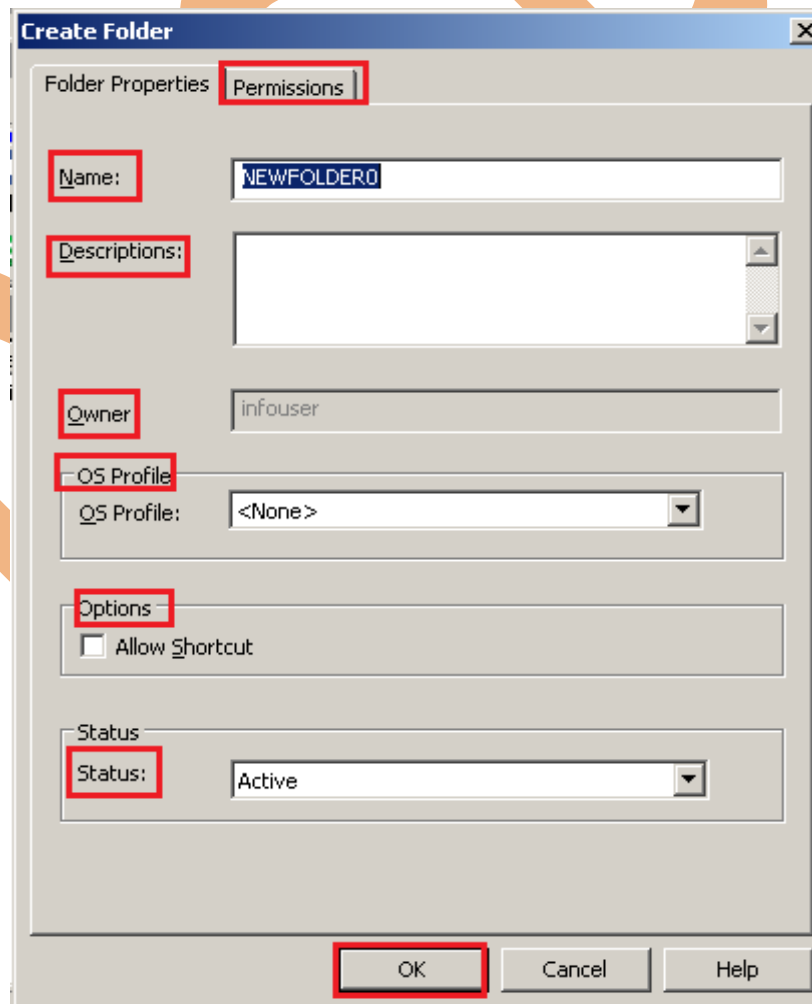


Creating Folder.

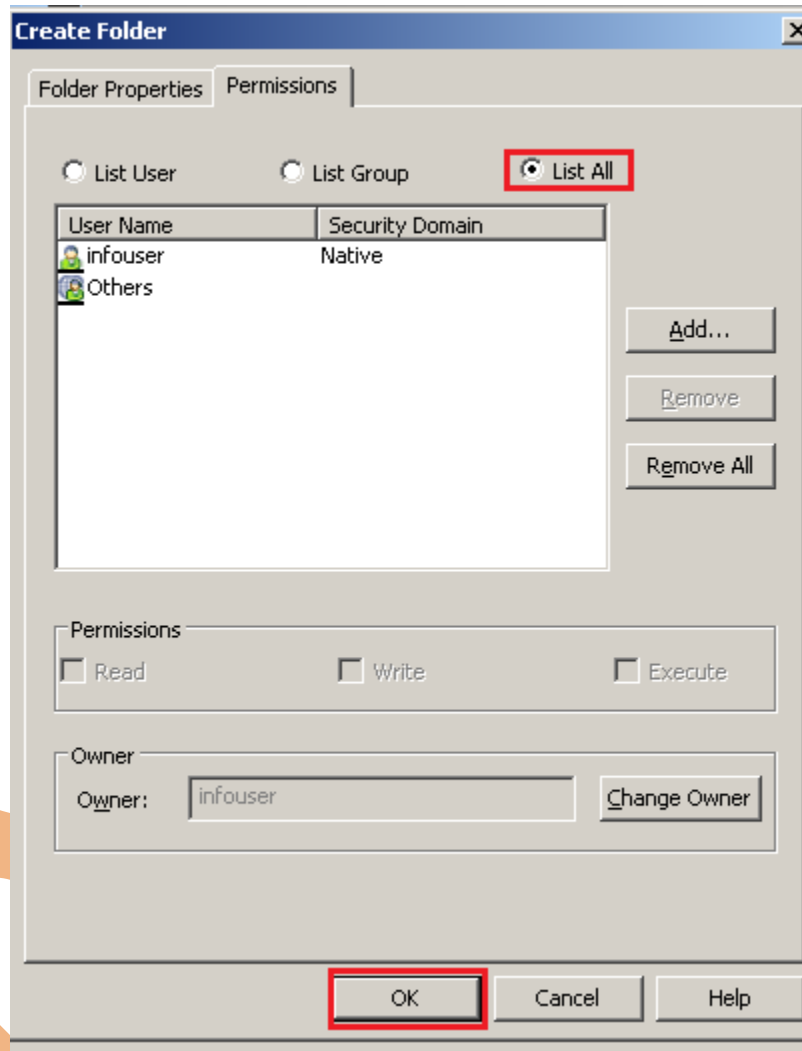
Step-1 Go to Informatica Power Center Repository Manager and click on Folder Menu and click on Create.



Step-2 Specify Name of Folder, Description, Owner, OS Profile, Options, Status and got to permissions tab.



Step-3 This is permission tab to give permission for this folder.

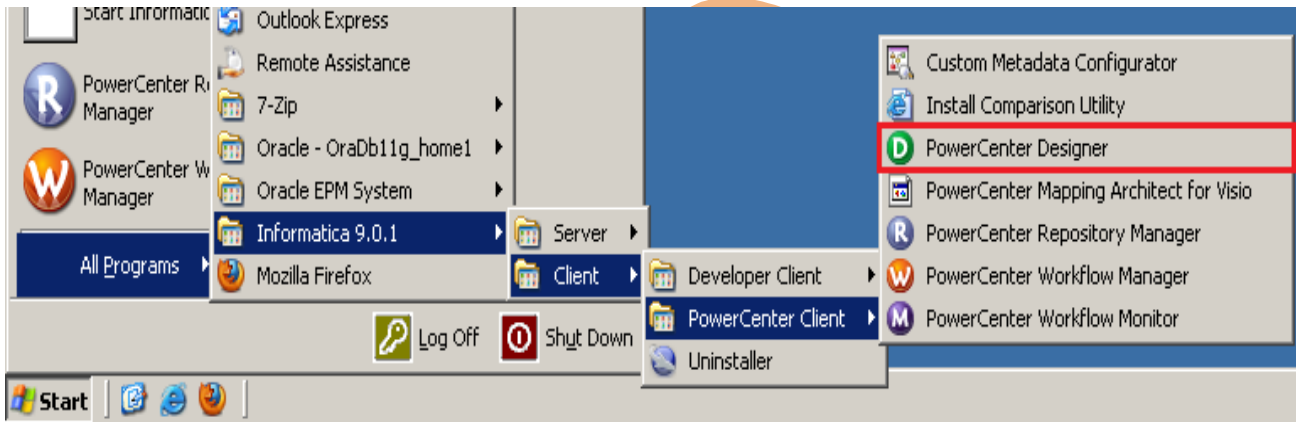


Step-4 This is newly created Folder

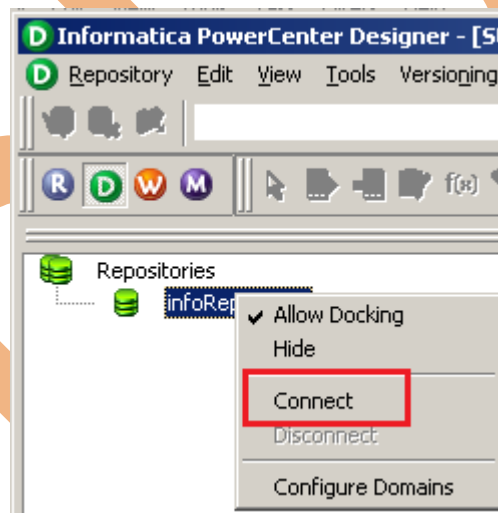
Name	Comments	Is Shared	Owner	OS Profile
bispInfo	-	no	infouser	-
Transformation	-	no	infouser	-

Importing Source and Target Table

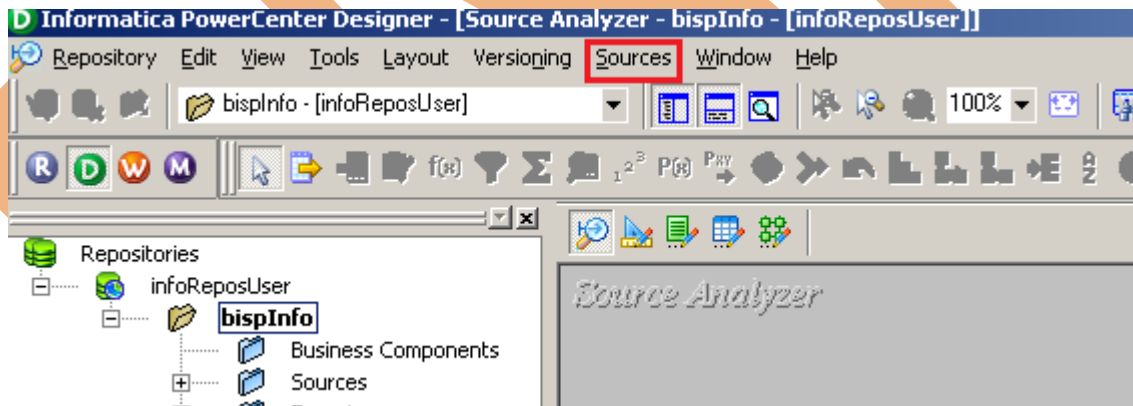
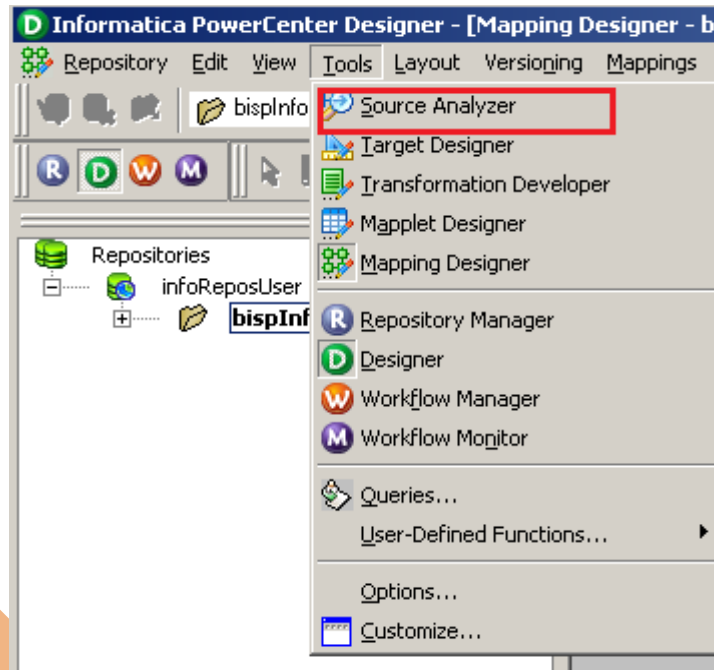
Step-1 Click on Start -> All Programs -> Informatica 9.0.1 -> Client -> Power Center Client -> Power Center Designer..



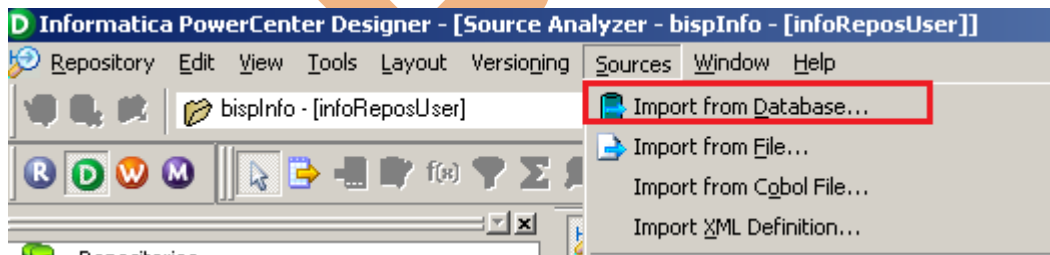
Step-2 Then Connect to Repository in Informatica Power Center Designer Right click on repository name and click on Connect.



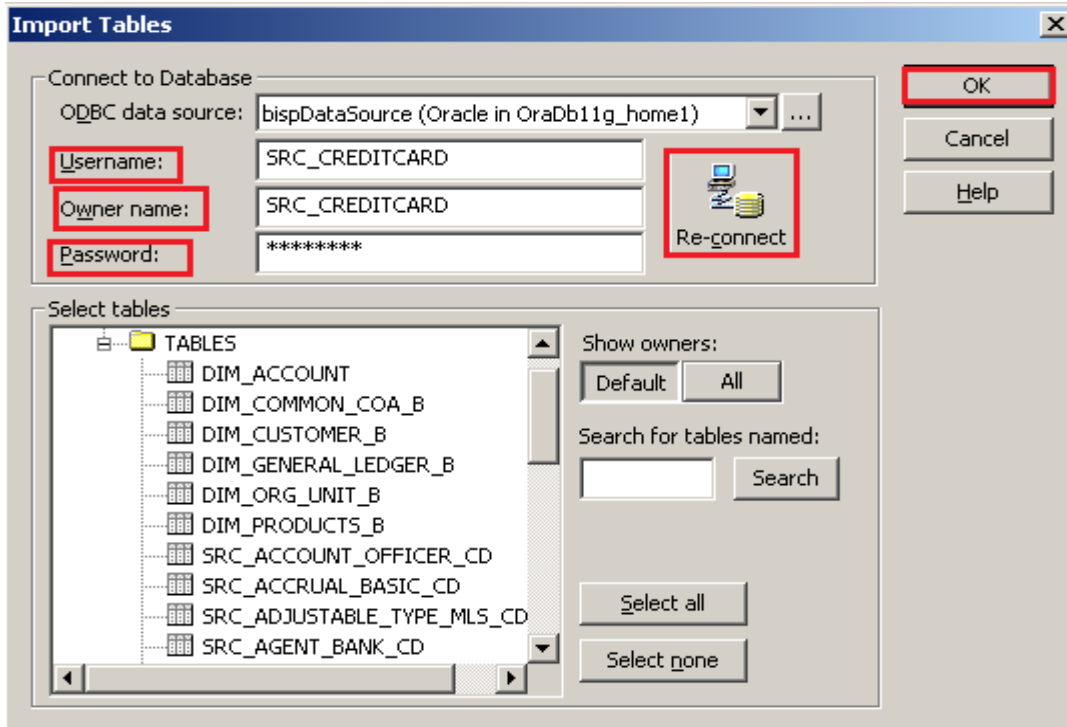
Step-3 Go to Tools Menu and click on Source Analyzer to import source table. And then go to Sources Menu in Informatica Power Center Designer.

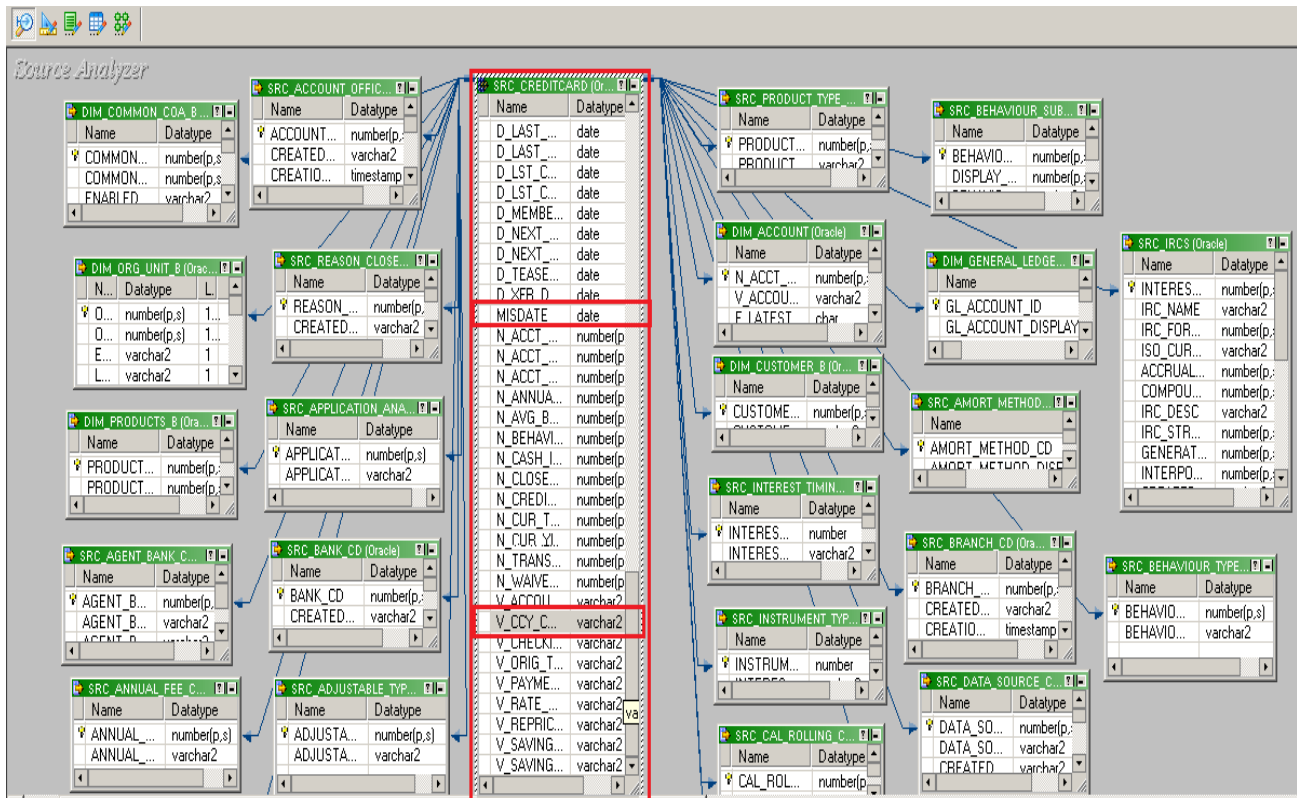


Step-4 And then select Source menu and click on Import from database

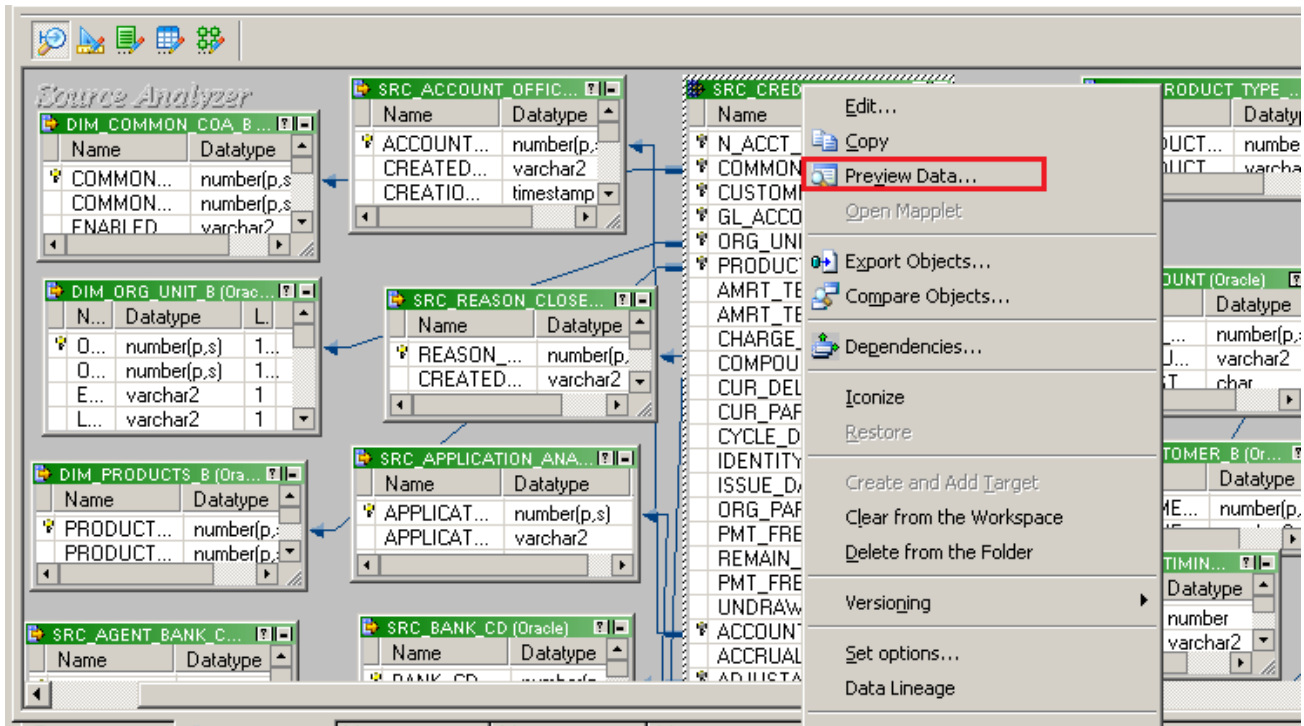


Step-5 Specify Username, Owner name, password and then connect. Then select source table and click OK.

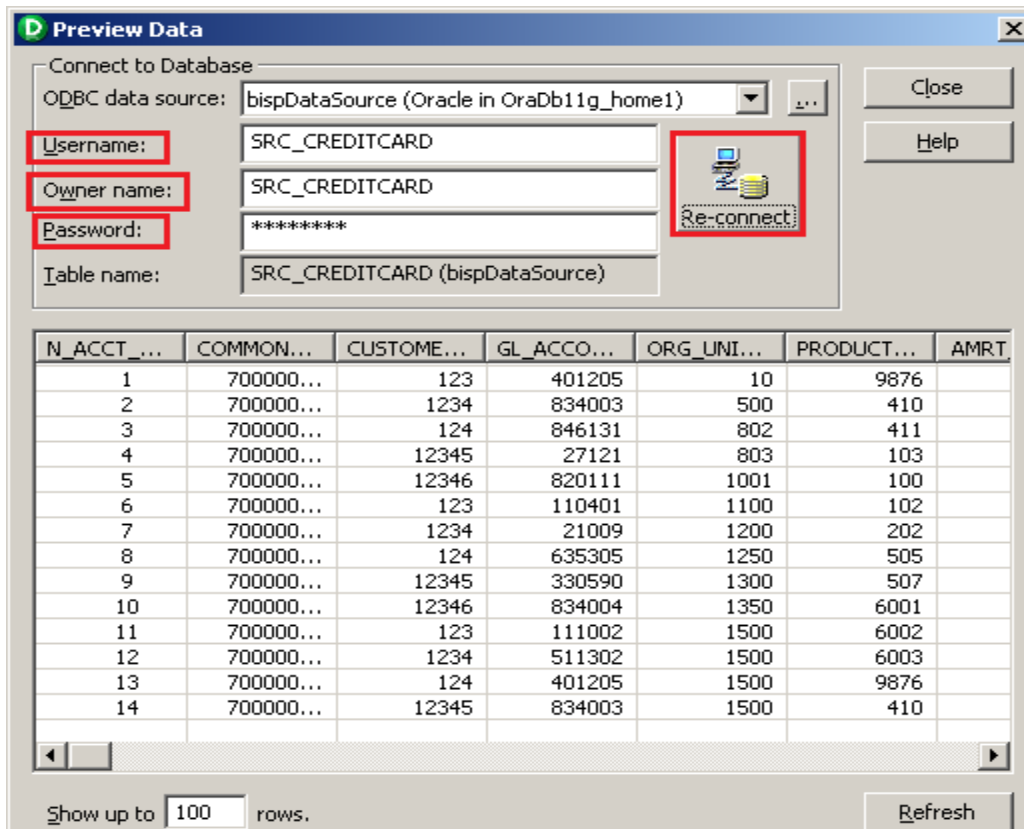




Step-6 View data in source analyzer, Right click on SRC_CREDITCARD and select Preview Data.

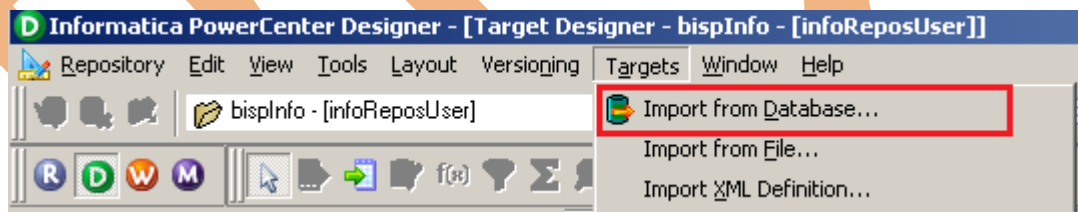


Step-7 Specify Username and Password and connect it. Then Close it.

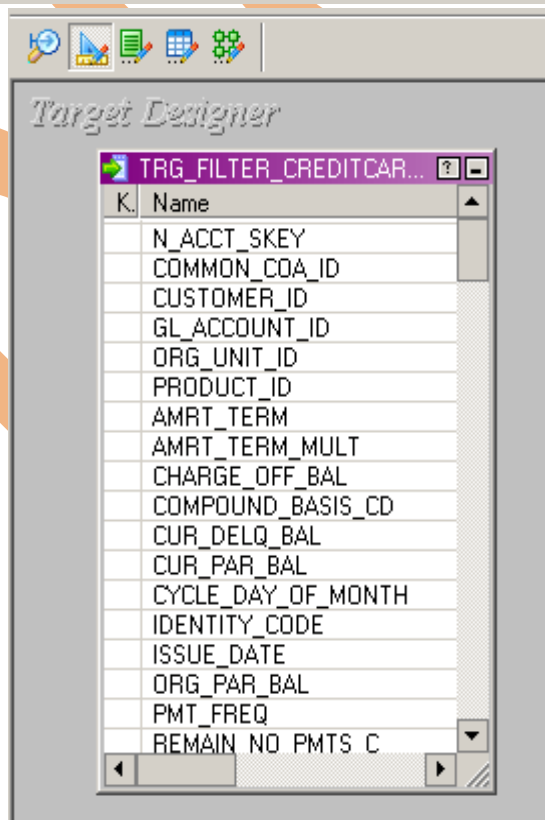
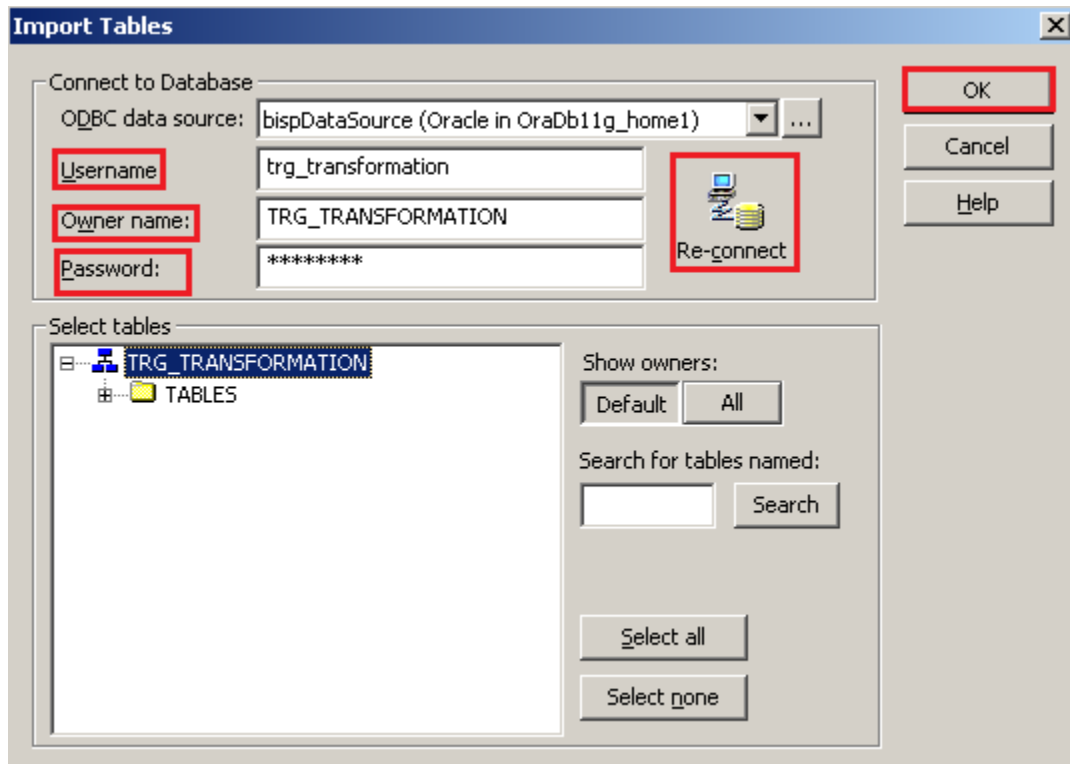


Step-8 Now click on Target Designer.

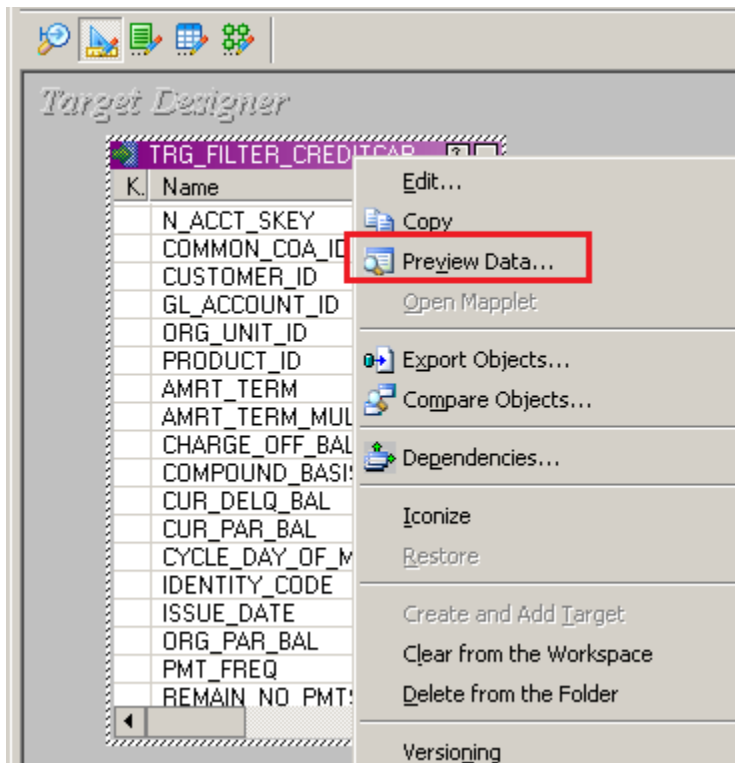
Step-9 And then select Target menu and click on Import from database to import target table.




Step-10 Specify Username, Owner name, password and then click on connect and then select table and then OK.

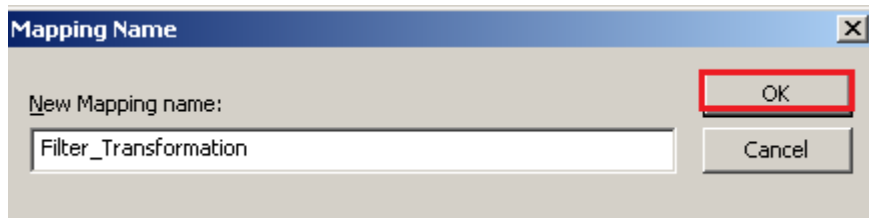


Step-11 To view data select table and Right click on that table after that specify Username and Password and connect it. Then Close it.

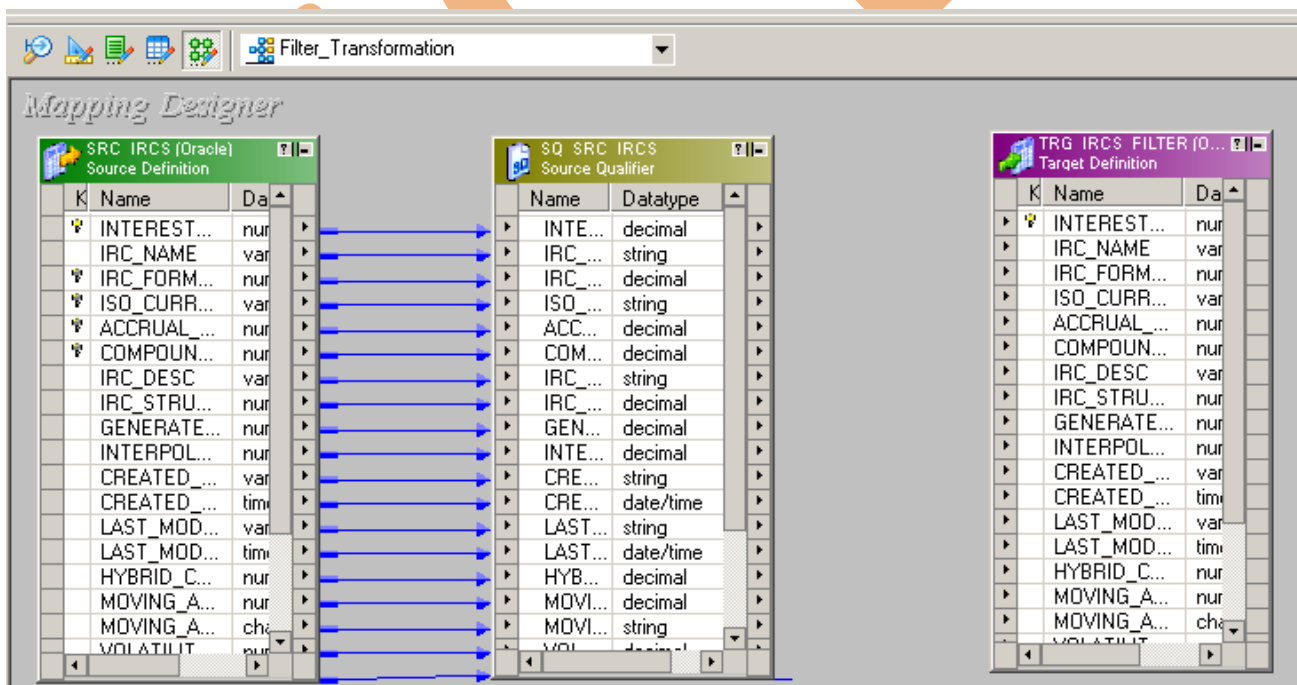


CREATE MAPPING

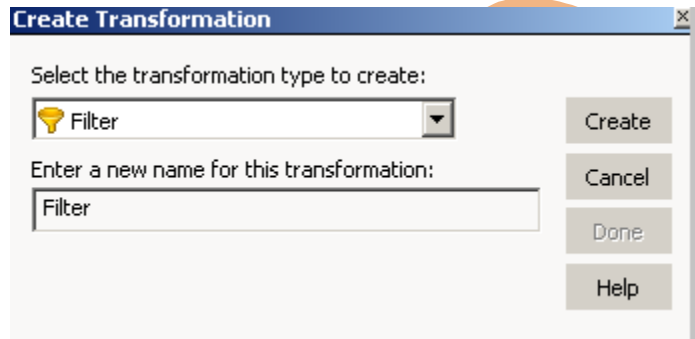
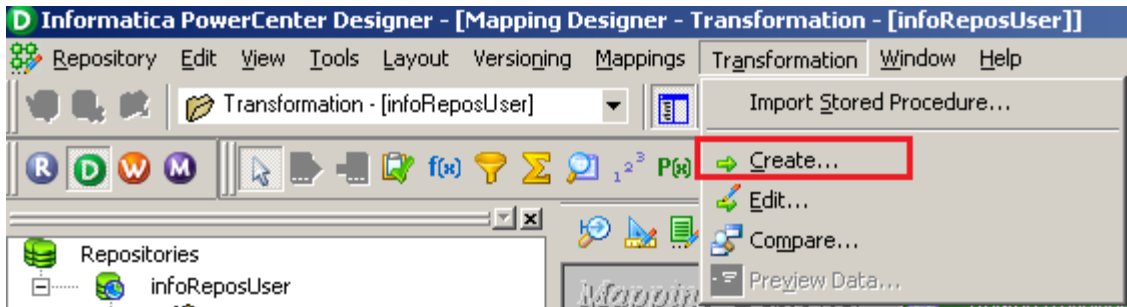
Step-1 Go to Mapping Designer  and Create New Mapping and then name of mapping and click OK.



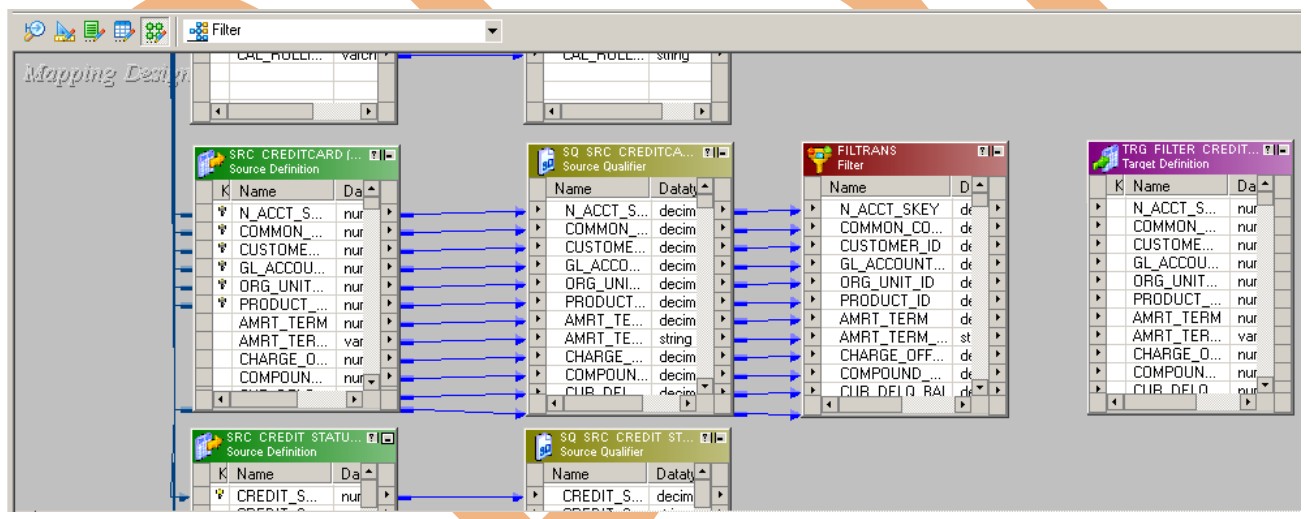
Step-2 Then drag and drop source and target data in Mapping Designer.

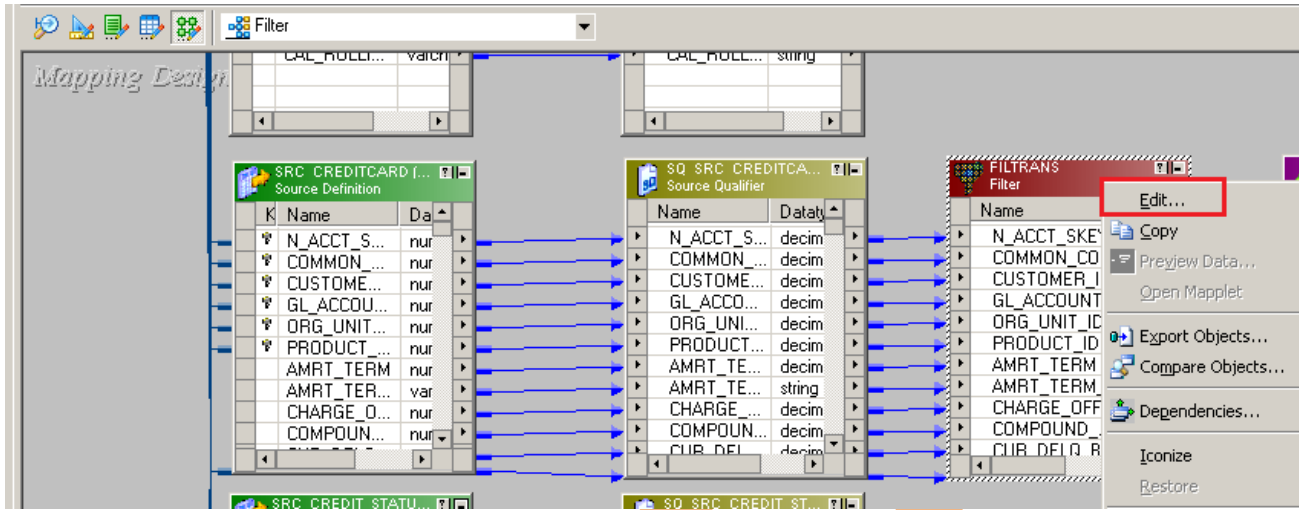


Step-3 Then create transformation, Click on Transformation menu and click on Create. Then select transformation and Name of transformation and click Create and then Done.

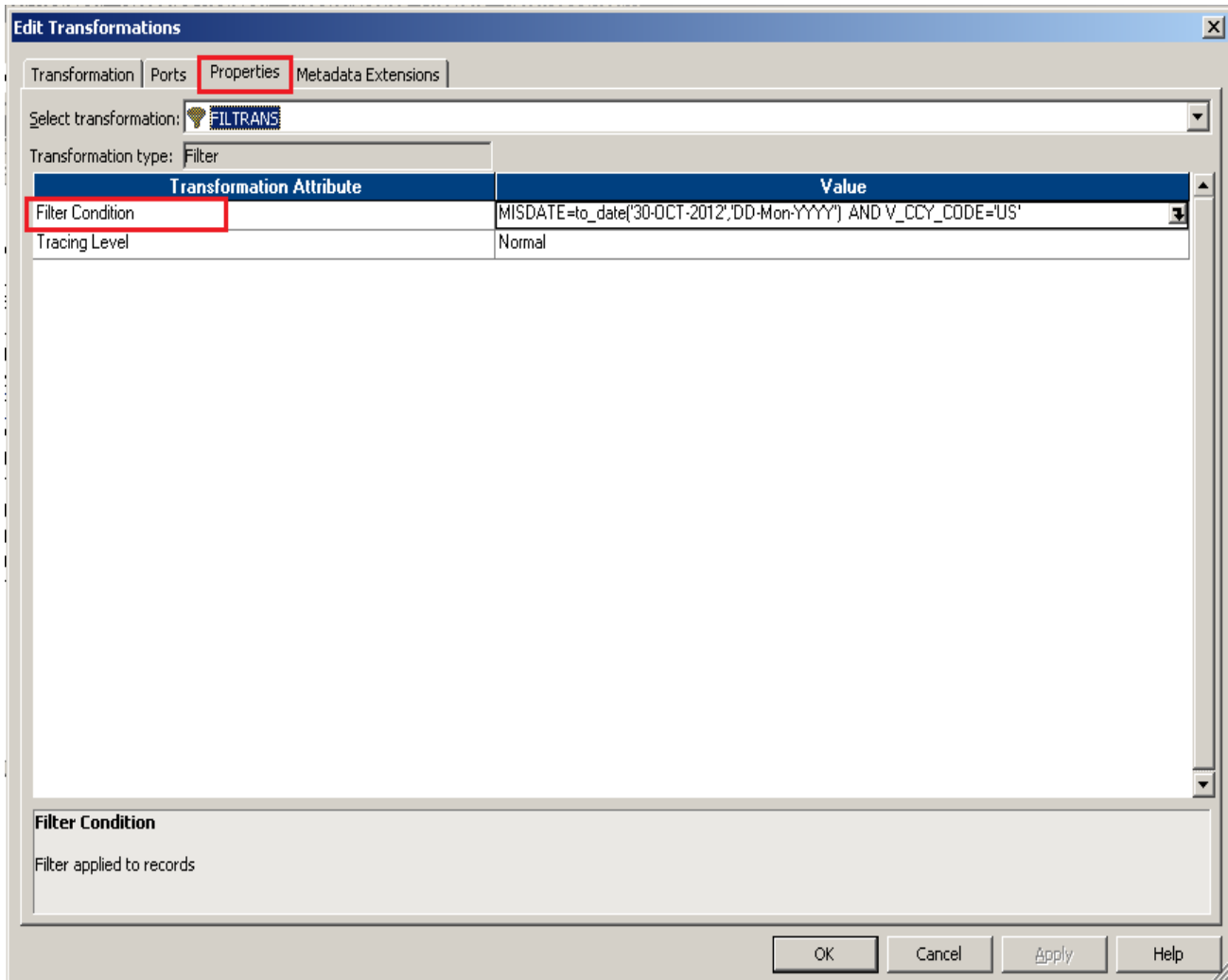


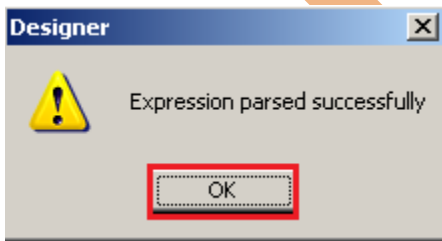
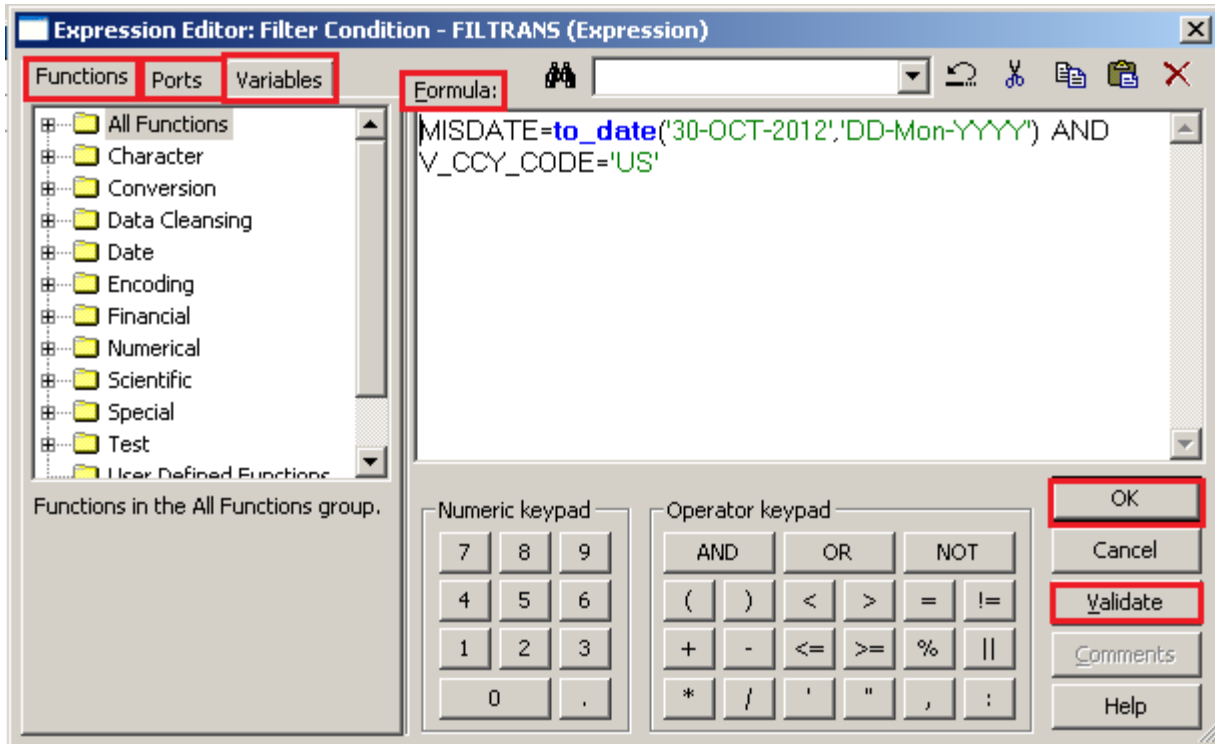
Step-4 Then drag and drop all column in Filter Transformation table and then create mapping for then right click on filter transformation and go to edit and write filter condition in properties tab. Then drag a column to filter and drop to target designer column.



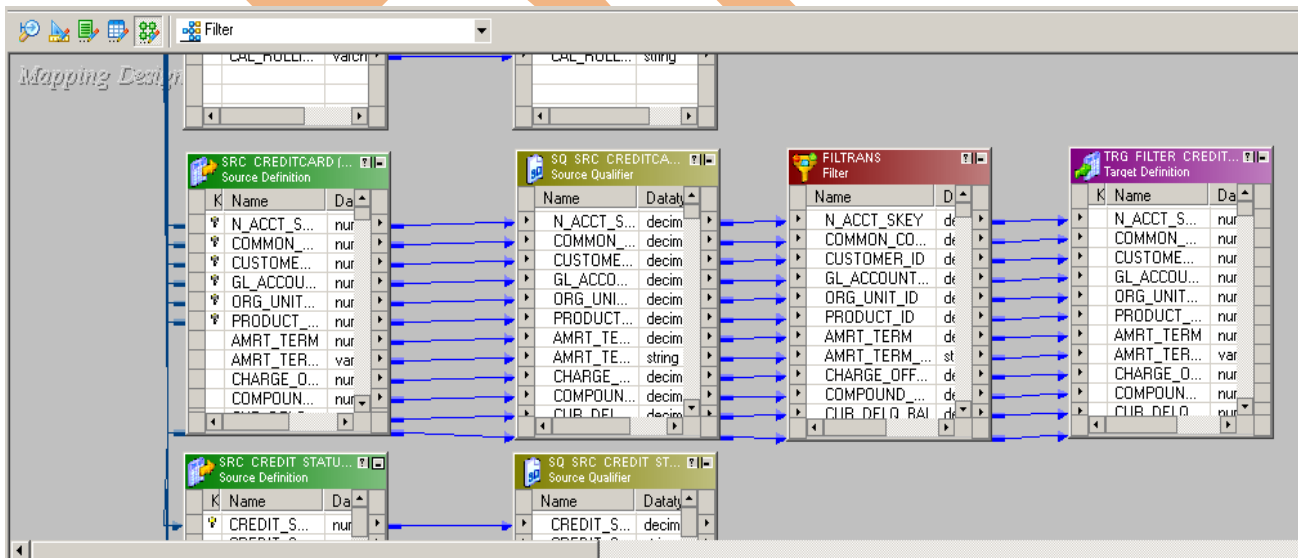


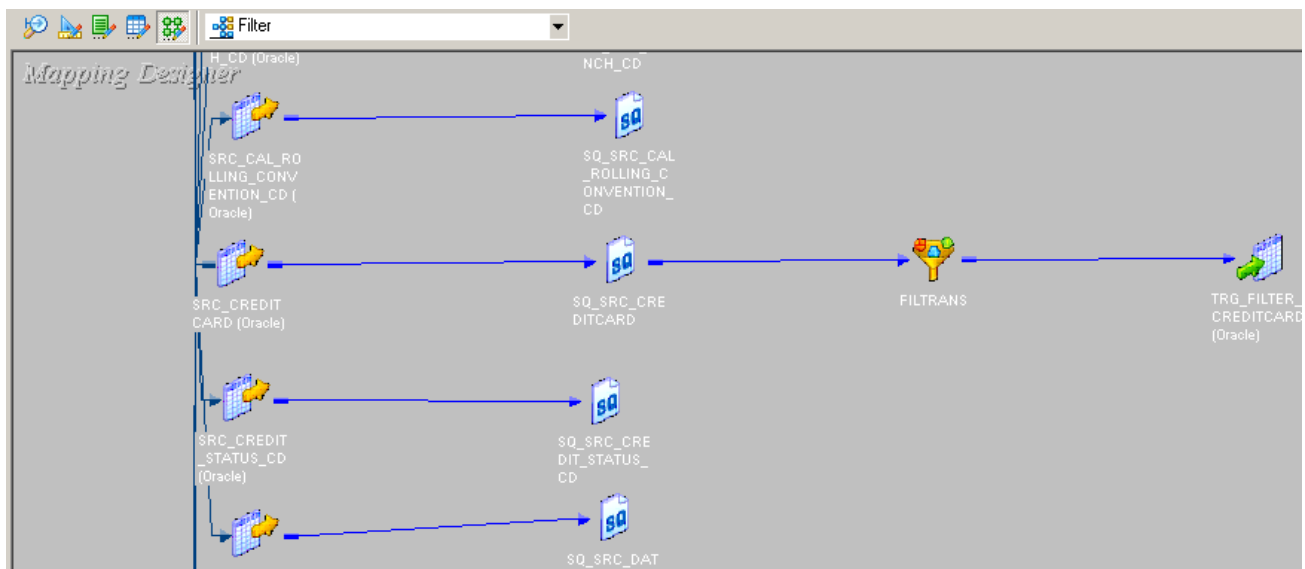
Step-5 Go to Properties tab and write Filter Condition.





Step-6 Create Mapping.





Step-6 And then save it (ctrl+s) and check mapping is VALID.

```
10/16/2012 15:44:00 ** Saving... Repository infoReposUser, Folder Transformation
```

```
.....
Validating transformations of mapping Filter_Transformation....
```

```
...transformation validation completed with no errors.
```

```
Validating data flow of mapping Filter_Transformation....
```

```
...data flow validation completed with no errors.
```

```
Parsing mapping Filter_Transformation....
```

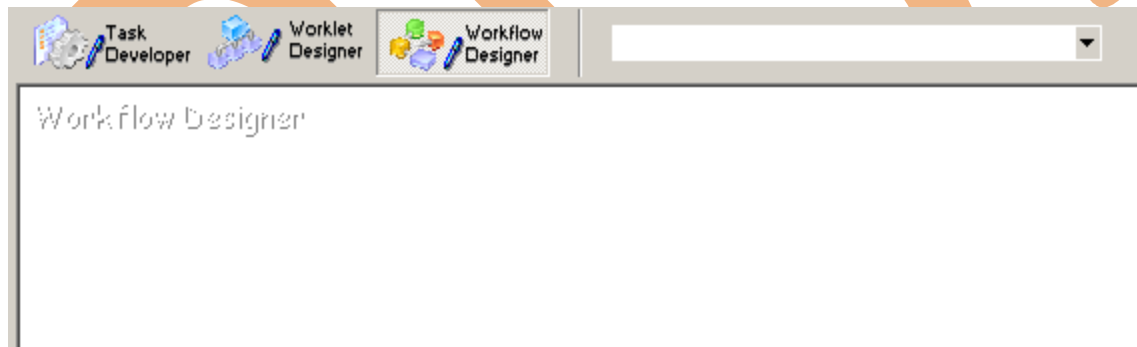
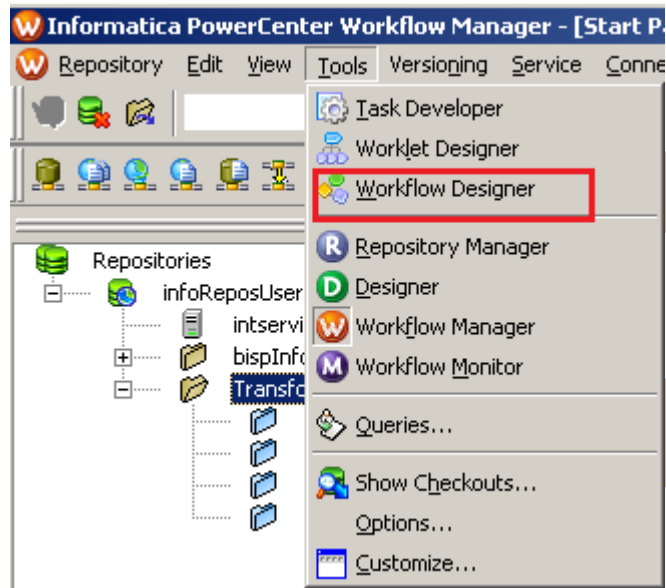
```
...parsing completed with no errors.
```

```
***** Mapping Filter_Transformation. is VALID *****
```

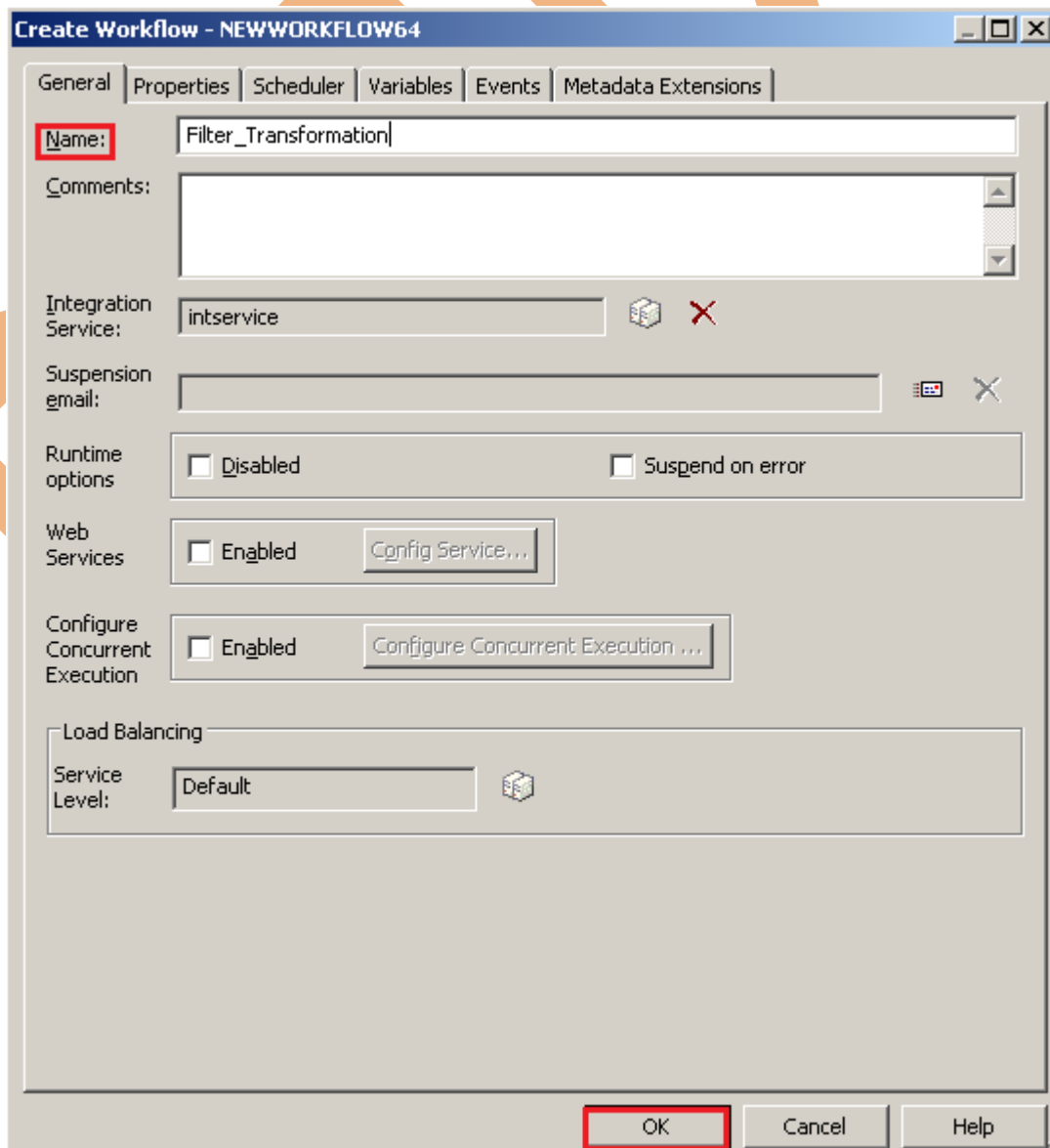
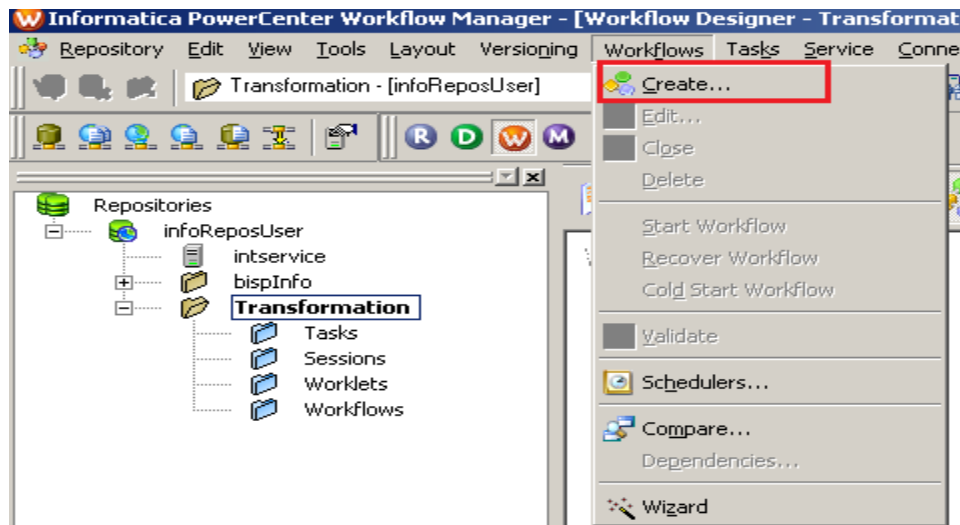
```
mapping Filter_Transformation. inserted.
```


CREATE WORKFLOW

Step-1 Now go to Informatica Power Center Workflow Manager, and go to Tools menu and select Workflow Designer.



Step-2 Now to create workflows, Go to Workflows menu and select Create. After that Name of workflow and click OK buttons.



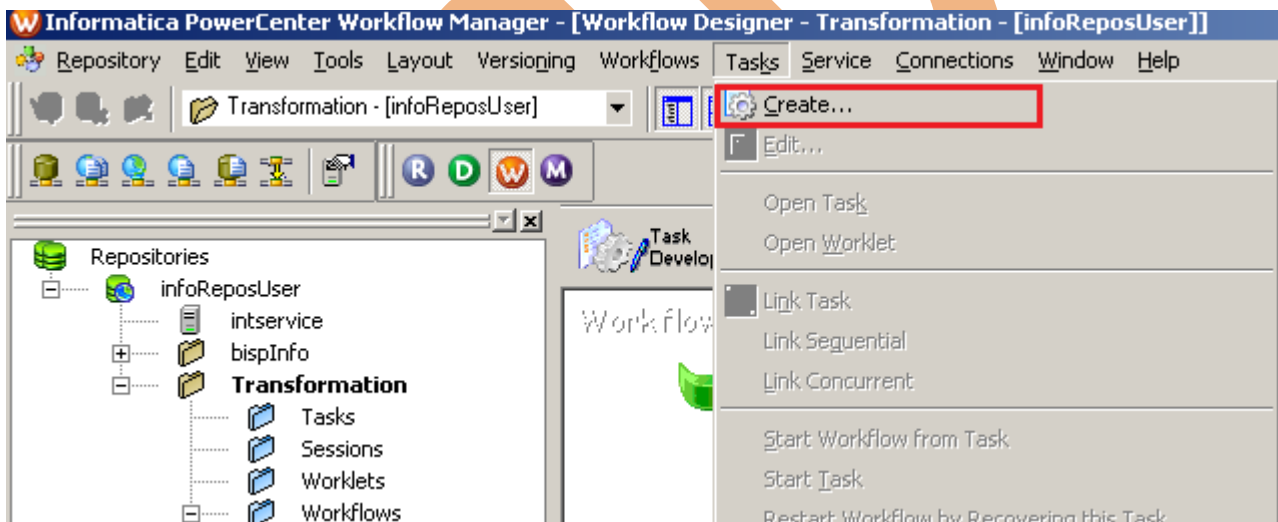


Workflow Designer

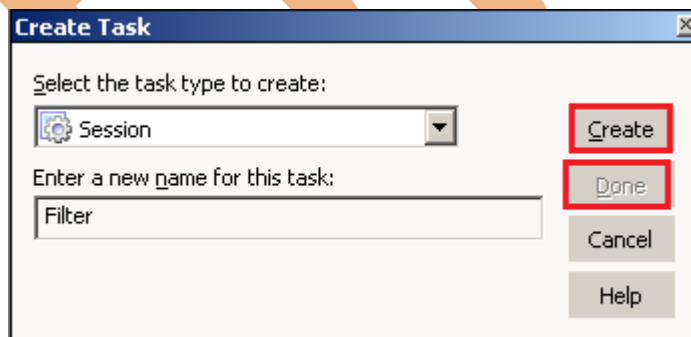


Start

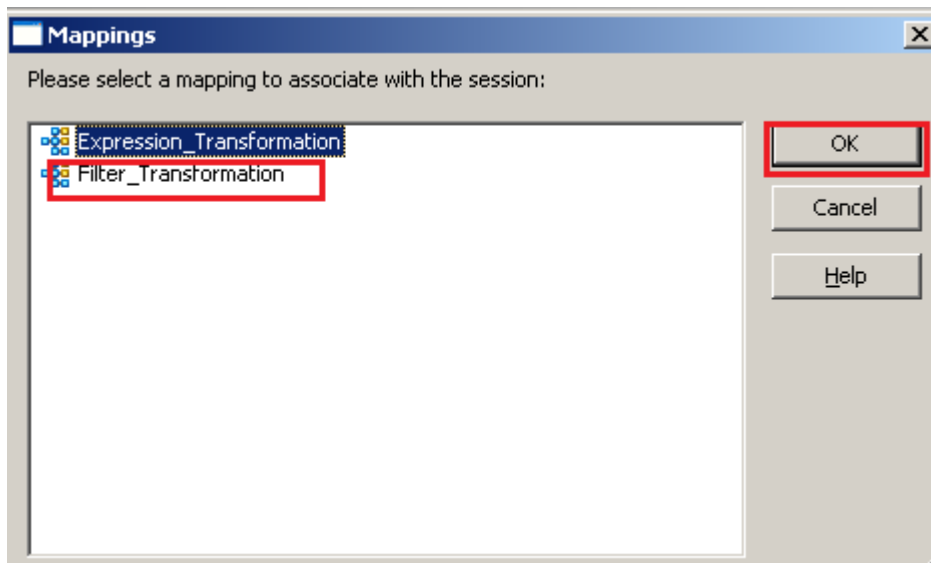
Step-3 Now create Task, Go to Tasks Menu and click Create.



Step-4 Now select session and insert Name of task.



Step-5 Select Mapping to associate with the session.



Step-6 Workflow Designer Window.



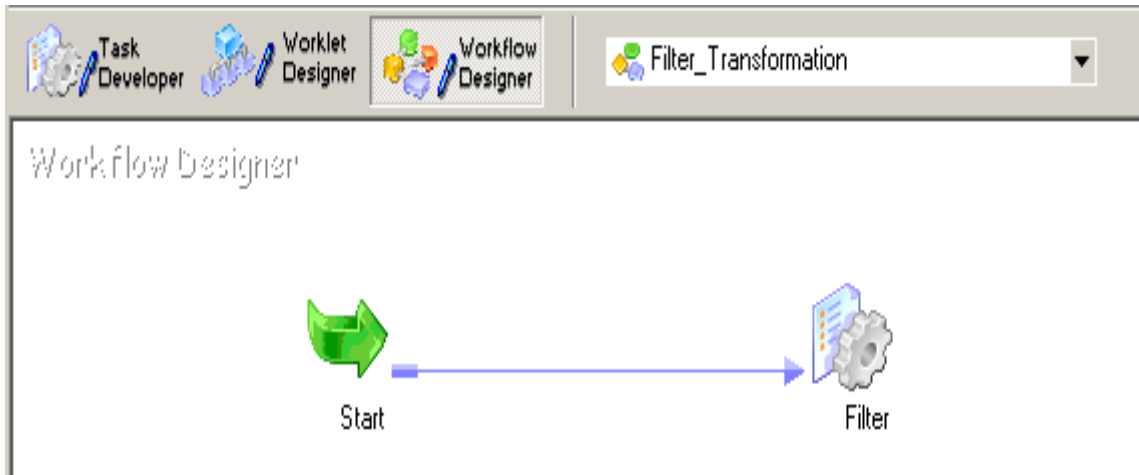
Workflow Designer



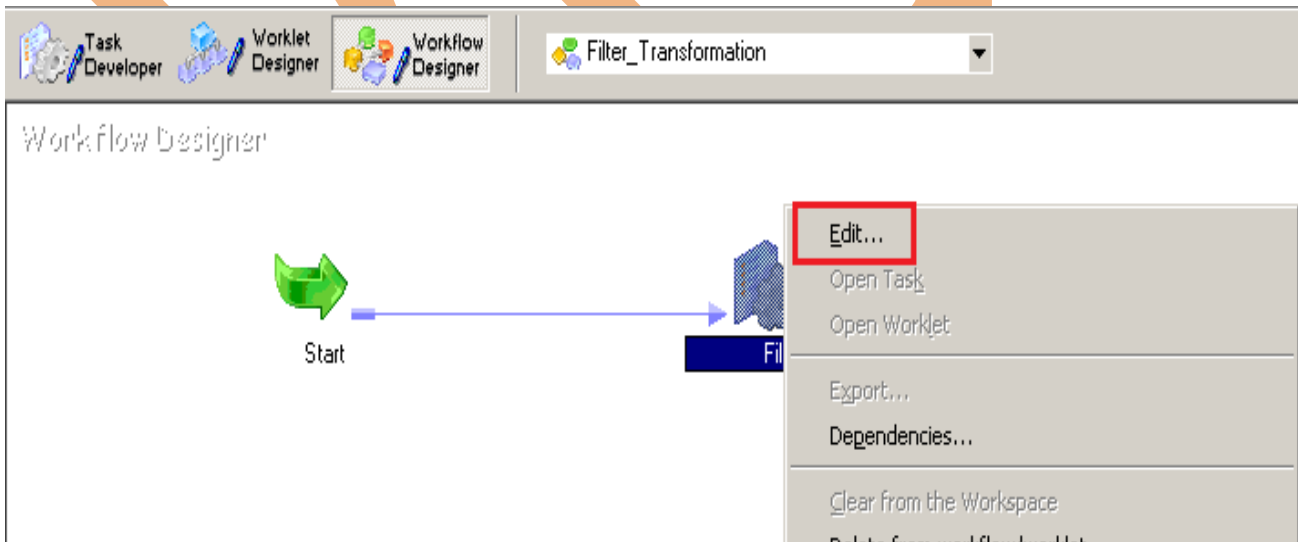
Step-7 Now create flow B/W Workflow to Task. Select Line Task and link to Start to Filter.



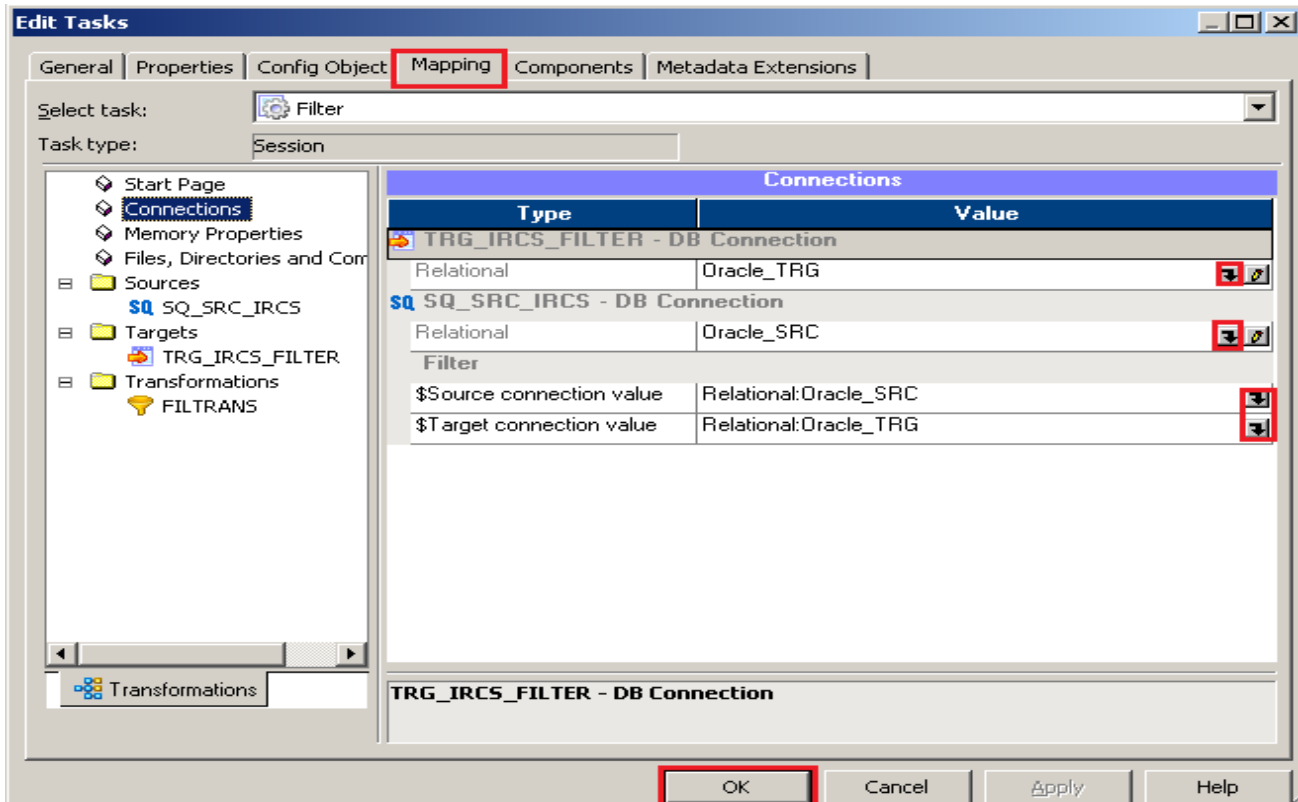
Step-8 Work Designer Windows

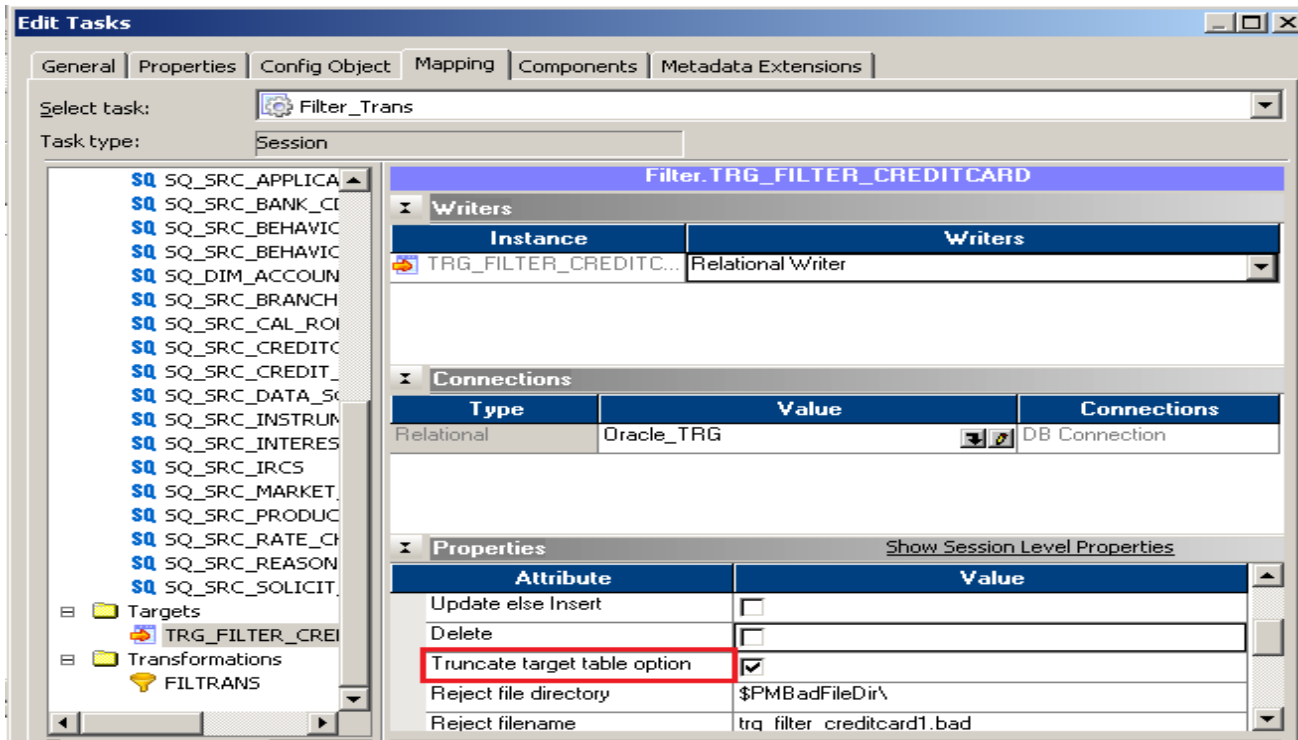


Step-9 Now Configure Connection to Source and Target, Then Right Click on Filter and Edit, Then Click Mapping tab and configure connection for your source and target table schema in oracle 11g RDBMS. And then click OK.

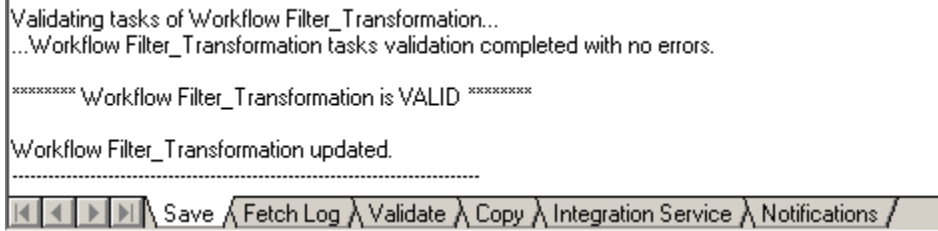


Step-10 Select DBConnection for Source and Target Relation Database.



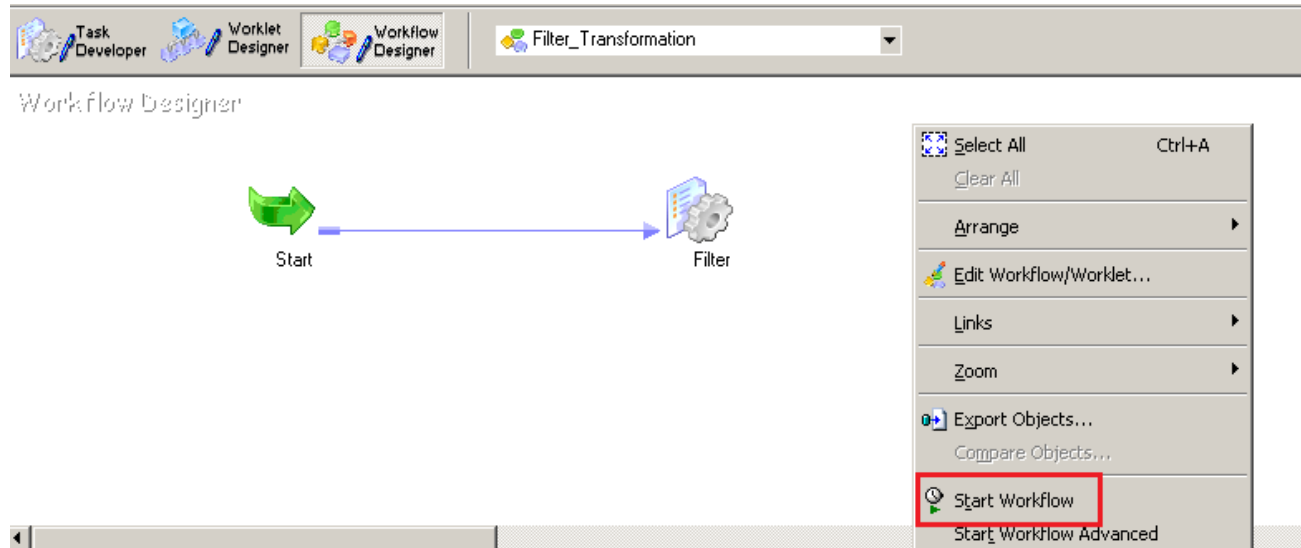


Step-11 Now save (ctrl+s) this workflow and check it.



WORKFLOW MONITOR AND VIEW TARGET DATA

Step-1 Now Start Workflow, Right click on Workflow Designer Window and Click on Start Workflow.



Step-2 Check session in Informatica PowerCenter Workflow Monitor.

Task Name	Start Time	End Time	Status
Filter_Transformation	10/16/2012 9:07:38 AM	10/16/2012 9:09:04 AM	Succeeded
Filter	10/16/2012 9:07:38 AM	10/16/2012 9:07:55 AM	Succeeded

Step-3 Now view data in Target RDBMS (Oracle 11g)

IBERSHIP_ANIVV_DATE	D_NEXT_PAYMENT_DATE	D_NEXT_REPRICE_DATE	D_TEASER_END_DATE	D_XFR_DATE	FIC_MIS_DATE	V_CCY_CODE	N_ACCT_DELQ_DAYS	N_ACCT_DISPUTED_BAL	N_A
1	(null)	(null)	(null)	(null)	30-OCT-12	US	(null)	(null)	
2	(null)	(null)	(null)	(null)	30-OCT-12	US	(null)	(null)	
3	(null)	(null)	(null)	(null)	30-OCT-12	US	(null)	(null)	
4	(null)	(null)	(null)	(null)	30-OCT-12	US	(null)	(null)	

