



## Document:

# An Overview of Oracle Hyperion Planning

## Description:

This is another document from Hyperion Planning Beginner's Guide Series. The document provides the overview of Oracle Hyperion Planning and the related products.

## History:

Version	Description Change	Author	Publish Date
0.1	Initial Draft	Gaurav Shrivastava	05-Aug-2010
0.1	Reviewed By	Amit Sharma	05-Aug-2010

# Table of Contents

1. <a href="#">Planning, Budgeting and Forecasting fundamentals.....</a>	<a href="#">03</a>
a. <a href="#">Planning Overview.....</a>	<a href="#">03</a>
b. <a href="#">Budgeting.....</a>	<a href="#">03</a>
c. <a href="#">Forecast.....</a>	<a href="#">03</a>
2. <a href="#">Hyperion Planning.....</a>	<a href="#">04</a>
3. <a href="#">Challenges that Planners Face include.....</a>	<a href="#">04</a>
4. <a href="#">Planning Features.....</a>	<a href="#">06</a>
5. <a href="#">Planning Components.....</a>	<a href="#">07</a>
6. <a href="#">Related Planning Components.....</a>	<a href="#">07</a>
7. <a href="#">Planning Architecture.....</a>	<a href="#">08</a>
8. <a href="#">Hyperion Workspace Overview.....</a>	<a href="#">09</a>
9. <a href="#">Opening Planning Application.....</a>	<a href="#">14</a>
10. <a href="#">Planning and Essbase Integration.....</a>	<a href="#">14</a>
11. <a href="#">Planning Process Cycle.....</a>	<a href="#">15</a>

## Planning, Budgeting and Forecasting fundamentals

**Planning Overview :** You can understand planning like, it is just forecast of your business. Company do planning for his business when company starts new business or new business year. Company should specify what are their needs? What are the revenue channel? How many employees you need? For replying many questions you need to plan your business.

**Budgeting :** A budget is money approved for list of all planned expenses and revenues. Or "The process of translating approved expenditures into funding allocations for a specified period of time".

**Forecast :** Forecasting is the process of estimate about events whose actual outcomes have not yet been observed. Forecasting is an estimated values of a future business.

**Example -** Budget, forecast and actual are shown in below example. This example is to show budget, forecast and actual for a meeting. You can see that meeting held in between 20-Aug-2011 to 25-Aug-2011. You have budget, forecast and actual data in this excel sheet.

INDIVIDUAL MEETING EXPENSE WORKSHEET				
Name	Sample Meeting 1			
Location	The Convention Hotel, Anytown, USA			
Start Date	8/20/2011			
End Date	8/25/2011			
Internal Contact	Jane Smith			
Contact Telephone	333-555-1234			
	August			
Attendance	Budget	Forecast	Actual	
Attendees	100	109	99	
Room Nights	350	370	348	
Accommodation Expenses	Budget	Forecast	Actual	
Guest Room Charges	\$ 56,000	\$ 59,200	\$ 55,680	
Suite Charges	\$ 2,000	\$ 1,500	\$ 1,500	
Misc. Accommodation	\$ 500	\$ 500	\$ 500	
Cancellation	\$ -	\$ -	\$ -	
Attrition	\$ -	\$ -	\$ -	
Subtotal:	\$ 58,500	\$ 61,200	\$ 57,680	
Meeting Expenses	Budget	Forecast	Actual	
Food & Beverage	\$ 21,000	\$ 22,890	\$ 20,790	
Room Rental	\$ 500	\$ 500	\$ 500	
AV Equipment	\$ 8,000	\$ 8,000	\$ 9,000	
Amenities & Entertainment	\$ 5,000	\$ 5,000	\$ 7,000	
Equipment & Room Setup	\$ 2,000	\$ 2,000	\$ 1,700	
Misc. Meeting	\$ 700	\$ 700	\$ 400	
Subtotal:	\$ 37,200	\$ 39,090	\$ 39,390	

You will get budget before event or time period to spend. You can say budget is pre define value. Forecast are predicted values for event. You can predict values before start the event. You will get the actual data after event is finished.

There are two ways of budget allocation.

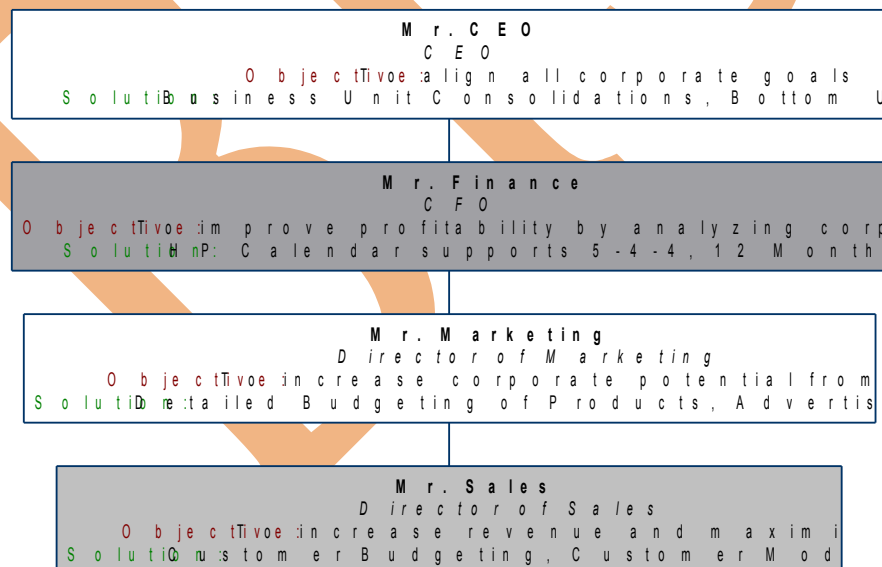
1. Top to Bottom :- If you allocate consolidated budget for perticular event. You did not specify indevisual budget for subevent. So you have to distrebut consoidate budget for different tasks.
2. Bottom to Top :- In this budget allocation approch you have to define for each and every event or task. You can consolidate budget and find total budget for whole event.

## Hyperion Planning

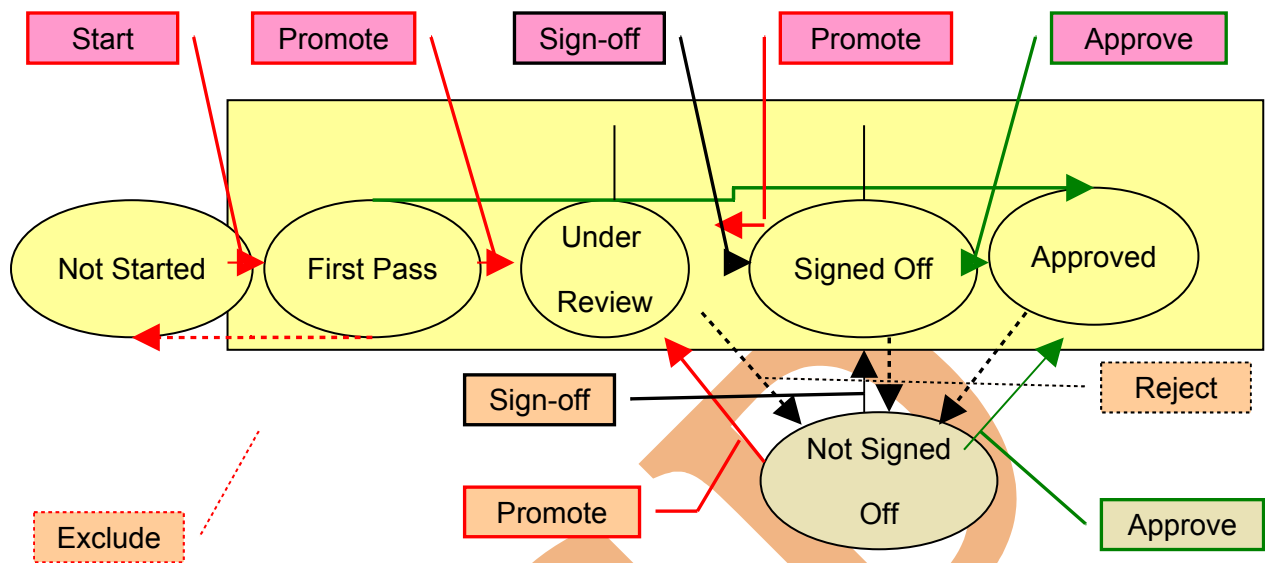
Oracle Hyperion Planning offers an efficient and optimized budget planning process to all levels within an organization. All decision makers and line-level managers can communicate together giving them the ability to make budget plans relevant and useful.

Hyperion Planning is a Web-based, multi-tiered budget and planning solution built on Hyperion Essbase OLAP Server.

Hyperion Planning is designed to meet with corporate objectives. Different users needs are different, in order to align them Hyperion Planning can have multiple versions. The below digram shows the clear picture.



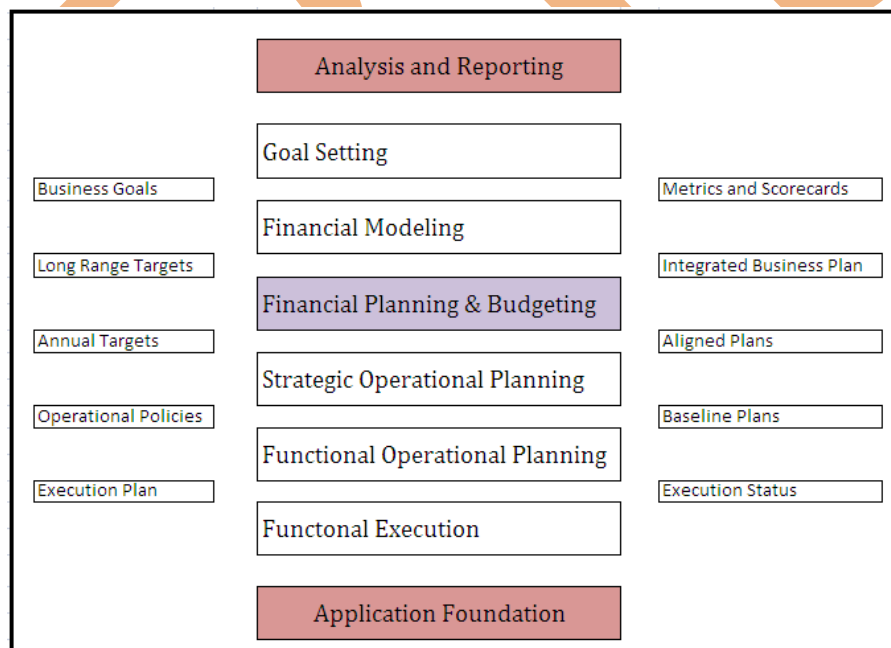




### Challenges that Planners Face include

- 1) High processing time due to lack of strategic guidance and missing link between financial and operational plans
- 2) Low plan accuracy due to inaccurate data
- 3) Limited level of detail for the budget
- 4) High number of Excel sheets that need maintenance
- 5) Need to expand to: rolling forecasts, operational planning, investment planning, bulk updates, pre-built depreciation calculations, version control

### Analysis and Reporting



Hyperion Planning is one, integrated Planning Platform that can address different planning requirements:

1. Revenue planning
2. Full Income Statement planning
3. Balance Sheet / Cash Flow planning
4. Rolling forecasting
5. Capital planning
6. And others

Hyperion Planning is built on the Hyperion Essbase engine. This allows for very powerful analysis and capabilities.

### **Planning Features**

1. You can use planning application in smart view.
2. Using planning application you can Enhances decision-making.
3. You can design datamodeling in planning using business rule and allocation.
4. You can integrate planning application with other system to load data.
5. You can integrate your planning application with reporting application.

### **Planning Components**

**Essbase :-** You can use Essbase as data sources for planning application. You can map Essbase database for reporting and analysis.

**Administration Services:-** Through administrative services planning application can perform following tasks designing, development, maintain and manage Essbase application and databases.

**Performance Management Architect:-** This components are used for managing dimensions of database.

**Workspace:-** This is a centralize place for performing any activity. You can access all oracle hyperion and non-oracle hyperion components from workspace. Workspace is web user interface for all hyperion components.

**Calculation Manager:-** This planning component is graphical user interface to create calculation script.

**Smart View:-** You can connect planning application with smart view and work offline. You can create reports on planning applications.

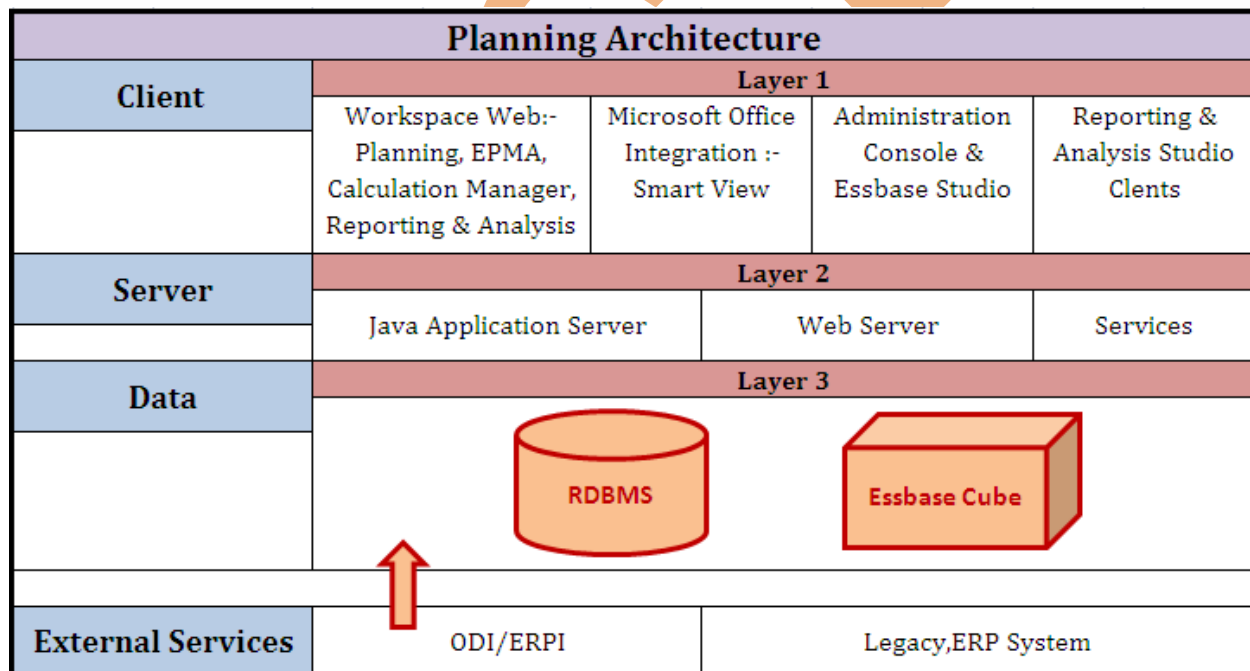
**Financial Reporting :-** You can connect financial reporting studio with planning application and create financial reports on planning application.

**Shared Services:-** You can use shared services to connect your planning application with other hyperion products with life cycle Management.

## Related Planning Components

1. Workforce Planning
2. Capital Asset Planning
3. Public Sector Planning and Budgeting
4. Profitability and cost Management
5. Performance Scorecard
6. Strategic Finance
7. Financial Management
8. Financial Data Quality Management

**Planning Architecture** Planning architecture is mainly divided into three tiers. Each tier is responsible for its own work. Planning architecture has client tier, server tier and data tier.



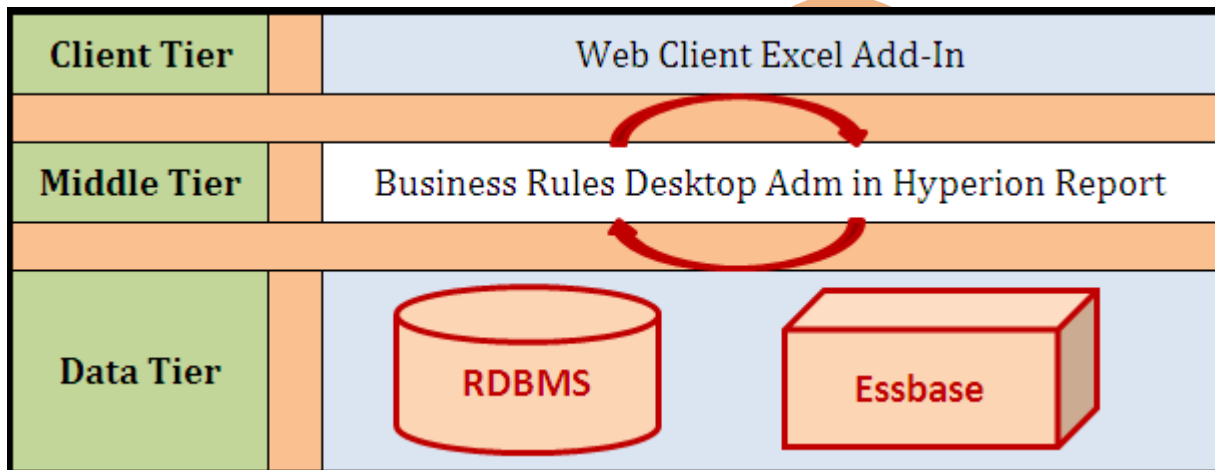
**Client Tier** Client tier is designed for user interface. You can interact with your planning application using hyperion components like Workspace, Smart View, web analysis studio, financial reporting studio and Essbase admin console. You can perform administrative tasks using workspace.

**Server Tier:** Server tier works in between client tier and data tier. Server tier contains java application and web server like shared servers, calculation manager, admin services, workspace, planning, web analysis, financial reporting.



**Data Tier:** Data tier is responsible for backend database. You can have RDBMs or Essbase database for planning application.

**External Services:** Planning architecture also supports External services for performing additional jobs. To load metadata and data you can use Oracle Data Integrator Adapter for Planning. You can use Financial data quality management ERP integration adaptor for FUSION Edition or classic application.

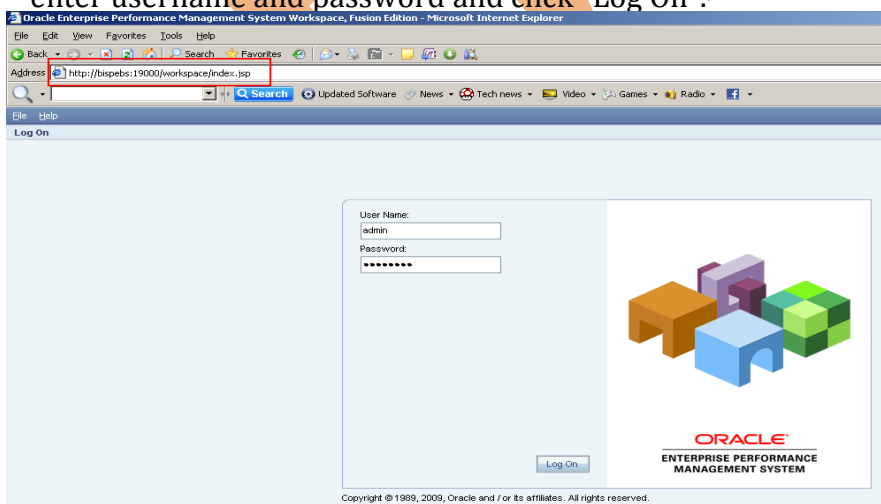


## Hyperion Workspace overview :

### Benefits of Workspace

1. Centralize console for all application.
2. You can create new applications, users.
3. You can manage all user administration and deploying application.
4. You will get a centralized repository of all hyperion products.

**Launching Workspace:** Workspace is centralized location to perform administrative tasks. You can invoke workspace by <http://<servername>:19000/workspace/index.jsp> enter username and password and click "Log On".

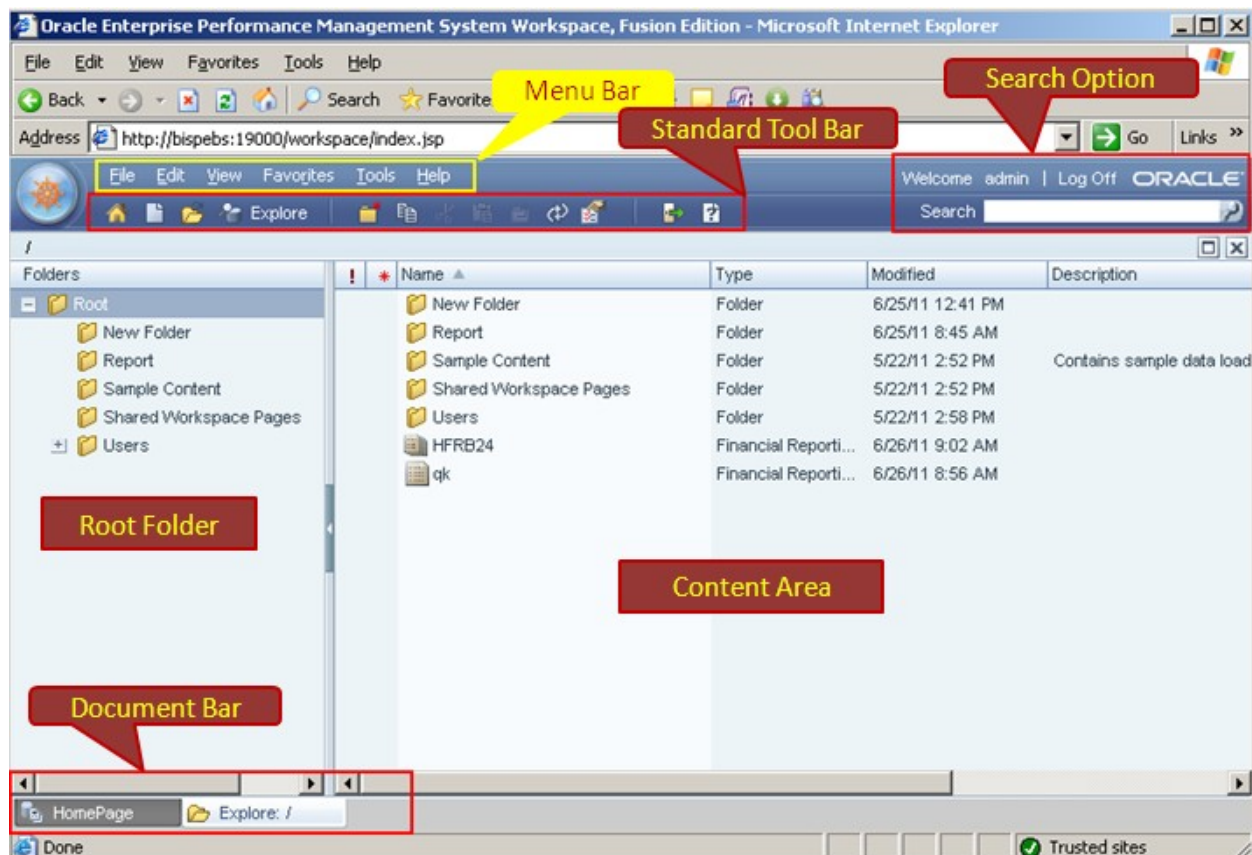


**Workspace User Interface:** This is workspace for user interface.

Menu bar - User can perform many jobs through menu bar, he can use help also.

Standard Toolbar – For performing sort operation.

Search Option – User can search any file which is stored in hyperion directory.

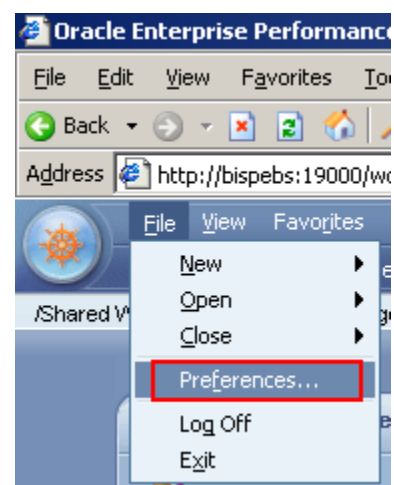


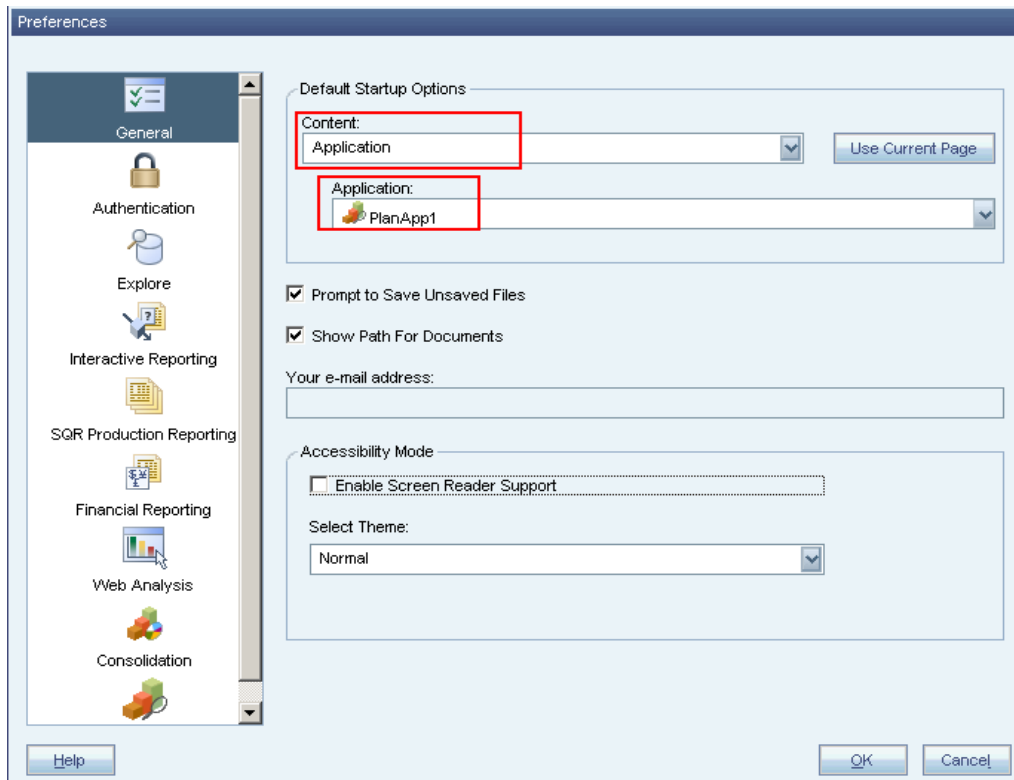
## Setting General Preferences

You can set preference through workspace.

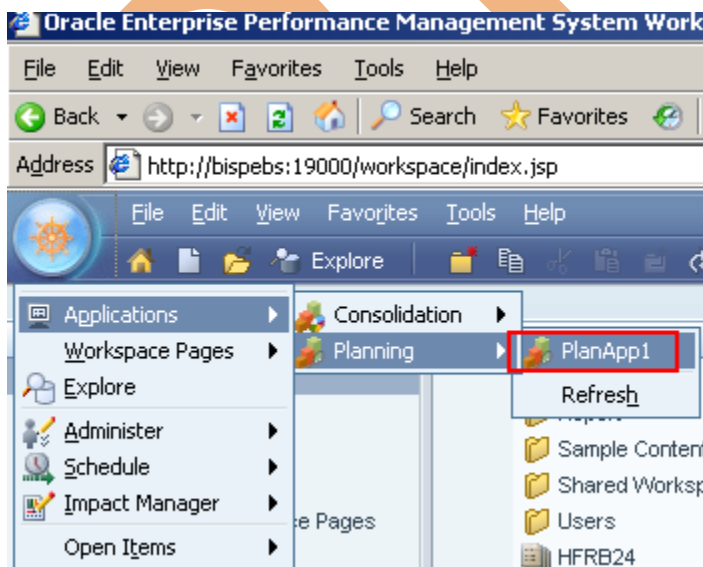
File → Preferences

These are general preference settings. You can set workspace preference as per your requirement. Once you set preference, every time you enter in to work space you will get same preference.

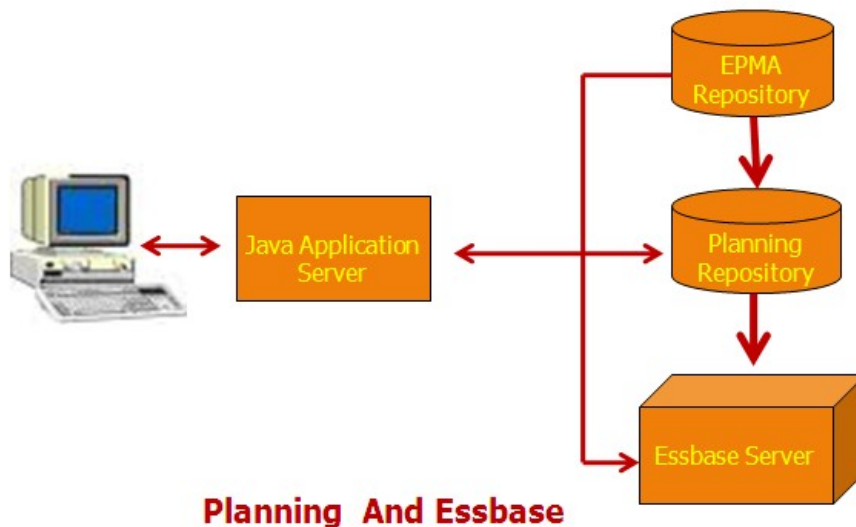




**Opening Planning Application :** Workspace is a common place for administration of all applications. You can open planning application through work space.



**Planning and Essbase integration:** This is planning Essbase architecture, what ever changes you do in your planning application, it will directly reflect to Essbase planning database.



**Planning Process Cycle :** Planning cycle is an iterative process. This is the functional flow of planning cycle. It starts from analysis of opportunities, you need to specify the goal of planning. There may be many ways to build a plan for the same goal. You need to select the best option out of them, then detail your plan and send for evaluation. If your plan needs to be reviewed, it goes back to plan again; else, if it is accepted, this plan will go for implementation.

